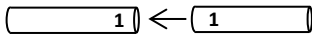


Laser Barrier Assembly Instructions

Our laser barriers come unassembled, so some assembly is required. We have used a number system to make assembly as simple as possible.

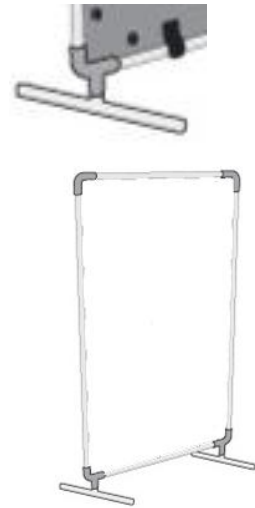
When you take the pieces of the frame from the box, you should notice that most frame parts have a number on each end. These numbers correspond to which parts fit together, and they also correspond to the order in which you should assemble the frame (start with both "1" ends, then join both "2" ends, etc).



All parts should fit snugly, and you should not have to force any part to fit into another. If you find that any parts are not going together easily, call your account rep or customer service for assistance.

The frame assembly starts with the feet. When you attach the feet, they should be perpendicular to the frame above.

The last two pairs of tubing will need to be inserted at the same time. You will end up with a frame which looks like this:



The last step is to attach the curtain to the frame via the Velcro straps which are pre-sewn into the curtain. Once you attach these, the barrier will look like this:

Please contact your Laser Safety Officer (LSO) for instructions on proper use of a laser barrier.

