



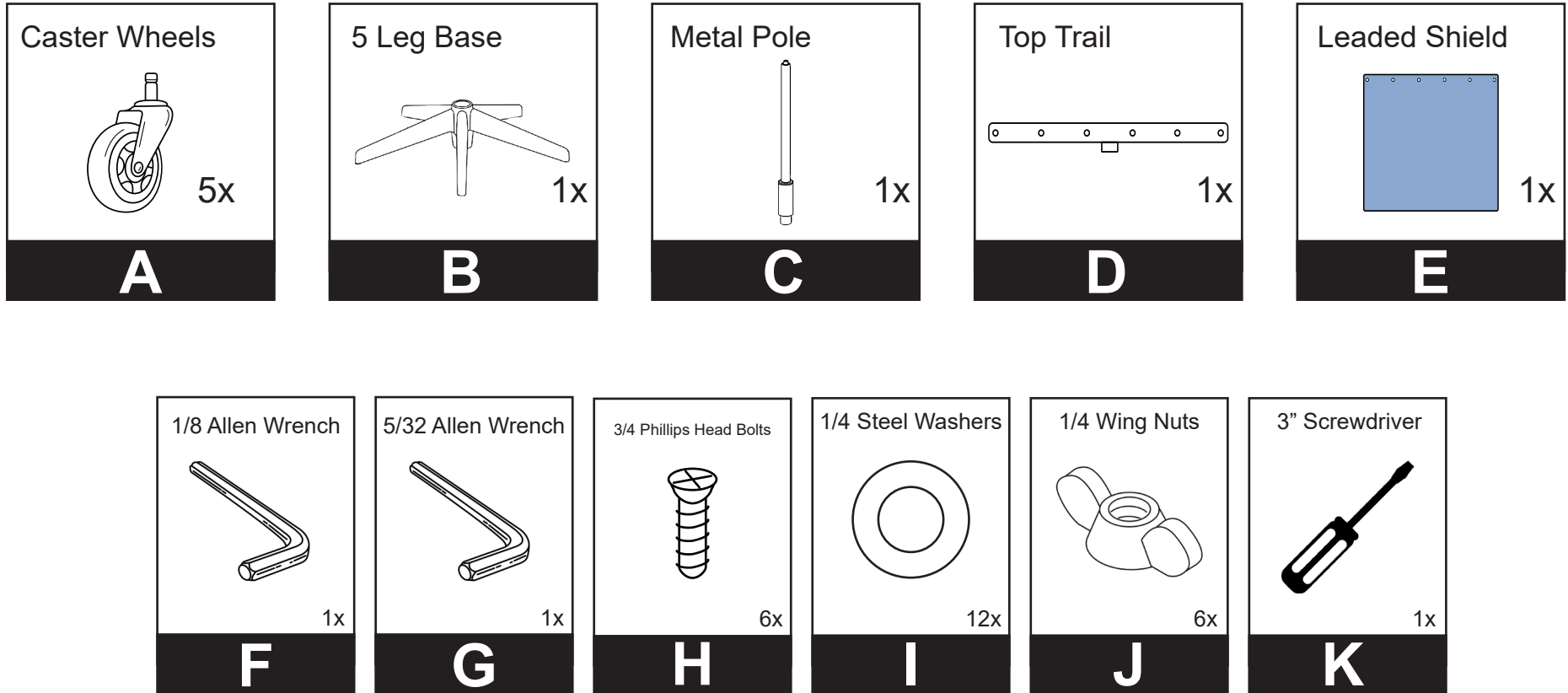
ASSEMBLY INSTRUCTIONS

MOBILE LEAD PORTA SHIELD - 5 LEG BASE
LB-MB-2424, LB-MB-2436, LB-MB-2448

ASSEMBLY INSTRUCTIONS

MOBILE LEAD PORTA SHIELD | LB-MB-2424, LB-MB-2436, LB-MB-2448

PARTS LIST



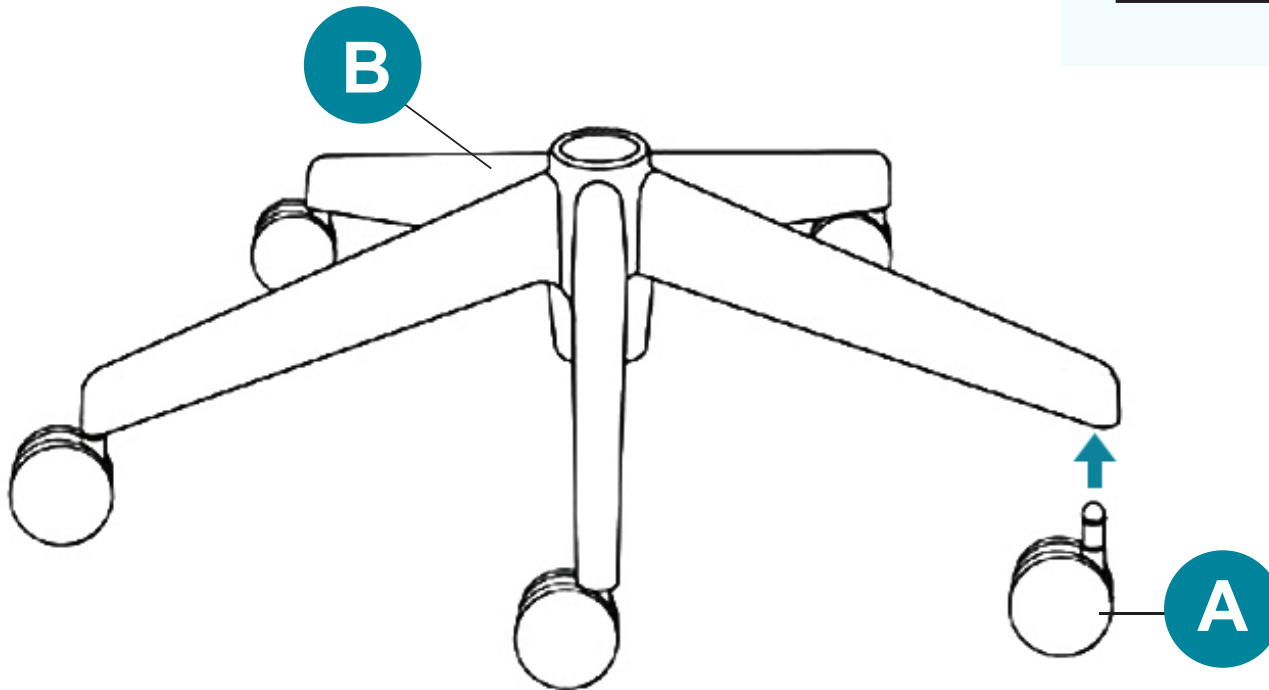
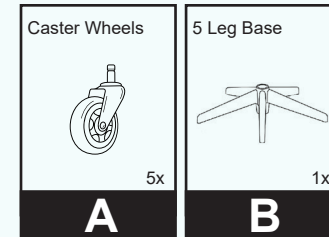
ASSEMBLY INSTRUCTIONS

MOBILE LEAD PORTA SHIELD | LB-MB-2424, LB-MB-2436, LB-MB-2448

STEP 1

1. Get the 5 Leg Base **B** and face upwards.
2. Attach the Caster Wheels **A** to the 5 Leg Base **B** holes with the pre-installed screws.
3. Repeat the process until you have the 3 Caster Wheels attached to the 5 Leg Base **B**.

PARTS NEEDED



T-BASE ASSEMBLY

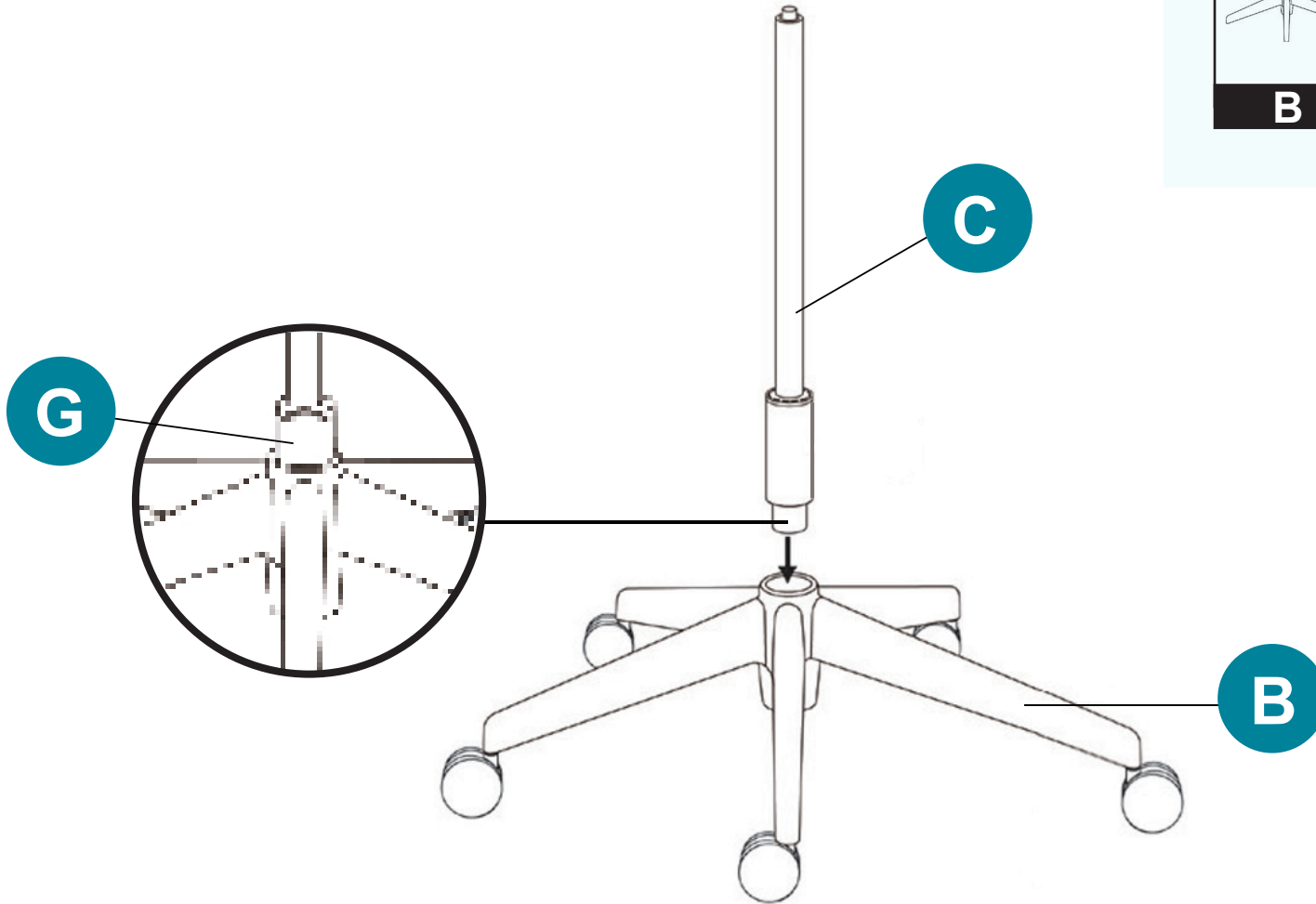
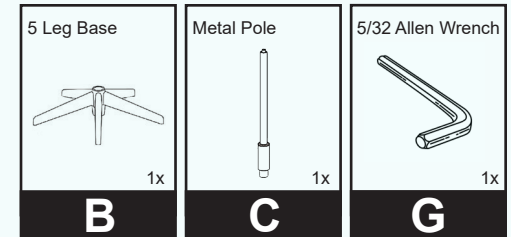
ASSEMBLY INSTRUCTIONS

MOBILE LEAD PORTA SHIELD | LB-MB-2424, LB-MB-2436, LB-MB-2448

STEP 2

4. Insert the Metal Pole **C** into the 5 Leg Base **B**.
5. Make sure the Metal Pole **C** is straight and align.
6. Secure using the 5/32 Allen Wrench **G**.

PARTS NEEDED



METAL POLE BASE

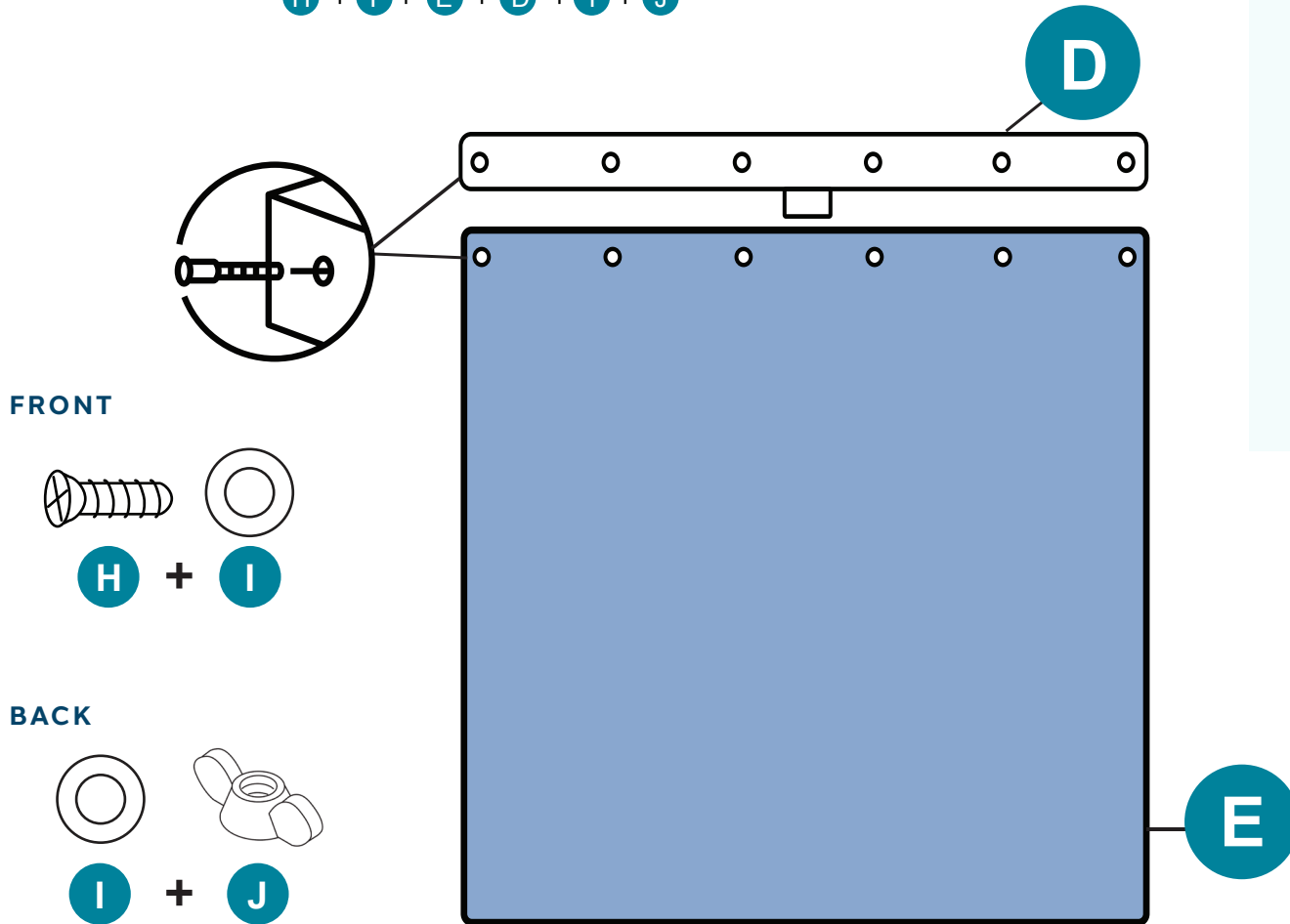
ASSEMBLY INSTRUCTIONS

MOBILE LEAD PORTA SHIELD | LB-MB-2424, LB-MB-2436, LB-MB-2448

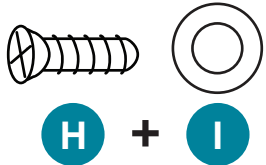
STEP 3

- Align the Lead Shield **E** with the Top Trail **D** holes.
- To secure the Lead Shield **E** in place use the hardware in the following order:

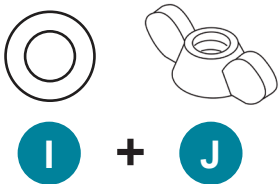
H + **I** + **E** + **D** + **I** + **J**



FRONT



BACK



PARTS NEEDED

 Top Trail 1x D	 Lead Shield 1x E	 3" Screwdriver 1x K
 3/4 Phillips Head Bolts 6x H	 1/4 Steel Washers 12x I	 1/4 Wing Nuts 6x J

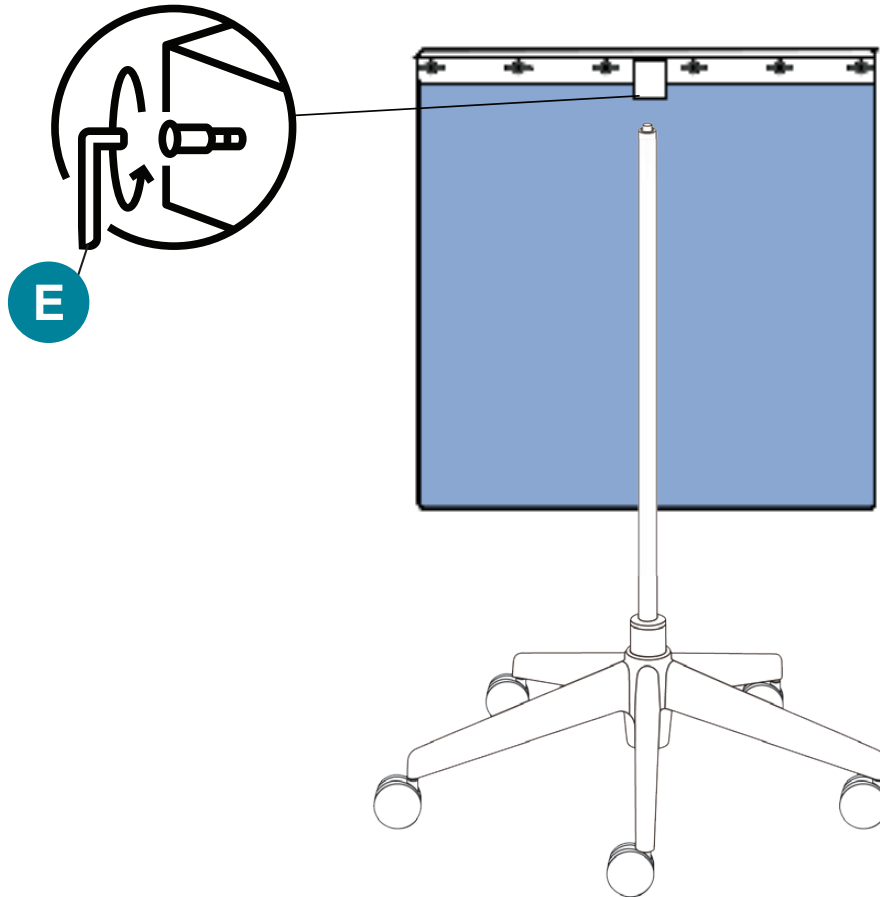
TOP TRAIL ASSEMBLY

ASSEMBLY INSTRUCTIONS

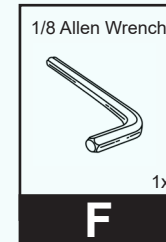
MOBILE LEAD PORTA SHIELD | LB-MB-2424, LB-MB-2436, LB-MB-2448

STEP 4

7. Attach the **assembled Top Trail** into the **assembled Metal Pole**.
8. Use the 1/8 Allen Wrench **F** to secure both pieces.
9. Adjust height as needed.



PARTS NEEDED



FINAL ASSEMBLY