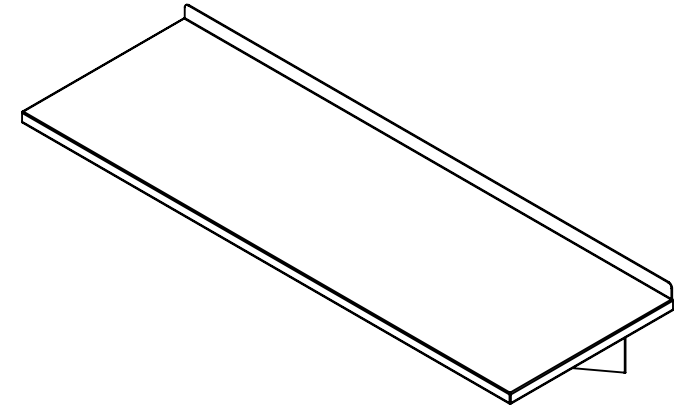
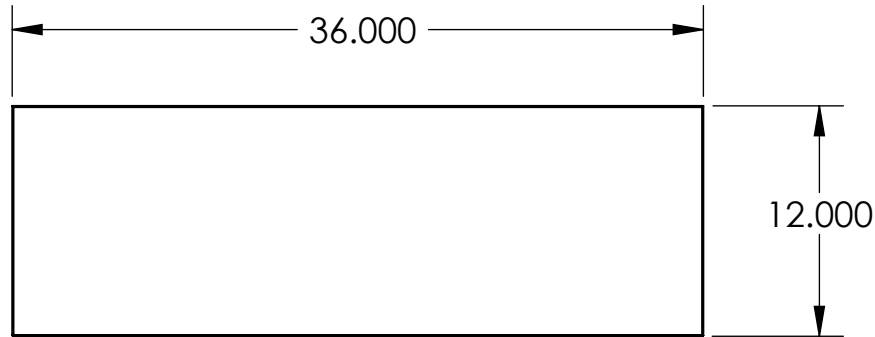
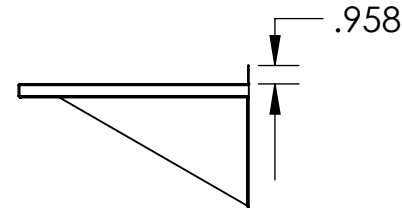


WALL SHELVES are supported by heavy-duty brackets and built for years of use. Shelves sport a clean design-no sharp edges as front and sides of shelf from a channel, the back is turned up slightly and polished smooth. Longer lengths available with field joins for mechanical fastening.



Ø.312
Mounting
Holes



PO#: _____ DATE: _____

APPROVAL: _____

TITLE: _____



PROPRIETARY AND CONFIDENTIAL
THE INFORMATION CONTAINED IN THIS DRAWING IS THE SOLE PROPERTY OF BLICKMAN HEALTH INDUSTRIES. ANY REPRODUCTION IN PART OR AS A WHOLE WITHOUT THE WRITTEN PERMISSION OF BLICKMAN HEALTH INDUSTRIES IS PROHIBITED.

UNLESS OTHERWISE SPECIFIED:
DIMENSIONS ARE IN INCHES
BEND RADIUS = MTL. THK.
TOLERANCES:
FRACTION: $\pm 1/32"$
DECIMAL: $\pm .031"$

	NAME	DATE
DRAWN	M.J	7/31/2007
ENG APPR.		
MATERIAL N/A		
FINISH N/A		
APPRX WEIGHT = 8.496 lbs		
DO NOT SCALE DRAWING		

BLICKMAN HEALTH INDUSTRIES, INC. LODI, N.J.		
TITLE: WALL SHELF ASSY WS3612		
SIZE A	DWG. NO. 1813612000	REV PD
SCALE: 1:10		SHEET 1 OF 1