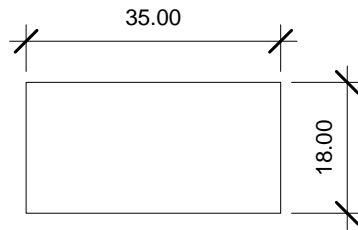
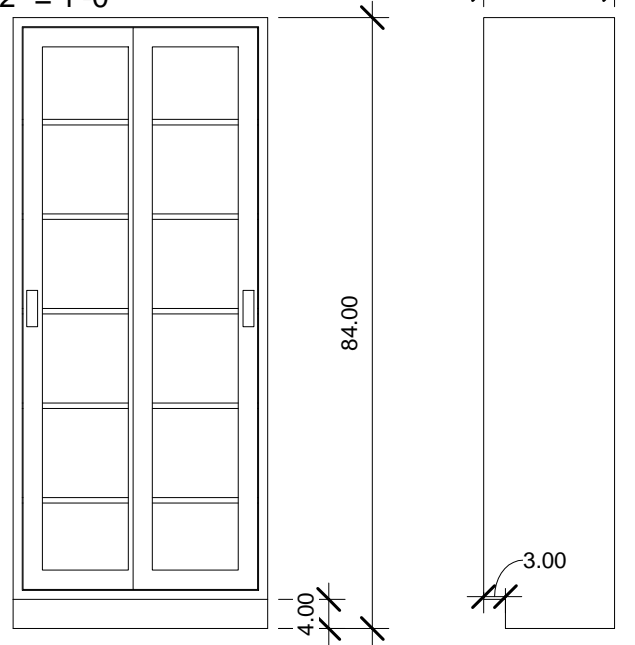


ALL 304 S/S CONSTRUCTION.
 ALL WELDS ARE GROUND AND
 POLISHED TO A # 4 FINISH. BASES
 EQUIPPED WITH LEVELERS. DOORS
 TRACK ON 1" DIA NYLON ROLLER
 BEARINGS. TWO POINT ROD LOCKING
 DOOR HANDLES. (5) S/S ADJUSTABLE
 SHELVES ON 1/2" INCREMENTS.

WALL ANCHORED
 OPA-2250-07
 CONTRACTOR INSTALLED

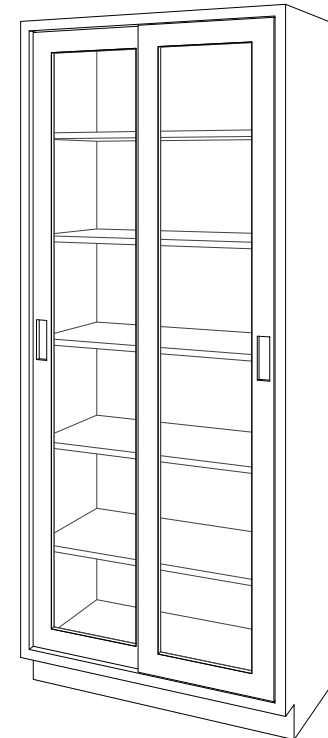


② Plan
 1/2" = 1'-0"



① Front
 1/2" = 1'-0"

③ Right
 1/2" = 1'-0"



④ 3D View 1

PO#: _____ DATE: _____

APPROVAL: _____

TITLE: _____



	NAME	DATE
DRAWN	JG	4-25-11
ENG APPR.		
MATERIAL		
304 S/S		
FINISH		
POL # 4		
APPRX WEIGHT = lbs 240 SHIPPING		
DO NOT SCALE DRAWING		

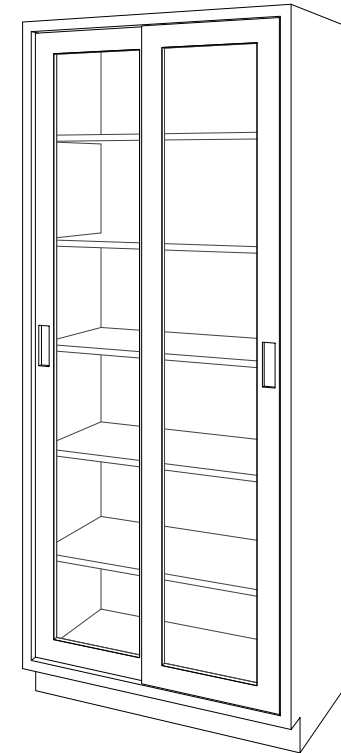
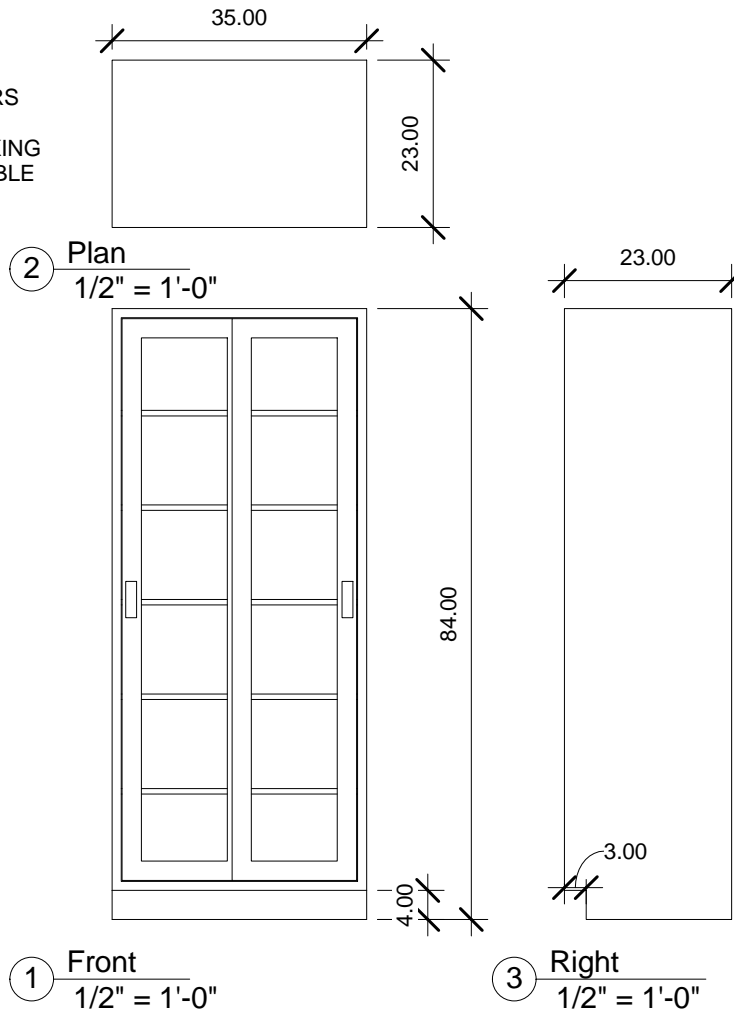
BLICKMAN HEALTH INDUSTRIES, INC. LODI, N.J.		
TITLE: M35HAS GLASS SLIDING DOORS HIGH CABINET		
SIZE	DWG. NO.	REV
A	2030635000	
SCALE: 1:16		SHEET 1 OF 1

PROPRIETARY AND CONFIDENTIAL
 THE INFORMATION CONTAINED IN THIS
 DRAWING IS THE SOLE PROPERTY OF
 BLICKMAN HEALTH INDUSTRIES. ANY
 REPRODUCTION IN PART OR AS A WHOLE
 WITHOUT THE WRITTEN PERMISSION OF
 BLICKMAN HEALTH INDUSTRIES IS PROHIBITED.

UNLESS OTHERWISE SPECIFIED:
 DIMENSIONS ARE IN INCHES
 BEND RADIUS = MTL THK.
 TOLERANCES:
 FRACTION: ± 1/32"
 DECIMAL: ± .031"

ALL 304 S/S CONSTRUCTION.
 ALL WELDS ARE GROUND AND
 POLISHED TO A # 4 FINISH. BASES
 EQUIPPED WITH LEVELERS. DOORS
 TRACK ON 1" DIA NYLON ROLLER
 BEARINGS. TWO POINT ROD LOCKING
 DOOR HANDLES. (5) S/S ADJUSTABLE
 SHELVES ON 1/2" INCREMENTS.

WALL ANCHORED
 OPA-2250-07
 CONTRACTOR INSTALLED

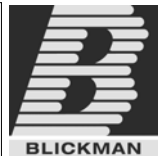


④ 3D View 1

PO#: _____ DATE: _____

APPROVAL: _____

TITLE: _____



	NAME	DATE
DRAWN	JG	4-25-11
ENG APPR.		
MATERIAL		
304 S/S		
FINISH		
POL # 4		
APPRX WEIGHT = lbs 240 SHIPPING		
DO NOT SCALE DRAWING		

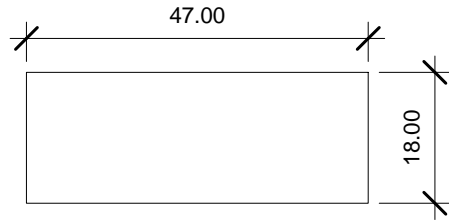
BLICKMAN HEALTH INDUSTRIES, INC. LODI, N.J.		
TITLE: M35HBS GLASS SLIDING DOORS HIGH CABINET		
SIZE	DWG. NO.	REV
A	2030635230	
SCALE: 1:16		SHEET 1 OF 1

PROPRIETARY AND CONFIDENTIAL
 THE INFORMATION CONTAINED IN THIS
 DRAWING IS THE SOLE PROPERTY OF
 BLICKMAN HEALTH INDUSTRIES. ANY
 REPRODUCTION IN PART OR AS A WHOLE
 WITHOUT THE WRITTEN PERMISSION OF
 BLICKMAN HEALTH INDUSTRIES IS PROHIBITED.

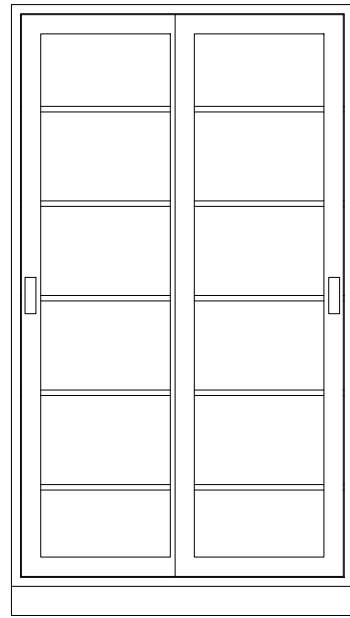
UNLESS OTHERWISE SPECIFIED:
 DIMENSIONS ARE IN INCHES
 BEND RADIUS = MTL THK.
 TOLERANCES:
 FRACTION: ± 1/32"
 DECIMAL: ± .031"

ALL 304 S/S CONSTRUCTION.
 ALL WELDS ARE GROUND AND
 POLISHED TO A # 4 FINISH. BASES
 EQUIPPED WITH LEVELERS. DOORS
 TRACK ON 1" DIA NYLON ROLLER
 BEARINGS. TWO POINT ROD LOCKING
 DOOR HANDLES. (5) S/S ADJUSTABLE
 SHELVES ON 1/2" INCREMENTS.

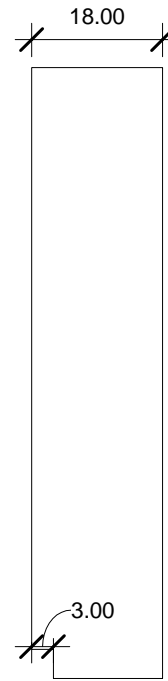
WALL ANCHORED
 OPA-2250-07
 CONTRACTOR INSTALLED



② Plan
 1/2" = 1'-0"



① Front
 1/2" = 1'-0"



③ Right
 1/2" = 1'-0"

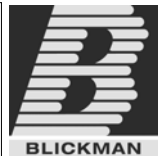


④ 3D View 1

PO#: _____ DATE: _____

APPROVAL: _____

TITLE: _____



PROPRIETARY AND CONFIDENTIAL
 THE INFORMATION CONTAINED IN THIS
 DRAWING IS THE SOLE PROPERTY OF
 BLICKMAN HEALTH INDUSTRIES. ANY
 REPRODUCTION IN PART OR AS A WHOLE
 WITHOUT THE WRITTEN PERMISSION OF
 BLICKMAN HEALTH INDUSTRIES IS PROHIBITED.

UNLESS OTHERWISE SPECIFIED:
 DIMENSIONS ARE IN INCHES
 BEND RADIUS = MTL THK.

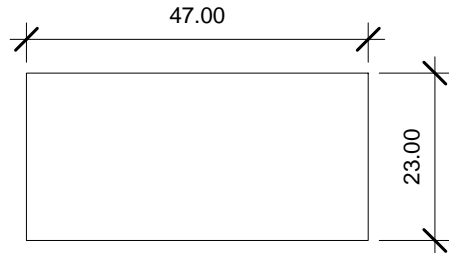
TOLERANCES:
 FRACTION: ± 1/32"
 DECIMAL: ± .031"

NAME	DATE
JG	4-25-11
DRAWN	
ENG APPR.	
MATERIAL	304 S/S
FINISH	POL # 4
APPRX WEIGHT = lbs	240 SHIPPING
DO NOT SCALE DRAWING	

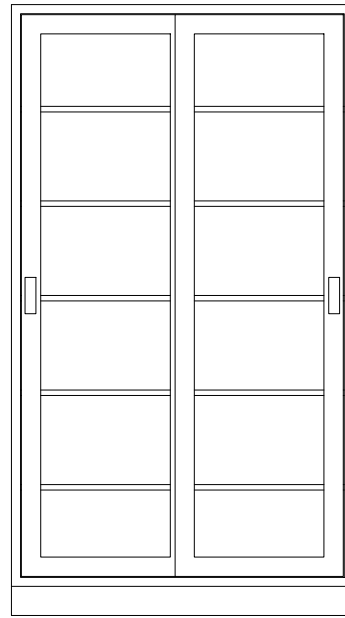
BLICKMAN HEALTH INDUSTRIES, INC. LODI, N.J.		
TITLE: M47HAS GLASS SLIDING DOORS HIGH CABINET		
SIZE A	DWG. NO. 2030647000	REV
SCALE: 1:16		SHEET 1 OF 1

ALL 304 S/S CONSTRUCTION.
 ALL WELDS ARE GROUND AND
 POLISHED TO A # 4 FINISH. BASES
 EQUIPPED WITH LEVELERS. DOORS
 TRACK ON 1" DIA NYLON ROLLER
 BEARINGS. TWO POINT ROD LOCKING
 DOOR HANDLES. (5) S/S ADJUSTABLE
 SHELVES ON 1/2" INCREMENTS.

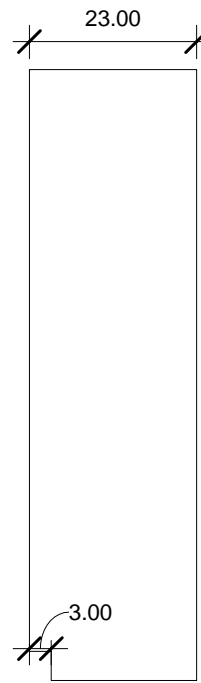
WALL ANCHORED
 OPA-2250-07
 CONTRACTOR INSTALLED



② Plan
 1/2" = 1'-0"



① Front
 1/2" = 1'-0"



③ Right
 1/2" = 1'-0"

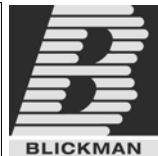


④ 3D View 1

PO#: _____ DATE: _____

APPROVAL: _____

TITLE: _____



PROPRIETARY AND CONFIDENTIAL
 THE INFORMATION CONTAINED IN THIS
 DRAWING IS THE SOLE PROPERTY OF
 BLICKMAN HEALTH INDUSTRIES. ANY
 REPRODUCTION IN PART OR AS A WHOLE
 WITHOUT THE WRITTEN PERMISSION OF
 BLICKMAN HEALTH INDUSTRIES IS PROHIBITED.

UNLESS OTHERWISE SPECIFIED:
 DIMENSIONS ARE IN INCHES
 BEND RADIUS = MTL. THK.
 TOLERANCES:
 FRACTION: ± 1/32"
 DECIMAL: ± .031"

	NAME	DATE
DRAWN	JG	4-25-11
ENG APPR.		
MATERIAL		
304 S/S		
FINISH		
POL # 4		
APPRX WEIGHT = lbs 240 SHIPPING		
DO NOT SCALE DRAWING		

BLICKMAN HEALTH INDUSTRIES, INC. LODI, N.J.		
TITLE: M47HBS GLASS SLIDING DOORS HIGH CABINET		
SIZE A	DWG. NO. 2030647230	REV
SCALE: 1:16	SHEET 1 OF 1	

5 † 4 3 2 1