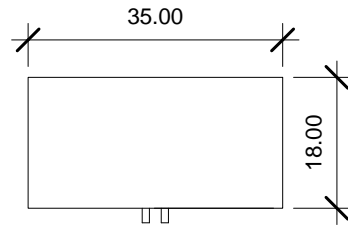
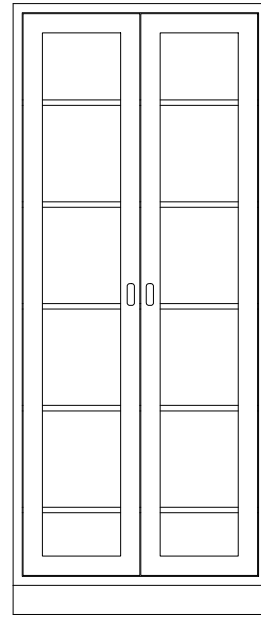


ALL 304 S/S CONSTRUCTION.  
 ALL WELDS ARE GROUND AND  
 POLISHED TO A # 4 FINISH. BASES  
 EQUIPPED WITH LEVELERS. (3) S/S  
 FIVE KNUCKLE HOSPITAL GRADE  
 HINGES. TWO POINT ROD LOCKING  
 DOOR HANDLES. (5) S/S ADJUSTABLE  
 SHELVES ON 1/2" INCREMENTS.

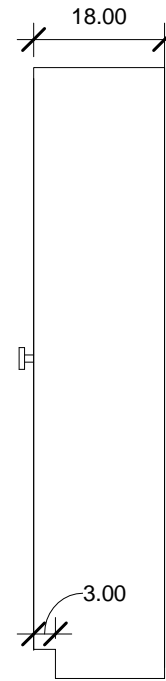
**WALL ANCHORED  
 OPA-2250-07  
 CONTRACTOR INSTALLED**



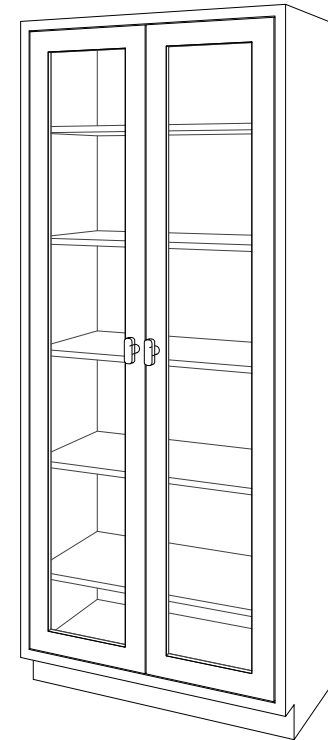
② **Plan**  
 1/2" = 1'-0"



① **Front**  
 1/2" = 1'-0"

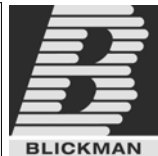


③ **Right**  
 1/2" = 1'-0"



④ **3D View 1**

PO#: \_\_\_\_\_ DATE: \_\_\_\_\_  
 APPROVAL: \_\_\_\_\_  
 TITLE: \_\_\_\_\_



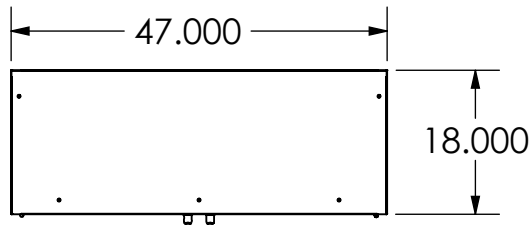
|                                 |      |         |
|---------------------------------|------|---------|
|                                 | NAME | DATE    |
| DRAWN                           | JG   | 4-25-11 |
| ENG APPR.                       |      |         |
| MATERIAL                        |      |         |
| 304 S/S                         |      |         |
| FINISH                          |      |         |
| POL # 4                         |      |         |
| APPRX WEIGHT = lbs 260 SHIPPING |      |         |
| DO NOT SCALE DRAWING            |      |         |

|   |                   |              |
|---|-------------------|--------------|
| BLICKMAN HEALTH INDUSTRIES, INC.<br>LODI, N.J.                              |                   |              |
| TITLE:<br><b>L35HAS</b><br><b>GLASS HINGED DOORS</b><br><b>HIGH CABINET</b> |                   |              |
| SIZE  | DWG. NO.          | REV          |
| <b>A</b>  | <b>2030535000</b> |              |
| SCALE: 1:16   |                   | SHEET 1 OF 1 |

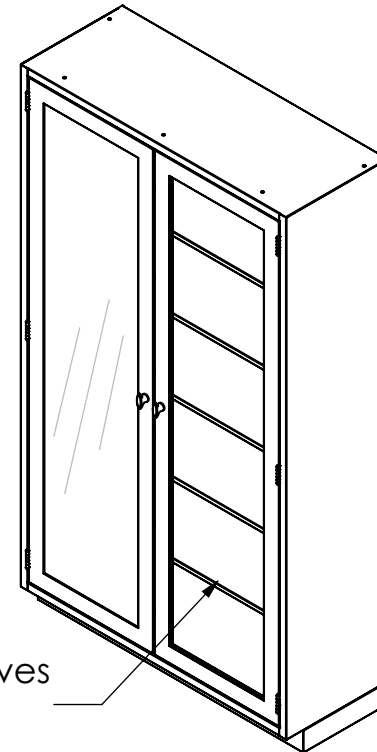
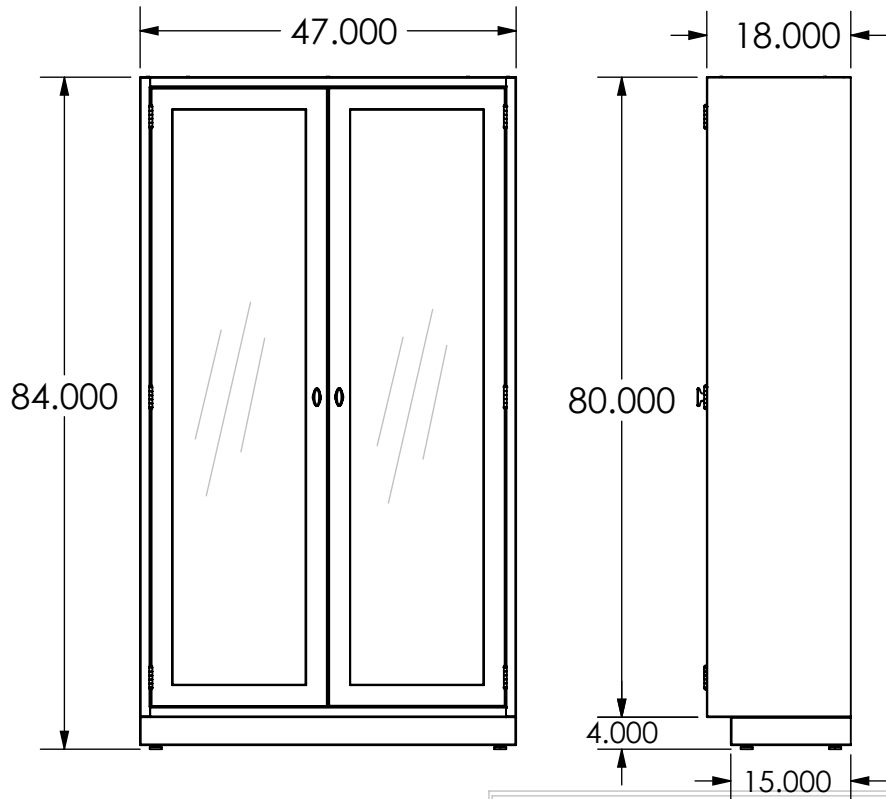
PROPRIETARY AND CONFIDENTIAL  
 THE INFORMATION CONTAINED IN THIS  
 DRAWING IS THE SOLE PROPERTY OF  
 BLICKMAN HEALTH INDUSTRIES. ANY  
 REPRODUCTION IN PART OR AS A WHOLE  
 WITHOUT THE WRITTEN PERMISSION OF  
 BLICKMAN HEALTH INDUSTRIES IS PROHIBITED.

UNLESS OTHERWISE SPECIFIED:  
 DIMENSIONS ARE IN INCHES  
 BEND RADIUS = MTL THK.  
 TOLERANCES:  
 FRACTION: ± 1/32"  
 DECIMAL: ± .031"





**MATERIALS-** Stainless Steel Type 300 Series, non-magnetic. 1/4" thick clear tempered glass.  
**GAUGES-** Body shelves, outer door, inner door and frame - 18 gauge. base - 16 gauge. Leveling gussets - 12 gauge.  
**CONSTRUCTION-** Cabinets are constructed as floor and wall supported, individual cases with finished sides, designed to accommodate five adjustable shelves.



(5) SS Shelves  
ADJ. 1/2"

BLICKMAN, INC.  
CLIFTON, N.J.

PO#: \_\_\_\_\_ DATE: \_\_\_\_\_

APPROVAL: \_\_\_\_\_

TITLE: \_\_\_\_\_



|                      | NAME          | DATE       |
|----------------------|---------------|------------|
| DRAWN                | M.J           | 01/21/2010 |
| ENG APPR.            |               |            |
| MATERIAL             | N/A           |            |
| FINISH               | N/A           |            |
| APPRX WEIGHT         | = 274.848 lbs |            |
| DO NOT SCALE DRAWING |               |            |

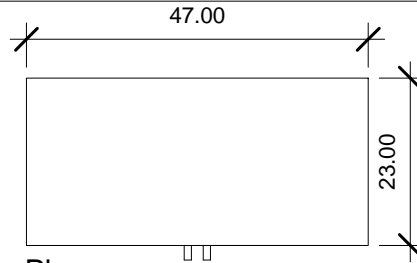
|                          |              |     |
|--------------------------|--------------|-----|
| TITLE:                   |              |     |
| L47HAS<br>HC 47Wx84Hx18D |              |     |
| SIZE                     | DWG. NO.     | REV |
| <b>A</b>                 | 2030547000   | PI  |
| SCALE: 1:30              | SHEET 1 OF 1 |     |

**PROPRIETARY AND CONFIDENTIAL**  
 THE INFORMATION CONTAINED IN THIS DRAWING IS THE SOLE PROPERTY OF BLICKMAN HEALTH INDUSTRIES. ANY REPRODUCTION IN PART OR AS A WHOLE WITHOUT THE WRITTEN PERMISSION OF BLICKMAN HEALTH INDUSTRIES IS PROHIBITED.

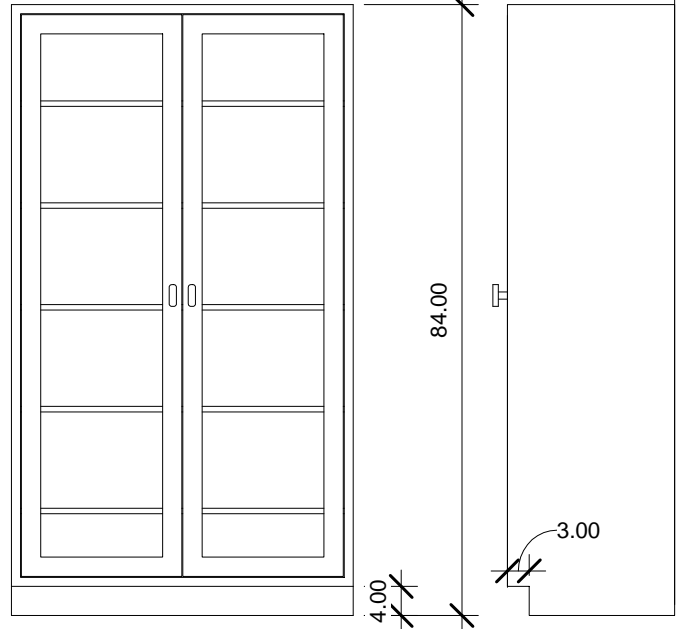
UNLESS OTHERWISE SPECIFIED:  
 DIMENSIONS ARE IN INCHES  
 BEND RADIUS = MTL. THK.  
 TOLERANCES:  
 FRACTION: ±1/32"  
 DECIMAL: ±.031"

ALL 304 S/S CONSTRUCTION.  
 ALL WELDS ARE GROUND AND  
 POLISHED TO A # 4 FINISH. BASES  
 EQUIPPED WITH LEVELERS. (3) S/S  
 FIVE KNUCKLE HOSPITAL GRADE  
 HINGES. TWO POINT ROD LOCKING  
 DOOR HANDLES. (5) S/S ADJUSTABLE  
 SHELVES ON 1/2" INCREMENTS.

**WALL ANCHORED  
 OPA-2250-07  
 CONTRACTOR INSTALLED**



② **Plan**  
 1/2" = 1'-0"



① **Front**  
 1/2" = 1'-0"

③ **Right**  
 1/2" = 1'-0"

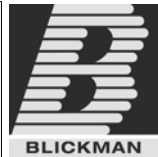


④ **3D View 1**

PO#: \_\_\_\_\_ DATE: \_\_\_\_\_

APPROVAL: \_\_\_\_\_

TITLE: \_\_\_\_\_



|                                 |      |         |
|---------------------------------|------|---------|
|                                 | NAME | DATE    |
| DRAWN                           | JG   | 4-25-11 |
| ENG APPR.                       |      |         |
| MATERIAL                        |      |         |
| 304 S/S                         |      |         |
| FINISH                          |      |         |
| POL # 4                         |      |         |
| APPRX WEIGHT = lbs 260 SHIPPING |      |         |
| DO NOT SCALE DRAWING            |      |         |

|  |                   |              |
|--|-------------------|--------------|
| BLICKMAN HEALTH INDUSTRIES, INC.<br>LODI, N.J. |                   |              |
| TITLE:<br><b>L47HBS</b>                        |                   |              |
| <b>GLASS HINGED DOORS<br/>HIGH CABINET</b>     |                   |              |
| SIZE   | DWG. NO.          | REV          |
| <b>A</b>                                       | <b>2030547230</b> |              |
| SCALE: 1:16                                    |                   | SHEET 1 OF 1 |

PROPRIETARY AND CONFIDENTIAL  
 THE INFORMATION CONTAINED IN THIS  
 DRAWING IS THE SOLE PROPERTY OF  
 BLICKMAN HEALTH INDUSTRIES. ANY  
 REPRODUCTION IN PART OR AS A WHOLE  
 WITHOUT THE WRITTEN PERMISSION OF  
 BLICKMAN HEALTH INDUSTRIES IS PROHIBITED.

UNLESS OTHERWISE SPECIFIED:  
 DIMENSIONS ARE IN INCHES  
 BEND RADIUS = MTL THK.  
 TOLERANCES:  
 FRACTION: ± 1/32"  
 DECIMAL: ± .031"