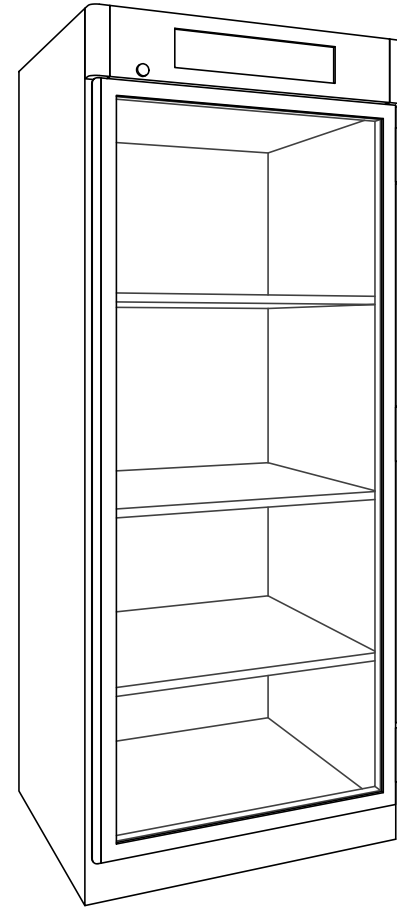
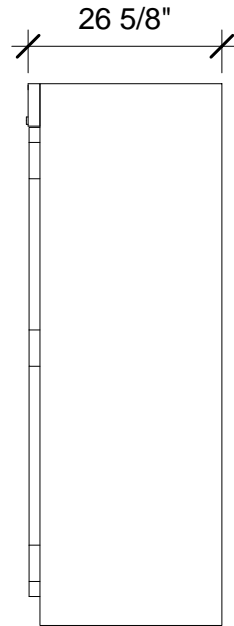
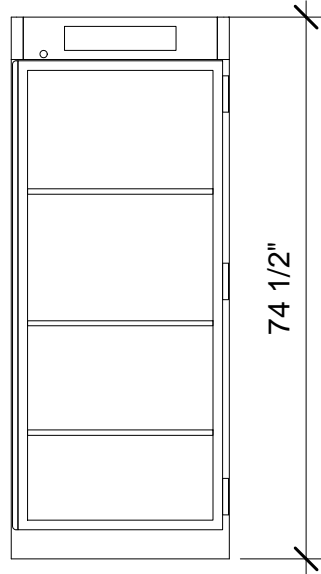


30"W x 26-5/8"D x 74-1/2"H
 CUBIC CAPACITY 22.02 CU/FT
 SHELVES (3)
 120V, 750W, 7.5A
 WIFI READY
 ENERGY SAVING MODE



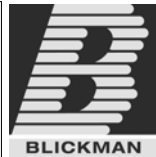
NEMA 5-15P
 15A - 125V PLUG
 HOSPITAL GRADE



PO#: _____ DATE: _____

APPROVAL: _____

TITLE: _____



	NAME	DATE
DRAWN	JG	4-16-12
ENG APPR.		
MATERIAL		

PROPRIETARY AND CONFIDENTIAL
 THE INFORMATION CONTAINED IN THIS
 DRAWING IS THE SOLE PROPERTY OF
 BLICKMAN HEALTH INDUSTRIES. ANY
 REPRODUCTION IN PART OR AS A WHOLE
 WITHOUT THE WRITTEN PERMISSION OF
 BLICKMAN HEALTH INDUSTRIES IS PROHIBITED.

UNLESS OTHERWISE SPECIFIED:
 DIMENSIONS ARE IN INCHES
 BEND RADIUS = MTL THK.
 TOLERANCES:
 FRACTION: ± 1/32"
 DECIMAL: ± .031"

FINISH

APPRX WEIGHT = lbs

DO NOT SCALE DRAWING

BLICKMAN HEALTH INDUSTRIES, INC. LODI, N.J.		
TITLE: 7921TG BLANKET WARMER		
SIZE A	DWG. NO. 14B7921243	REV
SCALE: 1:16	SHEET 1 OF 1	

5

4

3

2

1

