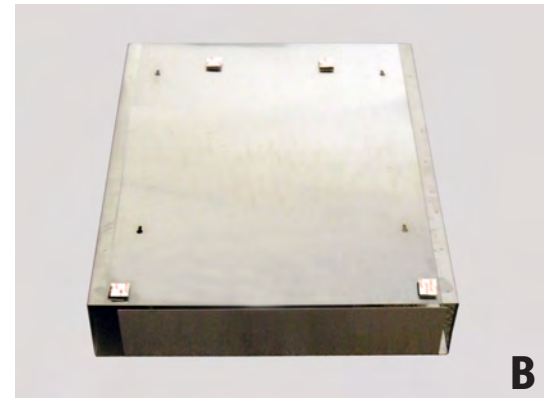


# Instruction Sheet

## #307001 Door Hanger Brackets

- A) Position door hangers so they are hooked properly on top of door. Insure the mounting studs are 16" apart.
- B) Remove the backing from the 1" Dual Lock Squares provided and place on back of the item being mounted. One square should be placed in the lower right and left hand corners. The remaining two squares should be placed on the upper portion in between the hanger brackets.
- C) Clean door surface with rubbing alcohol to remove any oils. Remove the remaining backing from the Dual Lock. Place product on hanger bracket making sure the bracket studs are secure in the keyholes of the item. Push item firmly to the door to insure the Dual Lock sticks properly.



MANUFACTURERS OF **BEAM** PRODUCTS  
**OMNIMED** INC.®