

Ultrasound Needle Breast Biopsy Phantom with Amorphous Lesions

Model 052A



ZERDINE® Inside
A registered trademark of CIRS

THE PERFECT TRAINING DEVICE FOR ULTRASOUND GUIDED NEEDLE BIOPSY PROCEDURES

The Model 052A, Ultrasound Needle Breast Biopsy Phantom with Amorphous Lesions, was designed specifically for ultrasound-guided needle biopsy training and experimentation. The non-spherical shape of the embedded targets enable practice with 2D, 3D and 4D image acquisition.

The Model 052A accurately mimics the ultrasonic characteristics of tissues found in the average human breast. The size and shape of the phantom simulates that of an average patient in the supine position. Within each phantom, there are six cystic masses and six dense masses which are randomly positioned.

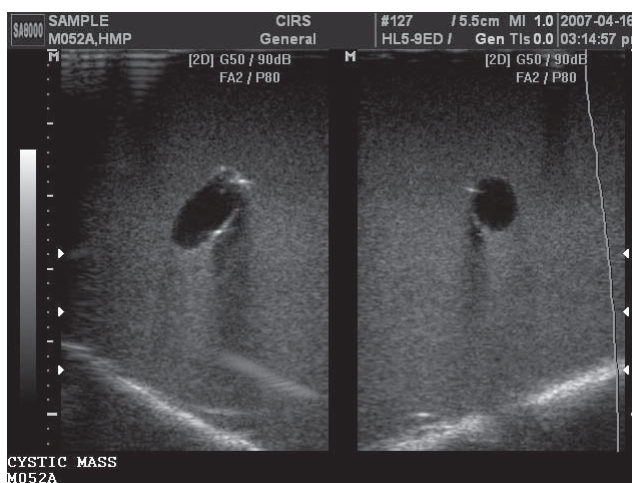
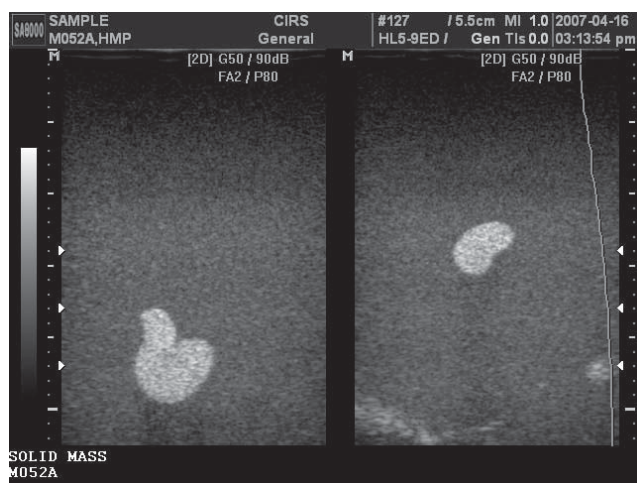
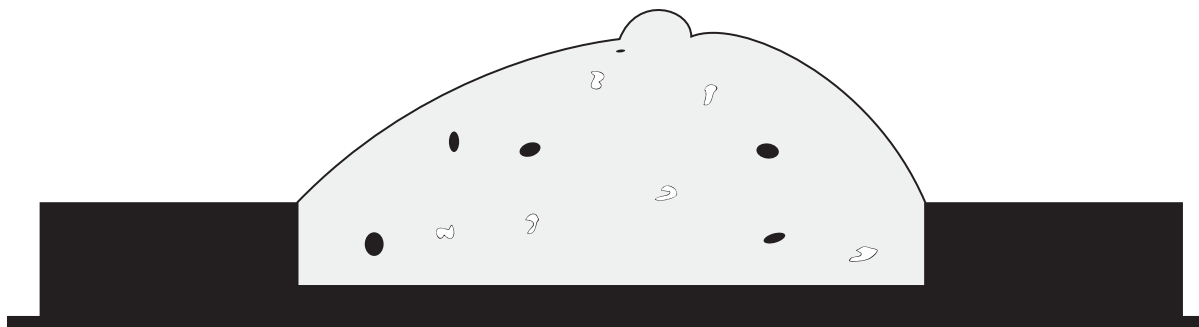
Because it is constructed of a self-healing formulation of Zerdine®, the phantom will allow multiple biopsy insertions with minimal needling tracking. Needle tracks will usually disappear within minutes (sometime seconds) of needle removal. Each cystic mass may be aspirated once and each dense mass may be biopsied multiple times.

A special holding tray facilitates proper hand position during the training procedures.

Benefits

- Improve hand-eye coordination
- Build confidence and reduce patient anxiety
- Test new equipment
- Experiment with new techniques
- Instruct others
- Contains cysts which can be aspirated
- Contains solids which can be biopsied

©US PATENT# 5196343



SPECIFICATIONS

PHANTOM DIMENSIONS

Dimensions: 15 cm x 12 cm x 7 cm
Breast size: 600 cc

BACKGROUND

Material: Zerdine
Color: White
Characteristics: Mimics average human breast tissue

CYSTIC MASSES

Color: Green
Size Range: 8 mm -15 mm
Quantity: 6
Positioning: Random

DENSE MASSES

Color: Black
Size Range: 6 mm-12 mm
Quantity: 6
Positioning: Random

MODEL 052 INCLUDES

Ultrasound Needle Breast Biopsy Phantom
with Amorphous Lesions
User Guide
6-Month Warranty