



...going one step further



B36
B37

Latin

- 1 A. carotis externa dextra
- 2 V. jugularis interna dextra
- 3 A. thyroidea superior dextra
- 4 Cartilago thyroidea
- 5 A. carotis communis dextra
- 6 Cartilago cricoidea
- 7 Glandula thyroidea
- 8 V. thyroidea inferior
- 9 M. scalenus anterior
- 10 Trachea
- 11 V. subclavia dextra
- 12 V. brachiocephalica dextra
- 13 V. cava superior
- 14 Pulmo dexter
- 15 M. pectoralis major
- 16 M. pectoralis minor
- 17 M. serratus anterior
- 18 Bronchus lobaris inferior dexter
- 19 Mm. intercostales externi
- 20 Costa VII
- 21 Diaphragma
- 22 M. obliquus externus abdominis
- 23 Oesophagus, pars abdominalis
- 24 Diaphragma, pars costalis
- 25 Diaphragma, pars lumbalis
- 26 Glandula suprarenalis dextra
- 27 Truncus coeliacus
- 28 V. cava inferior
- 29 Ren, pelvis
- 30 V. renalis
- 31 Ureter
- 32 A. testicularis/ovarica dextra
- 33 Crista iliaca
- 34 V. iliaca communis dextra
- 35 A. iliaca communis dextra
- 36 Promontorium
- 37 M. iliacus
- 38 M. transversus abdominis
- 39 M. obliquus internus abdominis
- 40 Vesica urinaria
- 41 M. rectus abdominis
- 42 A. carotis interna sinistra
- 43 Os hyoideum
- 44 Corpus adiposum preepiglotticum
- 45 M. sternocleidomastoideus
- 46 A. carotis communis sinistra
- 47 M. cricothyroideus
- 48 V. jugularis interna sinistra
- 49 A. thyroidea superior sinistra
- 50 M. omohyoideus, venter inferior
- 51 A. subclavia sinistra
- 52 Clavicula
- 53 V. brachiocephalica sinistra
- 54 Aorta, pars ascendens
- 55 A. pulmonalis sinistra
- 56 V. pulmonalis sinistra superior
- 57 Trachea, bifurcatio
- 58 Bronchus principalis sinister
- 59 Oesophagus
- 60 Aorta, pars thoracica
- 61 Bronchus lobaris inferior sinister
- 62 Pulmo sinister
- 63 Foramen venae cavae
- 64 Pleura parietalis
- 65 Splen
- 66 Glandula suprarenalis sinistra
- 67 Splen, hilum
- 68 V. suprarenalis sinistra
- 69 Aorta, pars abdominalis
- 70 Ren sinister
- 71 Ureter sinister
- 72 V. testicularis/ovarica sinistra
- 73 M. quadratus lumborum
- 74 A. testicularis/ovarica sinistra
- 75 A. iliaca communis sinistra
- 76 V. iliaca communis sinistra
- 77 A. sacralis mediana
- 78 M. psoas major
- 79 Colon sigmoideum
- 80 Rectum
- 81 Lig. inguinale
- 82 Nodus lymphaticus
- 83 Linea alba
- 84 A. femoralis
- 85 V. femoralis
- 86 Vas lymphaticum
- 87 Encephalon
- 88 Dura mater cranialis
- 89 Os frontale
- 90 M. temporalis
- 91 Oculus
- 92 Os zygomaticum
- 93 Maxilla
- 94 Os nasale
- 95 M. masseter
- 96 Dentes
- 97 Mandibula
- 98 Regio frontalis
- 99 Regio orbitalis
- 100 Regio temporalis
- 101 Regio nasalis
- 102 Regio infraorbitalis
- 103 Regio zygomatica
- 104 Regio oralis
- 105 Regio buccalis
- 106 Regio mentalis
- 107 Os sacrum
- 108 Os coccygis
- 109 Os pubis
- 110 M. levator ani
- 111 M. coccygeus
- 112 M. piriformis
- 113 Vertebra lumbalis V
- 114 Helix

115	Fossa triangularis	172	V. cardiaca magna
116	Antihelix	173	A. coronaria sinistra
117	Meatus acusticus externus	174	Ventriculus sinister
118	Tragus	175	Apex cordis
119	Antitragus	176	Ventriculus dexter
120	Concha auriculae	177	A. coronaria dextra
121	Lobulus auriculae	178	Atrium dextrum
122	Cutis	179	Auricula dextra
123	Os parietale	180	A. pulmonalis dextra
124	Sutura coronalis	181	Vv. pulmonales dextrae
125	Os sphenoidale	182	R. interventricularis posterior
126	Processus coronoideus	183	V. cardiaca media
127	Processus condylaris	184	R. circumflexus a. coronariae sinistrae
128	Foramen mentale	185	Sinus coronarius
129	Processus mastoideus	186	Vv. pulmonales sinistrae
130	Porus acusticus externus	187	A. pulmonalis sinistra
131	Os occipitale	188	Atrium sinistrum
132	Os temporale	189	Chordae tendineae
133	Sutura squamosa	190	M. papillaris
134	M. rectus superior	191	Septum interventriculare
135	M. obliquus superior, Tendo	192	Valva atrioventricularis dextra [Valva tricuspidalis]
136	M. rectus medialis	193	Valva atrioventricularis sinistra [Valva mitralis]
137	Pupilla	194	Valva aortae
138	Iris	195	Valva trunci pulmonalis
139	Bulbus oculi	196	Hepar
140	M. obliquus inferior	197	Lobus hepatis dexter
141	M. rectus lateralis	198	Lobus hepatis sinister
142	N. opticus	199	Vesica biliaris
143	M. rectus inferior	200	Lobus quadratus
144	Sternum	201	A. hepatica propria
145	Glandula mammaria	202	Lig. teres hepatis
146	Papilla mammaria	203	V. portae hepatis
147	Areola mammae	204	Lobus caudatus
148	Glandulae areolares	205	Gaster
149	Cartilago costalis	206	Fundus gastricus
150	Costa XI	207	Corpus gastricum
151	Costa X	208	Curvatura major
152	Costa IX	209	Omentum majus
153	Costa VIII	210	Antrum pyloricum
154	Proc. xiphoideus	211	Incisura angularis
155	Mamma	212	Curvatura minor
156	Manubrium	213	Pylorus
157	Mm. intercostales interni	214	A. gastromentalis dextra
158	M. transversus thoracis	215	A. gastromentalis sinistra
159	Costa VI	216	A. gastrica dextra
160	Costa V	217	A. gastrica sinistra
161	Costa IV	218	Incisura cardiaca
162	Costa III	219	Plicae gastricae
163	Costa II	220	Cardia
164	Costa I	221	A. splenica
165	Lobus superior	222	Pancreas
166	Fissura obliqua	223	Ductus pancreaticus
167	Lobus inferior	224	Colon descendens
168	Lobus medius	225	Caecum
169	Fissura horizontalis	226	Ostium valvae iliocaecale
170	Truncus pulmonalis		
171	Auricula sinistra		

Latin

- 227 Colon ascendens
228 Ileum
229 Jejunum
230 Flexura coli dextra
231 Colon transversum
232 Taenia omentalis
233 Duodenum
234 V. splenica
235 A. mesenterica superior
236 Ductus choledochus
237 Pars descendens duodeni
238 Pars horizontalis duodeni
239 Taenia mesocolica
240 Haustra coli
241 Mesenterium
242 Appendix vermiformis
243 Pars ascendens duodeni
244 Flexura coli sinistra
245 Taenia libera
246 A. colica media
247 A. colica sinistra
248 V. colica sinistra
249 A. mesenterica inferior
250 Ostium appendicis vermiformis
251 V. colica dextra
252 A. colica dextra
253 V. mesenterica superior
254 V. colica media
255 M. transversus perinei superficialis
et profundus
256 M. bulbospongiosus
257 Vagina
258 M. sphincter ani externus
259 Anus
260 Labium majus pudendi
261 Labium minus pudendi
262 V. iliaca externa
263 A. iliaca externa
264 A. ovarica
265 V. ovarica
266 Uterus
267 Lig. teres uteri
268 Lig. ovarii proprium
269 Tuba uterina
270 Ovarium
271 Plica transversa recti
272 Canalis cervicis uteri
273 Ostium uteri
274 M. sphincter ani internus
275 Urethra
276 Clitoris
277 Symphysis pubica
278 Lig. umbilicale medianum
279 Placenta
280 Funiculus umbilicalis
281 Cavitas uteri
282 Ampulla tubae uterinae
283 Infundibulum tubae uterinae
et fimbriae tubae
284 A. testicularis
285 V. testicularis
286 Penis
287 M. cremaster
288 Glans penis
289 Fascia spermatica externa
290 Tunica dartos
291 Testis
292 Epididymis
293 A. testicularis
294 Plexus pampiniformis
295 Vesicula seminalis
296 Scrotum
297 Ductus deferens
298 Prostata
299 Corpus spongiosum penis
300 Corpus cavernosum penis
301 Ductus ejaculatorius

B36 African Torso, unisex, 14 pieces

English

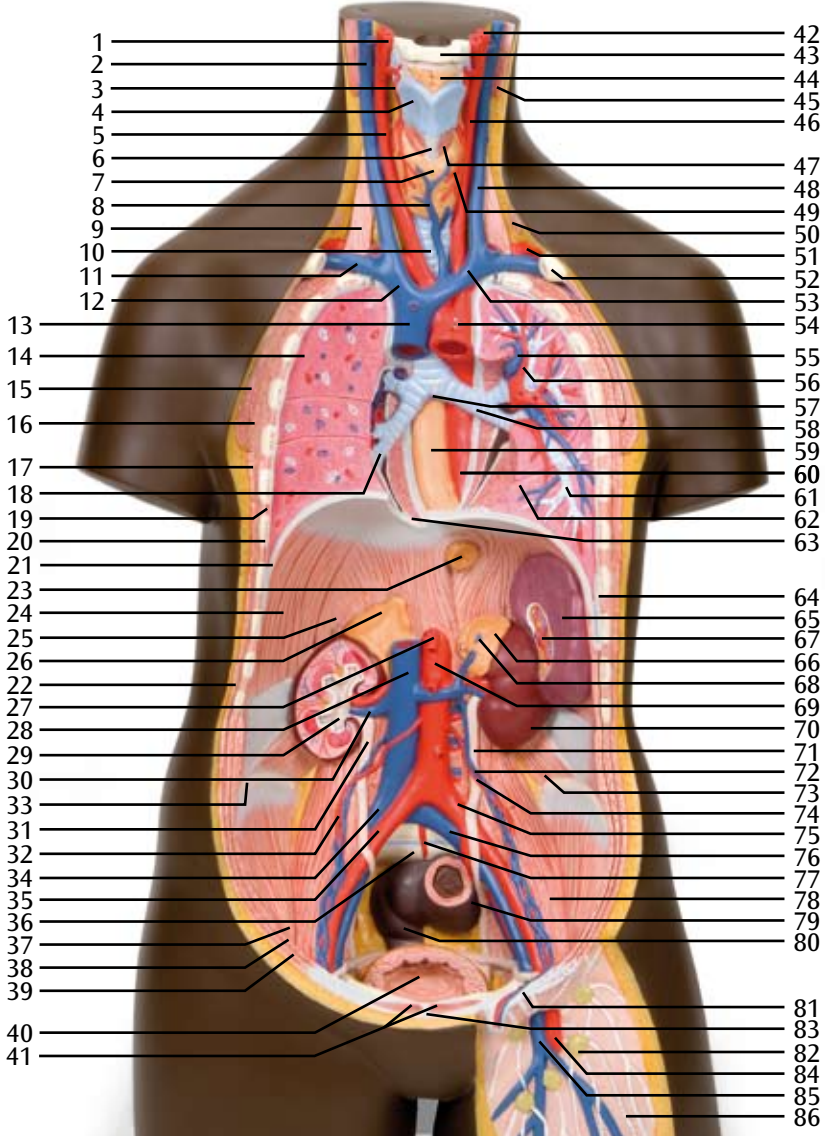
B37 African Torso, dual sex, 24 pieces

- 1 Right external carotid artery
- 2 Right internal jugular vein
- 3 Right superior thyroid artery
- 4 Thyroid cartilage
- 5 Right common carotid artery
- 6 Cricoid cartilage
- 7 Thyroid gland
- 8 Inferior thyroid vein
- 9 Scalenus anterior
- 10 Trachea
- 11 Right subclavian vein
- 12 Right brachiocephalic vein
- 13 Superior vena cava
- 14 Right lung
- 15 Pectoralis major
- 16 Pectoralis minor
- 17 Serratus anterior
- 18 Right inferior lobar bronchus
- 19 External intercostal muscles
- 20 7th rib
- 21 Diaphragm
- 22 Obliquus externus abdominis
- 23 Abdominal part of oesophagus
- 24 Costal part of diaphragm
- 25 Diaphragm, lumbar part
- 26 Right suprarenal gland
- 27 Coeliac trunk
- 28 Inferior vena cava
- 29 Renal pelvis
- 30 Renal vein
- 31 Ureter
- 32 Right testicular/ovarica artery
- 33 Crest of ilium
- 34 Right common iliac vein
- 35 Right common iliac artery
- 36 Promontory
- 37 Iliacus
- 38 Transversus abdominis
- 39 Obliquus internus abdominis
- 40 Urinary bladder
- 41 Rectus abdominis
- 42 Left internal carotid artery
- 43 Hyoid bone
- 44 Preepiglottic fat pad
- 45 Sternocleidomastoid
- 46 Left common carotid artery
- 47 Cricothyroid
- 48 Left internal jugular vein
- 49 Left superior thyroid artery
- 50 Inferior belly of omohyoid muscle
- 51 Left subclavian artery
- 52 Clavicle
- 53 Left brachiocephalic vein
- 54 Ascending aorta
- 55 Left pulmonary artery
- 56 Superior left pulmonary vein
- 57 Bifurcation of trachea
- 58 Left principal bronchus
- 59 Oesophagus
- 60 Thoracic part of aorta
- 61 Bronchus of left inferior lobe
- 62 Left lung
- 63 Caval opening
- 64 Parietal pleura
- 65 Spleen
- 66 Left suprarenal gland
- 67 Hilum of spleen
- 68 Left suprarenal vein
- 69 Abdominal aorta
- 70 Left kidney
- 71 Left ureter
- 72 Left testicular/ovarian vein
- 73 Quadratus lumborum
- 74 Left testicular/ovarian artery
- 75 Left common iliac artery
- 76 Left common iliac vein
- 77 Median sacral artery
- 78 Psoas major
- 79 Sigmoid colon
- 80 Rectum
- 81 Inguinal ligament
- 82 Lymph node
- 83 White line of abdomen
- 84 Femoral artery
- 85 Femoral vein
- 86 Lymph vessel
- 87 Brain
- 88 Cranial dura mater
- 89 Frontal bone
- 90 Temporalis
- 91 Eye
- 92 Zygomatic bone
- 93 Maxilla
- 94 Nasal bone

English

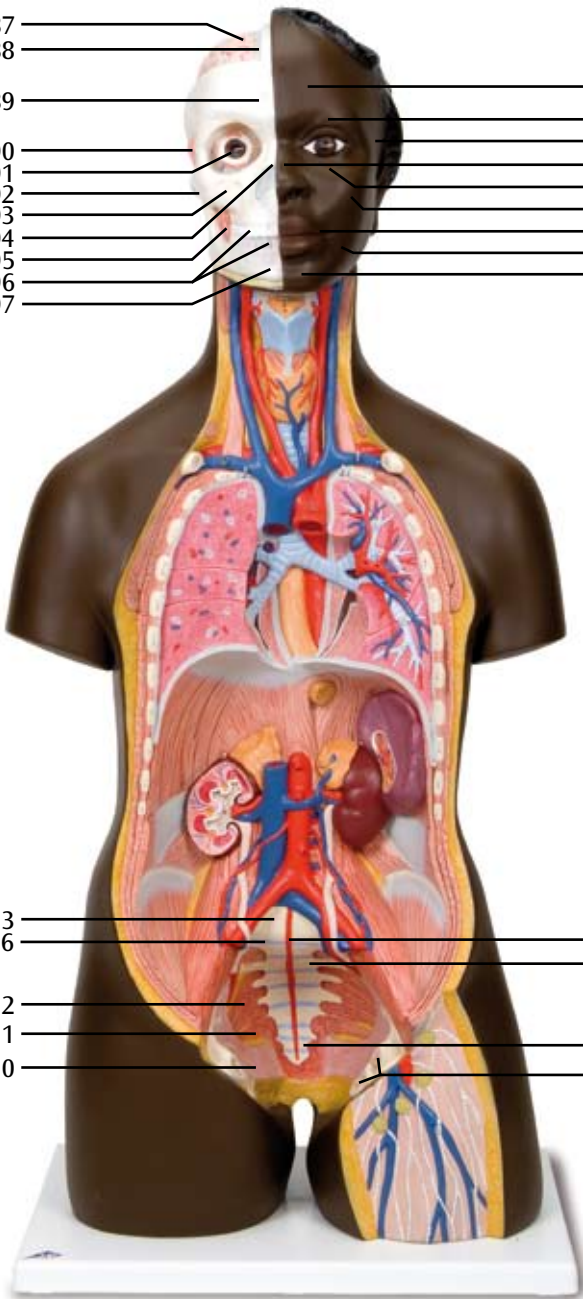
95	Masseter	148	Areolar glands
96	Teeth	149	Costal cartilage
97	Mandible	150	11th rib
98	Frontal region	151	10th rib
99	Orbital region	152	9th rib
100	Temporal region	153	8th rib
101	Nasal region	154	Xiphoid process
102	Infraorbital region	155	Mammary gland
103	Zygomatic region	156	Manubrium
104	Oral region	157	Internal intercostal muscles
105	Buccal region	158	Transversus thoracis
106	Chin region	159	6th rib
107	Sacral bone	160	5th rib
108	Coccygeal bone	161	4th rib
109	Pubic bone	162	3rd rib
110	Levator ani	163	2nd rib
111	Coccygeal muscle	164	1st rib
112	Piriformis	165	Superior lobe
113	Lumbar vertebra V	166	Oblique fissure
114	Helix	167	Inferior lobe
115	Triangular fossa	168	Middle lobe
116	Antihelix	169	Horizontal fissure
117	External acoustic meatus	170	Pulmonary trunk
118	Tragus	171	Left auricle
119	Antitragus	172	Great cardiac vein
120	Concha of auricle	173	Left coronary artery
121	Lobule of auricle	174	Left ventricle
122	Skin	175	Apex of heart
123	Parietal bone	176	Right ventricle
124	Coronal suture	177	Right coronary artery
125	Sphenoid	178	Right atrium
126	Coronoid process	179	Right auricle
127	Condylar process	180	Right pulmonary artery
128	Mental foramen	181	Right pulmonary veins
129	Mastoid process	182	Posterior interventricular branch
130	External acoustic opening	183	Middle cardiac vein
131	Occipital bone	184	Circumflex branch of left coronary artery
132	Temporal bone	185	Coronary sinus
133	Squamosal suture	186	Left pulmonary veins
134	Superior rectus	187	Left pulmonary artery
135	Tendon of superior oblique	188	Left atrium
136	Medial rectus	189	Tendinous cords of heart
137	Pupil	190	Papillary muscle
138	Iris	191	Interventricular septum
139	Eyeball	192	Tricuspid valve [Right atrioventricular valve]
140	Inferior oblique	193	Mitral valve [Left atrioventricular valve]
141	Lateral rectus	194	Aortic valve
142	Optic nerve	195	Pulmonary valve
143	Inferior rectus	196	Liver
144	Sternum	197	Right lobe of liver
145	Mammary gland	198	Left lobe of liver
146	Nipple	199	Gallbladder
147	Areola	200	Quadrangle lobe

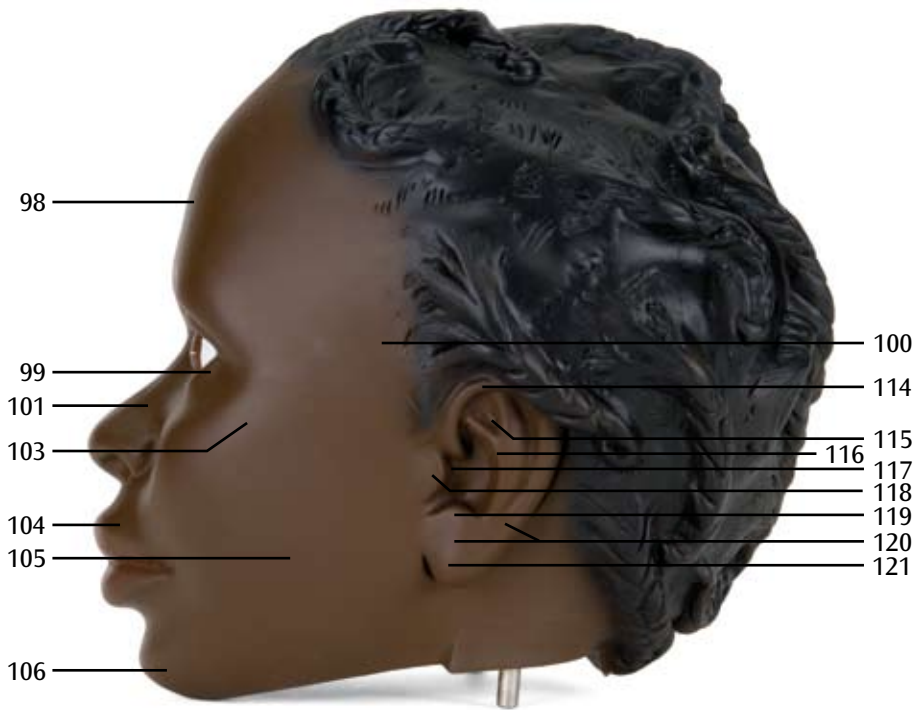
- 201 Proper hepatic artery
202 Round ligament of liver
203 Hepatic portal vein
204 Caudate lobe of liver
205 Stomach
206 Fundus of stomach
207 Body of stomach
208 Greater curvature
209 Greater omentum
210 Pyloric antrum
211 Angular incisure
212 Lesser curvature
213 Pylorus
214 Right gastro-omental artery
215 Left gastro-omental artery
216 Right gastric artery
217 Left gastric artery
218 Cardiac notch
219 Gastric folds
220 Cardia
221 Splenic artery
222 Pancreas
223 Pancreatic duct
224 Descending colon
225 Caecum
226 Ostium of ileocaecal valve
227 Ascending colon
228 Ileum
229 Jejunum
230 Right colic flexure
231 Transverse colon
232 Omental taenia
233 Duodenum
234 Splenic vein
235 Superior mesenteric artery
236 Bile duct
237 Descending part of duodenum
238 Inferior part of duodenum
239 Mesocolic taenia
240 Haustra of colon
241 Mesentery
242 Appendix
243 Ascending part of duodenum
244 Left colic flexure
245 Free taenia
246 Middle colic artery
247 Left colic artery
248 Left colic vein
249 Inferior mesenteric artery
250 Orifice of vermiform appendix
251 Right colic vein
252 Right colic artery
253 Superior mesenteric vein
254 Middle colic vein
255 Superficial and deep transverse perineal muscle
256 Bulbospongiosus muscle
257 Vagina
258 Sphincter ani externus muscle
259 Anus
260 Labium majus
261 Labium minus
262 External iliac vein
263 External iliac artery
264 Ovarian artery
265 Ovarian vein
266 Uterus
267 Round ligament of uterus
268 Ligament of ovary
269 Uterine tube
270 Ovary
271 Transverse rectal fold
272 Cervical canal
273 Opening of uterus
274 Sphincter ani internus muscle
275 Urethra
276 Clitoris
277 Pubic symphysis
278 Median umbilical ligament
279 Placenta
280 Umbilical cord
281 Uterine cavity
282 Ampulla of uterine tube
283 Infundibulum and fimbriae of uterine tube
284 Testicular artery
285 Testicular vein
286 Penis
287 Cremaster muscle
288 Glans of penis
289 External spermatic fascia
290 Dartos fascia
291 Testis
292 Epididymis
293 Testicular artery
294 Spermatic plexus
295 Seminal vesicle
296 Scrotum
297 Deferent duct
298 Prostate
299 Corpus spongiosum penis
300 Corpus cavernosum penis
301 Ejaculatory duct

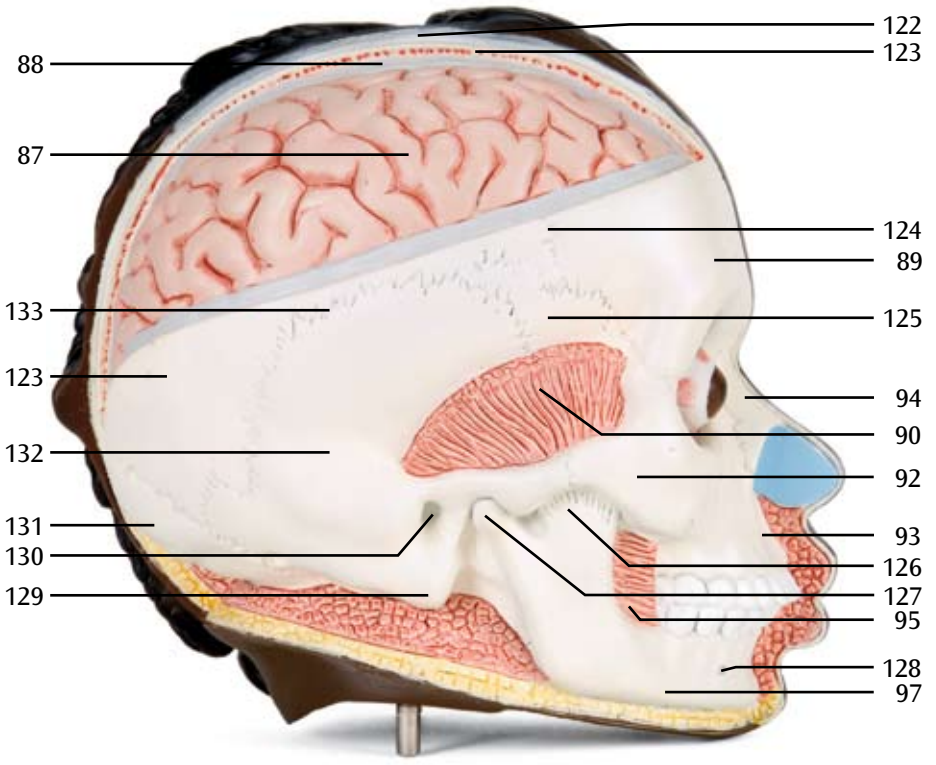


87	_____		
88	_____		
89	_____		98
90	_____		99
91	_____		100
92	_____		101
93	_____		102
94	_____		103
95	_____		104
96	_____		105
97	_____		106

113	_____		77
36	_____		107
112	_____		
111	_____		108
110	_____		109







88

87

133

123

132

131

130

129

122

123

124

89

125

94

90

92

93

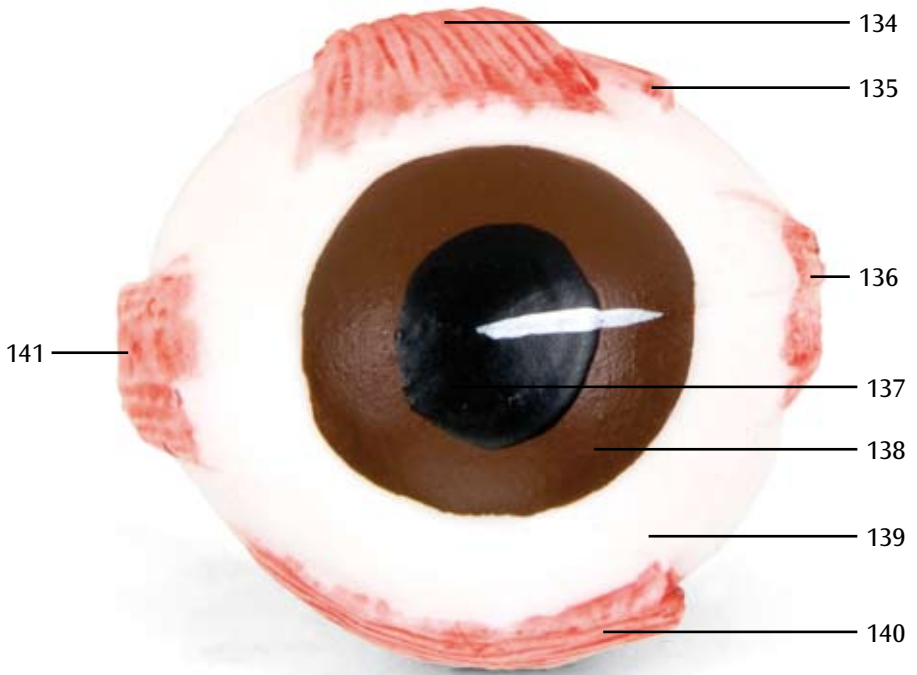
126

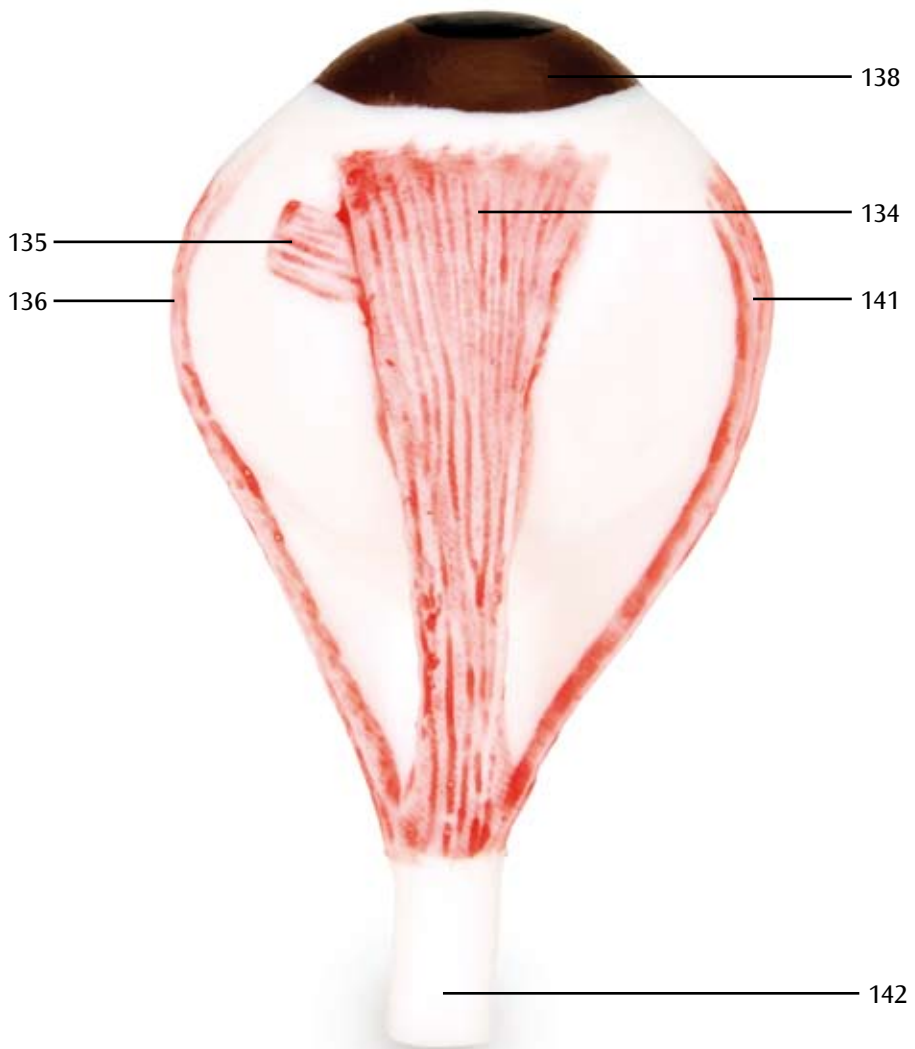
127

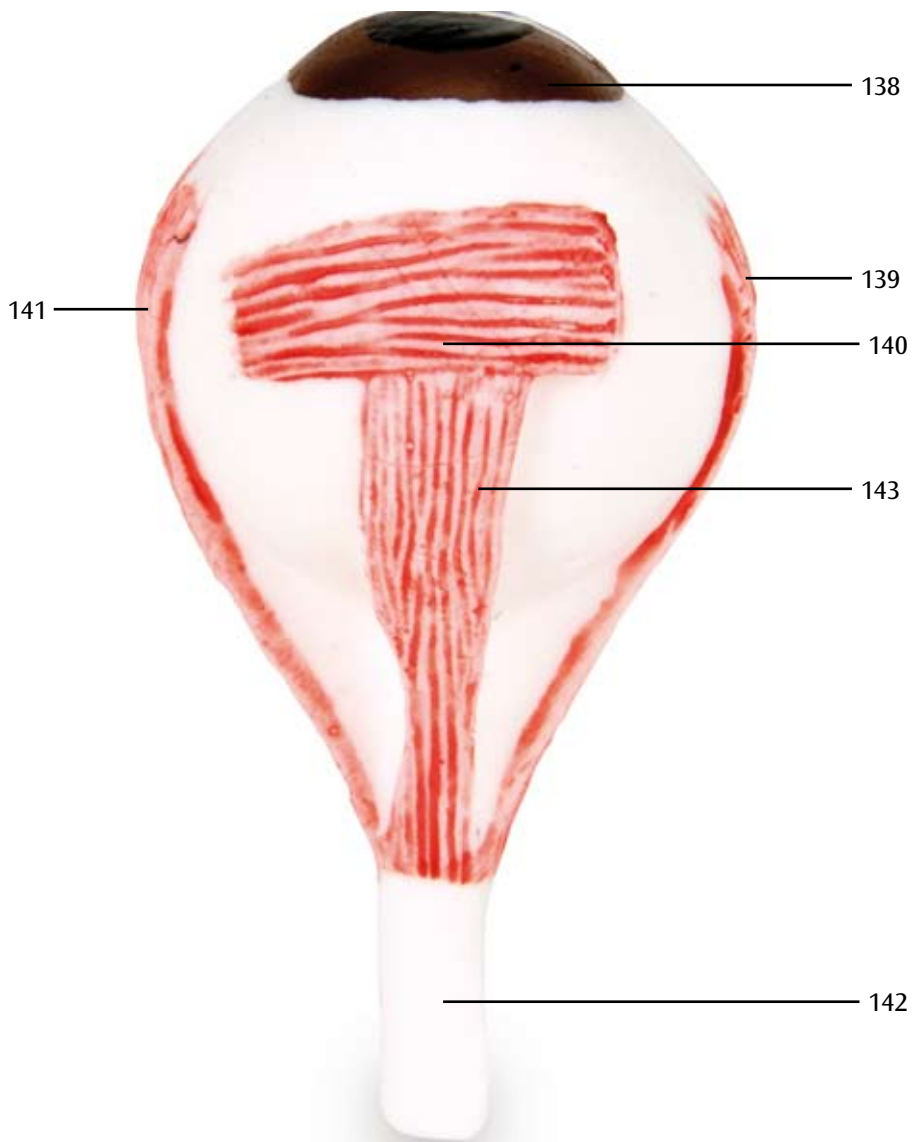
95

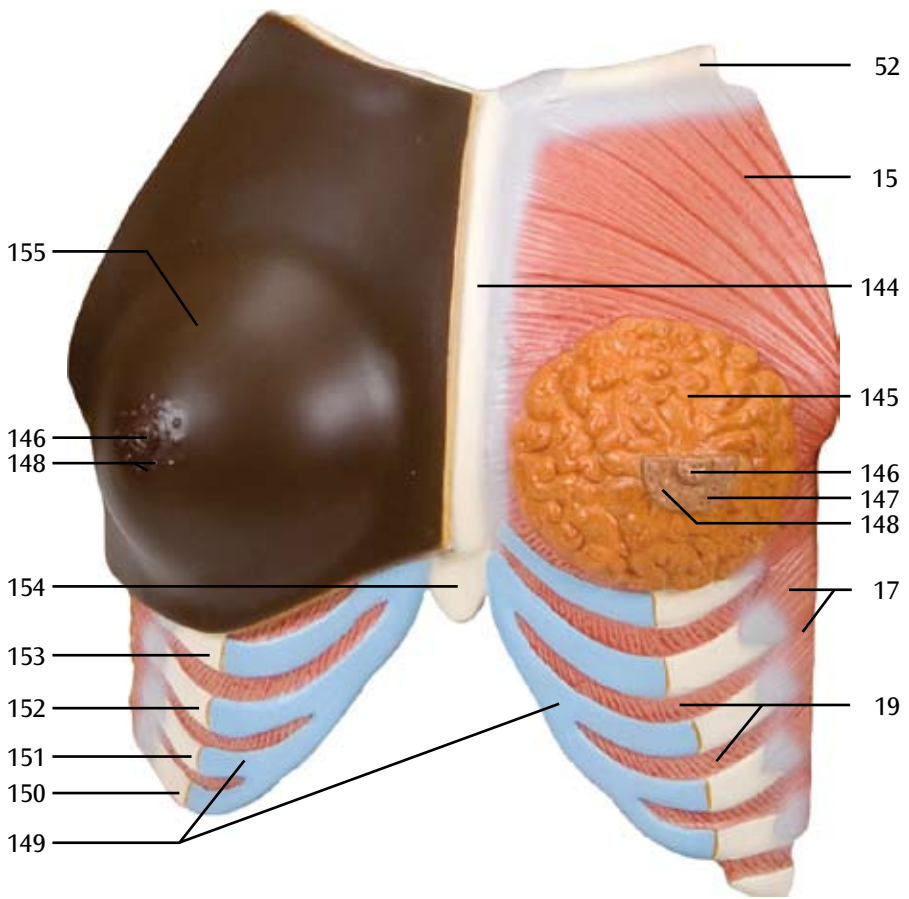
128

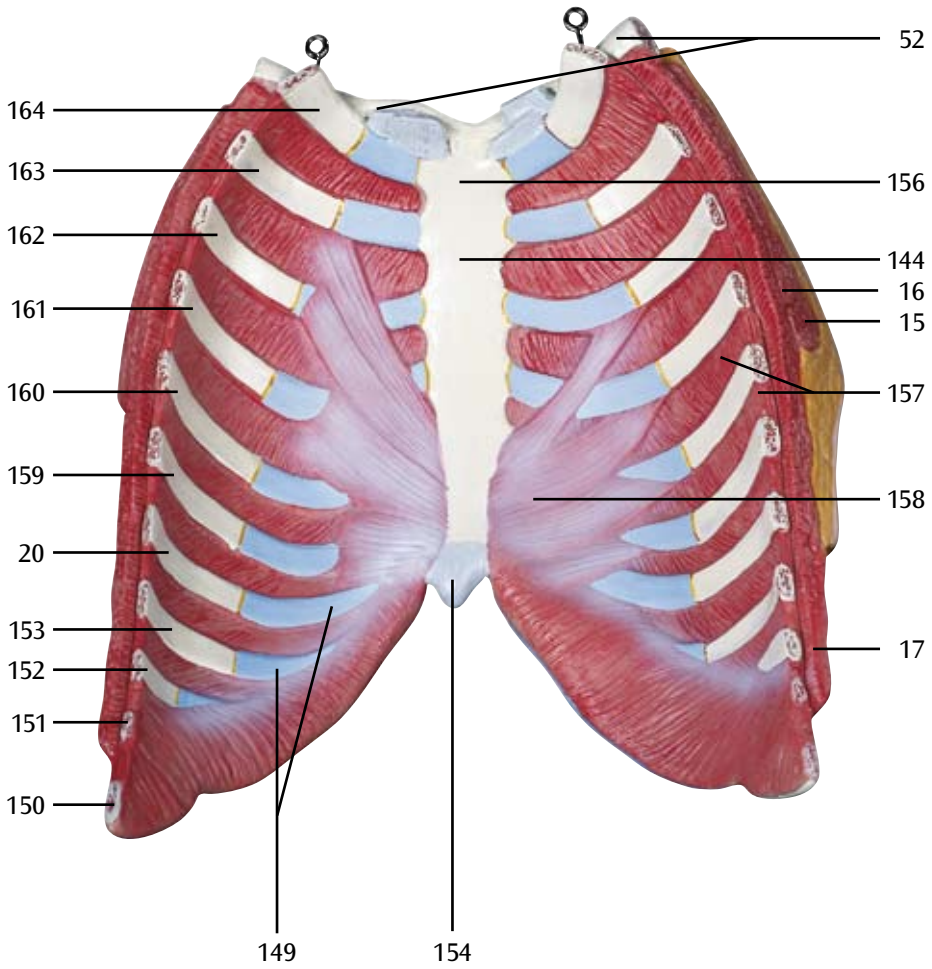
97

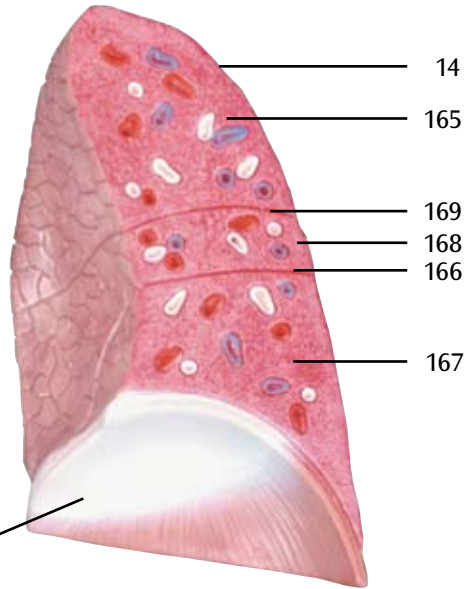
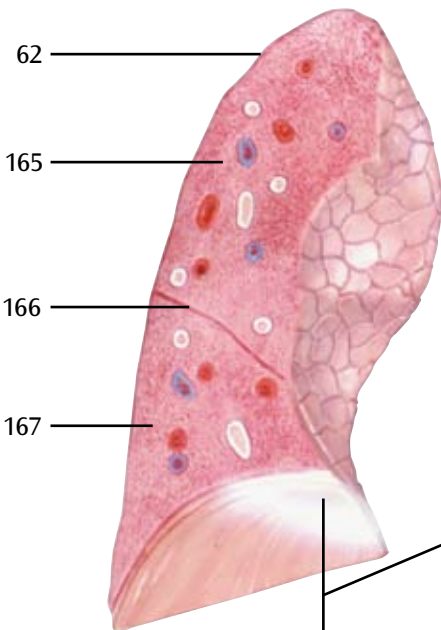
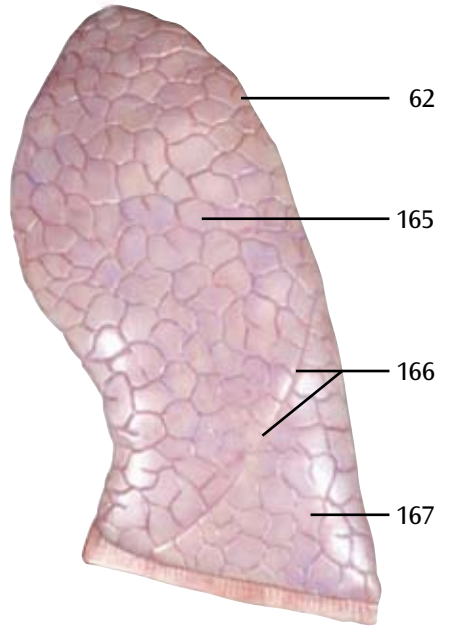
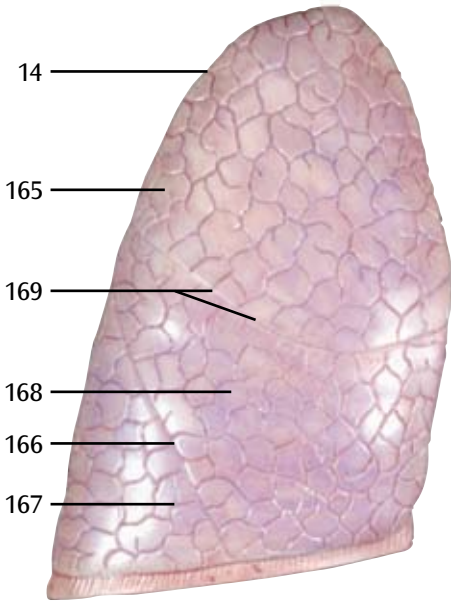


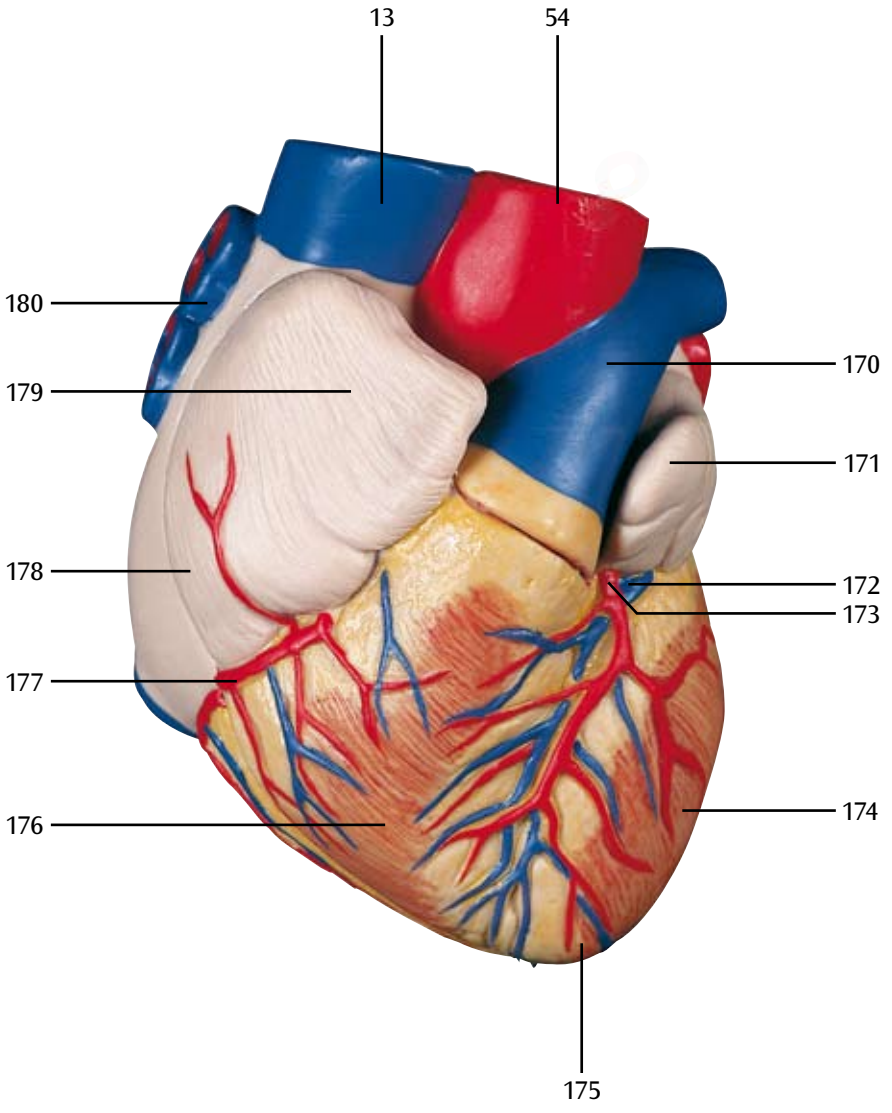


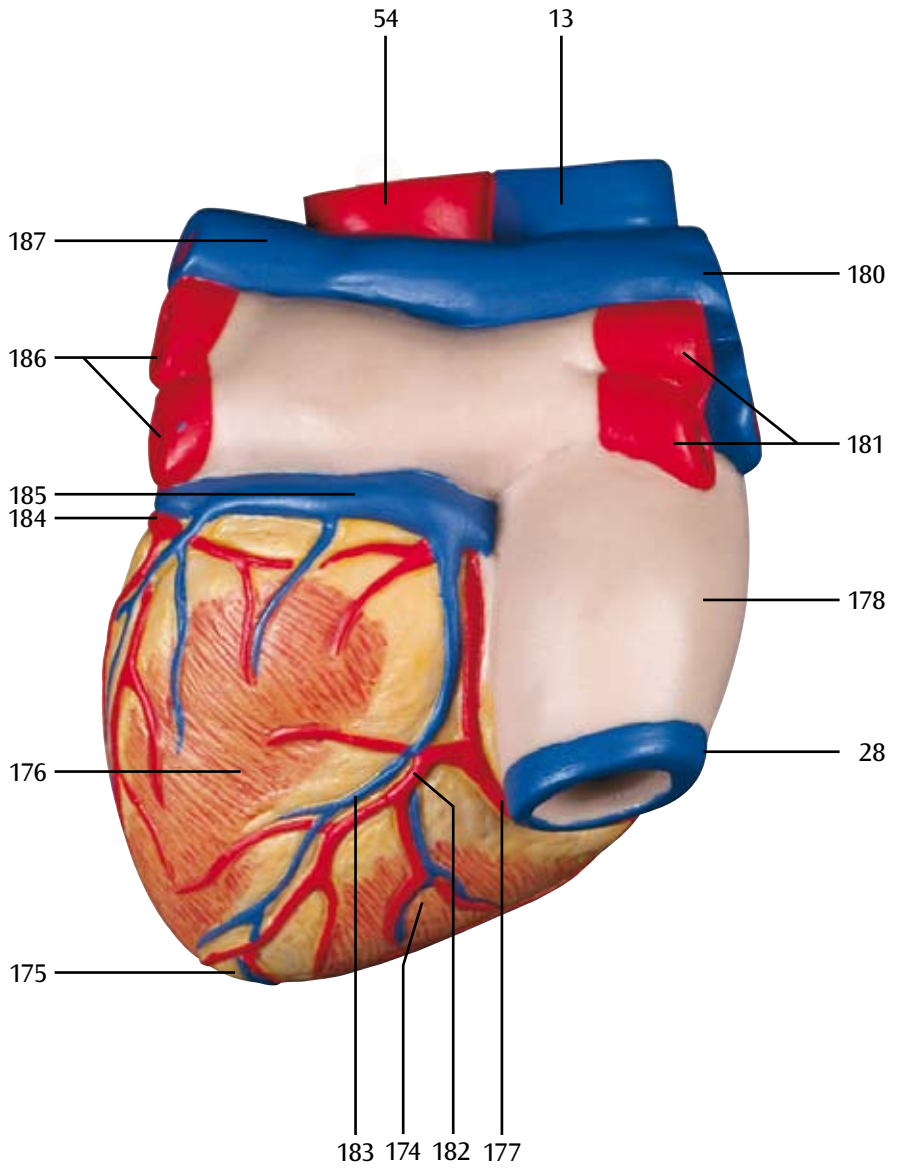


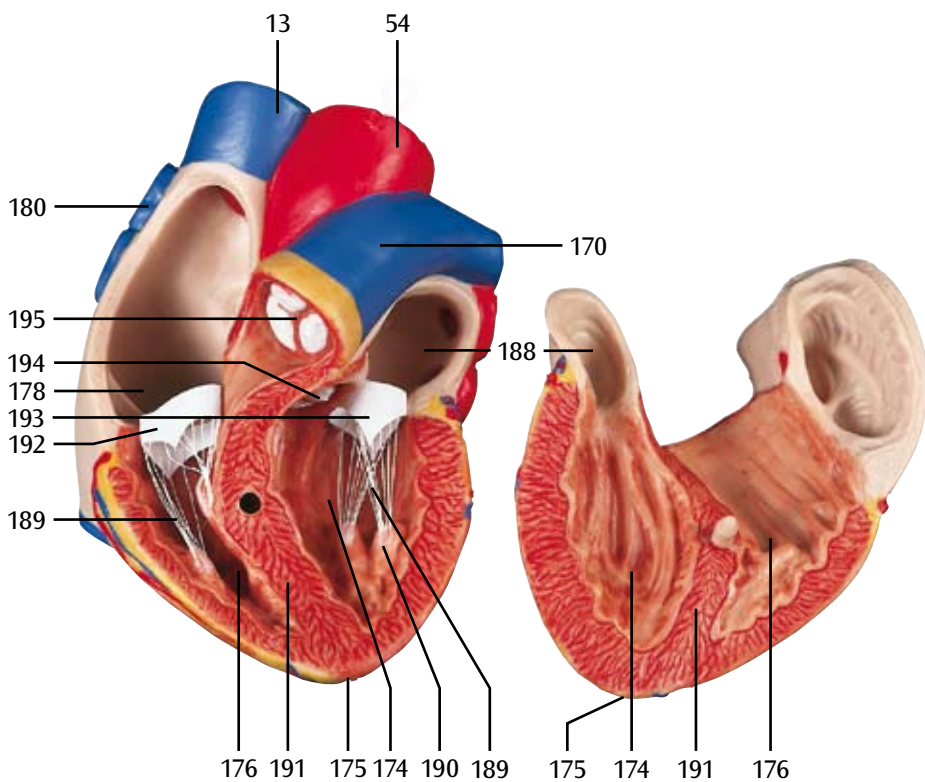


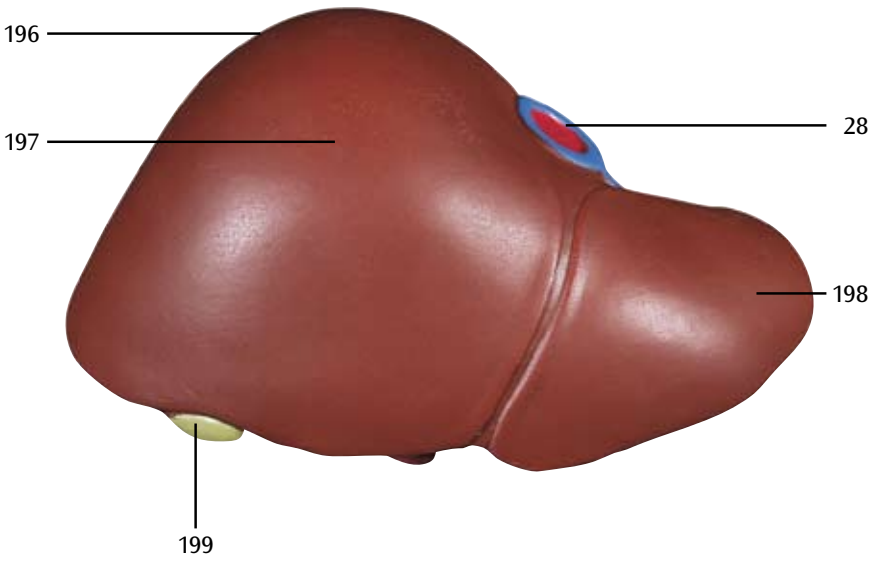


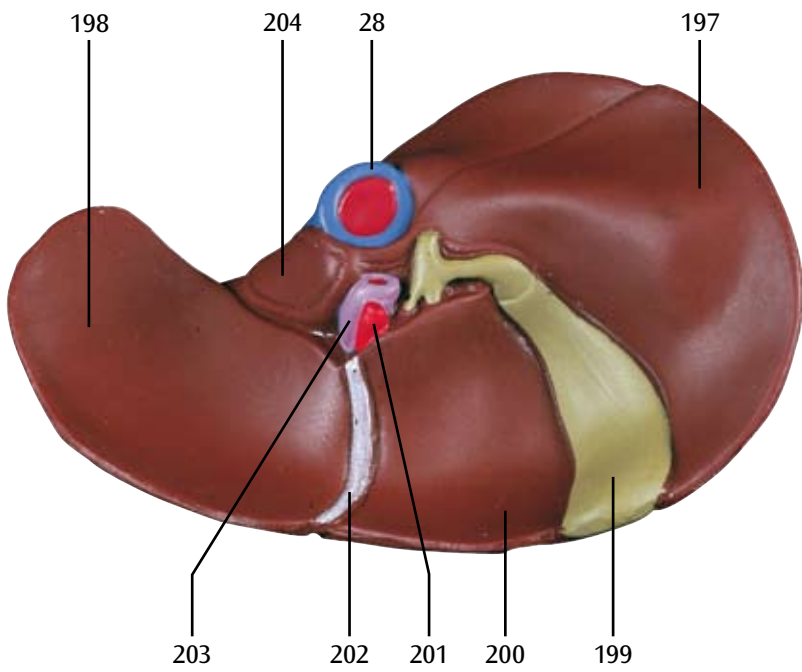


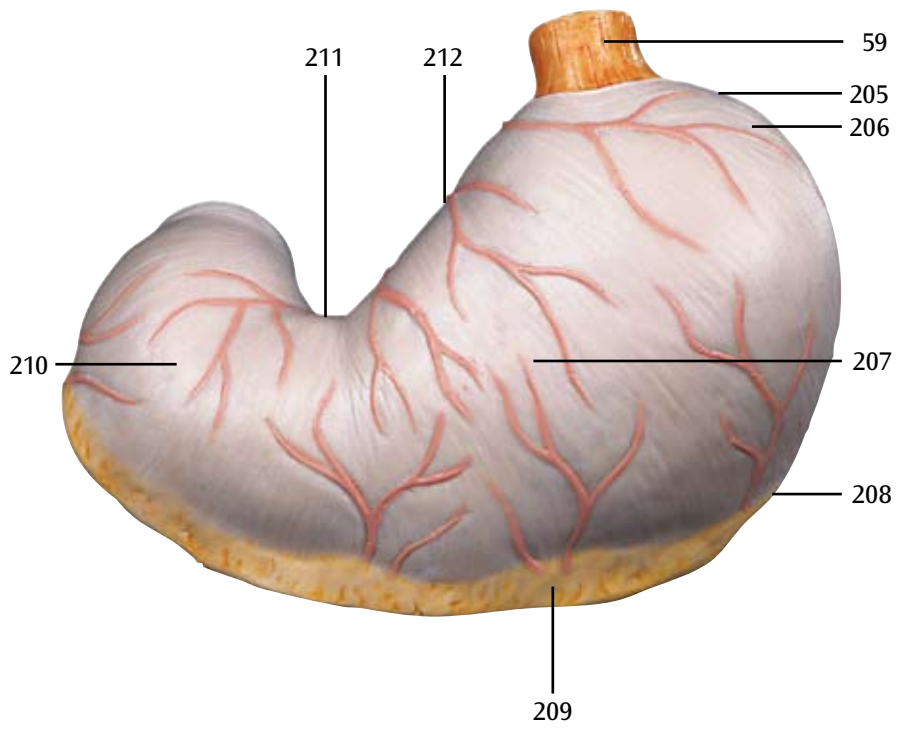


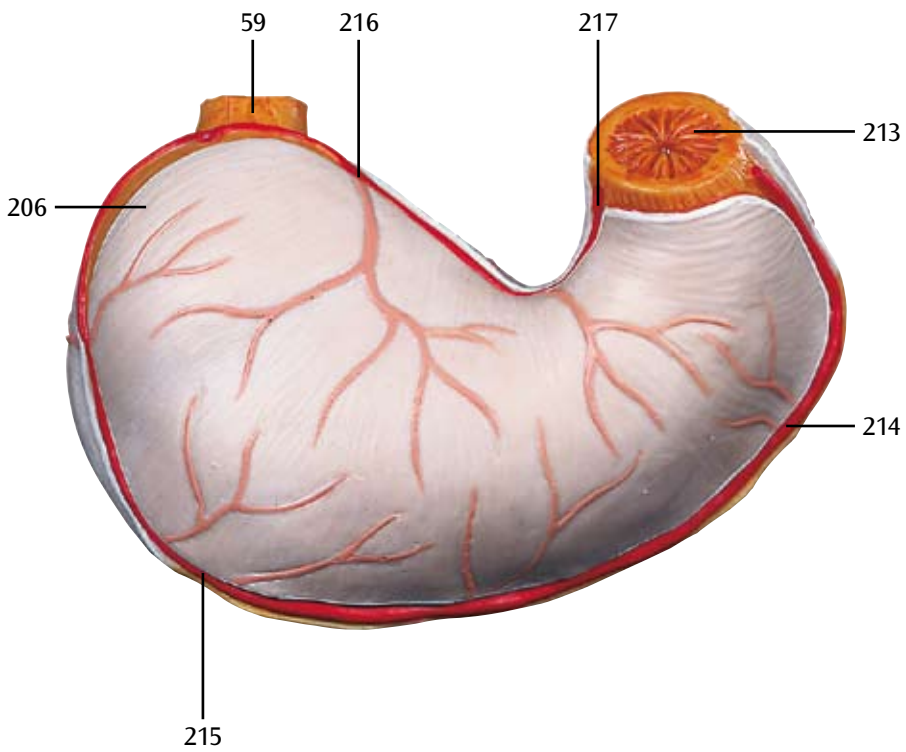


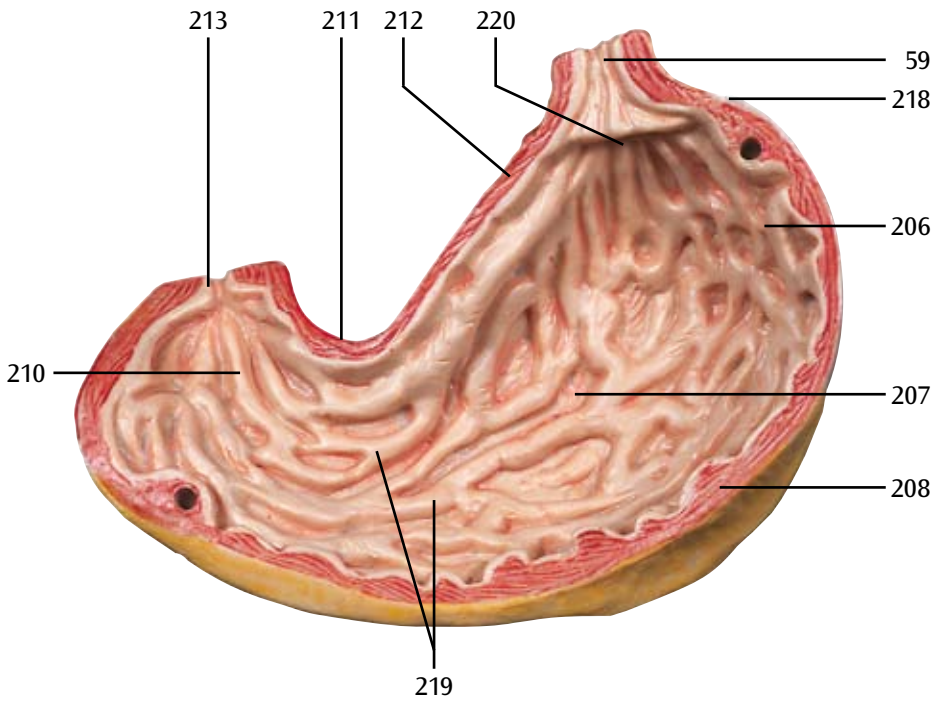


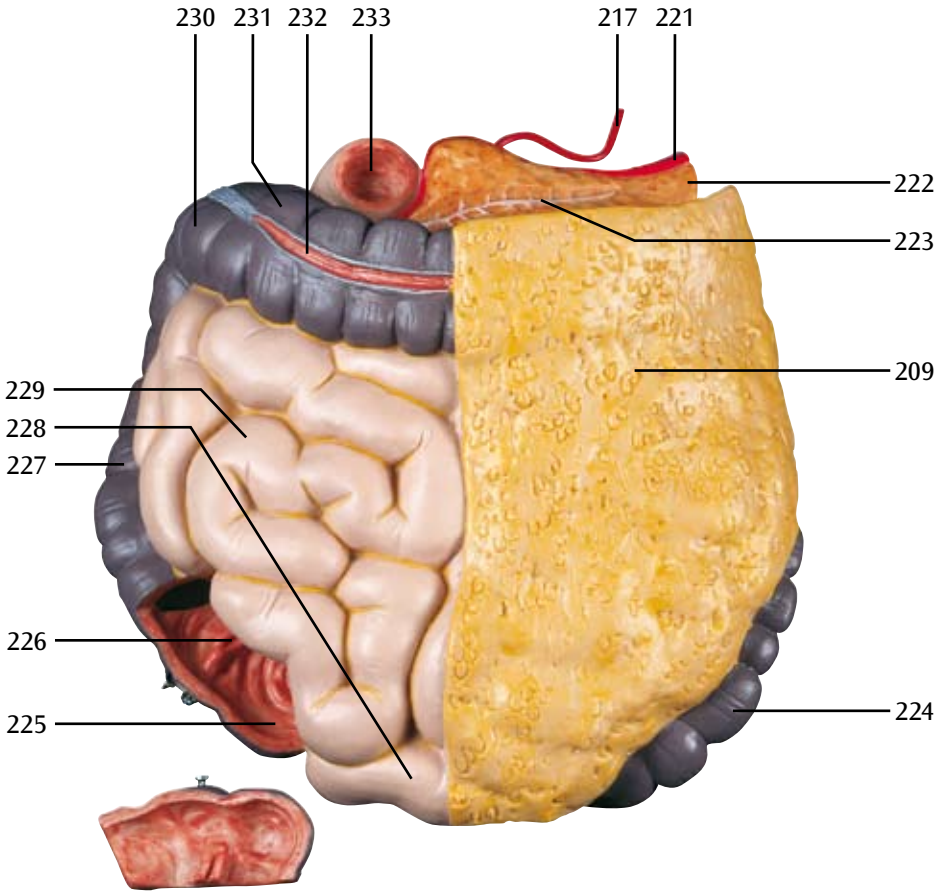


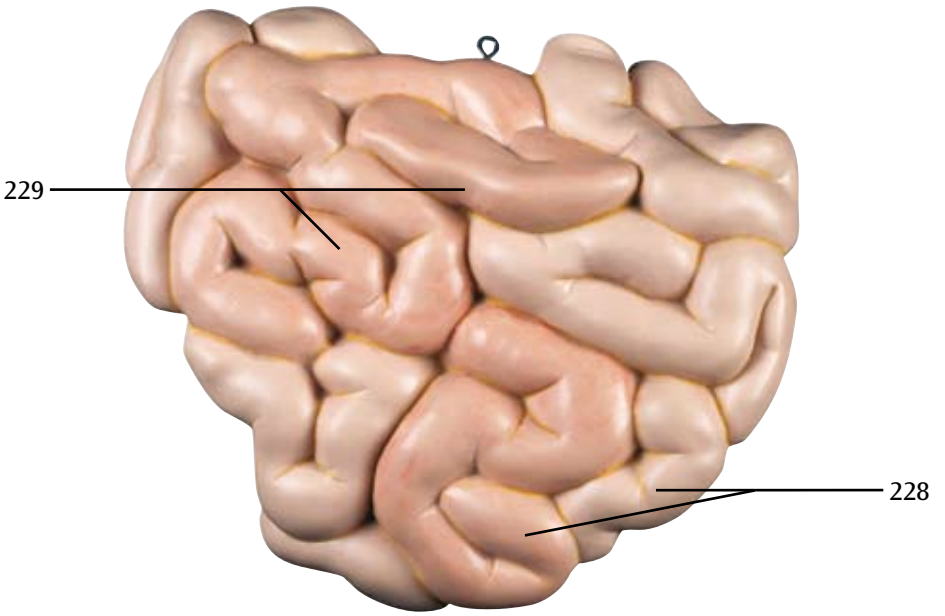


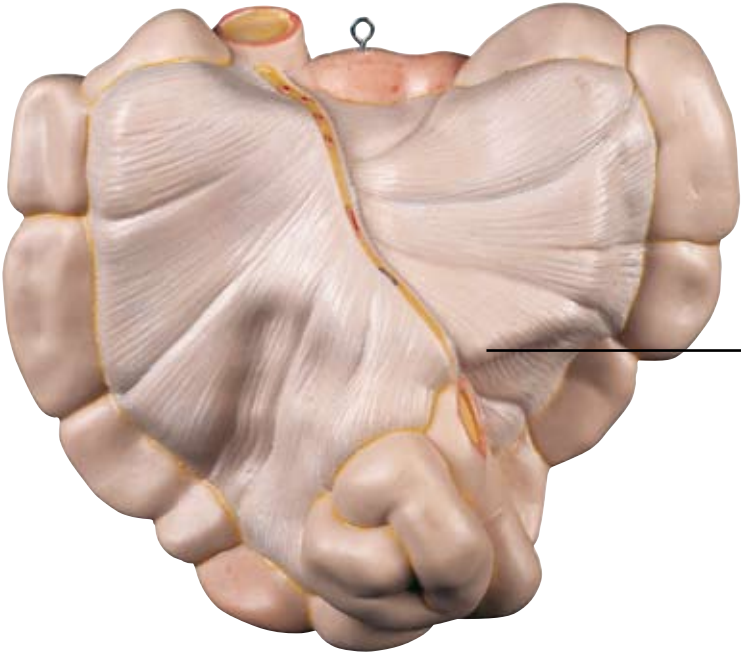




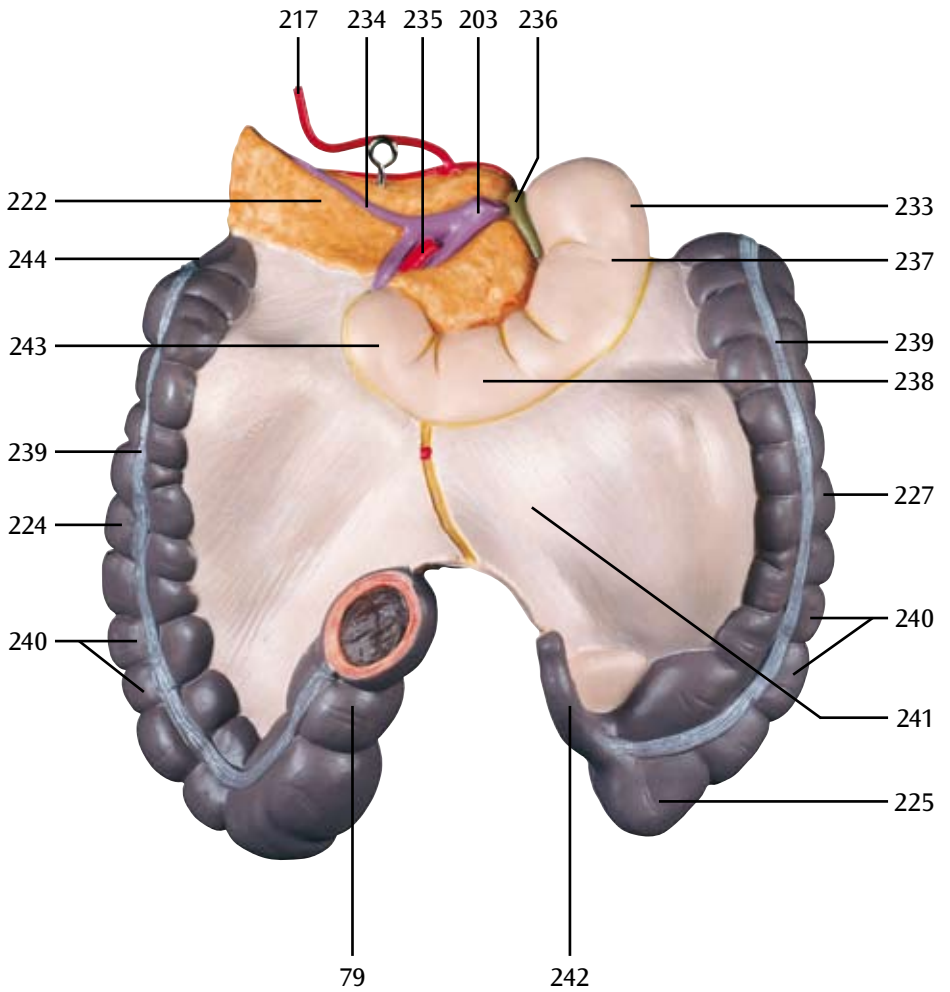


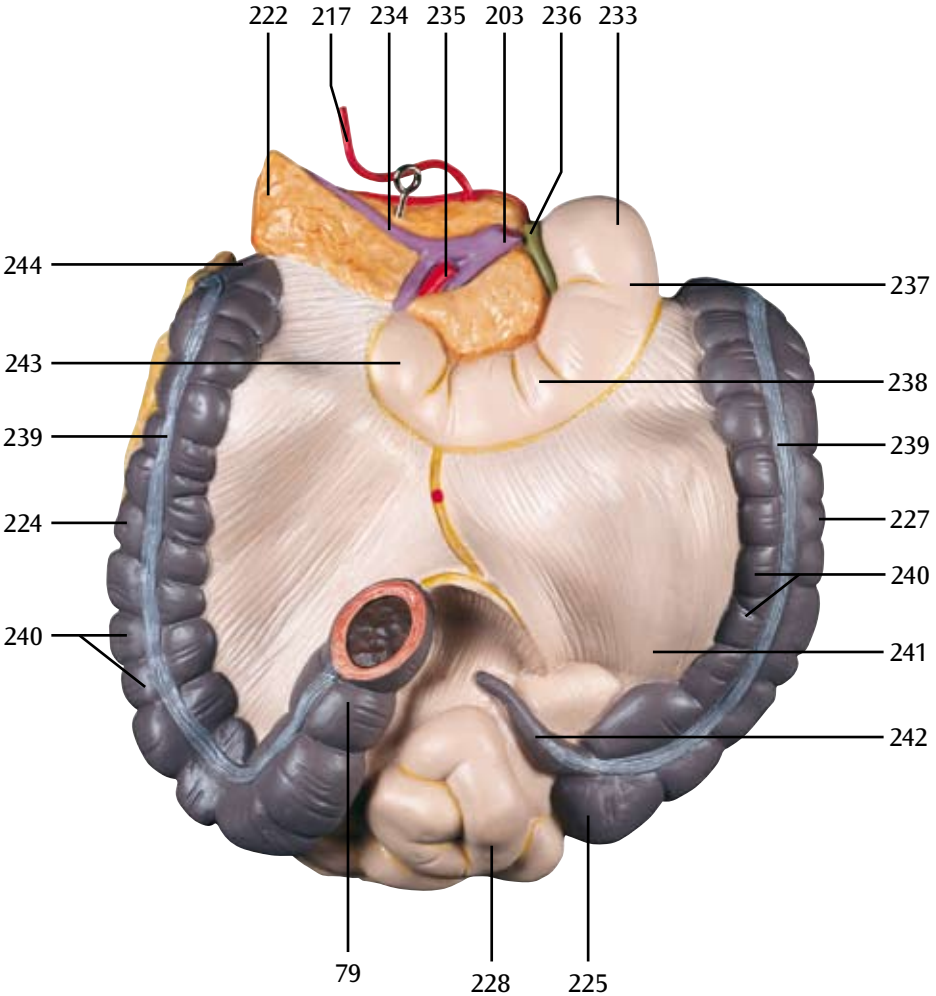


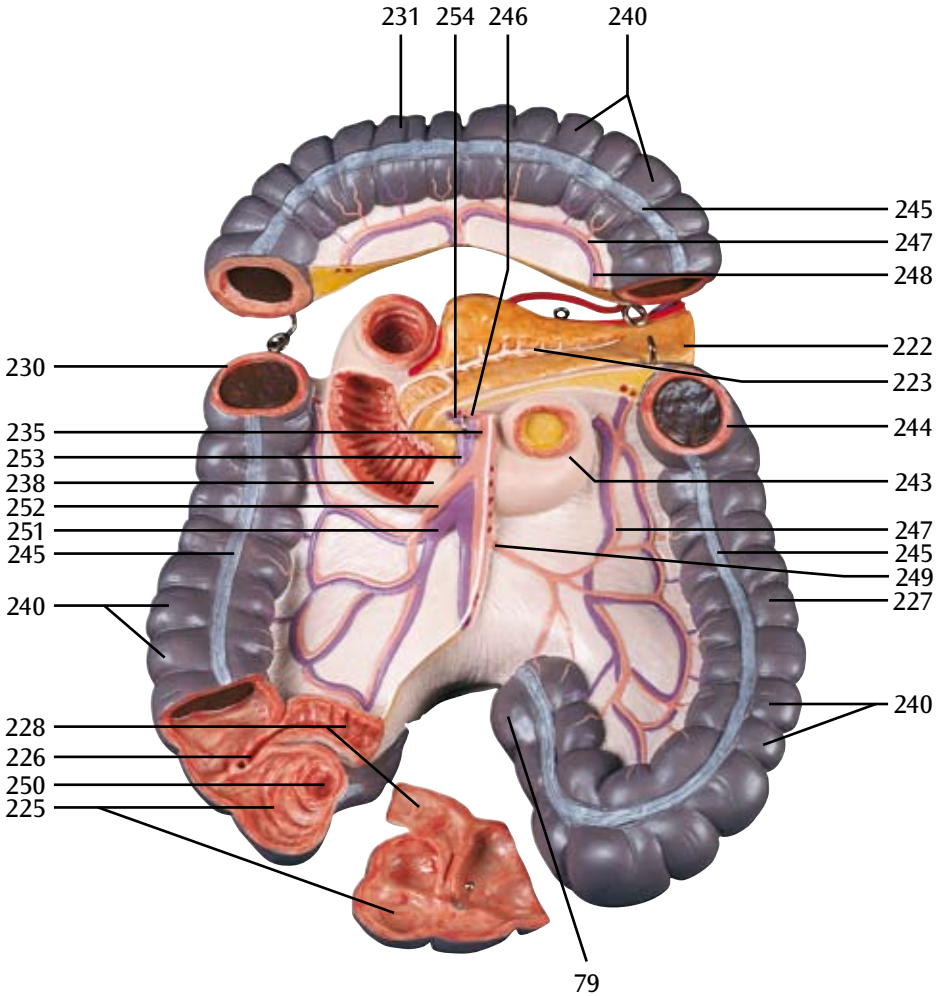


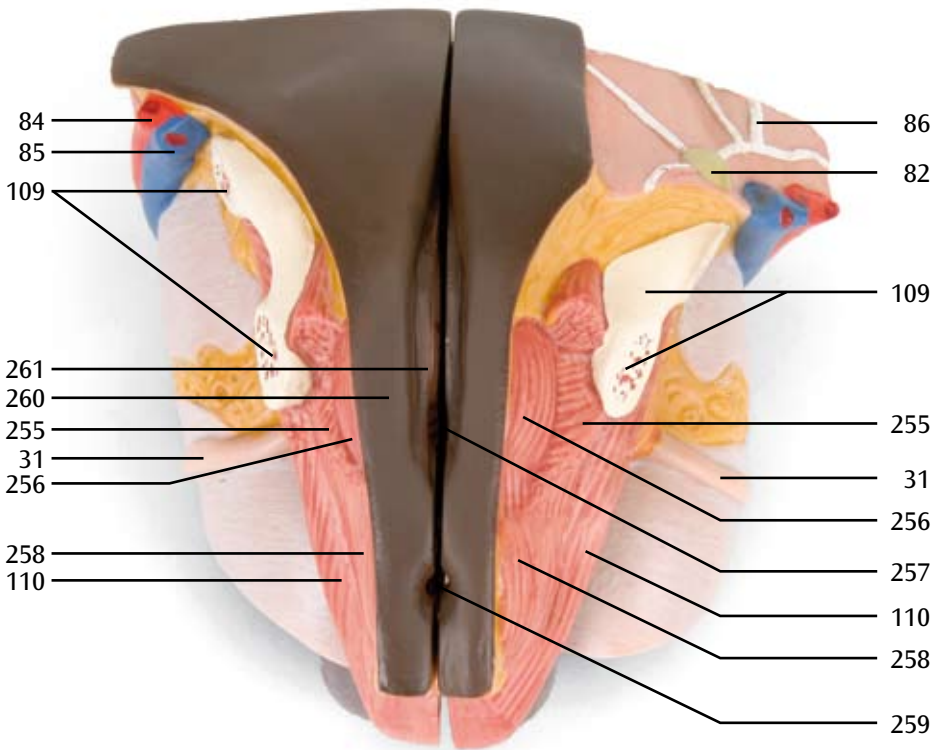


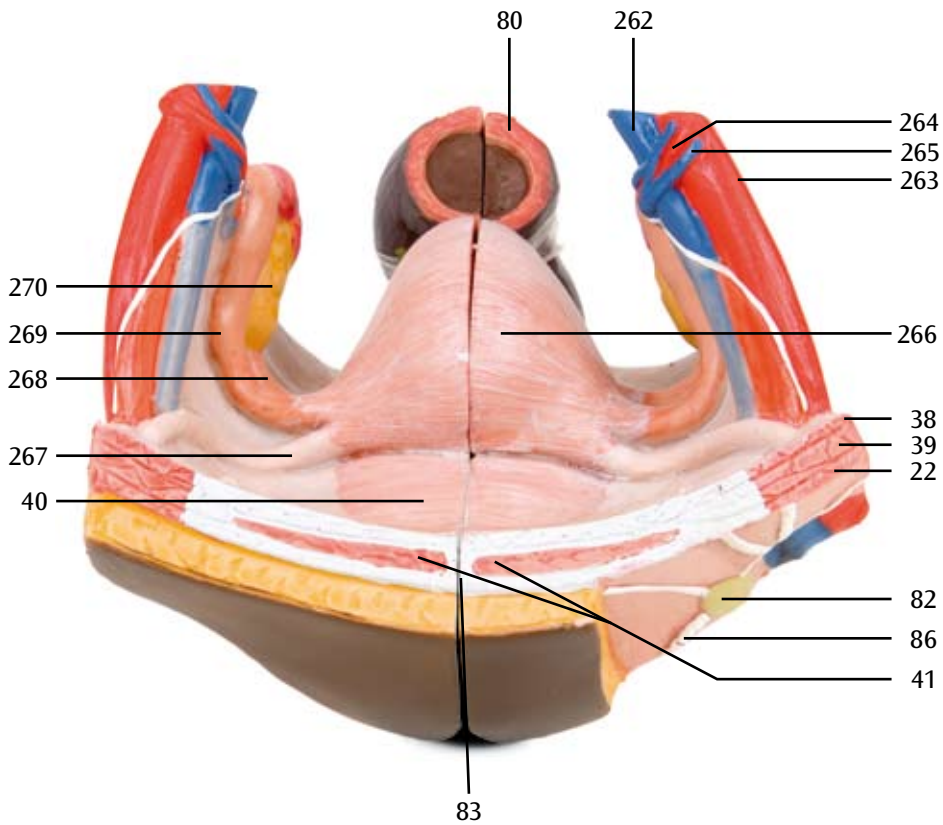
241

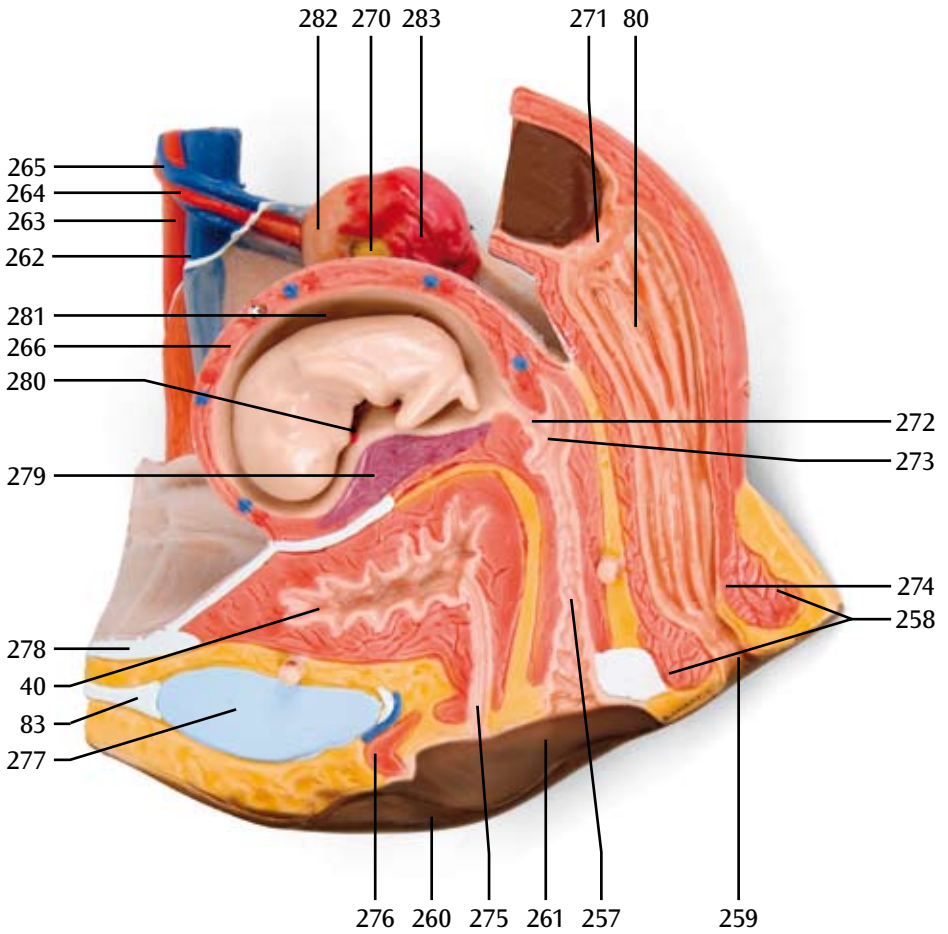


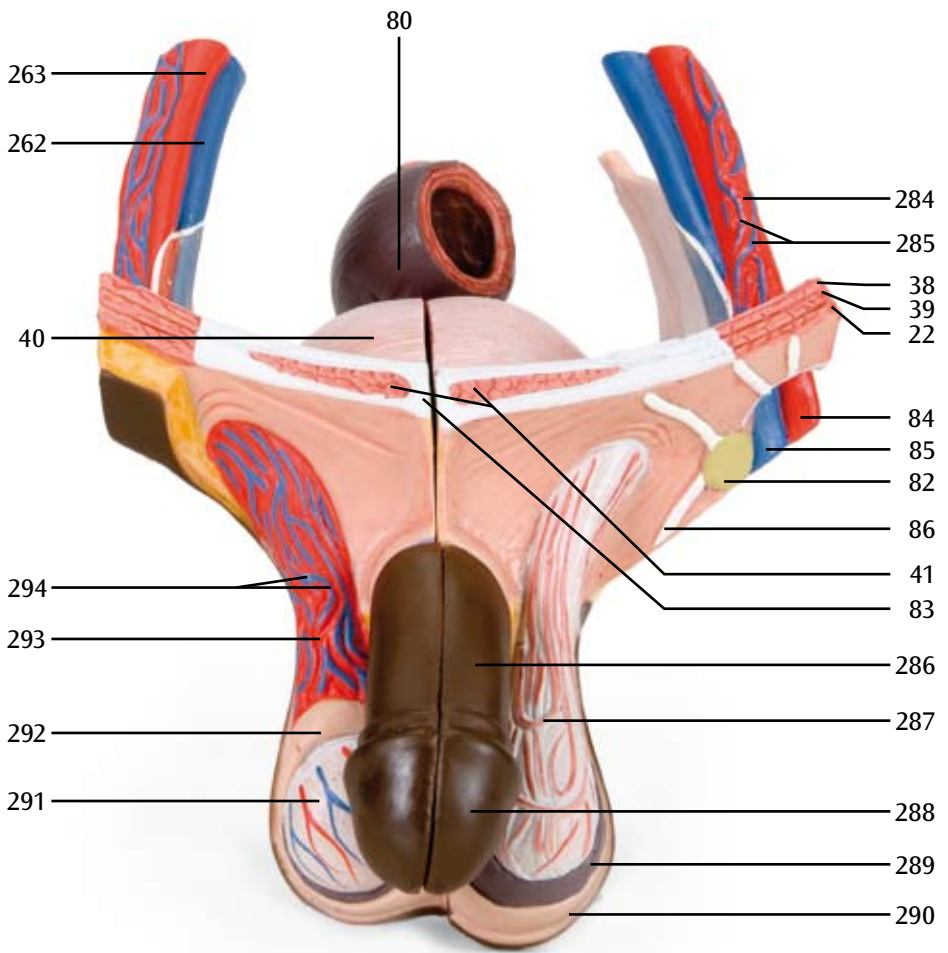


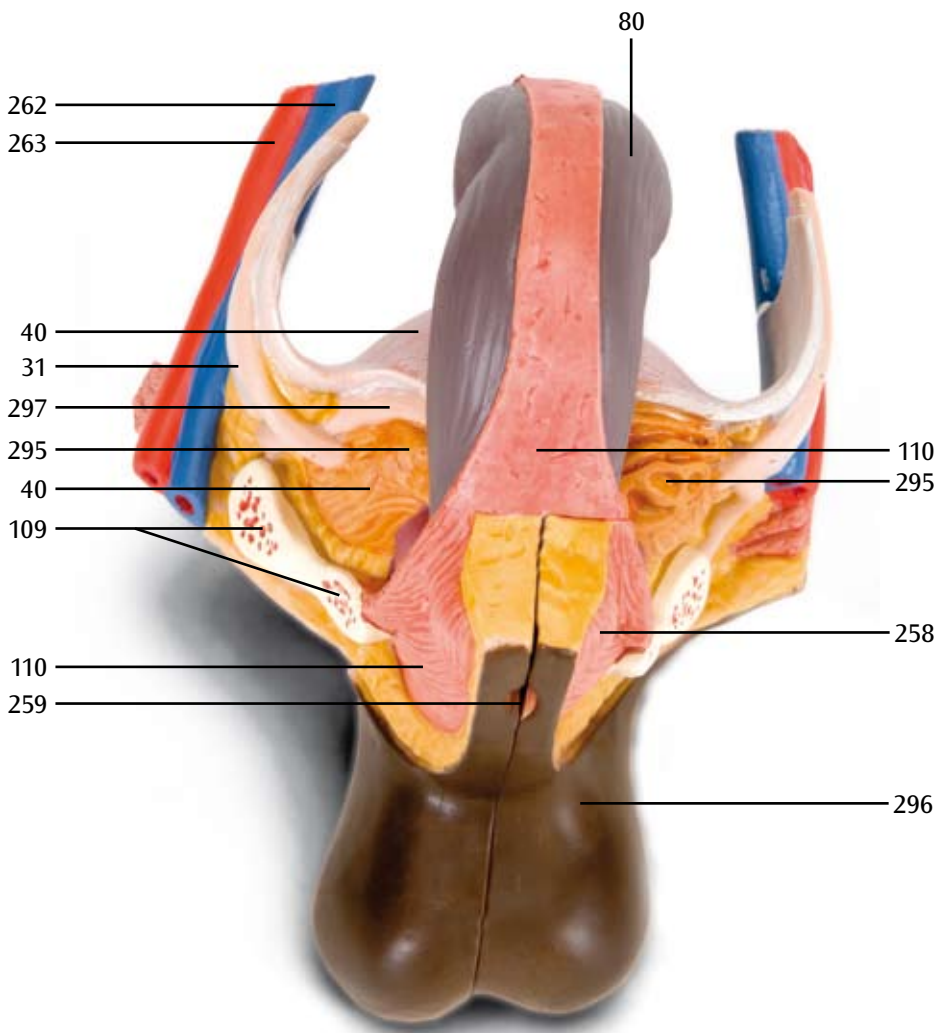












262
263

40
31
297
295
40
109

110
259

80

110
295

258

296

