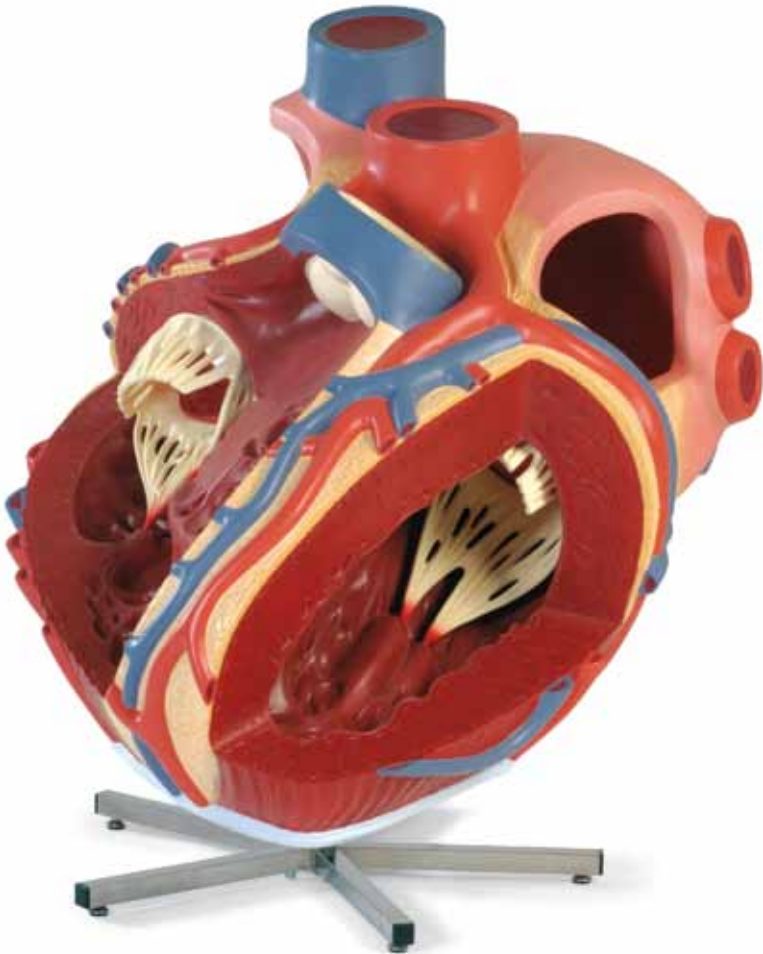




...going one step further



VD250

(1001244)

Latin

- 1 Atrium dextrum
- 2 Ventriculus dexter
- 3 M. papillaris anterior
- 4 M. papillaris posterior
- 5 Trabeculae carneaе
- 6 Atrium sinistrum
- 7 Ventriculus sinister
- 8 Septum interatriale
- 9 Septum interventriculare
- 10 Fossa ovalis
- 11 Valva atrioventricularis dextra [Valva tricuspidalis]
- 12 Valva atrioventricularis sinistra [Valva mitralis]
- 13 Pericardium
- 14 Valva trunci pulmonalis
- 15 Pars ascendens aortae
- 16 A. coronaria sinistra
- 17 Ramus interventricularis anterior
- 18 Ramus circumflexus
- 19 A. coronaria dextra
- 20 Truncus pulmonalis
- 21 Vv. pulmonales dextrae
- 22 Vv. pulmonales sinistrae
- 23 V. cava superior
- 24 V. cava inferior
- 25 V. cardiaca magna
- 26 Vv. cardiacaе anteriores
- 27 Apex cordis, incisura
- 28 Sinus coronarius



Giant Heart, 8 times life-size

English

- 1 Right atrium
- 2 Right ventricle
- 3 Anterior papillary muscle
- 4 Posterior papillary muscle
- 5 Trabeculae carneae
- 6 Left atrium
- 7 Left ventricle
- 8 Interatrial septum
- 9 Interventricular septum
- 10 Fossa ovalis
- 11 Tricuspid valve [Right atrioventricular valve]
- 12 Mitral valve [Left atrioventricular valve]
- 13 Pericardium
- 14 Pulmonary valve
- 15 Ascending aorta
- 16 Left coronary artery
- 17 Anterior interventricular branch of left coronary artery
- 18 Circumflex branch of left coronary artery
- 19 Right coronary artery
- 20 Pulmonary trunk
- 21 Right pulmonary veins
- 22 Left pulmonary veins
- 23 Superior vena cava
- 24 Inferior vena cava
- 25 Great cardiac vein
- 26 Anterior cardiac veins
- 27 Incisura of apex of heart
- 28 Coronary sinus

