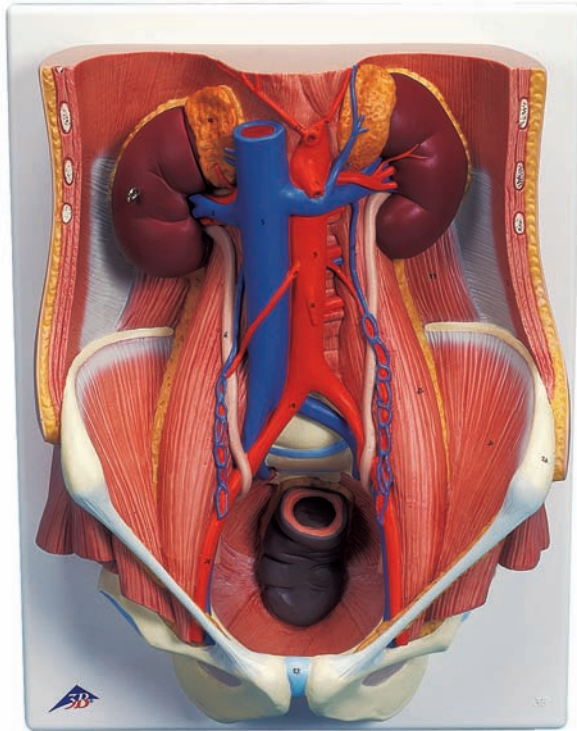




...going one step further



K32

Latin

- 1 Ren
 - a Cortex renalis
 - b Medulla renalis
 - c Pelvis renalis
 - d Calyx renalis
 - e Foramina papillaria
- 2 V. renalis
- 3 V. cava inferior
- 4 A. renalis
- 5 Pars abdominalis aortae
- 6 Ureter
- 7 Vesica urinaria
 - a Apex vesicae
 - b Fundus vesicae
 - c Corpus vesicae
 - d Ostium ureteris
 - e Trigonum vesicae
- 8 Urethra
- 9 Prostata
- 10 Glandula suprarenalis
- 11 Uterus
- 12 Truncus coeliacus
- 13 A. hepatica communis
- 14 A. splenica
- 15 A. mesenterica superior
- 16 A. mesenterica inferior
- 17 A. testicularis/ A. ovarica
- 18 V. testicularis/ V. ovarica
- 19 A. iliaca communis
- 20 A. iliaca externa
- 21 A. iliaca interna
- 22 M. transversus abdominis
- 23 M. quadratus lumborum
- 24 M. iliacus
- 25 M. psoas major
- 26 Spina iliaca anterior superior
- 27 Symphysis



Dual Sex Urinary System, 6-part

English

- 1 Kidney
 - a Renal cortex
 - b Renal medulla
 - c Renal pelvis
 - d Calyx
 - e Openings of papillary duct
- 2 Renal vein
- 3 Inferior vena cava
- 4 Renal artery
- 5 Abdominal aorta
- 6 Ureter
- 7 Urinary bladder
 - a Apex of bladder
 - b Fundus of bladder
 - c Body of bladder
 - d Ureteric orifice
 - e Trigone of bladder
- 8 Urethra
- 9 Prostate
- 10 Suprarenal gland
- 11 Uterus
- 12 Coeliac trunk
- 13 Common hepatic artery
- 14 Splenic artery
- 15 Superior mesenteric artery
- 16 Inferior mesenteric artery
- 17 Testicular artery/ Ovarian artery
- 18 Testicular vein/ Ovarian vein
- 19 Common iliac artery
- 20 External iliac artery
- 21 Internal iliac artery
- 22 Transversus abdominis
- 23 Quadratus lumborum
- 24 Iliacus
- 25 Psoas major
- 26 Anterior superior iliac spine
- 27 Pubic symphysis

