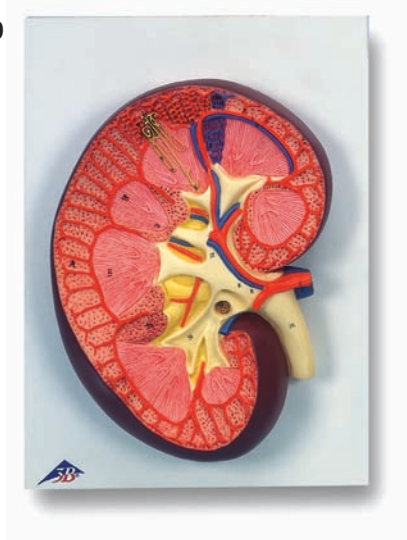
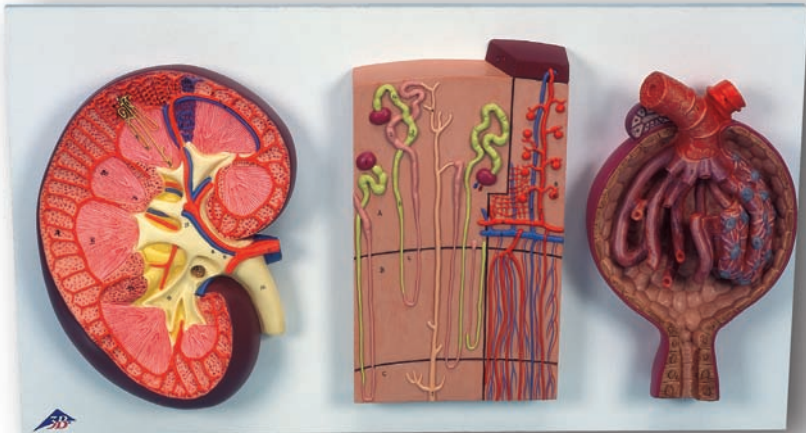


**K10**



**K11**



**K10, K11**

# K10 Kidney Section, 3 times full-size

## K11 Kidney Section, Nephrons, Blood Vessels and Renal Corpuscle

English

### K10 Kidney Section, 3 times full-size

- A Renal cortex
- B Renal medulla
- 1 Renal vein
- 2 Renal artery
- 3 Arcuate veins
- 4 Arcuate arteries
- 5 Vascular plexus
- 6 Cortical radiate vein [Interlobular vein]
- 7 Cortical radiate artery [Interlobular artery]
- 8 Afferent glomerular arteriole
- 10 Ureter
- 11 Renal pelvis
- 12 Major calices
- 13 Openings of papillary duct
- 14 Renale papillas
- 15 Papillary duct
- 16 Connecting Tubulus
- 17 HENLE's loop
- 18 Proximal part of straight renal tubulus
- 19 Renal corpuscle
- 20 Renal pyramids
- 21 Minor renal calices
- 22 Renal columns

- 9 Efferent glomerular arteriole
- 10 Glomerulus

### K10/2 Malpighian Corpuscle of Kidney, 700 times full-size

- 1 Afferent glomerular arteriole
- 2 Glomerulus
- 3 Efferent glomerular arteriole
- 4 Podocyte
- 5 Bowman's capsule
- 6 Proximal tubule
- 7 Distal tubule

### K10/1 Nephrons and Blood Vessels, 120 times full-size

- A Renal cortex
- B Renal medulla, outer zone
- C Renal medulla, inner zone
- 1 Renal corpuscle
- 2 Proximal tubule
  - a Proximal convolution
  - b Proximal straight tubule
  - c HENLE's loop
- 3 Distal tubule
- 4 Collecting tubule
- 5 Papillary duct
- 6 Arcuate artery and vein
- 7 Cortical radiate artery and vein  
[Interlobular artery and vein]
- 8 Afferent glomerular arteriole



**3B SCIENTIFIC® PRODUCTS**