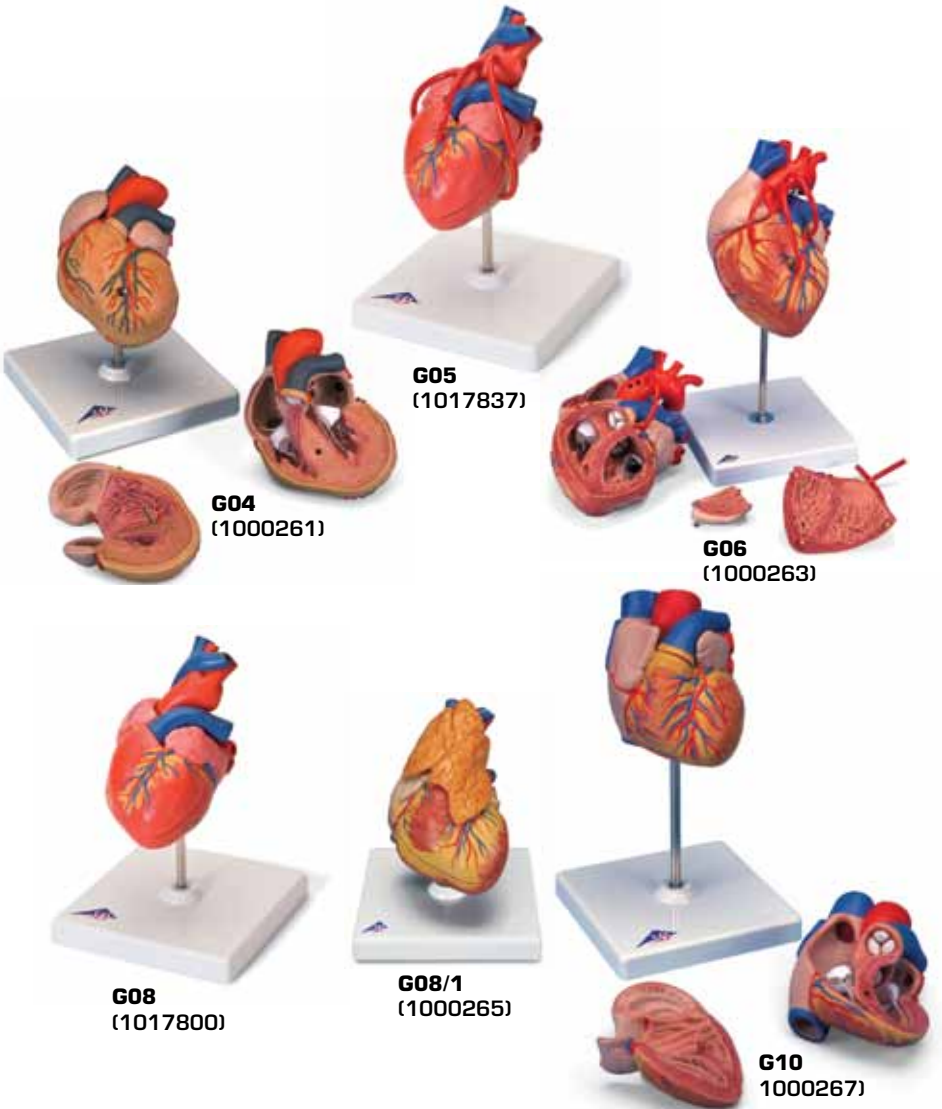




...going one step further



# G04, G05, G06, G08, G08/1, G10

(1000261, 1017837, 1000263, 1017800, 1000265, 1000267)

## G04

- 1 V. cava superior
- 2 Aorta, arcus
- 3 Truncus pulmonalis
- 4 Truncus pulmonalis, valvula semilunaris sinistra
- 5 Atrium sinistrum
- 6 Valva atrioventricularis sinistra (Valva mitralis)
- 7 Ventriculus sinister
- 8 Mm. papillares
- 9 Septum interventriculare, pars muscularis
- 10 Ventriculus dexter
- 11 Valva atrioventricularis dextra (Valva tricuspidalis)
- 12 Atrium dextrum
- 13 Septum interventriculare, pars membranacea
- 14 Septum interventriculare, pars muscularis
- 15 A. pulmonalis sinistra
- 16 Auricula sinistra
- 17 V. coronaria sinistra
- 18 A. coronaria sinistra, R. circumflexus
- 19 A. coronaria sinistra, ramus interventricularis anterior
- 20 Sulcus interventricularis anterior
- 21 V. interventricularis anterior
- 22 Cor, apex
- 23 A. coronaria dextra
- 24 Auricula dextra
- 25 Aorta, arcus
- 26 V. cava superior
- 27 V. azygos
- 28 A. pulmonalis dextra
- 29 V. pulmonalis dextra superior
- 30 V. pulmonalis dextra inferior
- 31 V. cava inferior
- 32 V. interventricularis posterior
- 33 Sulcus interventricularis posterior
- 34 Sinus coronarius
- 35 V. pulmonalis sinistra inferior
- 36 V. pulmonalis sinistra superior
- 37 A. pulmonalis sinistra

## G08

- 1 V. brachiocephalica dextra
- 2 Truncus brachiocephalicus
- 3 V. brachiocephalica sinistra
- 4 A. carotis communis sinistra
- 5 Aorta, pars ascendens
- 6 A. pulmonalis sinistra
- 7 V. pulmonalis sinistra
- 8 Atrium sinistrum
- 9 Valva atrioventricularis sinistra (Valva mitralis)
- 10 Ventriculus sinister
- 11 Septum interventriculare, pars muscularis
- 12 Ventriculus dexter
- 13 Valva atrioventricularis dextra (Valva tricuspidalis)
- 14 Atrium dextrum
- 15 Truncus pulmonalis, valvula semilunaris sinistra
- 16 V. cava superior
- 17 Septum interventriculare, pars membranacea
- 18 Septum interventriculare, pars muscularis
- 19 Aorta, arcus
- 20 Auricula sinistra
- 21 V. interventricularis anterior
- 22 A. coronaria sinistra, ramus interventricularis anterior
- 23 Cor, apex
- 24 A. coronaria dextra
- 25 Auricula dextra
- 26 Truncus pulmonalis
- 27 V. brachiocephalica sinistra
- 28 Truncus brachiocephalicus
- 29 V. brachiocephalica dextra
- 30 V. azygos
- 31 A. pulmonalis dextra
- 32 V. pulmonalis dextra superior
- 33 V. pulmonalis dextra inferior
- 34 V. cava inferior
- 35 Sinus coronarius
- 36 V. pulmonalis sinistra inferior
- 37 V. pulmonalis sinistra superior
- 38 A. pulmonalis sinistra
- 39 Aorta, arcus
- 40 A. carotis communis sinistra

## **Latin**

### **G05**

- 1 Bypass A. coronaria dextra
- 2 Bypass A. coronaria sinistra, ramus interventricularis anterior
- 3 Bypass A. coronaria sinistra, ramus circumflexus

### **G08/1**

- 1 Thymus

### **G10**

- 1 Septum interatriale, fossa ovalis
- 2 Truncus pulmonalis, valvula semilunaris sinistra
- 3 Atrium sinistrum
- 4 Valva atrioventricularis sinistra (Valva mitralis)
- 5 Valva aortae, valvula semilunaris sinistra
- 6 Ventriculus sinister
- 7 Septum interventriculare, pars muscularis
- 8 Ventriculus dexter
- 9 Valva atrioventricularis dextra (Valva tricuspidalis)
- 10 Atrium dextrum
- 11 A. pulmonalis dextra
- 12 Septum interventriculare, pars membranacea
- 13 Cor, apex
- 14 V. cava superior
- 15 Aorta, pars ascendens
- 16 A. pulmonalis sinistra
- 17 Truncus pulmonalis
- 18 Auricula sinistra
- 19 Sulcus interventricularis anterior
- 20 A. coronaria sinistra, ramus interventricularis anterior
- 21 V. interventricularis anterior
- 22 Cor, apex
- 23 A. coronaria dextra
- 24 Auricula dextra
- 25 Aorta, pars ascendens
- 26 V. cava superior
- 27 A. pulmonalis dextra
- 28 V. pulmonalis dextra superior
- 29 V. pulmonalis dextra inferior
- 30 V. cava inferior

- 31 V. interventricularis posterior
- 32 Sinus coronarius
- 33 A. coronaria sinistra, ramus circumflexus
- 34 V. coronaria sinistra
- 35 V. pulmonalis sinistra inferior
- 36 V. pulmonalis sinistra superior
- 37 A. pulmonalis sinistra

# Heart Models

English

## G04

### Heart with Left Ventricular Hypertrophy (LVH),

#### 2-part

- 1 Superior vena cava
- 2 Aortic arch
- 3 Pulmonary trunk
- 4 Left semilunar cusp of pulmonary trunc
- 5 Left atrium
- 6 Mitral valve (left av-valve)
- 7 Left ventricle
- 8 Papillary muscles
- 9 Muscular part of interventricular septum
- 10 Right ventricle
- 11 Tricuspid valve (right av-valve)
- 12 Right atrium
- 13 Membranous part of interventricular septum
- 14 Muscular part of interventricular septum
- 15 Left pulmonary artery
- 16 Left auricle
- 17 Left coronary vein
- 18 Circumflex branch of left coronary artery
- 19 Anterior interventricular branch of left coronary artery
- 20 Anterior interventricular sulcus
- 21 Anterior interventricular vein
- 22 Apex of heart
- 23 Right coronary artery of heart
- 24 Right auricle
- 25 Aortic arch
- 26 Superior vena cava
- 27 Azygos vein
- 28 Right pulmonary artery
- 29 Superior right pulmonary vein
- 30 Inferior right pulmonary vein
- 31 Inferior vena cava
- 32 Posterior interventricular vein
- 33 Posterior interventricular sulcus
- 34 Coronary sinus
- 35 Inferior left pulmonary vein
- 36 Superior left pulmonary vein
- 37 Left pulmonary artery

## G08

### Heart, 2-part

- 1 Right brachiocephalic vein
- 2 Brachiocephalic trunk
- 3 Left brachiocephalic vein
- 4 Left common carotid artery
- 5 Ascending aorta
- 6 Left pulmonary artery
- 7 Left pulmonary vein
- 8 Left atrium
- 9 Mitral valve (left av-valve)
- 10 Left ventricle
- 11 Muscular part of interventricular septum
- 12 Right ventricle
- 13 Tricuspid valve (right av-valve)
- 14 Right atrium
- 15 Left semilunar cusp of pulmonary trunc
- 16 Superior vena cava
- 17 Membranous part of interventricular septum
- 18 Muscular part of interventricular septum
- 19 Aortic arch
- 20 Left auricle
- 21 Anterior interventricular vein
- 22 Anterior interventricular branch of left coronary artery
- 23 Apex of heart
- 24 Right coronary artery of heart
- 25 Right auricle
- 26 Pulmonary trunk
- 27 Left brachiocephalic vein
- 28 Brachiocephalic trunk
- 29 Right brachiocephalic vein
- 30 Azygos vein
- 31 Right pulmonary artery
- 32 Superior right pulmonary vein
- 33 Inferior right pulmonary vein
- 34 Inferior vena cava
- 35 Coronary sinus
- 36 Inferior left pulmonary vein
- 37 Superior left pulmonary vein
- 38 Left pulmonary artery
- 39 Aortic arch
- 40 Left common carotid artery

## G05

### Heart with Bypass, 2-part

Basic structures as model G08. Additionally represented:

- 1 Bypass to the right coronary artery of heart
- 2 Bypass to the anterior interventricular branch of left coronary artery
- 3 Bypass to the circumflex branch of left coronary artery

- 27 Right pulmonary artery
- 28 Superior right pulmonary vein
- 29 Inferior right pulmonary vein
- 30 Inferior vena cava
- 31 Posterior interventricular vein
- 32 Coronary sinus
- 33 Circumflex branch of left coronary artery
- 34 Left coronary vein
- 35 Inferior left pulmonary vein
- 36 Superior left pulmonary vein
- 37 Left pulmonary artery

## G08/1

### Heart with Thymus, 3-part

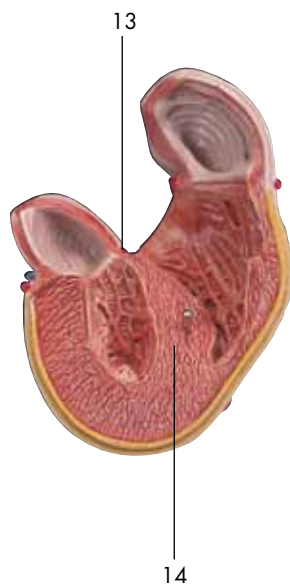
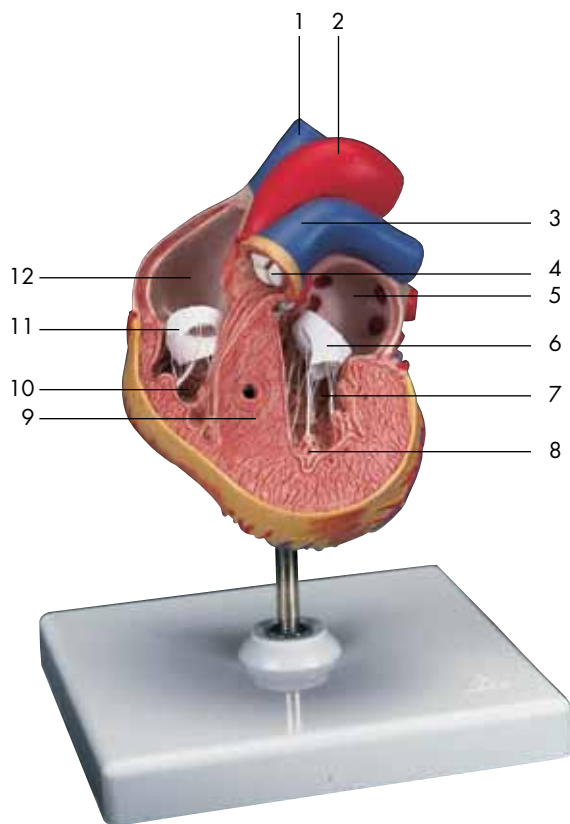
Basic structures as model G08. Additionally represented:

- 1 Thymus gland

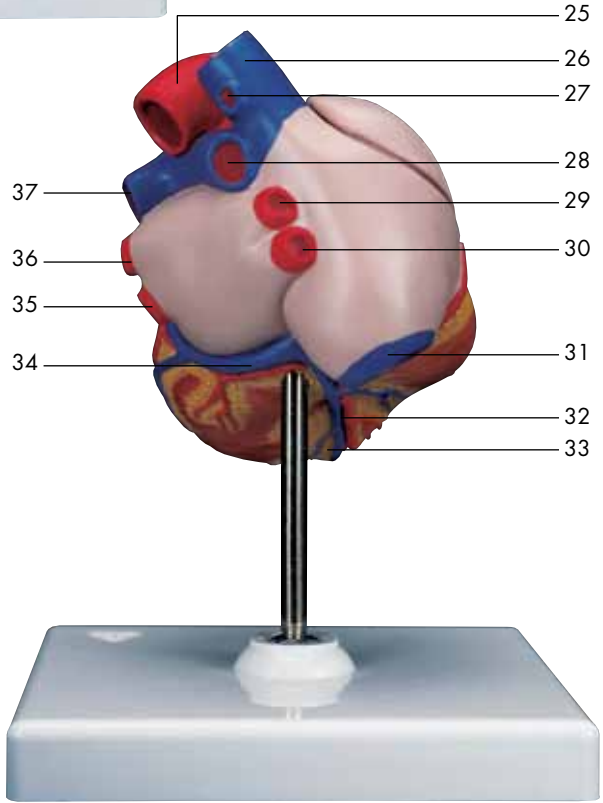
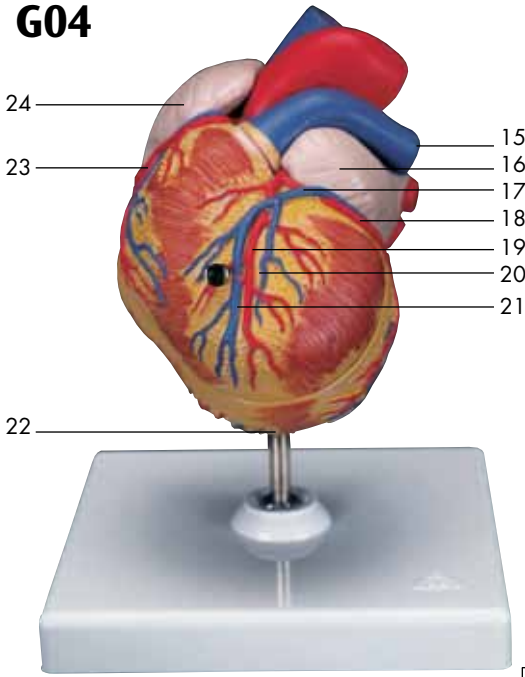
## G10

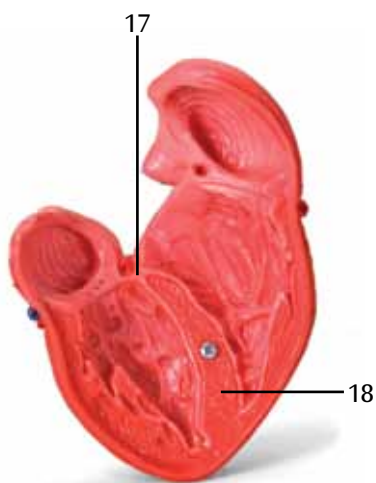
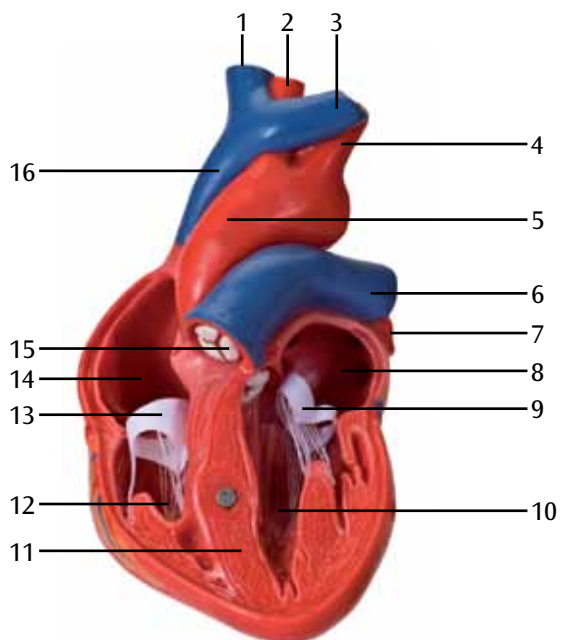
### Heart, 2-part

- 1 Oval fossa of heart
- 2 Left semilunar cusp of pulmonary trunk
- 3 Left atrium
- 4 Mitral valve (left av-valve)
- 5 Left semilunar cusp of aortic valve
- 6 Left ventricle
- 7 Muscular part of interventricular septum
- 8 Right ventricle
- 9 Tricuspid valve (right av-valve)
- 10 Right atrium
- 11 Right pulmonary artery
- 12 Membranous part of interventricular septum
- 13 Apex of heart
- 14 Superior vena cava
- 15 Ascending aorta
- 16 Left pulmonary artery
- 17 Pulmonary trunk
- 18 Left auricle
- 19 Anterior interventricular sulcus
- 20 Anterior interventricular branch of left coronary artery
- 21 Anterior interventricular vein
- 22 Apex of heart
- 23 Right coronary artery of heart
- 24 Right auricle
- 25 Ascending aorta
- 26 Superior vena cava



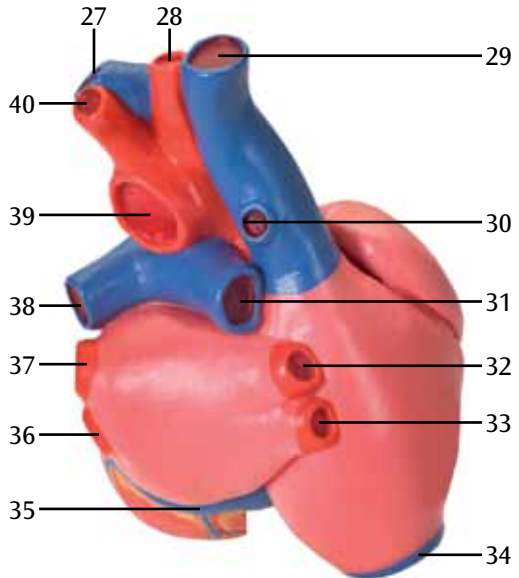
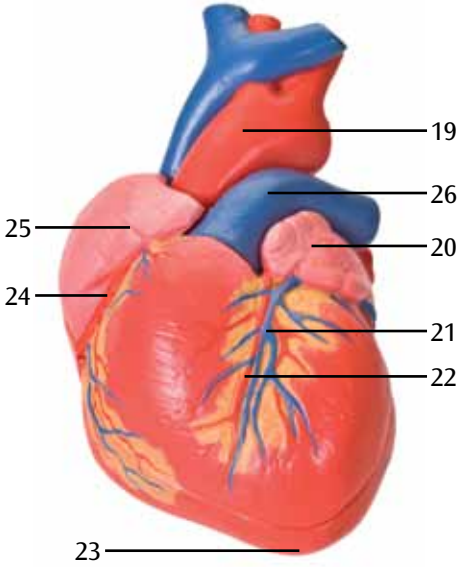
# G04



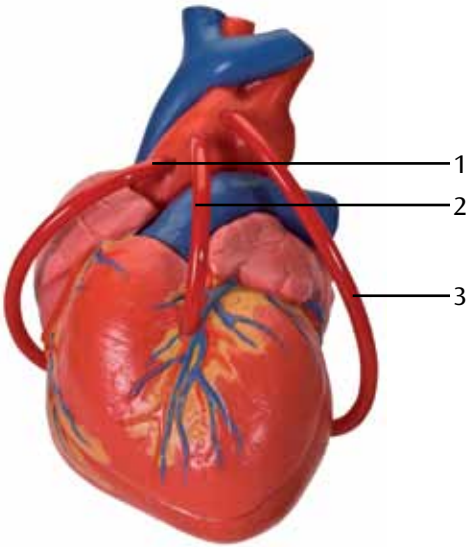




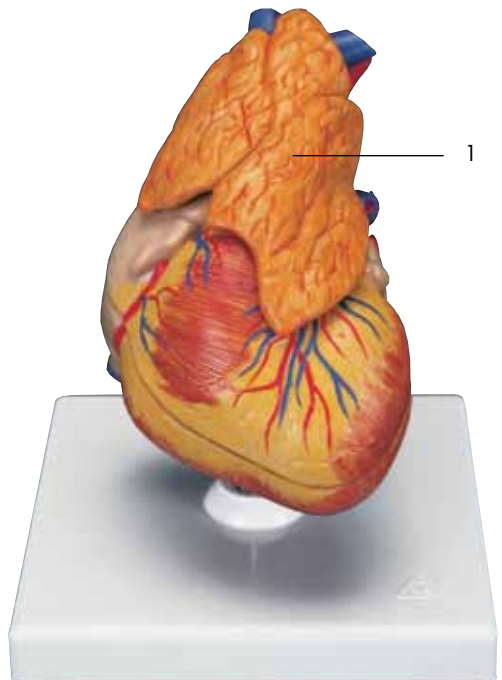
# G08



**G05**



**G08/1**



# G10

