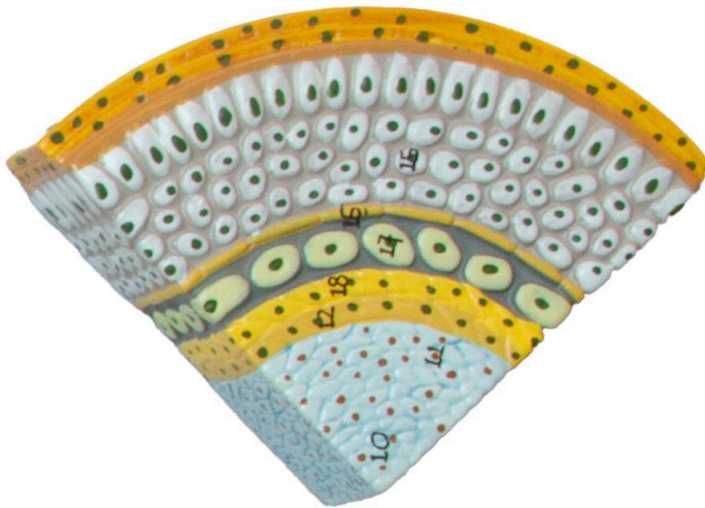
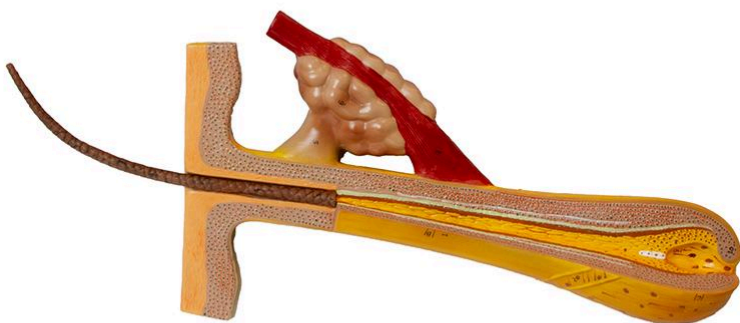
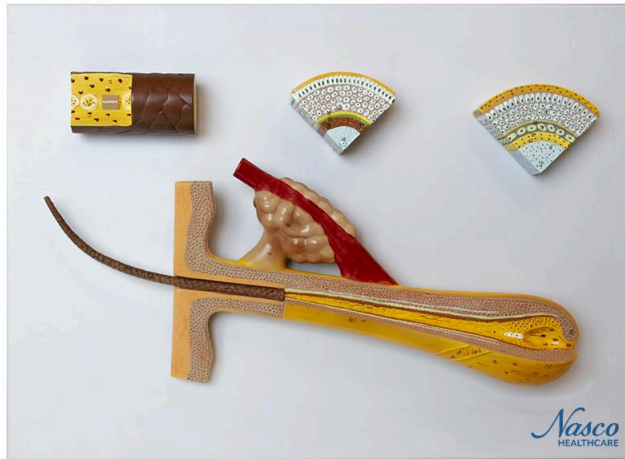


**MG21278 | FOLLICULUM 100 TIMES
ENLARGED**







Anatomical model presenting a 100x enlarged longitudinal section of the hair root, along with three enlarged cross-sections of the hair shaft, root, and bulb. Coloring facilitates the identification of layers, such as the outer and inner root sheath, cuticle, and cortex. The model is mounted on a durable base.

Applications:

Ideal for the detailed study of hair structure, from root to shaft. Used in courses on dermatology, trichology, aesthetics, and health areas related to hair and scalp. A tool to support learning and comparative analysis of hair structure.

Technical Differentiators:

- * Detailed representation of hair structures.
- * Distinct colors for easy layer identification.
- * Durable polymer base for greater stability.

3D Technology and Augmented Reality:

Our anatomical models offer an innovative visual complement through information cards that activate 3D models viewable in augmented reality (A.R.). This exclusive interactive platform stimulates learning, allowing comparative analysis of anatomical structures and offering opportunities for continuing education in anatomy, physiology, and pathophysiology.



Technical Specifications:

* Scale: 100x enlarged (longitudinal section of the root).

* Material: Resin, durable polymer (base).

Main Structures:

Outer root sheath: Outermost layer that surrounds the hair root, composed of epithelial cells that connect to the skin's epidermis. Provides support and protection as the hair grows through the dermis.

Cross-section of the area around the hair bulb: Displays the structure of the hair bulb, the base of the hair follicle where cell division and hair growth occur. Allows visualization of the dermal papilla and hair matrix, essential for hair formation.

Connective tissue sheath: Layer of connective tissue that surrounds the hair follicle, providing structural support and nutrition. Contains blood vessels and nerves that irrigate and innervate the follicle.

Hyaline membrane: Acellular, glassy layer located between the outer root sheath and the connective tissue sheath of the hair follicle. Acts as a barrier and interface between these two structures.

Inner root sheath: Henle's layer: Outermost layer of the inner root sheath, composed of elongated and keratinized cells. Aids in the formation and support of the developing hair shaft.

Inner root sheath: Huxley's layer: Intermediate layer of the inner root sheath, composed of lighter and larger cells than those in Henle's layer. Plays a role in the keratinization of the hair shaft.

Inner root sheath: cuticle: Innermost layer of the inner root sheath, composed of cells that interlock with the cells of the hair cuticle. Facilitates the upward movement of the hair shaft through the follicle.

Hair cuticle: Outermost layer of the hair shaft, composed of overlapping cells like scales. Protects the hair cortex and influences shine and texture.

Hair cortex: Intermediate layer of the hair shaft, composed of keratin fibers that determine the strength, elasticity, and color of the hair. Contains melanin, the pigment that gives color to the hair.

Hair matrix: Region of rapidly dividing cells in the hair bulb that form the cells of the hair



shaft. Receives nutrients from the dermal papilla and is essential for hair growth.

Other structures can be verified directly on the physical piece or in the interactive 3D model.

Customizable Skin Tones:

This anatomical model offers the option of choosing between three skin tones to better represent human diversity and meet different educational and clinical needs. It is possible to choose between light skin, intermediate tone, and dark skin, providing greater realism and inclusion during training and demonstrations.

About Anatomical Models:

They are developed with resin replication technology, addressing the scarcity of natural anatomical pieces for teaching and research. They present all the essential morphological characteristics with excellent cost-benefit ratio, resistance, manual painting, and numbering for precise identification of structures.

List of all visible structures:

- External root sheath
- Cross section of the area around the hair bulb
- Connective tissue sheath
- Hyaline membrane
- Inner root sheath: Henle's layer
- Inner root sheath: Huxley's layer
- Inner root sheath: cuticle
- Hair cuticle
- Hair shaft cortex
- Hair matrix
- Hyaline membrane
- Cross section of the hair root
- External root sheath
- Inner root sheath: cuticle
- Inner root sheath: Henle's layer
- Inner root sheath: Huxley's layer
- Hair cuticle
- Hair shaft cortex
- Medulla
- Hair cuticle
- Hair shaft cortex
- Medulla
- Melanin
- Hair matrix
- Hair papilla



- Cross section of the area around the hair bulb
- Hair bulb
- Connective tissue sheath
- Hyaline membrane
- Cross section of the hair root
- Arrector pili muscle
- Sebaceous gland
- Sebaceous gland duct
- Hair shaft section