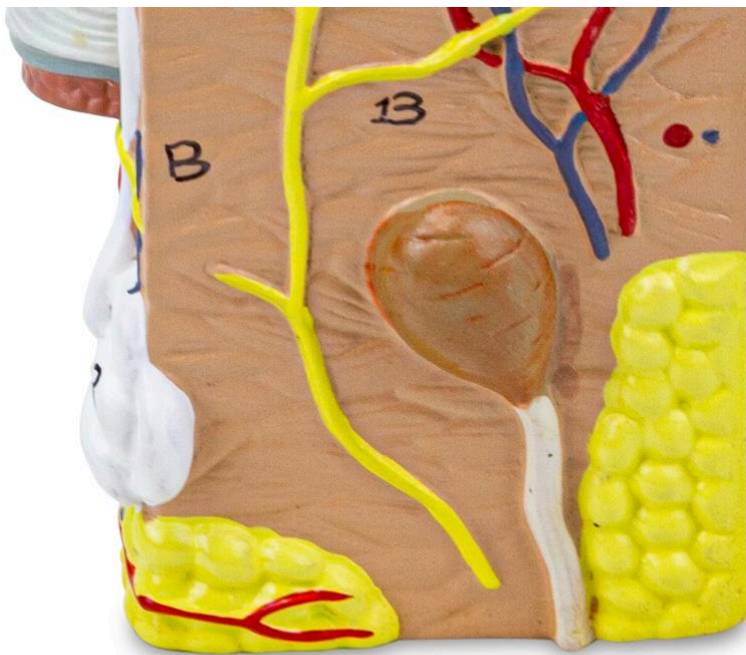
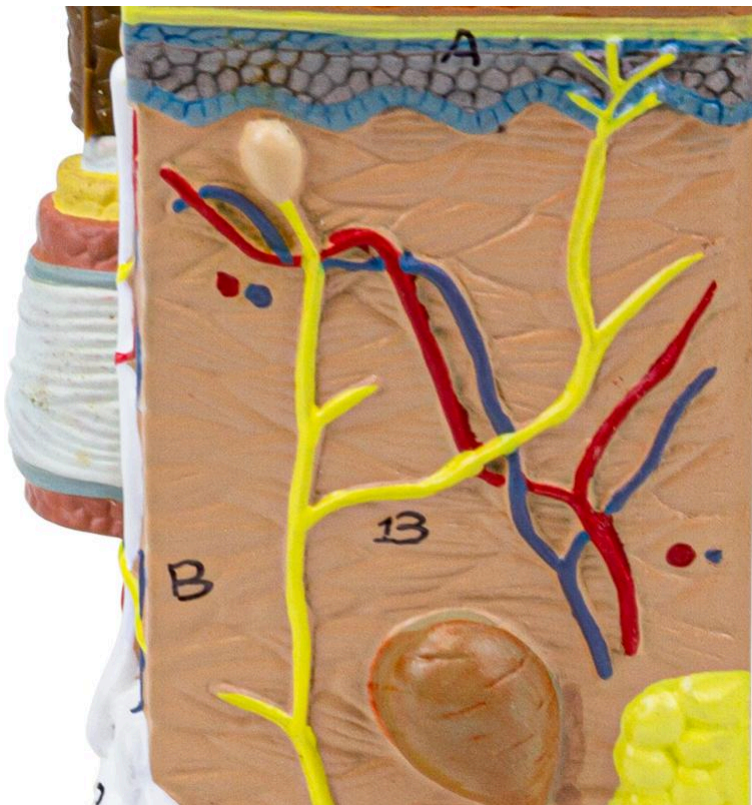
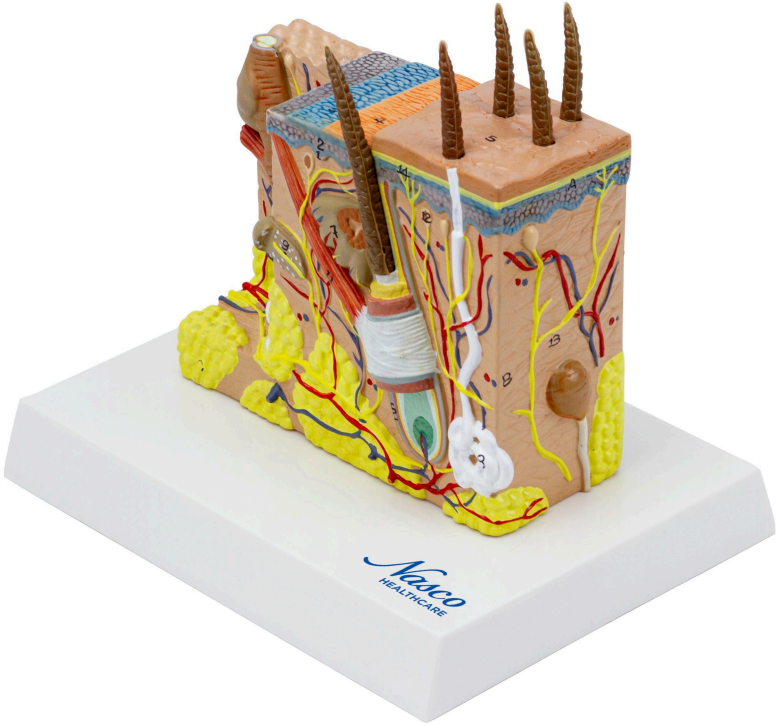


**MG21064 | HUMAN SKIN SECTION 2 PARTS, 35  
TIMES ENLARGED**





*Nasco*  
HEALTHCARE





Two-part, three-dimensional model representing the structure of human skin, allowing for easy identification of its layers and main structures, such as hair follicles, sensory corpuscles, and glands. Important anatomical structures are numbered and identified on an information card.

**Applications:**

Ideal for studying the anatomy and physiology of human skin, as well as for training healthcare professionals. Can be used in classrooms, laboratories, and medical offices.

**Technical Differentiators:**

- \* Detailed representation of skin layers and structures.
- \* Numbered anatomical structures for easy identification.
- \* Interactive 3D anatomical model with augmented reality for in-depth learning.
- \* Produced with long-lasting synthetic material.
- \* Comes with information card.

**3D Technology and Augmented Reality:**

Our anatomical models offer an innovative visual complement through information cards that activate 3D models viewable in augmented reality (AR). This exclusive interactive platform stimulates learning, allowing for comparative analysis of anatomical structures and offering opportunities for continuing education in anatomy, physiology, and pathophysiology.



**Technical Specifications:**

- \* Material: Synthetic material.
- \* Two-part model.
- \* Numbered structures.

**Main Structures:**

**Epidermis:** The outermost layer of the skin, mainly composed of keratinocytes. It acts as a protective barrier against the external environment, preventing water loss and the entry of pathogens.

**Hypodermis:** Also known as subcutaneous tissue, it is the deepest layer of the skin. It is rich in adipose tissue, which acts as thermal insulation and energy reserve, in addition to protecting internal organs against impacts.

**Dermis:** Located between the epidermis and hypodermis, it is the intermediate layer of the skin. It contains blood vessels, nerves, hair follicles, sweat and sebaceous glands, as well as collagen and elastin fibers that give the skin elasticity and resistance.

**Sweat gland:** Responsible for producing sweat, which helps regulate body temperature through evaporation. There are two main types: eccrine, which are present throughout the body, and apocrine, which are mainly found in the armpits and genital area.

**Tactile corpuscle:** Also known as Meissner's corpuscle, it is a sensory receptor located in the papillary dermis, especially abundant in the fingertips, lips, and other areas sensitive to light touch.

**Free nerve endings:** Sensory receptors that extend to the epidermis and are responsible for detecting pain, temperature, and itching. They are found in almost all tissues of the body.

**Hair shaft:** The visible part of the hair that projects out of the skin. It is mainly composed of keratin and has a complex structure with distinct layers.

**Sebaceous gland:** Exocrine glands located in the dermis, usually associated with hair follicles. They secrete sebum, an oily substance that lubricates the skin and hair, protecting them against dryness.

**Arrector pili muscle:** Small smooth muscle attached to the hair follicle. Its contraction causes the hair to stand on end, known as "goosebumps," in response to cold or fear.

**Hair follicle:** Tubular structure in the dermis where hair is produced. It is composed of several layers and has a dermal papilla at the base, which provides nutrients for hair growth.



Other structures can be verified directly on the physical piece or in the interactive 3D model.

**Customizable Skin Tones:**

This anatomical model offers the option of choosing between three skin tones to better represent human diversity and meet different educational and clinical needs. It is possible to choose between light skin, intermediate tone, and dark skin, providing greater realism and inclusion during training and demonstrations.

**About Anatomical Models:**

They are developed with resin replication technology, addressing the scarcity of natural anatomical pieces for teaching and research. They present all the essential morphological characteristics with excellent cost-benefit, resistance, manual painting, and numbering for precise identification of structures.

**List of all visible structures:**

- Epidermis
- Hypodermis
- Dermis
- Sweat gland
- Tactile corpuscle
- Free nerve endings
- Hair shaft
- Stratum spinosum
- Stratum basale
- Sebaceous gland
- Arrector pili muscle
- Hair follicle
- Lamellar corpuscle
- Stratum corneum
- Stratum lucidum
- Stratum granulosum
- Subcutaneous tissue