

Name: _____

Phone: _____

School/Organization: _____

E-mail: _____

Dealer/Rep: _____

Sales Rep: _____ Quote: _____

STOR-EDGE™ MULTI-PURPOSE CARTS

STANDARD FEATURES:

- Available in wood or laminate finishes
- Full extension glides on all drawers
- Black wire pull handles
- 110° Euro hinges on doors
- Weight racks and j-hooks provided where applicable
- 4" Heavy duty casters
- Cabinets ship fully assembled, except for casters



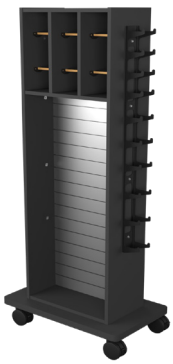
SR-005 (Front)



SR-009 (Front)

CART CONFIGURATIONS:

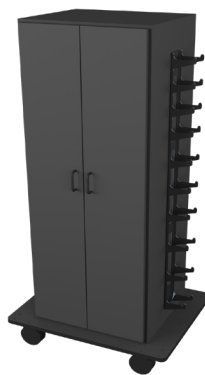
SR-001 (Front)



SR-001 (Back)



SR-002 (Front)



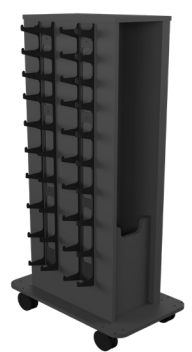
SR-002 (Back)



SR-003 (Front)



SR-003 (Back)



SR-001

30"W x 18"D x 72"H

Front: slatwall & band dispensers

Back: slatwall

Sides: weight racks, (9) 4" double hooks, & (10) j-hooks

QTY: _____



SR-002

30"W x 24"D x 61"H

Front: doors with (3) shelves

Back: slatwall

Sides: weight racks, (4) 4" double hooks, & (10) j-hooks

QTY: _____



SR-003

30"W x 18"D x 60"H

Front: slatwall

Back: weight racks

Right side: band dispensers

Left side: storage compartment, (4) 4" double hooks, & (10) j-hooks

QTY: _____

OPTIONS:



SR-WK1 - Weight Kit 1

(2) 1-10lbs dumbbell sets

(1) 16pc hugger weight set

(1) Theraband band set

QTY: _____



SR-MI-001 - Mirror

19.75"W x 65.5"H (back side)

QTY: _____

OPTIONS:



SR-WK2 - Weight Kit 2

(2) 1-10lbs dumbbell sets

(1) 16pc hugger weight set

QTY: _____



TSFO-FHLD

Flush mount handles on large doors

QTY: _____

OPTIONS:



SR-WK3 - Weight Kit 3

(2) 1-10lbs dumbbell sets

(1) 16pc hugger weight set

(1) Theraband band set

(1) 1-3lbs weight bar set

QTY: _____



Name: _____

Phone: _____

School/Organization: _____

E-mail: _____

Dealer/Rep: _____

Sales Rep: _____ Quote: _____

STOR-EDGE™ MULTI-PURPOSE CARTS

SR-004 (Front)



SR-004 (Back)



- SR-004**
24"W x 24"D x 61"H
Front: band dispensers
Back: slatwall
Sides: weight racks, (3) 4" double hooks, & (6) j-hooks
QTY: _____

SR-005 (Front)



- SR-005**
32"W x 32"D x 72"H
Front: cubbies, drop down desk with key lock, (3) 8" drawers
Back: band dispensers & slatwall
Right side: mirror
Left side: weight racks, (4) 4" double hooks, & (12) j-hooks
QTY: _____

OPTIONS:

- SR-WK3 - Weight Kit 3**
(2) 1-10lbs dumbbell sets
(1) 16pc hugger weight set
(1) Theraband band set
(1) 1-3lbs weight bar set
QTY: _____

- TSFO-FHLD**
Flush mount handles on large doors
QTY: _____

SR-006 (Front)



SR-006 (Back)



- SR-006**
36"W x 36"D x 73"H
Front: doors with (2) shelves & (2) 10" drawers
Back: weight racks
Sides: slat wall, (4) 4" double hooks, & (12) j-hooks
QTY: _____

**Only available in solid wood and with flush mount handles.

OPTIONS:

- SR-WK3 - Weight Kit 3**
(2) 1-10lbs dumbbell sets
(1) 16pc hugger weight set
(1) Theraband band set
(1) 1-3lbs weight bar set
QTY: _____

SR-008 (Front)



SR-008 (Back)



- SR-008**
46"W x 26"D x 43"H
Front: (5) 18"W drawers & (1) 18"W door
Back: slatwall
Right side: storage compartment, (4) 4" double hooks, & (12) j-hooks
Left side: weight racks
QTY: _____

OPTIONS:

- TSFO-FHD**
Flush mount handles on doors
QTY: _____
- TSFO-FHDR**
Flush mount handles on drawers
QTY: _____

SR-009 (Front with flush mount handles)



SR-009 (Back)



- SR-009**
36"W x 36"D x 73"H
Front: doors with (2) shelves & (2) 10" drawers
Back: weight racks
Sides: slat wall, (4) 4" double hooks, & (10) j-hooks
QTY: _____

OPTIONS:

- SR-WK3 - Weight Kit 3**
(2) 1-10lbs dumbbell sets
(1) 16pc hugger weight set
(1) Theraband band set
(1) 1-3lbs weight bar set
QTY: _____

- SR-MI-009 - Mirror**
26.5"W x 65.5"H (back side)
QTY: _____

- TSFO-FHDR**
Flush mount handles on drawers
QTY: _____

- TSFO-FHLD**
Flush mount handles on large doors
QTY: _____

SR-010 (Front)



- SR-010**
72"W x 25.5"D x 33"H
Front: (2) sliding doors
Back & sides: solid
QTY: _____

OPTIONS:

- TSFO-FHD**
Flush mount handles on doors
QTY: _____



Name: _____

Phone: _____

School/Organization: _____

E-mail: _____

Dealer/Rep: _____

Sales Rep: _____ Quote: _____

STOR-EDGE™ MULTI-PURPOSE CARTS

SR-011 (Front)



SR-012 (Front)



SR-013 (Front)



- SR-011**
50"W x 24"D x 65"H
(4) Cubbies
(4) Double hooks in each compartment
(2) Drawers
(4) 4" Casters
QTY: _____

- OPTIONS:**
- TSFO-FHDR**
Flush mount handles on drawers
QTY: _____

- SR-012**
48"W x 20"D x 64"H
(4) Cubbies
(4) Double hooks in each compartment
(2) Drawers
4" Toe-kick
QTY: _____

- OPTIONS:**
- TSFO-FHDR**
Flush mount handles on drawers
QTY: _____

- SR-013**
26"W x 24"D x 65"H
(2) Cubbies
(4) Double hooks in each compartment
(1) Drawer
(4) 4" Casters
QTY: _____

- OPTIONS:**
- TSFO-FHDR**
Flush mount handles on drawers
QTY: _____

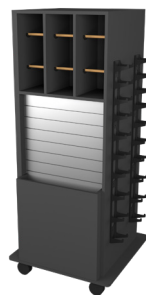
SR-014 (Front)



SR-016 (Front)



SR-016 (Back)



- SR-014**
24"W x 20"D x 64"H
(2) Cubbies
(4) Double hooks in each compartment
(1) Drawer
4" Toe-kick
QTY: _____

- OPTIONS:**
- TSFO-FHDR**
Flush mount handles on drawers
QTY: _____

- SR-016**
32"W x 32"D x 72"H
Front: cubbies, (4) 8" drawers
Back: band dispensers, slatwall, & bar box storage compartment
Right side: slatwall
Left side: weight racks
QTY: _____

- OPTIONS:**
- SR-WK3 - Weight Kit 3**
(2) 1-10lbs dumbbell sets
(1) 16pc hugger weight set
(1) Theraband band set
(1) 1-3lbs weight bar set
QTY: _____
 - TSFO-FHDR**
Flush mount handles on drawers
QTY: _____

Name: _____

Phone: _____

School/Organization: _____

E-mail: _____

Dealer/Rep: _____

Sales Rep: _____ Quote: _____

OPTIONS:

STANDARD LAMINATE CHOICES:

- | | | | | | |
|-----------------------|---|---------------|-----------------------|---|--------------|
| <input type="radio"/> |  | Oak | <input type="radio"/> |  | Grey |
| <input type="radio"/> |  | Maple | <input type="radio"/> |  | Storm Grey |
| <input type="radio"/> |  | Cherry Merlot | <input type="radio"/> |  | Harbor Grain |
| <input type="radio"/> |  | Espresso | <input type="radio"/> |  | Black |