

Trio™ Computing Workstations



Meet Trio.

Your partner in patient care.

Trio Workstations are designed for simple use with thoughtful tools built-in to improve workflow, save time, and support an efficient clinical process. Choose from full-featured to non-powered workstations, configurable just the way you need it.





HEALTHCARE

Superior ease of use, flexibility, and performance.

PERSONAL ERGONOMICS

- ▶ Simple ergonomic adjustments of the work surface, keyboard, and monitor allow users to position for ideal comfort

MANEUVERABILITY

- ▶ A slim workstation profile, lightweight design, and N-Stride steer assist makes every step easier

POWER

- ▶ GoLife™ scalable power system to match your run-time requirements and provide workflow options

CONVENIENCE

- ▶ Smart accessories coupled with a range of supplies storage options streamline common workflows

SUPPORT

- ▶ We are here to support you 24/7. Capsa's technical support teams will partner with you to ensure maximum uptime

Elevating performance,

every day.

- ▼ *Capsa Healthcare has been a market leader for over 50 years through inventive product design and commitment to customer support.*

A Trio For Every Workflow

Workflow efficiency. Medication management. Organized storage.

Trio provides a versatile, ergonomically engineered workstation designed to streamline tasks and support smoother, more efficient clinical workflows.



Trio NP

- ▶ A non-powered workstation, supports simple care applications or workflows that do not require continuous power.



Trio

- ▶ Smart, ergonomically designed workstation with easy to use touchscreen control center, steering assist, and a scalable, reliable power system.



Trio LT

- ▶ A powered computing workstation that offers all the essential features and proven power flexibility you want in a modern workstation.

Workflows Simplified

Capsa Healthcare elevates “no-hassle” functionality with the Trio workstation. Its intuitive design, built-in workflow tools, and ergonomic features make it easy to use while helping clinical teams save time and maintain an efficient, organized process.



For IT Team

NO HASSLE PERFORMANCE

- ▶ Trio helps reduce user friction and provides the dependable performance IT teams expect from a standardized platform.

FLEET MANAGEMENT

- ▶ N-Sight Fleet Management software improves asset utilization, maximizes workstation performance, and identifies issues before they interrupt workflow.

STANDARDIZATION

- ▶ Trio’s adaptability allows it to serve as a unified platform across diverse workstation use cases within your facility.

TRUSTED SUPPORT

- ▶ Trio is easy to service for routine maintenance, backed by Capsa’s long-standing commitment to responsive support.

For Nursing Team

SIMPLE TO USE

- ▶ An intuitive control center with touch-screen navigation offers quick access to tools and customizable presets to support individual user comfort.

MAXIMUM UPTIME

- ▶ Extended power options help ensure uninterrupted workflow throughout the shift.

EASY TO MANEUVER

- ▶ Lightweight design, premium casters, and the standard N-Stride steer-assist feature make Trio effortless to move and position.

CONFIGURABLE

- ▶ Trio adapts to a wide range of workflow needs, including documentation, medication management and other essential clinical tasks.

Made to Move



▼ Trio™ moves with you.

Designed with ergonomics, weight, and profile in mind, the Trio platform delivers an intuitive, satisfying user experience that fits seamlessly into fast-paced clinical workflows. Its balanced design sets a new standard for smooth, effortless maneuverability.



Simple maneuverability

PERSONAL ERGONOMICS

- ▶ Adjustable features allow each user to customize the workstation for comfort, including height settings and personalized “memory” presets that follow the user to any cart they log into.

N-STRIDE™ STEER ASSIST

- ▶ N-Stride reduces physical strain by providing steering assistance, simply engage the handle trigger for smoother movement through hallways and tight spaces.

WORKSTATION AGILITY

- ▶ A slimmer profile and reduced overall weight deliver a new level of mobility, making Trio easier to navigate and reposition.



Powered to Perform



▼ Trio™ powers you through your day.

The GoLife™ power platform is a flexible, hybrid system built on proven technology, offering multiple runtime options to match your facility's needs—from short-duration tasks to continuous, around-the-clock operation.

Flexible Power for Every Workflow

FLEXIBLE, SCALABLE POWER FOR EVERY WORKFLOW.

Trio offers a range of power options built on safe, proven lithium iron phosphate technology, giving your facility the flexibility to match runtime requirements of any workload.

The GoLiFe™ power system provides three standalone in-base capacities—20, 40, or 50 amp hours—and can be paired with the GoLiFe external battery for extended runtimes of over 30 hours.

- ▶ **20 Ah in-base power** — Ideal for lightweight, light-duty use; delivers up to 8 hours of runtime at a 30-watt average load.
- ▶ **40 Ah in-base power** — A balanced option for medium-duty applications; provides 15.5 hours of runtime at a 30-watt average load.
- ▶ **50 Ah in-base power** — Designed for higher-capacity and long-duration needs offers nearly 20 hours of runtime at a 30-watt average load.
- ▶ **Add a 20 Ah GoLiFe external battery** — Expands any in-base configuration for additional capacity and supports continuous, 24/7 operation.



GoLiFe™ Swappable Battery



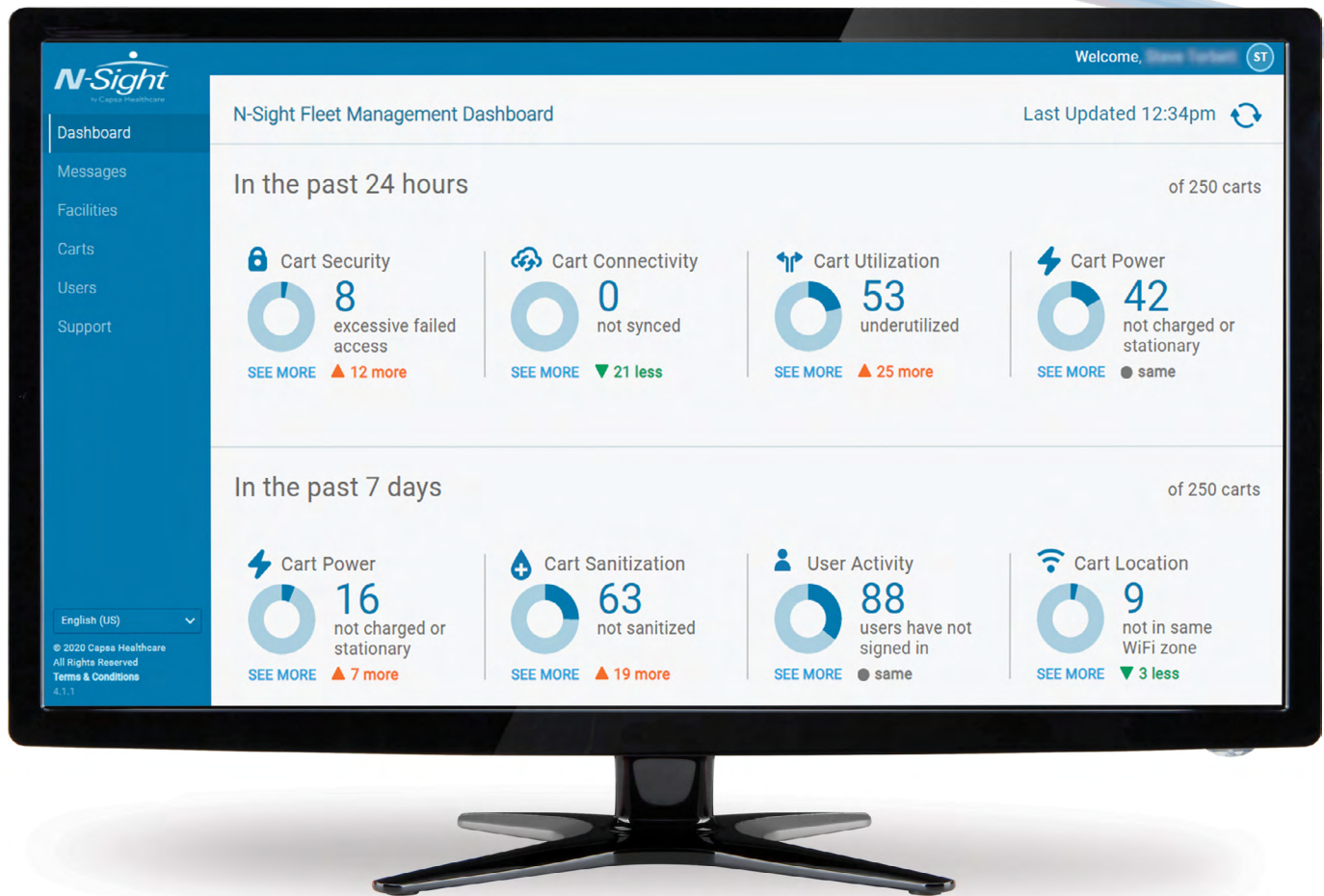
Optimize Your Fleet

POWER MONITORING

Stay ahead of power demands with N-Sight Fleet Management. This cloud-based platform gives Hospital IT full visibility into power usage and battery levels, allowing remote monitoring and streamlined management of every Trio workstation across the facility.

See pages 10 and 11 to learn more about N-Sight

Fleet Management



N-Sight™ gives you clear visibility into your fleet.

Built on a proven, stable foundation, the N-Sight Fleet Management platform provides the tools today's health IT teams need to reliably monitor and manage every Trio workstation across the facility.

Available with Trio full-featured configurations.

N-Sight™

N-Sight™ gives your facility clear, centralized oversight. Its cloud-based analytics support smarter fleet utilization and simplified user management, while intuitive tools help streamline everyday workflows for clinicians. With a dependable software architecture that enables remote management and maintenance, N-Sight™ helps maximize performance, extend fleet value, and minimize disruptions.

MAXIMIZE UPTIME AND AVAILABILITY

- ▶ Maintain workstation availability by proactively monitoring power levels and overall fleet performance. Built-in analytics provide visibility into power usage and help IT fine-tune settings to extend runtime.

RIGHT-SIZE FLEET

- ▶ Assess usage patterns and peak demand to ensure your fleet aligns with current operational needs. Identify opportunities to redeploy carts to higher-demand areas to optimize asset utilization.

REMOTE FLEET MANAGEMENT

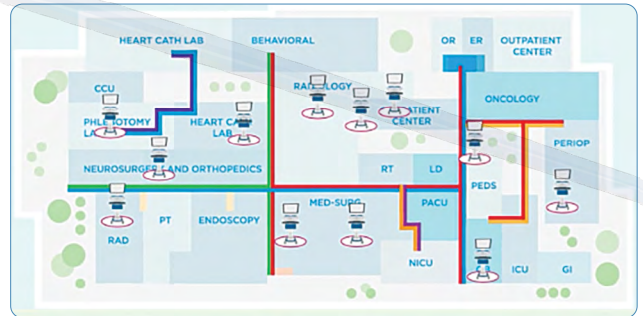
- ▶ N-Sight™ supports remote management of user groups, PIN codes, and permissions. A built-in cart locator helps save time by identifying a workstation's last known wireless access point.

CONFIGURATION SETTINGS

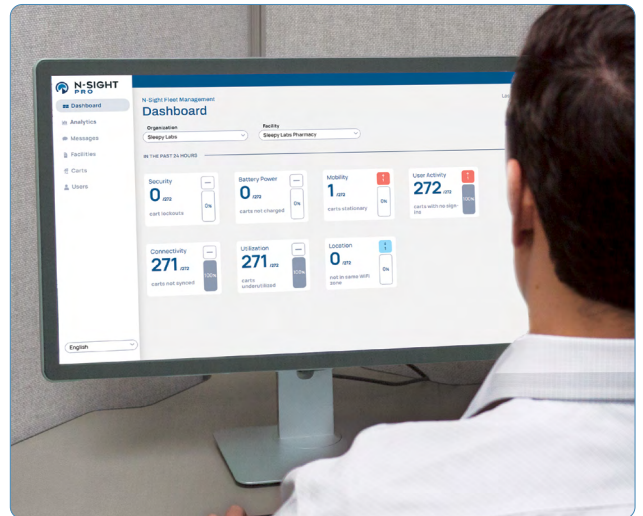
- ▶ Centrally manage Trio workstation settings—including displays, alerts, PINs, notifications, and service requests—to maintain consistency and simplify system oversight.



Optimize Your Fleet



Cart Locator



Proactive Monitoring



Flexible Storage



▼ Trio™ adapts to your workflow.

With support for both standard bins and the MaxBin™ system, Trio offers fully configurable storage options that can be tailored to specific application requirements. Its flexible storage design accommodates both straightforward and complex medication management workflows while meeting high security standards.

Storage options

MAXBIN™ STORAGE SYSTEM

The MaxBin system provides high-capacity storage in your choice of electronic locking or non-locking bins.

- ▶ Higher capacity, more flexible storage system
- ▶ 60-74% more capacity per row than standard bins
- ▶ Full width drawers with soft-close slides
- ▶ Dual locking option for controlled medications and witness authentication
- ▶ Remote security management

STANDARD BIN SYSTEM

Trio can be configured with a selection of standard drawers and bins, available in electronic locking or non-locking options. Mix and match components to align with your facility's workflow, storage, and security requirements. Bins are offered in gray or blue.

- ▶ Electric locking or non-locking drawers and bins
- ▶ Available in 2, 4 or 6 tier storage options
- ▶ Arrange your storage with a selection of bin and drawer configurations
- ▶ Available colors include gray or blue
- ▶ Remote security management

See Trio's storage options on Page 14 & 15



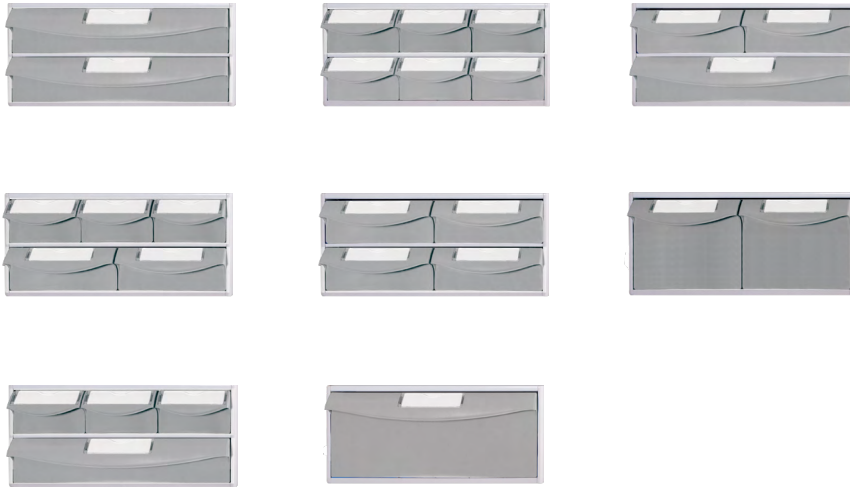
*Trio with
Standard Bin System*

Standard Bin System

Standard Bin Configurations

Configure the Trio workstation with standard drawer and bin options in your choice of electronic locking or non-locking to meet specific workflow, storage and security needs. Available in gray or blue.

Preconfigured Bin Modules



Standard Bin Dimensions



3.875" Small Bin
3.875" w x 2.375" h x 10.5" d
(9.84 x 6.03 x 26.67 cm)



6.375" Medium Bin
6.375" w x 2.375" h x 10.5" d
(16.19 x 6.03 x 26.67 cm)



12.75" Wide Bin
12.75" w x 2.375" h x 10.5" d
(32.38 x 6.03 x 26.67 cm)



6.375" Medium Deep Bin
6.375" w x 4.9375" h x 10.5" d
(16.19 x 12.54 x 26.67 cm)



12.75" Wide Deep Bin
12.75" w x 4.9375" h x 10.5" d
(32.38 x 12.54 x 26.67 cm)



Envelope Drawer available in blue only. Ask your Capsa Sales Manager for more information.

Trio with Standard Bins

MaxBin™ System

MaxBin High Capacity Configurations

The MaxBin system provides high-capacity storage in your choice of electronic locking or non-locking bins. The MaxBin's unique configurable design provides options for simple 1-tier designs up to expansive 5-tier designs.



Trio with MaxBin System

Sample Tier Configurations



MaxBin Dimensions



4" Small Bin
4" w x 2.66" h x 11.86" d
(10.16 x 6.75 x 30.12 cm)



5.5" Medium Bin
5.5" w x 2.66" h x 11.86" d
(13.97 x 6.75 x 30.12 cm)



8.6" Wide Bin
8.6" w x 2.66" h x 11.86" d
(21.59 x 6.75 x 30.12 cm)



16.6" Extra Wide Drawer
16.6" w x 2.66" h x 11.86" d
(42.16 x 6.75 x 30.12 cm)



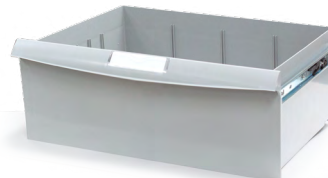
4" Small Deep Bin
4" w x 6.15" h x 11.86" d
(10.16 x 15.62 x 30.12 cm)



5.5" Medium Deep Bin
5.5" w x 6.15" h x 11.86" d
(13.97 x 15.62 x 30.12 cm)



8.6" Wide Deep Bin
8.6" w x 6.15" h x 11.86" d
(21.59 x 15.62 x 30.12 cm)



16.6" Extra Wide Deep Drawer
16.6" w x 6.15" h x 11.86" d
(42.16 x 15.62 x 30.12 cm)

Accessories

Customize Your Workstation

Choose from a selection of accessories to configure Trio for an array of care applications.



Wire Basket
Two Sizes



Access Pack
Multiple Sizes



Work Surface & Notification Light



Printer Shelf



Forked Scanner Holder



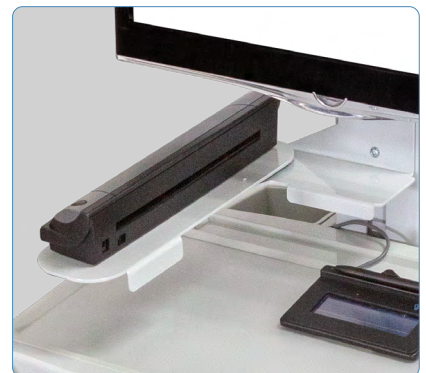
Tablet Mount
Multiple Options



Rear Slot Mount Scanner Holder



Sanitizing Wipes Bracket



Document Scanner Shelf

Specifications & Options



Specifications

Footprint*	16.53" W x 17.64" D
Starting weight (without battery)	95.8 lbs
Battery weights	5.6-14.4 lbs
Work surface height range	33.5"-49.5"
Keyboard height range	24.25"-43.25"
Monitor (center) height range	45"-66.5"
Primary work surface size	17" W x 10.5" D
Expanded work surface	10.875" W x 9.175" D
CPU cavity dimensions	17" W x 13.25" D x 3" H

* Expanded base size required for select storage configurations. Inquire with your Capsa representative for more information.

Wrist Rest Color Options



Grey



Blue



Lavender

Superior Service & Support

Our goal is to ensure every customer receives dependable service and support to keep their operations running smoothly.



Black Book Award

Recognized in 2023 for the highest user satisfaction in a 3rd party research study

**PARTS &
COMPONENTS
REPLACEMENT**

**ON-SITE
SUPPORT**

**PERSONALIZED
CUSTOMER
SUPPORT**

SERVICE

- ▶ We provide rapid-response technical assistance along with prompt parts and component replacement.
- ▶ A commitment to complete customer satisfaction
- ▶ Expert technical guidance, implementation support, and on-site service teams
- ▶ A worldwide network of service technicians and service partners



Why Choose Capsa?

Choosing the right mobile computing workstation can be overwhelming with so many configuration options. At Capsa, we make the process simple. Our experts understand the complexities of clinical workflows and are dedicated to helping you find a solution that aligns with your facility's needs and budget. Whether you prefer an in-person demonstration or a virtual walkthrough, we'll guide you through every option. Rely on our experience, knowledge, and tools to select the ideal workstation for your unique environment.



Engineering a Path to Better Care.



Form C-545
©2026 Capsa Healthcare



Certified ISO
27001:2013



Certified ISO
9001:2015

