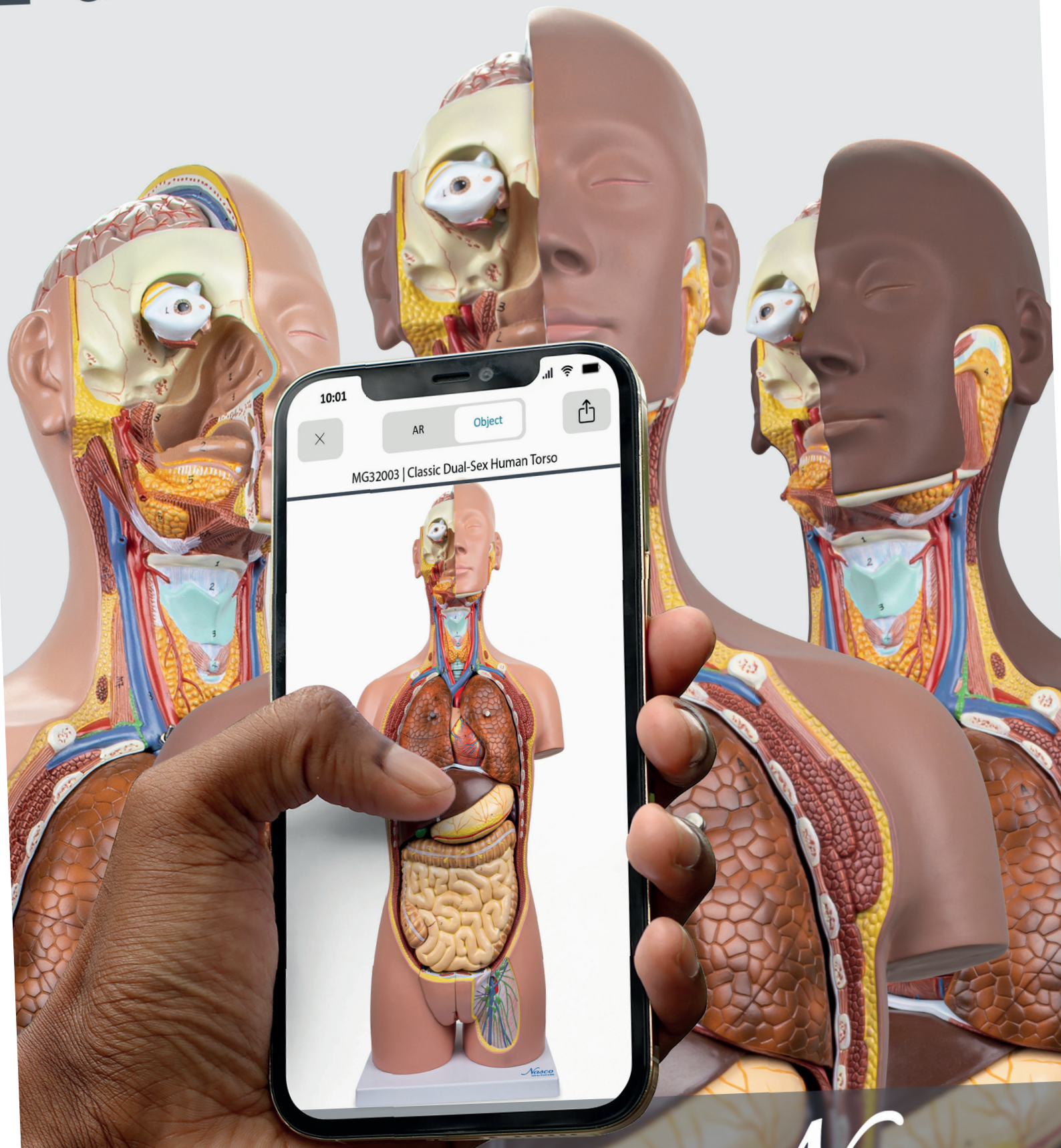


anatomical models



Nasco
HEALTHCARE

Be READY

Nasco Healthcare started from humble beginnings in 1941 with a single product. Today, we have **the largest range of medical simulation products in the world**, but our original mission remains true.

That mission is to prepare frontline healthcare workers, military medics and emergency/rescue personnel to **Be READY**. Ready to deliver optimal patient outcomes and save lives whenever and wherever they are called. Our vision is to create a world with better patient outcomes and fewer lives lost.

We want to do our part to ensure that our everyday heroes have the proper training to be at their best the moment they're called upon. This means offering manikins that realistically simulate clinical, emergency/rescue, and trauma scenarios. Whether it's neonatal care, CPR training, or a fireman drag, our products prepare our heroes for critical, in-the-moment decisions.

We're proud to stand behind products that are designed in the USA to ISO9001 and backed by an up to 5-year warranty.

We invite you to explore our catalog that's full of advanced simulation, emergency, rescue and nursing training solutions. We are committed to bringing you innovative products across all fidelity levels.

Nasco Healthcare wants to be your partner so you can **Be READY**.

Sincerely,

The Nasco Healthcare Team





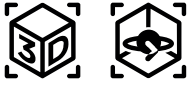
Dental Models

- Resin approved in toxicological tests
- High quality natural molding
- Made of stable and unbreakable synthetic material
- Original replicas
- Numbered and hand painted
- Includes information card with related structures

Lower Incisor, 2 Parts

MG23920

Model of a lower incisor belonging to an adult. It is possible to observe: Crown; Cervical line; and Root.



Technologies available

Features

- **Weight:** 1.1 lbs.
- **Dimensions (Inches):** 11.22 x 2.76 x 3.35



Lower Molar Tooth, 2 Parts

MG29802

This tooth is a 2-part double-rooted lower molar with longitudinal section. The double-rooted lower molar exhibits cavities. This tooth is an accurate model of adult dentition. It is possible to observe: Crown; Cervical line; Source; Apical foramen; Enamel; Dentin; Pulp Cavity; Root canal and pulp canal; Dental pulp.



Technologies available

Features

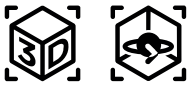
- **Weight:** 1.1 lbs.
- **Dimensions (Inches):** 7.09 x 8.27 x 5.91



Lower Canine Tooth, 2 Parts

MG21502

Lower canine in two parts with longitudinal section. The lower canine is an accurate model of the adult dentition. It is possible to observe: Crown; Cervical line; Source; Apical foramen; Enamel; Dentin; Pulp Cavity; Root canal and pulp canal; Dental pulp.



Technologies available

Features

- **Weight:** 1.1 lbs.
- **Dimensions (Inches):** 12.01 x 3.54 x 4.13



Tooth Set, 10 Times Enlarged

MG31151

Model includes representations 10 times the natural size of human incisors, canines and molars. The canine and molar can be divided into 2 parts each, showing the internal characteristics (dentin, enamel, cement and pulp).



Features

- **Weight:** 2.2 lbs.
- **Dimensions (Inches):** 12.99 x 8.07 x 5.71



Technologies available

Half Lower Human Jaw 3 Times Enlarged

MG29512

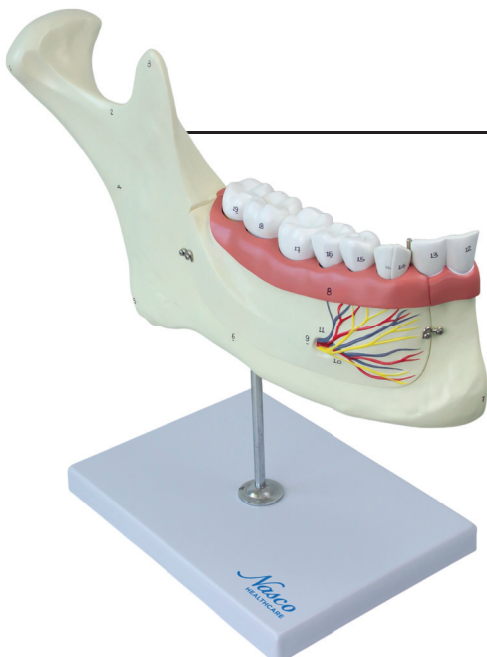
This anatomical model represents the lower half of an adult human mandible, enlarged three times, and is subdivided into six parts to facilitate the detailed study of its structures. It allows for the removal of a portion of the mandible to visualize the tooth roots and internal bone structure, as well as the removal and longitudinal dissection of the canine and molar teeth, allowing observation of their roots, pulp, and nerves.

Features

- The model comes with a polymer base with a metal support and rod
- **Weight:** 2.2 lbs.
- **Dimensions (Inches):** 13.78 x 7.09 x 13.98

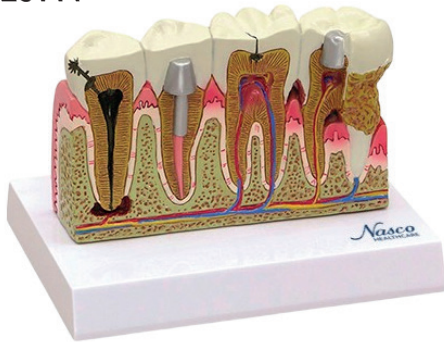


Technologies available



Teeth Model

MG29771



An enlarged adult dentition model, with premolars and molars, presenting various common dental pathologies for detailed study. The model includes gingiva and various dental structures, allowing visualization of different stages of oral health and disease.

Features

- The model comes with a polymer base
- **Weight:** 1.1 lbs.
- **Dimensions (Inches):** 5.51 x 2.01 x 3.5



Technologies available

Dental Morphology 4 Times Enlarged, 7 Parts

MG29837

This anatomical model shows three teeth in their natural position, demonstrating the progression of tooth decay in three distinct stages. The teeth are removable and mounted on a base representing the gum, allowing for detailed study of dental anatomy and the different stages of caries. The model is four times enlarged, facilitating visualization of the structures.



Technologies available

Features

- **Weight:** 1.1 lbs.
- **Dimensions (Inches):** 4.72 x 2.56 x 3.15

Classic Tooth Series, 4 Times Enlarged

MG31152



This anatomical model represents a set of 16 permanent teeth, enlarged four times their natural size, showing in detail the morphology of the mandibular teeth: incisors, canines, premolars, and molars, mounted on a polymer base. It offers precision in the representation of anatomical structures, being ideal for studies and demonstrations.

Features

- The model comes with a polymer base
- **Weight:** 15,4 lbs.
- **Dimensions of the largest size (Inches):** 1.97 x 1.97 x 5.71



Technologies available

Primary Tooth Series, 10 Times Enlarged

MG31150



Anatomical model of deciduous teeth, magnified 10 times, composed of 10 pieces assembled on a base. This detailed model allows the study of the morphology of primary teeth, presenting manual numbering for easy identification of structures.

Features

- The model comes with a polymer base
- **Weight:** 1.1 lbs.
- **Dimensions (Inches):** 20.87 x 14.96 x 5.91



Technologies available

4 Stages of Dentition Development

MG36200



A set of four life-size models, mounted on individual bases, demonstrating the development of human jaws and teeth from birth to adulthood. Each model represents a specific stage of tooth development, allowing for comparison and analysis of morphological changes over time. The models are sectional, exhibiting details of both deciduous and permanent dentition.



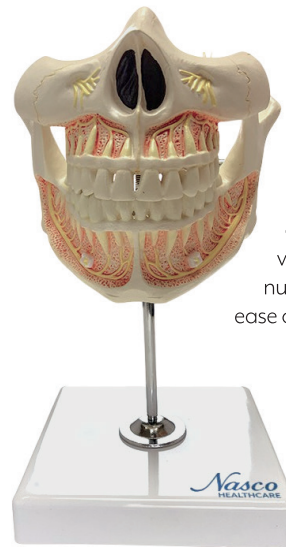
Technologies available

Features

- The model comes with a polymer base with a metal support and rod
- **Weight:** 8.8 lbs.
- **Dimensions (Inches):** 7.09 x 6.69 x 3.54

Adult Denture Model with Nerves and Roots

MG22594



A life-size model demonstrating a complete adult dentition, including a movable upper and lower jaw, allowing for the simulation of mastication. The model details all 32 permanent teeth, with visible roots, fibers, and nerves, numbered and hand-painted for ease of learning.



Technologies available

Features

- The model comes with a polymer base with a metal support and rod
- **Weight:** 1.1 lbs.
- **Dimensions (Inches):** 4.72 x 4.72 x 8.27

Dental Care, 3 Times Enlarged

MG23875

This oral hygiene model, enlarged three times its natural size, demonstrates in detail the anatomy of a complete adult dentition, including a proportionally sized toothbrush. Ideal for practical demonstration of brushing techniques and oral hygiene, the model is hand-painted, facilitating the identification of structures.



Technologies available

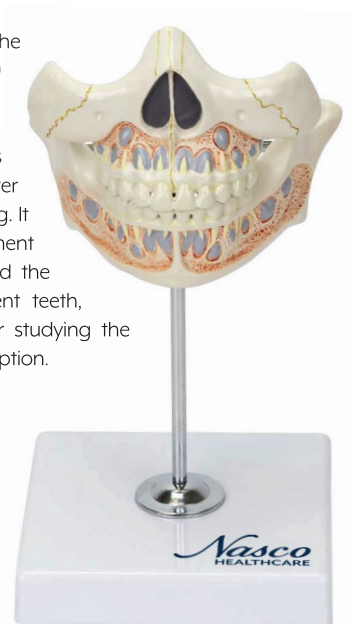
Features

- **Weight:** 2.2 lbs.
- **Dimensions (Inches):** 9.06 x 7.87 x 6.3

Decidue (Milk) Denture Model with Remaining Teeth

MG22595

This model represents the deciduous (primary) dentition of a 5-year-old child, showing the upper and lower jaws with mobility in the lower jaw to simulate chewing. It presents the arrangement of deciduous teeth and the indication of permanent teeth, being a useful tool for studying the chronology of tooth eruption.



Technologies available

Features

- The model comes with a polymer base with a metal support and rod
- **Weight:** 1.1 lbs.
- **Dimensions (Inches):** 4.72 x 4.72 x 8.27

Dental Care, Natural Size

MG23876

A realistic life size model that shows an adult's upper and lower dentition, including palate, crown, gums, upper arch, lower arch and tongue. Helps teach proper oral hygiene procedures. Made from long-lasting synthetic material and hand-assembled in detail, it is long-lasting. The movable arches can adjust the mouth opening for brushing, flossing and other functions. The model has 28 teeth. Suitable for school teaching tools, learning monitors and collectibles, it will also be an important addition to laboratory supplies.



Technologies available

Features

- **Weight:** 1.1 lbs.
- **Dimensions (Inches):** 3.15 x 3.15 x 2.76



Dental Disease, 6X Times Enlarged

MG39442

This educational model presents two magnified cross-sections of a molar, comparing a healthy tooth with one affected by caries. The model demonstrates in detail the internal and external structures of both teeth, including the gum line, and allows for clear visualization of the changes caused by the disease. It is constructed without removable parts, facilitating handling and observation.



Technologies available

Features

- **Weight:** 1.1 lbs.
- **Dimensions (Inches):** 2.76 x 2.36 x 3.94

Clear Human Jaw with Teeth

MG38398



Translucent model with full-size jaw hinges to allow visualization of the roots. The healthy side shows normal dentition and occlusion. The affected side shows multiple pathologies, including: super eruption, apical alveolar abscess with caries, periodontal disease, lateral abscess, abfraction, irregular root curvature, impacted canine, erosion, fractured tooth, horizontal impingement, radicular pulpitis, root canal with crown, internal resorption, attrition, external root resorption, implants and fractured root.

Features

- **Weight:** 1.1 lbs.
- **Dimensions (Inches):** 2.76 x 2.36 x 3.94



Technologies available

Dental Pulp Repair, 5 Parts

MG39443

This endodontic treatment model illustrates the complete root canal process, including apical lesions and surrounding anatomical structures. It features five removable teeth representing each stage: apical lesion, root canal contamination, canal cleaning, canal filling, and crown restoration. Mounted on a transparent base with recesses for precise positioning, the model allows for easy visualization of the tooth root and pulp cavity.



Features

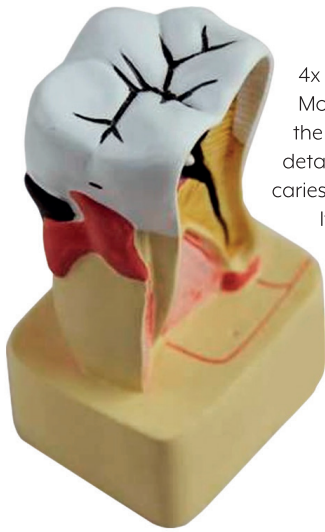
- **Weight:** 1.1 lbs.
- **Dimensions (Inches):** 4.72 x 3.54 x 3.15



Technologies available

Dental Disease, 4 Times Enlarged

MG22728



4x Enlarged Dental Disease Model is a model four times the natural size, exhibiting in detail the process of dental caries in its progressive stages. It shows the tissues that make up the tooth (enamel, dentin, and pulp) and how they are affected by caries, offering a detailed visualization of the disease.



Technologies available

Features

- **Weight:** 1.1 lbs.
- **Dimensions (Inches):** 2.36 x 1.77 x 4.33

Dental Implant Model, 8 Parts

MG39444



An enlarged model demonstrating implants and 3-unit bridges, ideal for patient consultation and explaining the risks of tooth loss, especially with bridge use. The model includes removable teeth, removable crowns that separate from the root, including the dental implant, allowing for detailed visualization of internal structures.



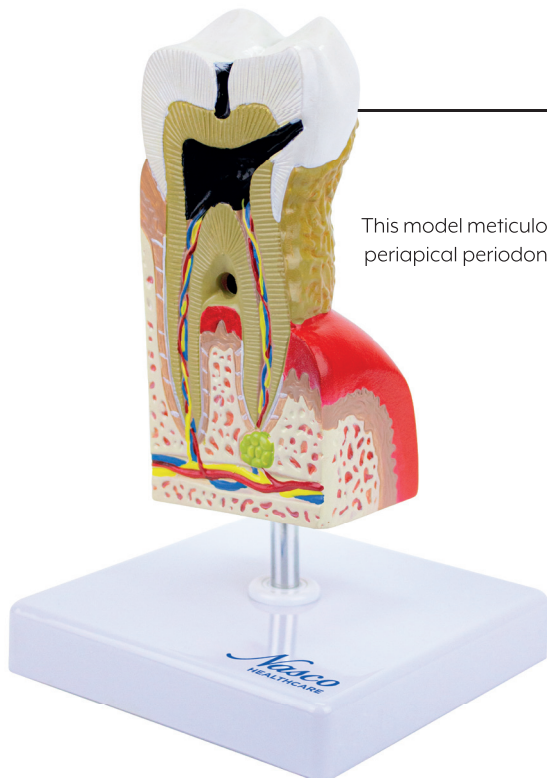
Technologies available

Features

- **Weight:** 1.1 lbs.
- **Dimensions (Inches):** 3.15 x 3.54 x 2.36

Dental Disease, 10X Times Enlarged

MG22727



This model meticulously details major dental pathologies: caries, pulpitis, gingivitis, and periapical periodontitis.

Features

- The model comes with a polymer base and metal rod
- **Weight:** 1.1 lbs.
- **Dimensions (Inches):** 4.33 x 4.33 x 7.87



Technologies available

