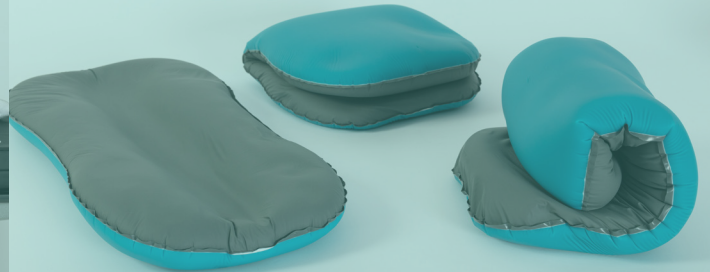
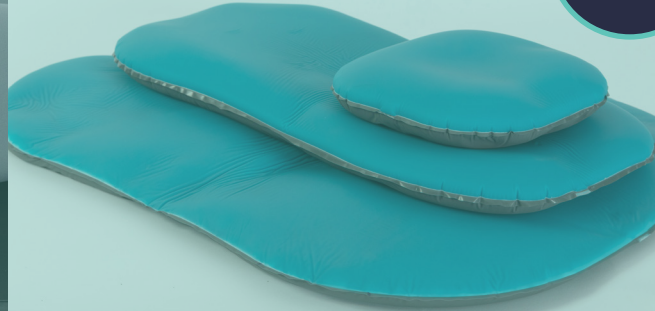




2
year
warranty

Nelo

The **Universal** Patient Positioner



Nelo

Adaptive Support. Stable Protection.



Supports neutral body positioning



Mouldable support for pressure relief with **anti-bottoming out** features



Easy to clean and simple to manoeuvre



Material Benefits

- Composed of cured medical grade silicone and silicone polymer, all encapsulated in a polyurethane film.
- It is dual layer and gives a **soft skin like feel** with traditional silicone that is in all Trulife PressureCare devices, so the same **anti-bottoming out** feature is present.
- Underneath, the grey film is uncured silicone polymer that gives Nelo it's **malleability**.



Adaptive Support

Nelo is versatile. It can be manipulated to support any part of the body whilst still giving the **stability, comfort, relief and neutral body positioning** required.



Nelo is available in 3 sizes: **small, medium and large**. These sizes will give optimal support and stability to all parts of the body.

Nelo has a **dual layer design** which helps the **anti-bottoming out**. This provides constant pressure relief.



Stable Protection

Nelo is made with **trusted, high quality and durable materials** that ensure the highest level of safety and comfort is provided.



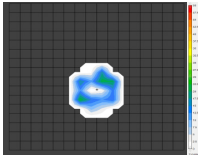
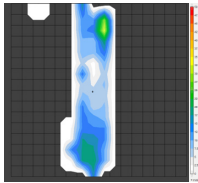
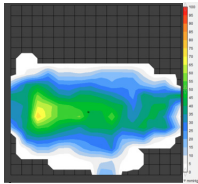
Nelo can be **stacked**, allowing support with customised patient needs. This also allows for the integration of airway management etc.

The **nesting** feature of Nelo brings a contour shape to the body, giving extra support and stability.



Better Relief With Nelo



	Nelo	Evaluation
Small		<p>The heel of a 90kg patient was pressure mapped on the small Nelo. This demonstrates very low pressure with the pressure distributed evenly throughout, adding very low stress to targeted areas.</p>
Medium		<p>A lower arm of a 90kg patient was pressure mapped on the medium Nelo. The arm pressure is low with no high concentrated pressure points.</p>
Large		<p>The chest of a patient weighing 90kg was pressure mapped on the large Nelo. This demonstrates the supportive surface with no concentrated pressure points with broad contact.</p>

*All results are after a 2 hour time period.

Versatile Care, Simplified.

Small - NE100

Provides targeted protection for high-risk areas, helping reduce pressure in smaller or localised regions, including head, ankles and heels. **180x180x45mm**



Medium - NE200

Delivering balanced coverage and comfort, redistributing pressure to help prevent skin breakdown in commonly affected areas such as elbow and knees. **240x490x40mm**



Large - NE300

Offering maximum surface coverage and pressure redistribution, supporting patient comfort and helping protect vulnerable skin over wider areas such as back and behind the knees. **440x590x40mm**



