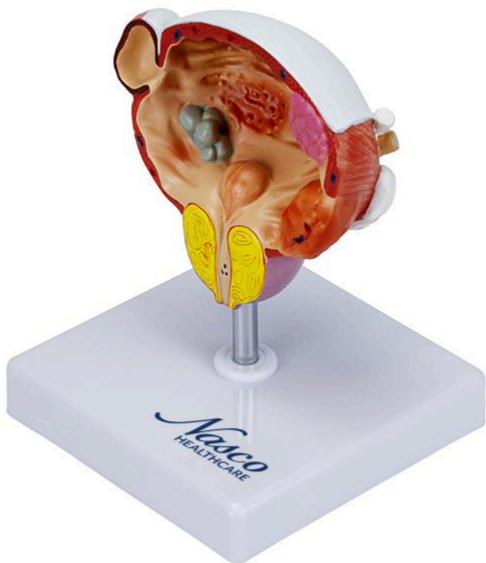




MG22730 | HUMAN BLADDER AND PROSTATE DISEASES



Nasco
HEALTHCARE





Anatomical Model of Bladder and Prostate Diseases, life-size, shows a frontal section revealing five different pathologies: bladder stones, cystitis, diverticulum, benign prostatic hyperplasia (BPH), and bladder tumor in three distinct stages. Anatomical structures are numbered and hand-painted in didactic colors for easy understanding. The model is mounted on a polymer base with a metal support and rod.

Applications:

Study of anatomy in schools and universities; professional training; medical and scientific information. Ideal for teaching and demonstrations in anatomy, urology, and other health areas courses.

Technical Characteristics:

- * High didactic level;
- * Numbered and hand-painted in didactic colors;
- * Precise details for better learning;
- * High-fidelity natural molding;



- * Manufactured from resistant synthetic material;
- * Detailed replicas;
- * Includes an information card with the related structures;
- * Resin approved in toxicological tests.

3D Technology and Augmented Reality:

Our anatomical models offer a visual complement through information cards that activate 3D models viewable in augmented reality (AR). This interactive platform assists learning, allowing comparative analysis of anatomical structures and offering resources for continuing education in anatomy, physiology, and pathophysiology.

Technical Specifications:

- * Scale: Life-size
- * Material: Synthetic resin

Main Structures:

Bladder: A hollow muscular organ that stores urine produced by the kidneys. It has distinct regions such as apex (anterior), body, fundus (posterior), and neck. Its distensibility capacity is crucial for its function.

Bladder Stones: Mineral concretions that form in the bladder, usually due to the precipitation of salts present in the urine. They can vary in size and number, causing symptoms such as pain and difficulty urinating.

Cystitis: Inflammation of the bladder, frequently caused by bacterial infection. It is characterized by symptoms such as pelvic pain, urinary urgency and frequency, and eventually hematuria (blood in the urine).

Diverticulum: Protrusion or herniation of the bladder wall, forming a small pouch. It can retain urine and increase the risk of infections.

Bladder Tumor (3 different stages): The model illustrates the progression of a bladder tumor in different stages, showing the growth and invasion of adjacent tissues. The representation allows visualization of the increasing severity of the disease.

Benign Prostatic Hyperplasia (BPH): Non-cancerous enlargement of the prostate gland, common in older men. In the model, it demonstrates the increased glandular volume and the



consequent compression of the urethra, causing obstructive urinary symptoms.

Prostate: Exocrine gland of the male genital system, located below the bladder. It secretes a fluid that makes up part of the semen, contributing to the motility and survival of sperm.

Urethra: The canal that transports urine from the bladder to the outside of the body. In men, it also serves as a passage for semen during ejaculation.

Ureter: Each of the two tubes that carry urine from the kidneys to the bladder.

Seminal Vesicle: Glands that produce a fructose-rich fluid that nourishes sperm. This fluid constitutes a significant part of semen.

Other structures can be verified directly on the physical piece or on the interactive 3D model.

About the Anatomical Models:

They are developed with resin replication technology, supplying the need for anatomical pieces for teaching and research. They present the essential morphological characteristics with excellent cost-benefit, good resistance, hand painting, and numbering for precise identification of structures.

List of all visible structures:

- bladder
- bladder stones
- interstitial cystitis
- diverticulum
- 3-stage bladder tumor
- 3-stage bladder tumor
- 3-stage bladder tumor
- cystitis
- ureteral orifice
- urethra
- right lobe of the prostate
- left lobe of the prostate
- ejaculatory duct orifice
- prostatic utricle
- benign prostatic hyperplasia (BPH)
- seminal vesicle
- ampulla of the seminal duct
- ampulla of the seminal duct



- prostate
- diverticulum
- ureter
- vas deferens
- seminal vesicle