

anatomical models



Nasco
HEALTHCARE

Be READY

Nasco Healthcare started from humble beginnings in 1941 with a single product. Today, we have **the largest range of medical simulation products in the world**, but our original mission remains true.

That mission is to prepare frontline healthcare workers, military medics and emergency/rescue personnel to **Be READY**. Ready to deliver optimal patient outcomes and save lives whenever and wherever they are called. Our vision is to create a world with better patient outcomes and fewer lives lost.

We want to do our part to ensure that our everyday heroes have the proper training to be at their best the moment they're called upon. This means offering manikins that realistically simulate clinical, emergency/rescue, and trauma scenarios. Whether it's neonatal care, CPR training, or a fireman drag, our products prepare our heroes for critical, in-the-moment decisions.

We're proud to stand behind products that are designed in the USA to ISO9001 and backed by an up to 5-year warranty.

We invite you to explore our catalog that's full of advanced simulation, emergency, rescue and nursing training solutions. We are committed to bringing you innovative products across all fidelity levels.

Nasco Healthcare wants to be your partner so you can **Be READY**.

Sincerely,

The Nasco Healthcare Team





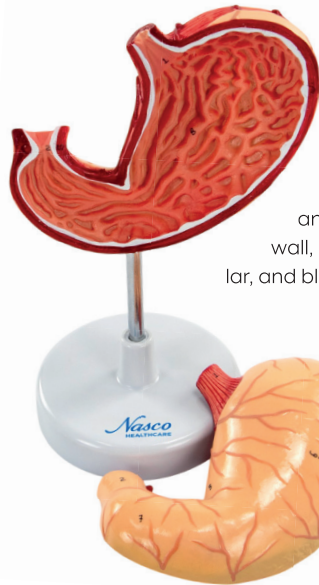
- Resin approved in toxicological tests
- High quality natural molding
- Made of stable and unbreakable synthetic material
- Original replicas
- Numbered and hand painted
- Includes information card with related structures

Digestive System

stomach, liver, pancreas, intestines

Stomach, 2 Parts

MG23164



This model represents a life-size stomach, dissected along a medial plane, allowing visualization of the internal structure, including the mucosa, pylorus, and a section of the gastric wall, with its superficial, muscular, and blood vessel layers.



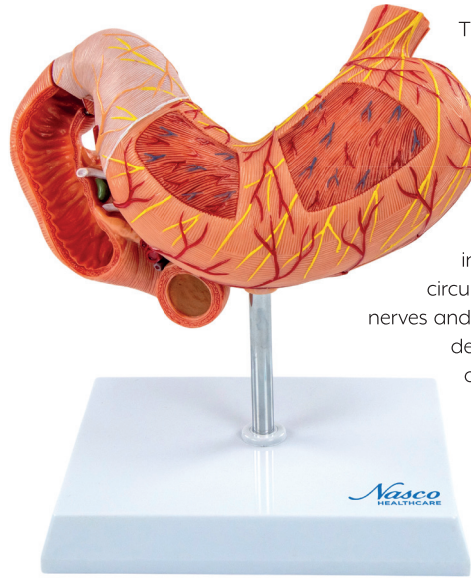
Technologies available

Features

- The model comes with a polymer base with a metal support and rod
- **Weight:** 1.1 lbs.
- **Dimensions (Inches):** 4.33 x 5.12 x 7.09

Stomach with Pancreas and Duodenum, 3 Parts

MG40891



Three-part anatomical model of the Stomach with Pancreas and Duodenum, offering a detailed visualization of the layers of the stomach wall, from the cardia to the pylorus. The front of the stomach and the opened duodenum, with the pancreas, are removable, allowing for in-depth observation of the internal structures and the longitudinal, circular, and oblique muscle layers, including nerves and vascular structures. The model also includes the lower esophagus and representation of blood vessels and nerves.

Features

- The model comes with a polymer base with a metal support and rod
- **Weight:** 1.1 lbs.
- **Dimensions (Inches):** 6.5 x 5.12 x 4.33

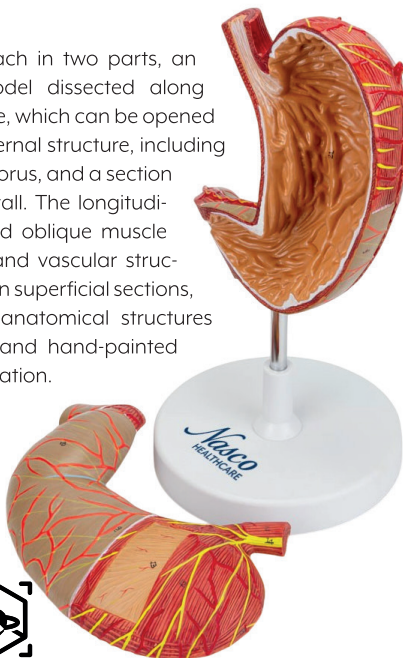


Technologies available

Stomach 1.5 Times Enlarged, 2 Parts

MG23160

Enlarged Stomach in two parts, an anatomical model dissected along the medial plane, which can be opened to reveal the internal structure, including the mucosa, pylorus, and a section of the gastric wall. The longitudinal, circular, and oblique muscle layers, nerves, and vascular structures are visible in superficial sections, and the main anatomical structures are numbered and hand-painted for easy identification.



Technologies available

Features

- The model comes with a polymer base with a metal support and rod
- **Weight:** 1.1 lbs.
- **Dimensions (Inches):** 4.33 x 6.3 x 7.87

Stomach with Rear Organs of Upper Abdomen, 6 Parts

MG23161

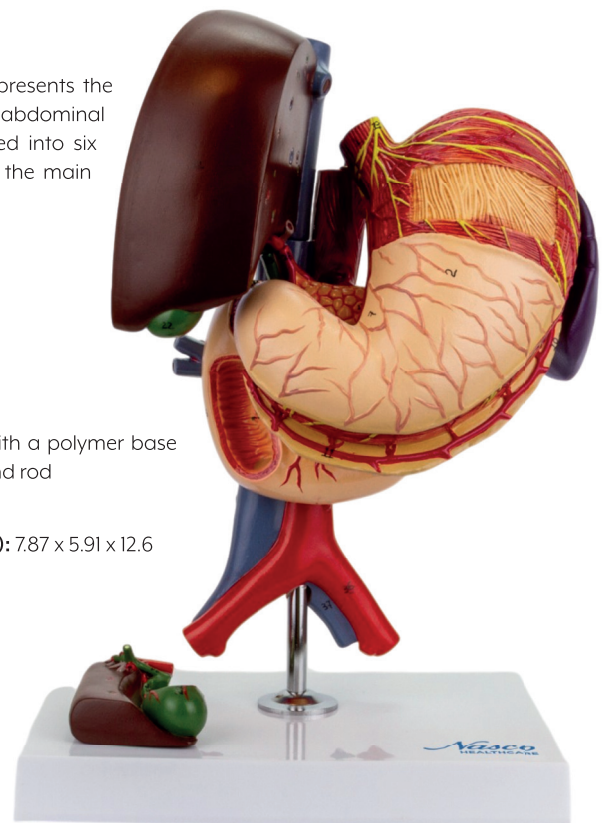
This anatomical model represents the stomach and posterior abdominal organs, life-size and divided into six parts, accurately showing the main anatomical structures.

Features

- The model comes with a polymer base with a metal support and rod
- **Weight:** 2.2 lbs.
- **Dimensions (Inches):** 7.87 x 5.91 x 12.6



Technologies available



Stomach Section with Gastric Ulcers

MG23162

A life-size, dissected model representing the most common stomach pathologies, including gastric ulcer, pyloric stenosis, chronic atrophic gastritis, hiatal hernia, gastritis with bleeding, and ulcerated gastric carcinoma. Pathologies are represented in detail.



Technologies available

Features

- The model comes with a polymer base with a metal support and rod
- **Weight:** 1.1 lbs.
- **Dimensions (Inches):** 6.3 x 5.12 x 7.09



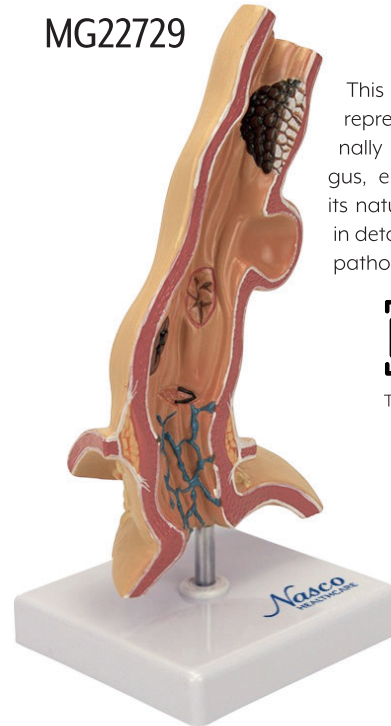
Esophagus Disease, 5 Times Enlarged

MG22729

This anatomical model represents a longitudinally sectioned esophagus, enlarged five times its natural size, exhibiting in detail several common pathologies.



Technologies available



Features

- The model comes with a polymer base with a metal support and rod
- **Weight:** 1.1 lbs.
- **Dimensions (Inches):** 4.33 x 4.33 x 9.84

Micro Anatomy of Human Stomach Wall, 150 Times Enlarged

MG23168

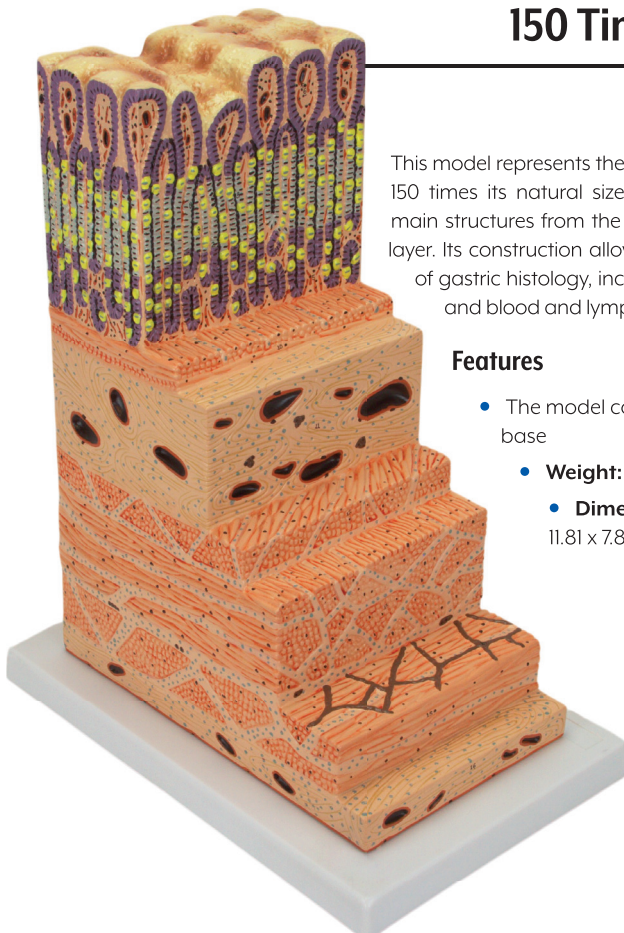
This model represents the stomach wall magnified 150 times its natural size, exhibiting in detail the main structures from the epithelium to the serosa layer. Its construction allows for the detailed study of gastric histology, including different cell types and blood and lymphatic vessels.

Features

- The model comes with a polymer base
- **Weight:** 4.4 lbs.
- **Dimensions (Inches):** 11.81 x 7.87 x 14.96



Technologies available



Liver with Gallbladder

MG23416



This life-size, realistic model meticulously reproduces the anatomy of a human liver, including the gallbladder, hilum vessels, extrahepatic ducts, and major ligaments. Its detailed construction and hand-painting make it a suitable tool for study and demonstration.

Features

- The model comes with a polymer base with a metal support and rod
- **Weight:** 2.2 lbs.
- **Dimensions (Inches):** 6.89 x 4.33 x 7.09



Technologies available

Liver with Gall Bladder, Pancreas and Duodenum, 2 Parts

MG23418

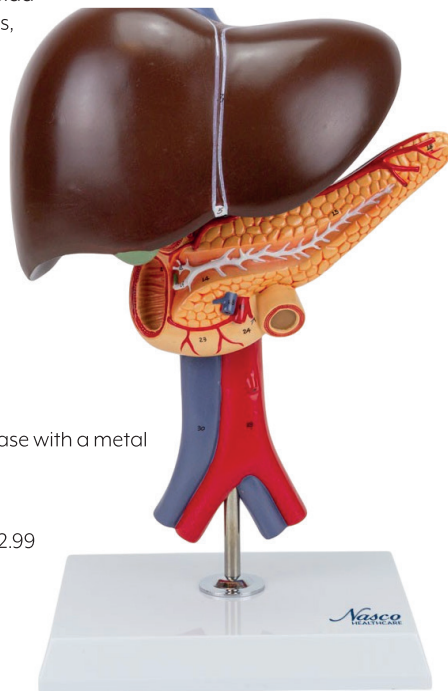
Anatomical Model of Liver with Gallbladder, Pancreas and Duodenum, in 2 parts, representing the liver with gallbladder, pancreas and duodenum partially dissected. The model includes the inferior vena cava, the abdominal aorta and the pancreatic ducts, with important anatomical structures numbered and in didactic colors. It presents the liver with its diaphragmatic and visceral surfaces, lobes and ligaments, in addition to detailing the parts of the pancreas and duodenum.

Features

- The model comes with a polymer base with a metal support and rod
- **Weight:** 1.1 lbs.
- **Dimensions (Inches):** 4.72 x 5.51 x 12.99



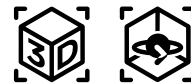
Technologies available



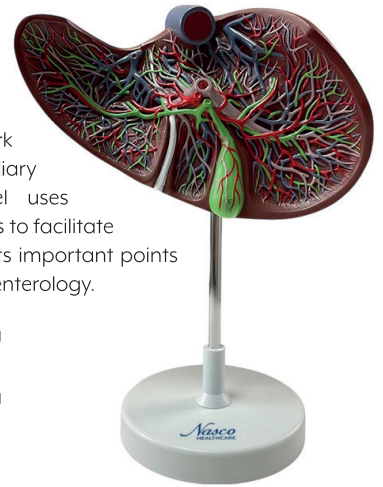
Liver Section with Gallbladder, 1.5 Times Enlarged

MG31105

Liver Section with Enlarged Gallbladder (1.5x), an anatomical model representing the liver and gallbladder in open section, displaying in detail the complex network of vessels and biliary ducts. The model uses differentiated colors to facilitate study and highlights important points for learning gastroenterology.



Technologies available

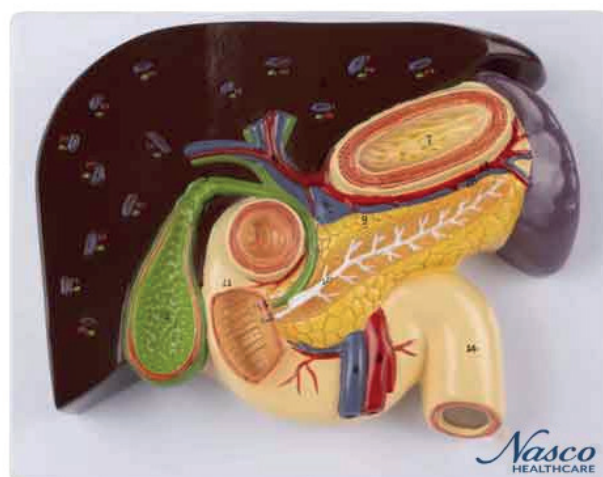


Features

- The model comes with a polymer base with a metal support and rod
- **Weight:** 2.2 lbs.
- **Dimensions (Inches):** 5.91 x 6.69 x 10.24

Liver with Gall Bladder, Pancreas and Duodenum

MG23419



This anatomical model represents a section of the liver, including the gallbladder, pancreas, and duodenum, highlighting the hepatic and pancreatic ducts. The anatomical structures are detailed, hand-painted, and numbered for easy identification.



Technologies available

Features

- The model comes with a polymer base
- **Weight:** 1.1 lbs.
- **Dimensions (Inches):** 9.84 x 7.09 x 2.56

Liver Section with Pathology, 2 Parts

MG23415

Two-part anatomical liver model with pathologies, presented at 1/3 life size. This model shows a representation of liver morphology, including various pathologies, with didactic colors that facilitate learning.



Technologies available



Features

- The model comes with a polymer base with a metal support and rod
- **Weight:** 1.1 lbs.
- **Dimensions (Inches):** 4.33 x 4.33 x 8.27

Liver Section with Different Stages of Cancer

MG36148



Technologies available



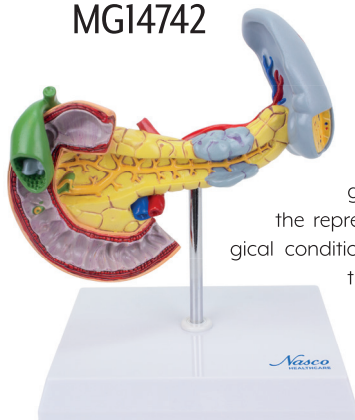
Anatomical Model of Liver Section with Pathology, representing the progression of fatty liver disease in six distinct stages: healthy liver, simple fatty liver, inflamed liver, non-alcoholic fatty liver disease, non-alcoholic fatty liver disease with cirrhosis, and non-alcoholic fatty liver disease with cirrhosis and carcinoma.

Features

- The model comes with a polymer base
- **Weight:** 2.2 lbs.
- **Dimensions (Inches):** 7.87 x 5.91 x 7.87

Pancreas with Pathology

MG14742



This life-size anatomical model offers a detailed study of the pancreas, spleen, and gallbladder, including the representation of pathological conditions such as pancreatic cancer, gallstones, splenic rupture, and duodenal ulcer.



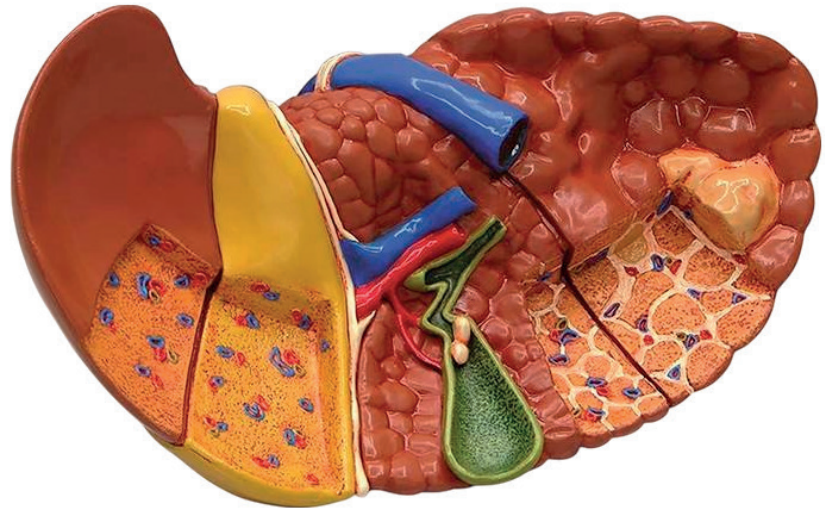
Technologies available

Features

- The model comes with a polymer base with a metal support and rod
- **Weight:** 2.2 lbs.
- **Dimensions (Inches):** 7.87 x 3.94 x 5.91

Liver Section with Pathology

MG36908



Anatomical model of a liver section with pathologies, representing a life-size liver with healthy and affected sections due to biliary obstruction, nodular cirrhosis, and tumor. The gallbladder is included, exhibiting gallstones.

Features

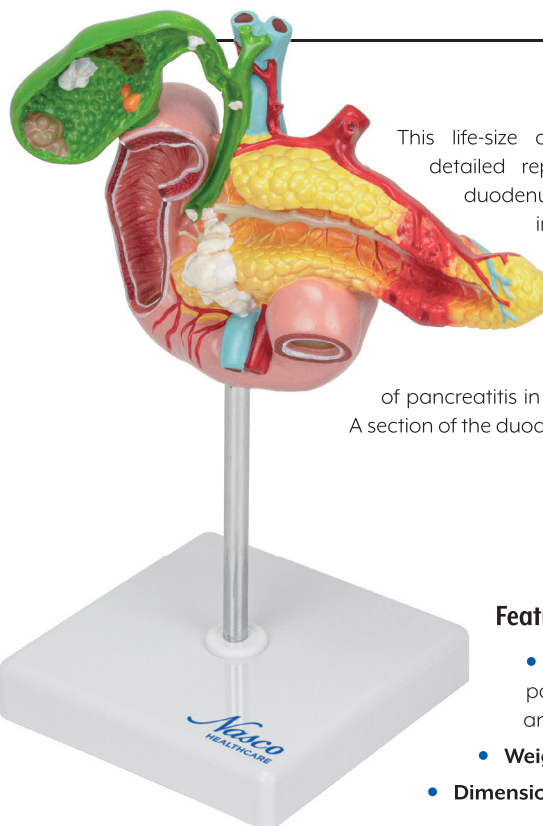
- The model comes with a polymer base with a metal support and rod
- **Weight:** 2.2 lbs.
- **Dimensions (Inches):** 7.99 x 4.49 x 5.51



Technologies available

Pancreas, Duodenum and Gallbladder with Pathology

MG30031



This life-size anatomical model presents a detailed representation of the pancreas, duodenum, and gallbladder, including important pathologies. The gallbladder, partially opened, shows gallstones, cholecystitis, polyps, and an example of carcinoma. The pancreas demonstrates a representation of pancreatitis in the tail and cancer in the head. A section of the duodenum displays a duodenal ulcer.



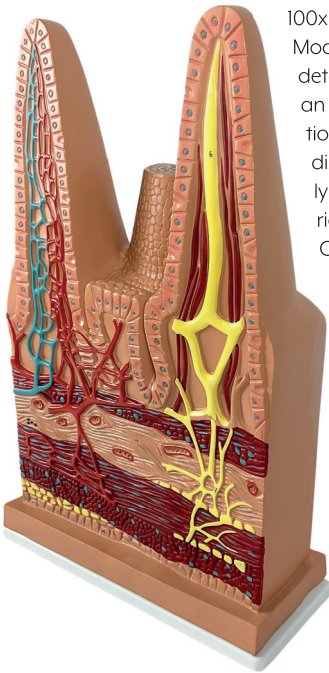
Technologies available

Features

- The model comes with a polymer base with a metal support and rod
- **Weight:** 1.1 lbs.
- **Dimensions (Inches):** 9.84 x 7.09 x 5.91

Intestinal Villi, 100 Times Enlarged

MG38529



100x Enlarged Anatomical Model of Intestinal Villus: This detailed model presents an enlarged representation of three intestinal villi, displaying blood vessels, lymphatic vessels, capillaries, and epithelial cells. One villus is shown intact, another is sectioned to reveal its vascular network, and the third is sectioned to show the lymphatic vessels. The model is numbered and hand-painted, facilitating the study of anatomical structures.



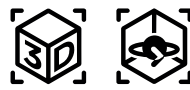
Technologies available

Features

- The model comes with a polymer base
- **Weight:** 2.2 lbs.
- **Dimensions (Inches):** 9.84 x 16.14 x 3.94

Micro Anatomy Intestinal Villi, 400 Times Enlarged

MG35533



Technologies available

Features

- The model comes with a polymer base
- **Weight:** 1.1 lbs.
- **Dimensions (Inches):** 5.12 x 6.3 x 3.35

Appendix, 2 Times Enlarged

MG20198

This model, twice the natural size, shows the opened cecum, revealing the appendix, ileum, ileocecal orifice, and ileocecal valve. Blood vessels and lymph nodes are also shown in detail, facilitating the study of the region.



Technologies available

Features

- The model comes with a polymer base
- **Weight:** 1.1 lbs.
- **Dimensions (Inches):** 12.99 x 9.06 x 3.15

Digestive System, 2 Parts



MG35391

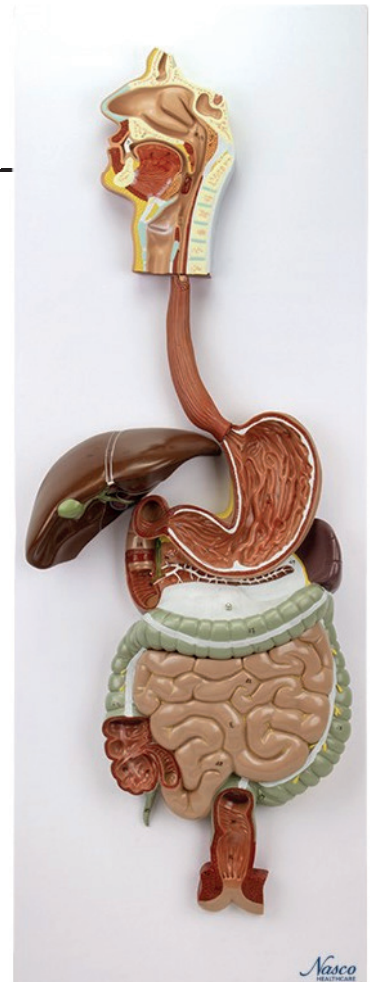
A life-size model, mounted on a polymer base, showcasing the human digestive tract from the oral cavity to the rectum, in sections. The nasal cavity, pharynx, and the first part of the esophagus are sectioned in a midsagittal plane. The stomach is opened in a frontal plane, and the duodenum, cecum, part of the small intestine, and rectum are open for internal demonstration. The liver is shown with the gallbladder and pancreas, exposing their internal features. The transverse colon is removable, and a relief head model showing the anatomy of the mouth with salivary glands accompanies the set.



Technologies available

Features

- The model comes with a polymer base
- **Weight:** 6.6 lbs.
- **Dimensions (Inches):** 35.43 x 12.6 x 5.51



Digestive System, 3 Parts



MG31317

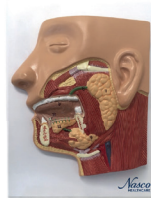
This life-size model, mounted on a base, presents the human digestive tract from the oral cavity to the rectum, in sections. The nasal cavity, pharynx, and beginning of the esophagus are sectioned sagittally, while the stomach is opened anteriorly, revealing internal structures. The liver, gallbladder, and pancreas are shown in detail, and the transverse colon is removable. An included relief head model details the anatomy of the mouth, including salivary glands.



Technologies available

Features

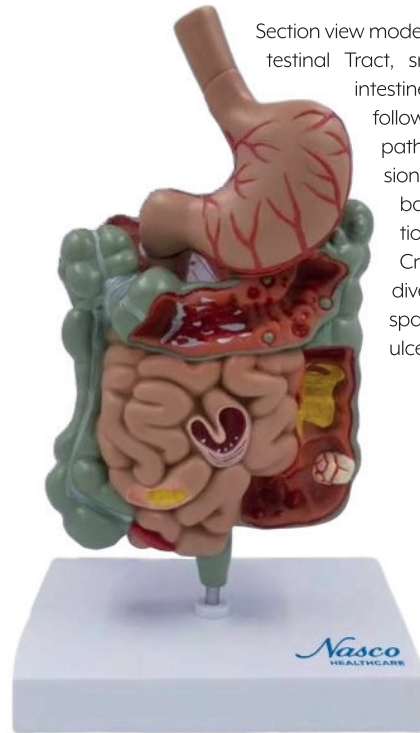
- The model comes with a polymer base
- **Weight:** 5.5 lbs.
- **Dimensions (Inches):** 35.43 x 12.6 x 5.51



Gastro Intestinal Tract with Pathologies

MG39708

Section view model of the Gastrointestinal Tract, small and large intestine with the following common pathologies: adhesions, appendicitis, bacterial infections, cancer, Crohn's disease, diverticulitis, polyps, spastic colon and ulcerative colitis.



Technologies available

Features

- The model comes with a polymer base with a metal support and rod
- **Weight:** 2.2 lbs.
- **Dimensions (Inches):** 5.98 x 2.52 x 7.76

Colon with Intestinal Pathologies

MG21850

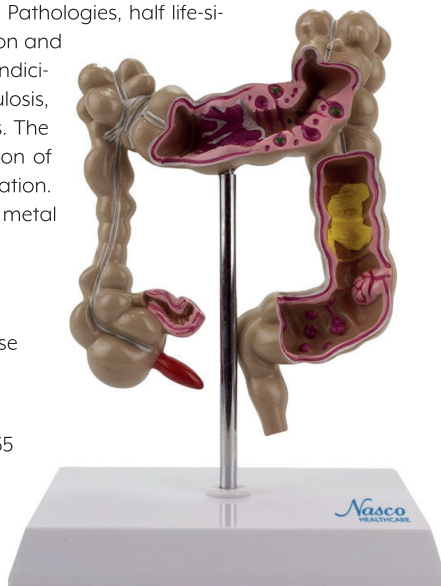
Anatomical Model of Colon with Intestinal Pathologies, half life-size, presents various pathologies of the colon and rectum, including adhesions, cancer, appendicitis, bacterial infection, diverticulitis, diverticulosis, polyps, spastic colon, and ulcerative colitis. The model is detailed, allowing the identification of these pathologies for study and presentation. Includes a polymer base with support and metal rod, as well as references and markings.

Features

- The model comes with a polymer base with a metal support and rod
- **Weight:** 1.1 lbs.
- **Dimensions (Inches):** 7.09 x 5.51 x 9.65



Technologies available



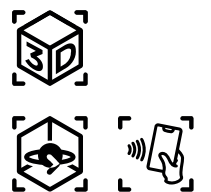
Intestine with Pathologies

MG35589

Anatomical Model of Colon and Rectum Intestinal Pathologies, reduced scale, representing the large intestine with ascending, transverse, and sigmoid colon, appendix, and rectum. Features hand-painting, detailing internal anatomy and various common pathologies and conditions.

Features

- The model comes with a polymer base with a metal support and rod
- **Weight:** 2.2 lbs.
- **Dimensions (Inches):** 6.06 x 2.52 x 7.76



Technologies available



Rectum Cross Section with Pathology, 5 Times Enlarged

MG31005

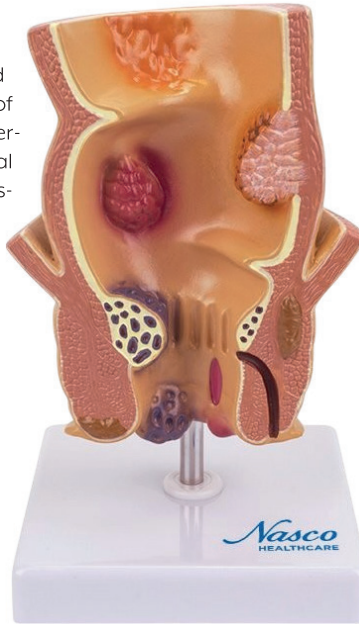
This anatomical model presents, at an enlarged scale (5 times natural size), various pathologies of the excretory system, including hemorrhoids (internal and external, with grade classification), anal fistula, anal fissure, two types of abscesses (intersphincteric and anal), polyps, and rectal carcinoma, in addition to ulcerative colitis. Its single-piece construction facilitates visualization and study of these structures.



Technologies available

Features

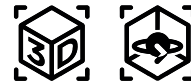
- The model comes with a polymer base with a metal support and rod
- **Weight:** 1.1 lbs.
- **Dimensions (Inches):** 4.33 x 4.33 x 7.87



Inguinal Hernia Urology

MG30132

Anatomical Model of Pelvis with Indirect Inguinal Hernia, half life size, showing a sagittal and medial section of a male pelvis with indirect inguinal hernia.



Technologies available

Features

- The model comes with a polymer base
- **Weight:** 1.1 lbs.
- **Dimensions (Inches):** 4.33 x 3.54 x 4.92

Rectum Cross Section, 3 Times Enlarged

MG29767

3x Enlarged Anatomical Model of the Anus, representing a frontal section with a lateral view of the human anus, showing in detail the structures of the rectum, including the internal and external sphincter muscles, mucous membrane, ampullae, and anal valves. Important anatomical structures are numbered and hand-painted.



Features

- The model comes with a polymer base
- **Weight:** 1.1 lbs.
- **Dimensions (Inches):** 7.87 x 5.91 x 4.72



Technologies available

Rear Organs of Upper Abdomen

MG29951

This life-size anatomical model provides an accurate representation of the pancreas (opened to show the pancreatic duct), spleen, and duodenum (partially dissected), ideal for detailed study of posterior abdominal anatomy. Important anatomical structures are numbered and hand-painted for easy identification and learning.



Technologies available

Features

- The model comes with a polymer base with a metal support and rod
- **Weight:** 1.1 lbs.
- **Dimensions (Inches):** 4.72 x 7.48 x 10.63

