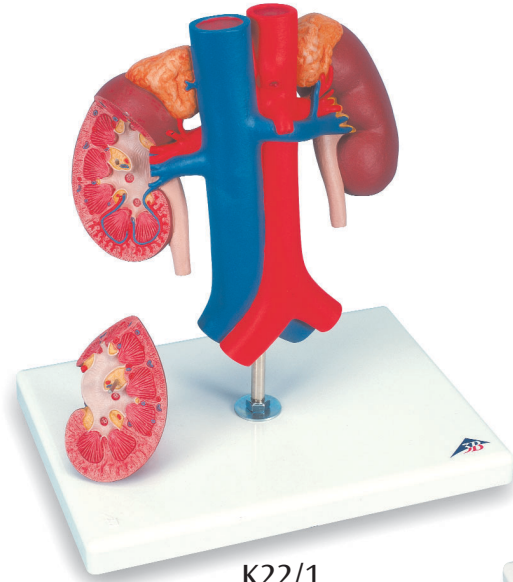
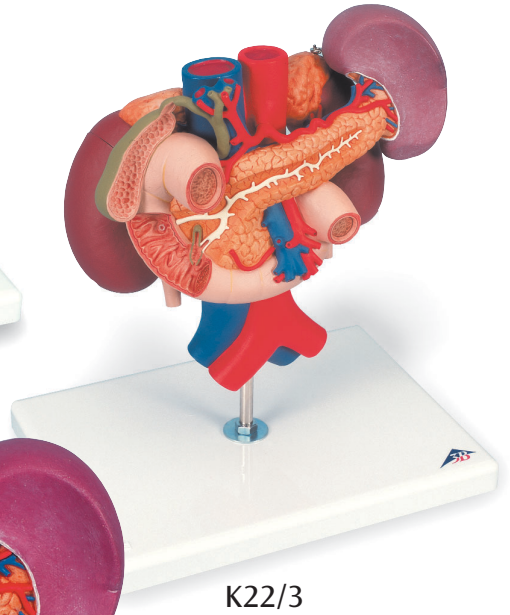


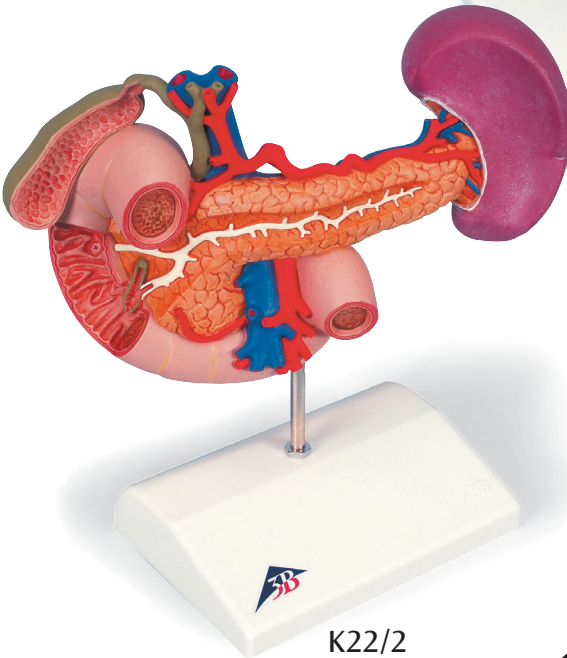
# K22/1, K22/2, K22/3



K22/1



K22/3



K22/2



**K22/1, K22/3:**

- 1 Glandula suprarenalis
- 2 Ren
- 3 Pelvis renalis
- 4 Medulla renalis
- 5 Cortex renalis
- 6 Ureter
- 7 Vena cava inferior
- 8 Aorta abdominalis
- 9 Vena renalis
- 10 Arteria renalis
- 11 Arteria mesenterica superior

**K22/2, K22/3:**

- 12 Vesica biliaris
- 13 Ductus choledochus
- 14 Duodenum
- 15 Papilla duodeni minor
- 16 Papilla duodeni major
- 17 Arteria mesenterica superior
- 18 Vena mesenterica superior
- 19 Pancreas
- 20 Ductus pancreaticus
- 21 Splen
- 22 Arteria splenica
- 23 Truncus coeliacus
- 24 Arteria hepatica communis
- 25 Arteria gastroduodenalis
- 26 Arteria hepatica propria
- 27 Ductus cysticus
- 28 Vena splenica
- 29 Vena mesenterica inferior
- 30 Arteria pancreaticoduodenalis inferior

Models K22/1, K22/2 and K22/3 are modeled in natural size.

K22/1: Relative positions of the kidneys, the suprarenal glands, the inferior vena cava and the abdominal aorta

K22/2: Relative positions of the pancreas, the duodenum and the spleen

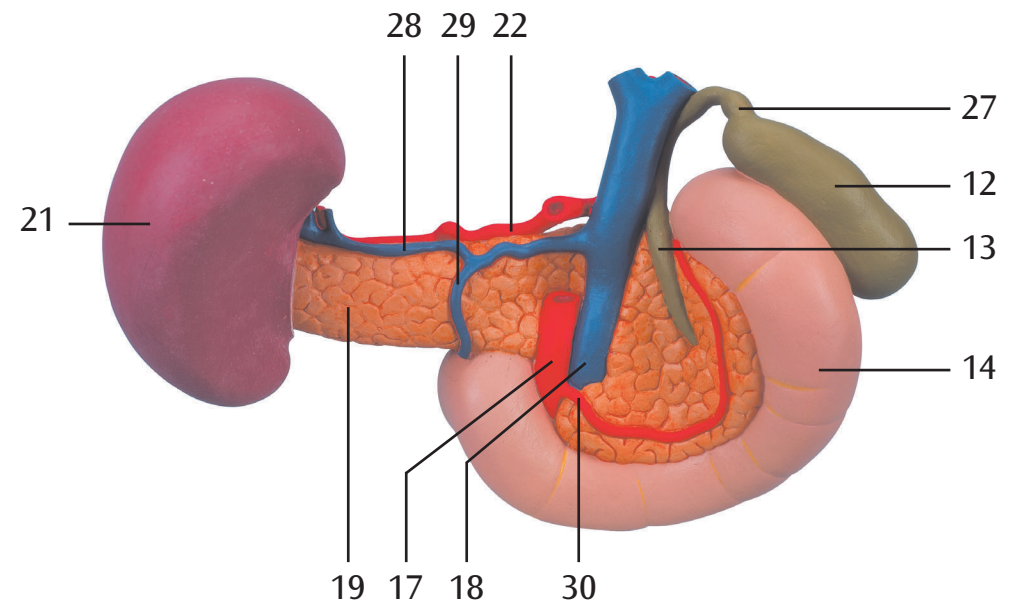
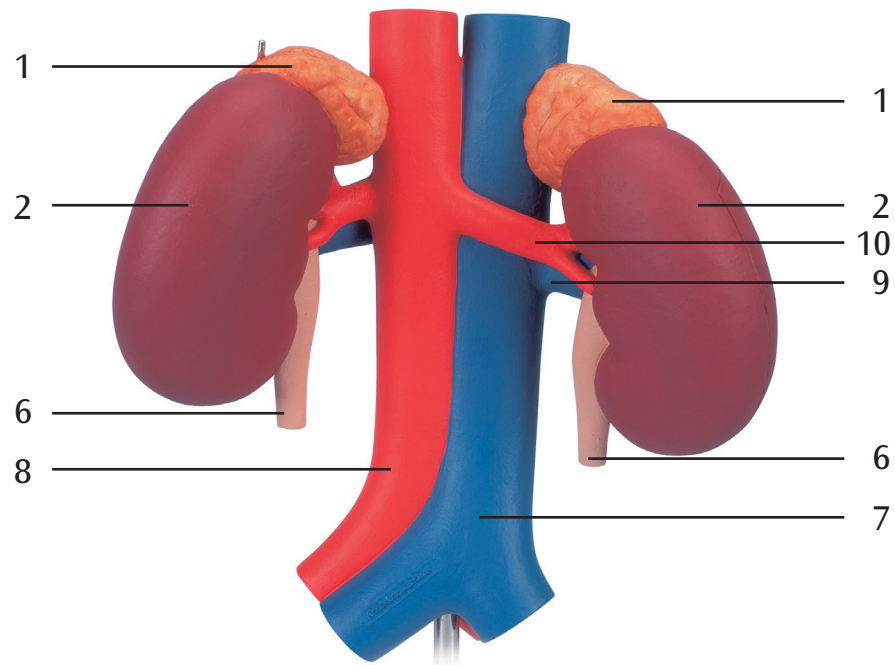
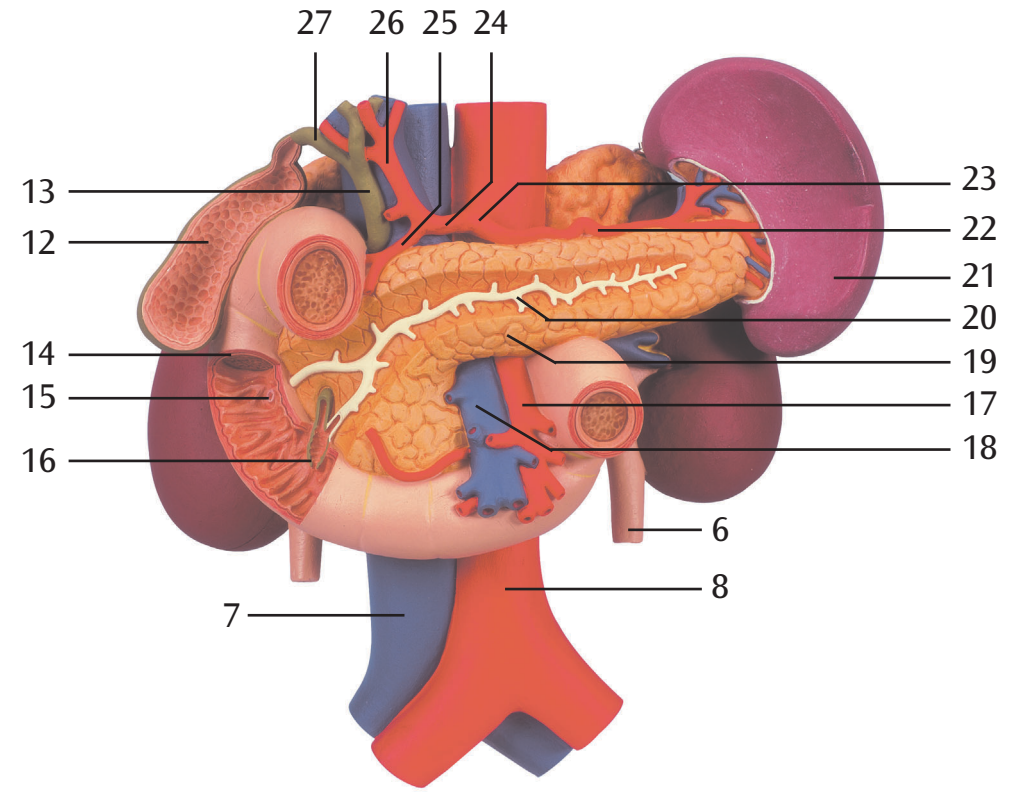
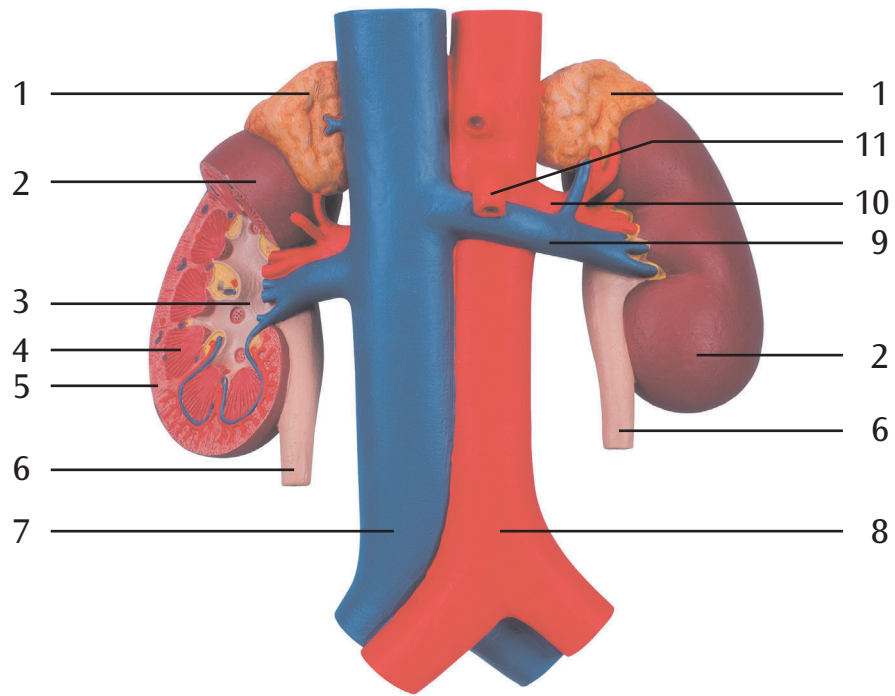
K22/3: Relative positions of the kidneys, the suprarenal glands, the pancreas, the duodenum, the spleen, the inferior vena cava and the abdominal aorta

**K22/1 and K22/3:**

- 1 Suprarenal gland
- 2 Kidney
- 3 Renal pelvis
- 4 Renal medulla
- 5 Renal cortex
- 6 Ureter
- 7 Inferior vena cava
- 8 Abdominal aorta
- 9 Renal vein
- 10 Renal artery
- 11 Superior mesenteric artery

**K22/2 and K22/3:**

- 12 Gallbladder
- 13 Common bile duct
- 14 Duodenum
- 15 Minor duodenal papilla
- 16 Major duodenal papilla
- 17 Superior mesenteric artery
- 18 Superior mesenteric vein
- 19 Pancreas
- 20 Pancreatic duct, WIRSUNG duct
- 21 Spleen
- 22 Splenic artery
- 23 Celiac trunk
- 24 Common hepatic artery
- 25 Gastroduodenal artery
- 26 Proper hepatic artery
- 27 Cystic duct
- 28 Splenic vein
- 29 Inferior mesenteric vein
- 30 Inferior pancreaticoduodenal artery





**3B SCIENTIFIC<sup>®</sup> PRODUCTS**