



...going one step further



VA20
(1001237)

This is a model of a male torso of natural size divided into 15 horizontal slices cut at different levels. The individual slices can be moved out on a metal bar, and can be rotated along the sagittal axis to view the underside. On both the upper and lower sides of each slice the anatomical structures, such as bones, muscles, organs, blood vessels and nerves are shown as horizontal sections. The most important structures are listed on the following pages using current international nomenclature.

This transverse section MRI torso is especially suited to the interpretation and therefore more effective understanding of tomography images; particularly as they were developed using computer or MRI imaging (CT, MRT).

Total height with tripod: 1.20 m

weight: approx. 26 kg

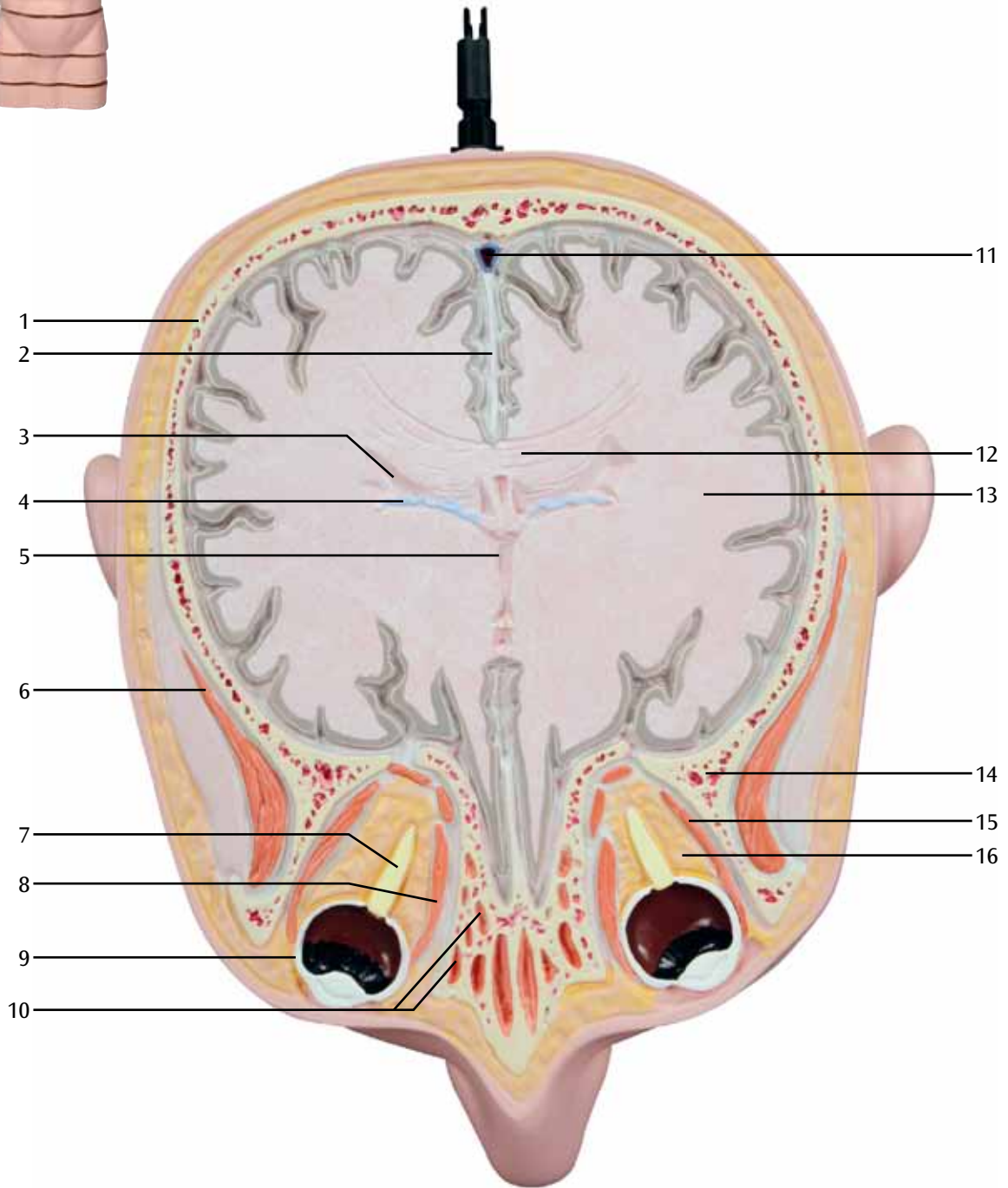
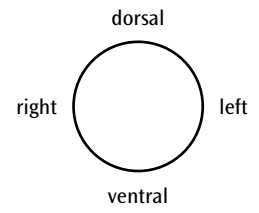
- | | |
|---------------------------------------|--|
| 1 Parietal bone | 54 Laryngeal cavity |
| 2 Cerebral falx | 55 Trapezius |
| 3 Lateral ventricle | 56 Proper muscles of back (erector spinae) |
| 4 Choroid plexus | 57 Levator scapulae |
| 5 Third ventricle | 58 Longus colli |
| 6 Temporal muscle | 59 Common carotid artery |
| 7 Optic nerve [cranial nerve II] | 60 Sternocleidomastoid |
| 8 Medial rectus | 61 Platysma |
| 9 Eyeball | 62 Anterior jugular vein |
| 10 Ethmoidal cells | 63 Oesophagus (Gullet) |
| 11 Dural venous sinus | 64 Sternohyoid |
| 12 Corpus callosum | 65 External jugular vein |
| 13 Telencephalon (cerebrum) | 66 Thyroid gland |
| 14 Sphenoid (sphenoidal bone) | 67 Rib |
| 15 Lateral rectus | 68 Apex of lung |
| 16 Retrobulbar fat (orbital fat body) | 69 Cervical nerves, anterior rami (ventral rami) |
| 17 Cerebellar tentorium | 70 Trachea (Windpipe) |
| 18 Fourth ventricle | 71 Rhomboid major |
| 19 Cerebellum | 72 Infraspinaus |
| 20 External acoustic meatus | 73 Subscapularis |
| 21 Mandible, condylar process | 74 Azygos vein |
| 22 Nasal septum | 75 Humerus |
| 23 Inferior nasal concha | 76 Axillary artery |
| 24 Maxilla | 77 Axillary vein |
| 25 Hard palate | 78 Intercostal muscles |
| 26 Upper lip | 79 Lung |
| 27 Occipital bone | 80 Superior vena cava |
| 28 Basilar artery | 81 Pectoralis major |
| 29 Internal carotid artery | 82 Sternum |
| 30 Longus capitis | 83 Scapula |
| 31 Lateral pterygoid | 84 Deltoid |
| 32 Maxillary sinus | 85 Brachial plexus |
| 33 Masseter | 86 Pectoralis minor |
| 34 Facial artery | 87 Aorta |
| 35 Temporal bone, mastoid process | 88 Latissimus dorsi |
| 36 Medulla oblongata (bulb) | 89 Triceps brachii |
| 37 Rectus capitis lateralis | 90 Brachial artery |
| 38 Parotid gland | 91 Brachial vein |
| 39 Pharynx | 92 Heart, left atrium |
| 40 Ramus of mandible | 93 Heart, right atrium |
| 41 Tongue | 94 Right coronary artery |
| 42 Teeth | 95 Costal cartilage |
| 43 Cerebellar falx | 96 Serratus anterior |
| 44 Vertebral artery | 97 Biceps brachii |
| 45 Internal jugular vein | 98 Left coronary artery |
| 46 Medial pterygoid | 99 Heart, left ventricle |
| 47 Vertebra, spinous process | 100 Heart, right ventricle |
| 48 Vertebra, arch | 101 Internal thoracic artery and vein |
| 49 Spinal cord | 102 Liver |
| 50 Vertebra, body | 103 Inferior vena cava |
| 51 Inferior constrictor | 104 Stomach |
| 52 Arytenoid cartilage | 105 Hepatic portal vein |
| 53 Thyroid cartilage | 106 Spleen |

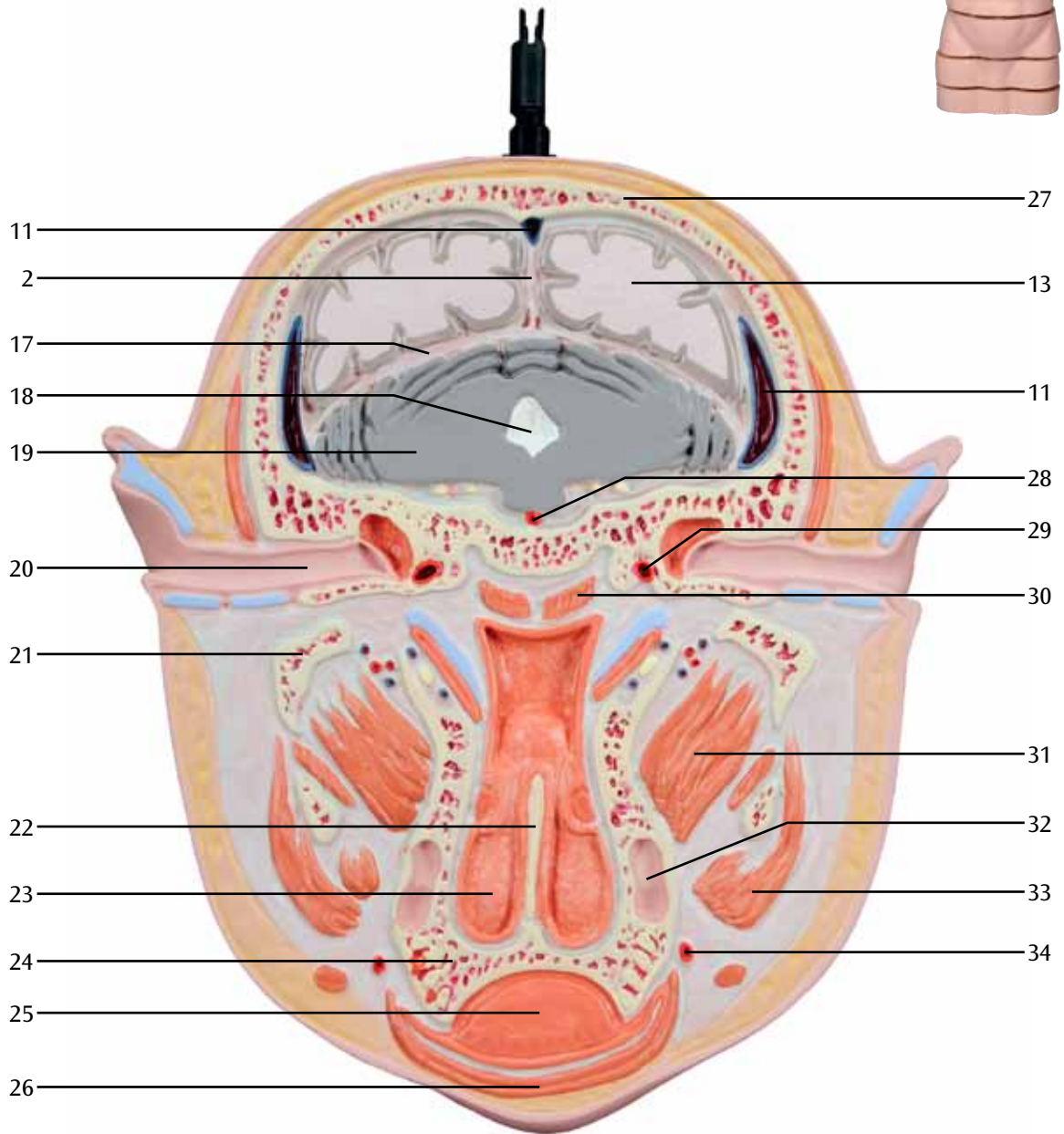
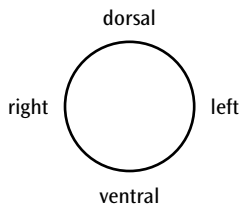
Disc-Torso Model

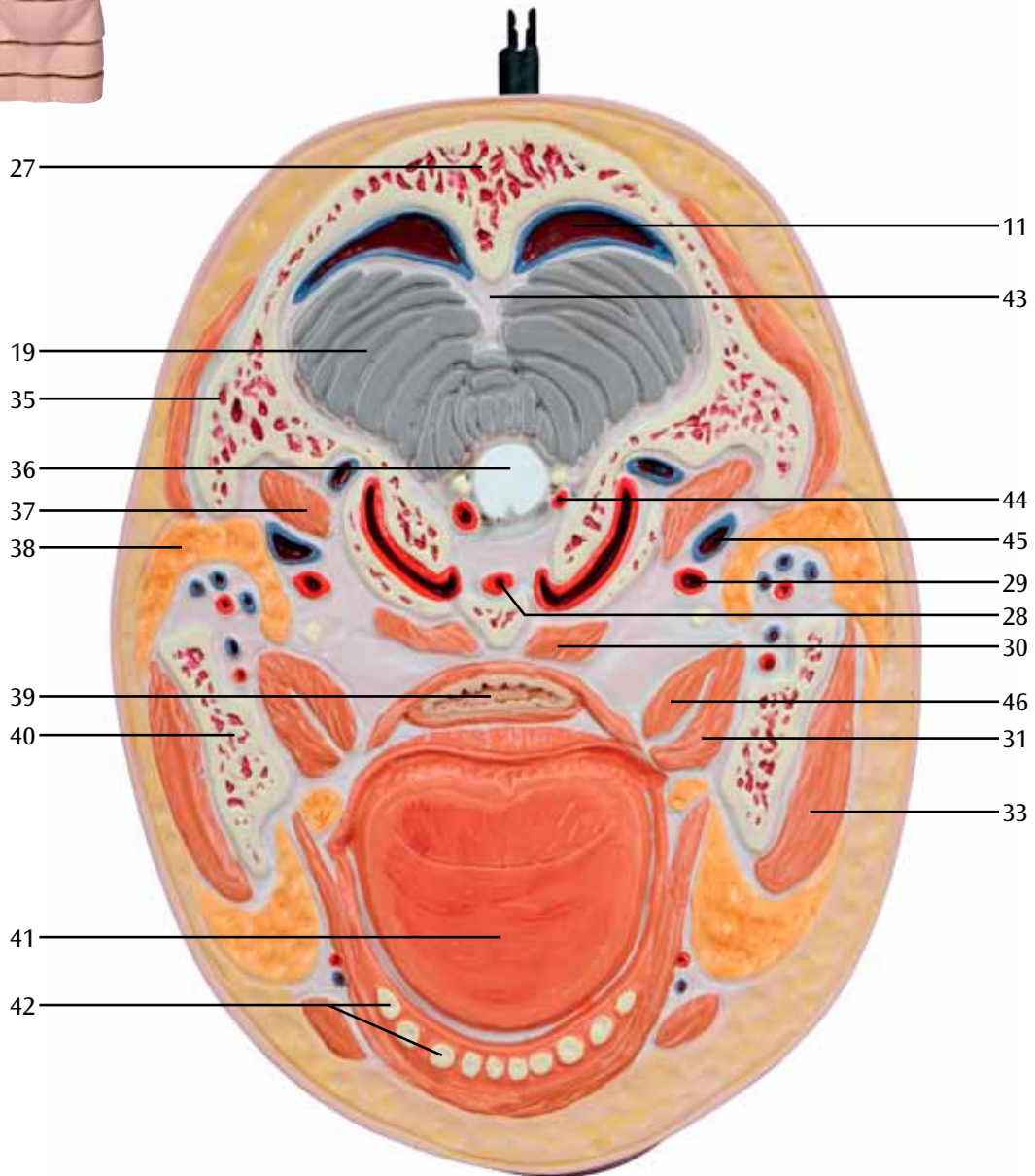
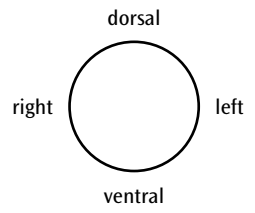
English

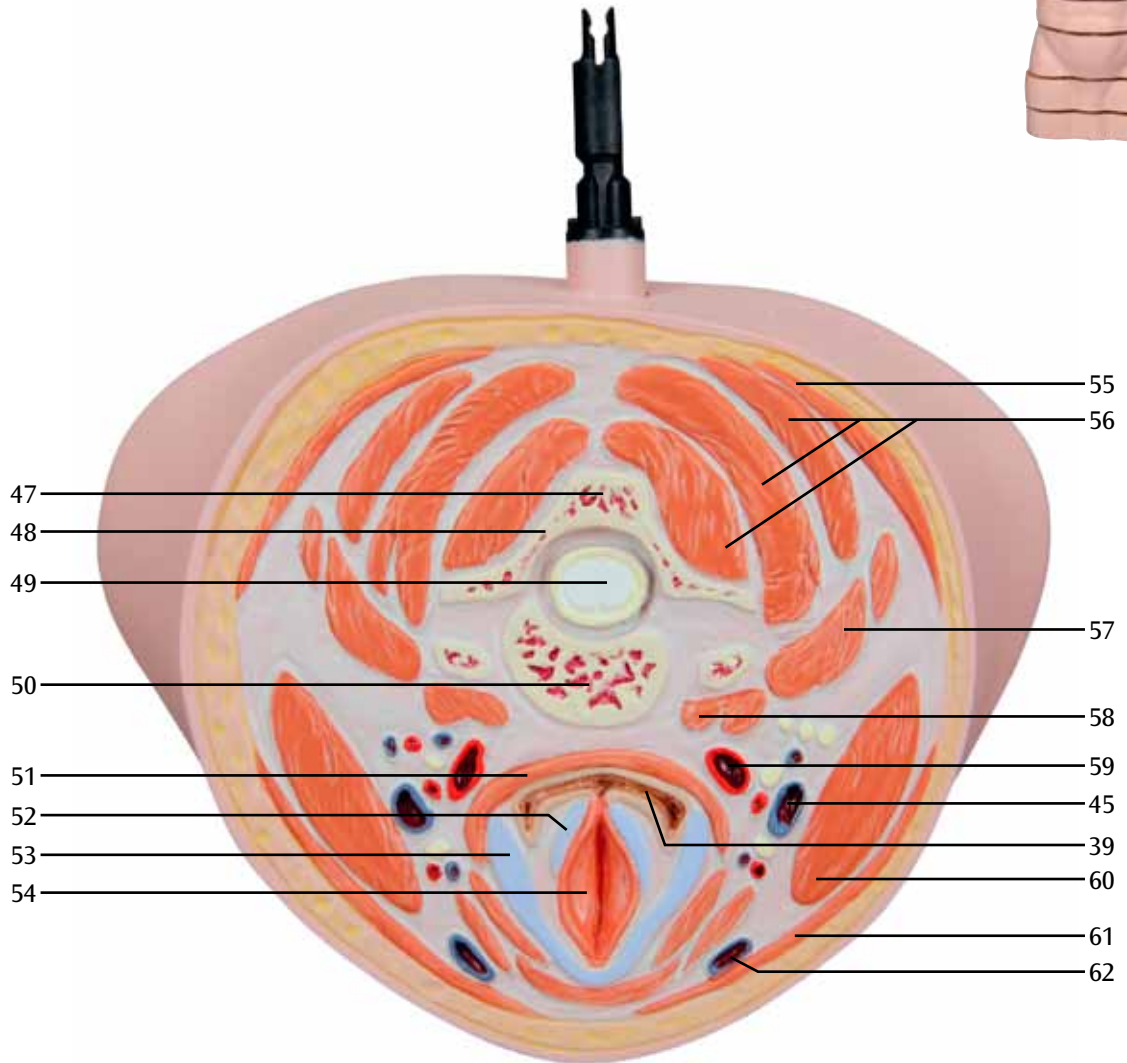
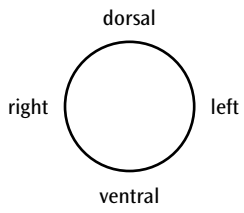
- 107 Intervertebral disc
- 108 Kidney
- 109 Gallbladder
- 110 Small intestine
- 111 Rectus abdominis
- 112 Ureter
- 113 Pancreas
- 114 Large intestine
- 115 Ilium
- 116 Gluteus medius
- 117 Gluteus maximus
- 118 Iliacus
- 119 Psoas major
- 120 Common iliac vein
- 121 Lateral abdominal muscles
- 122 Common iliac artery
- 123 Cauda equina
- 124 Coccyx
- 125 Rectum
- 126 Sciatic nerve
- 127 Ischium
- 128 Femur (thigh bone)
- 129 Tensor fasciae latae (tensor of fascia lata)
- 130 Rectus femoris
- 131 Iliopsoas
- 132 Sartorius
- 133 Femoral artery
- 134 Femoral vein
- 135 Spermatic cord
- 136 Pubic symphysis
- 137 Levator ani
- 138 Prostate
- 139 Obturator internus
- 140 Pectineus
- 141 Pubis
- 142 Anus
- 143 Semitendinosus
- 144 Male urethra
- 145 Adductor muscles
- 146 Vasti muscles
- 147 Corpora cavernosa penis

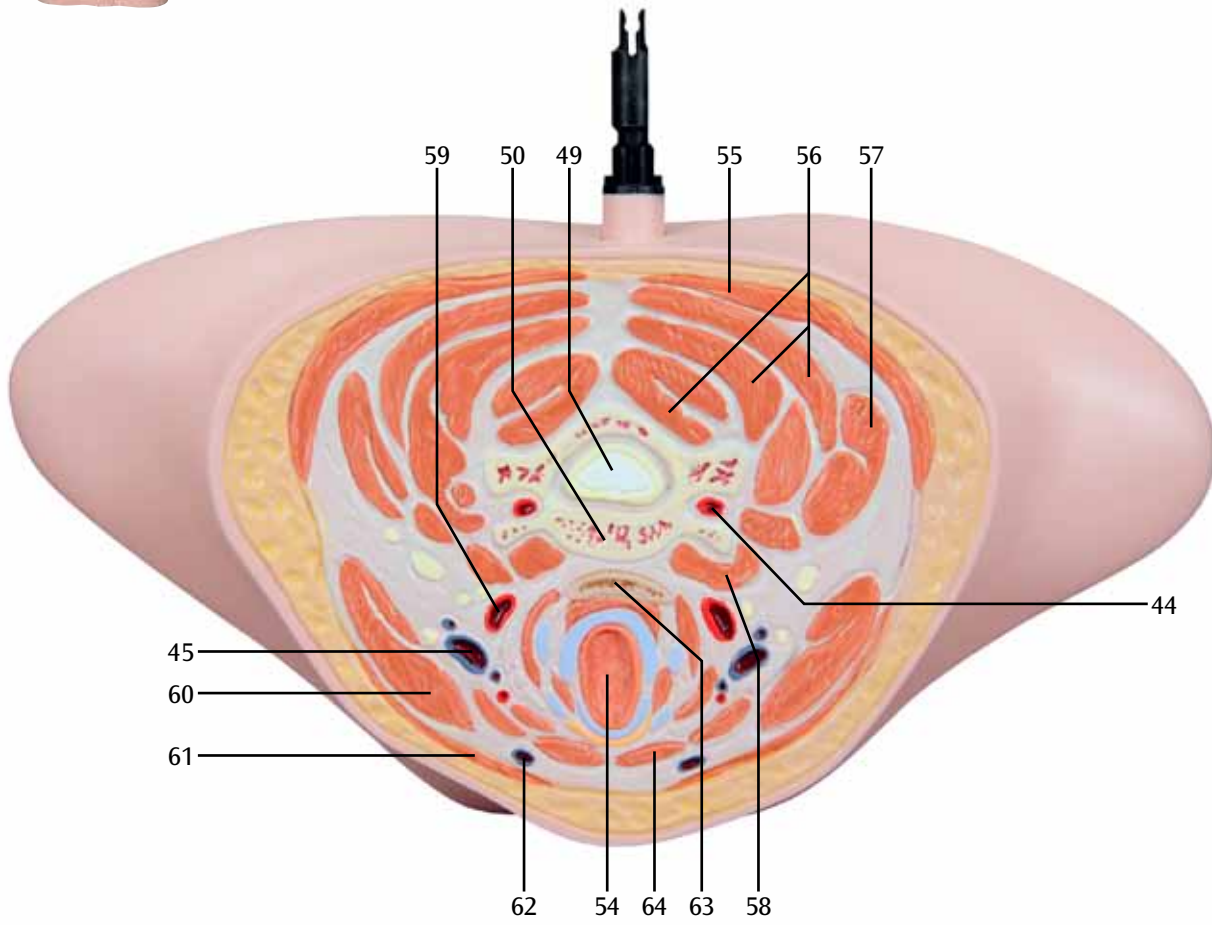
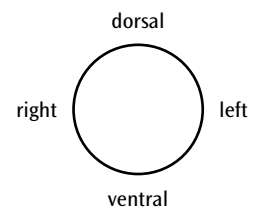


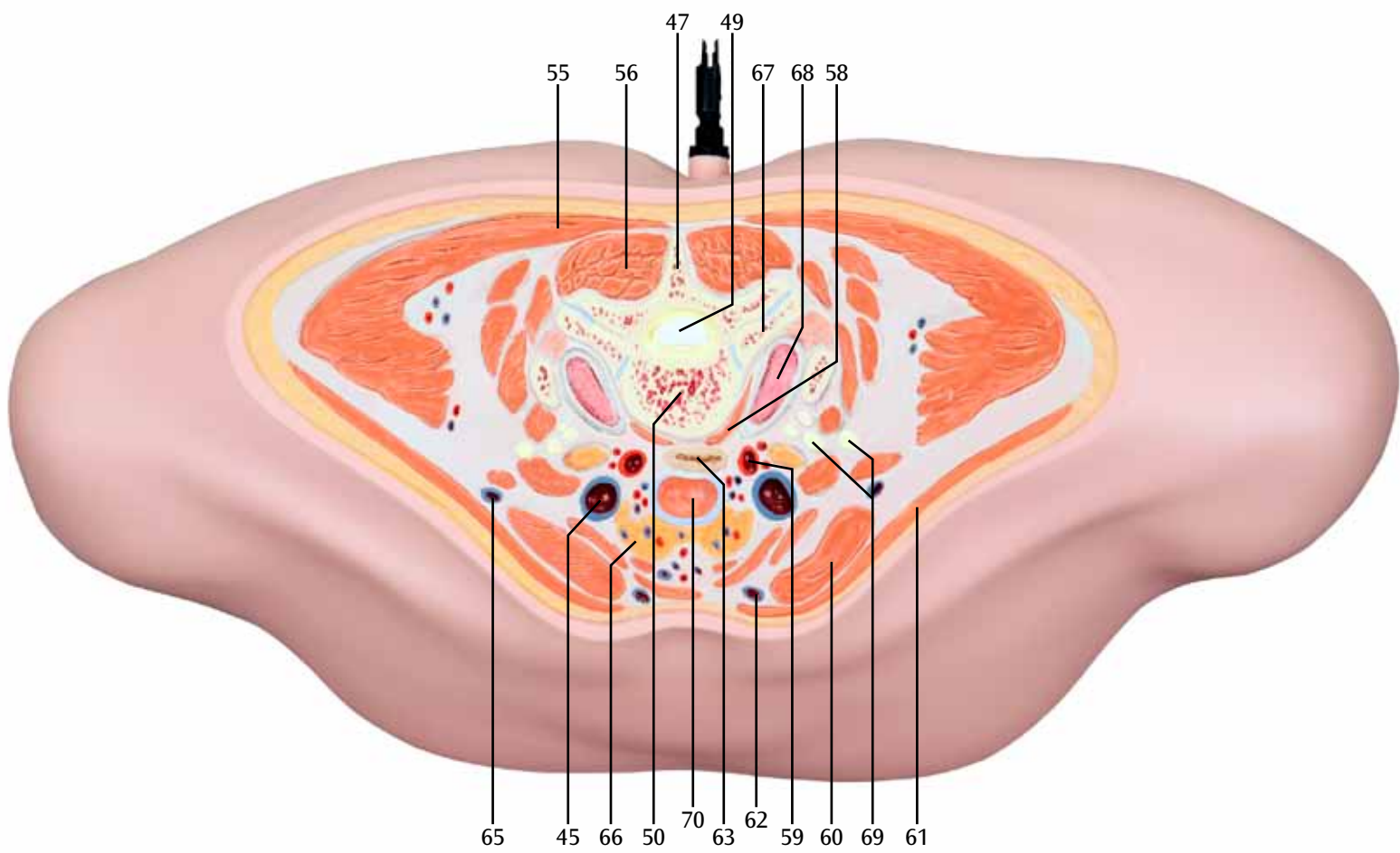
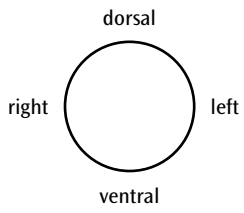


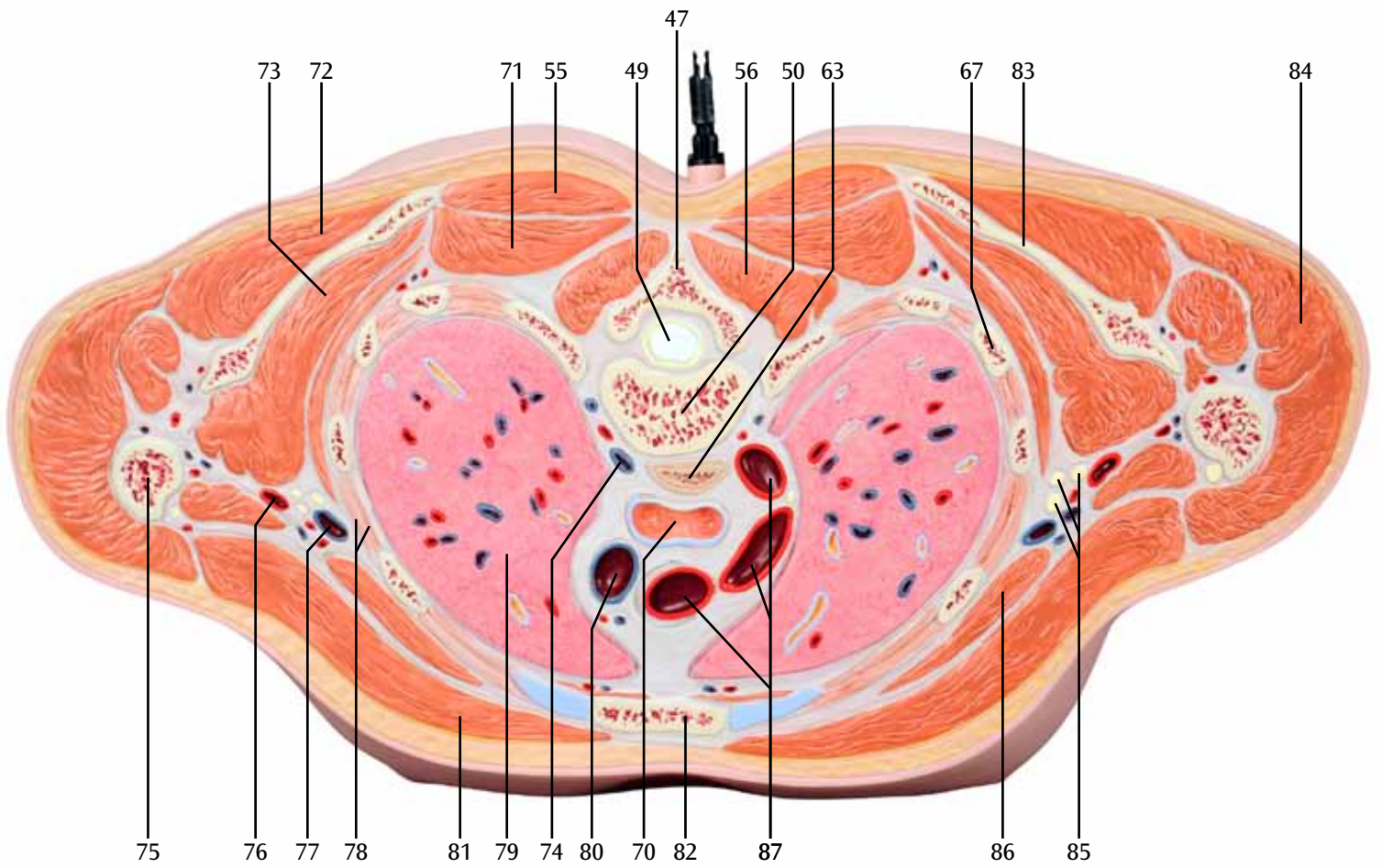
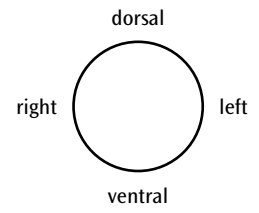


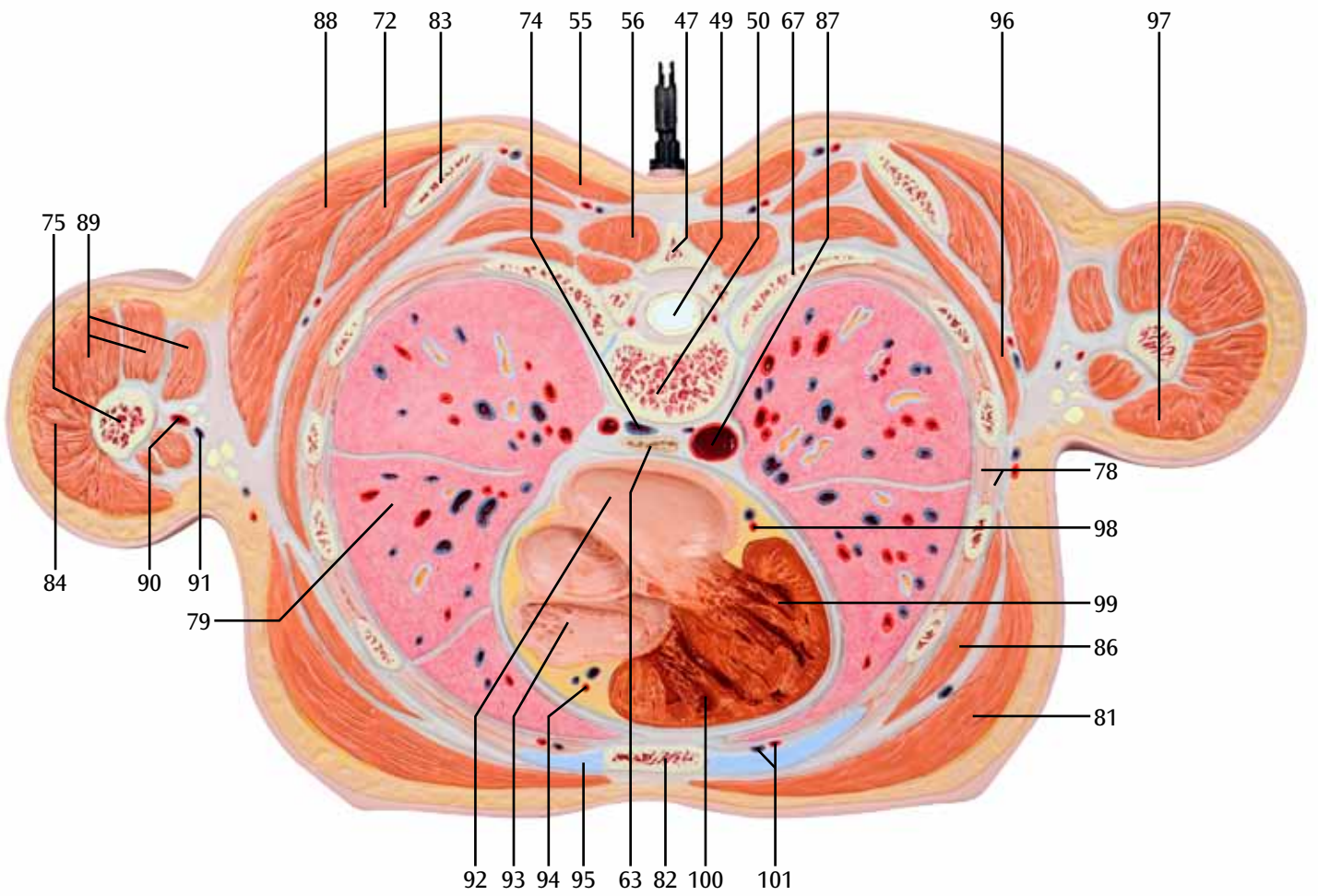
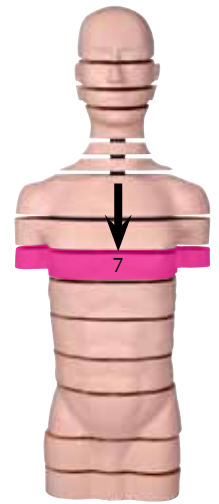
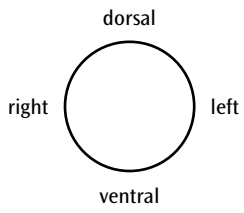


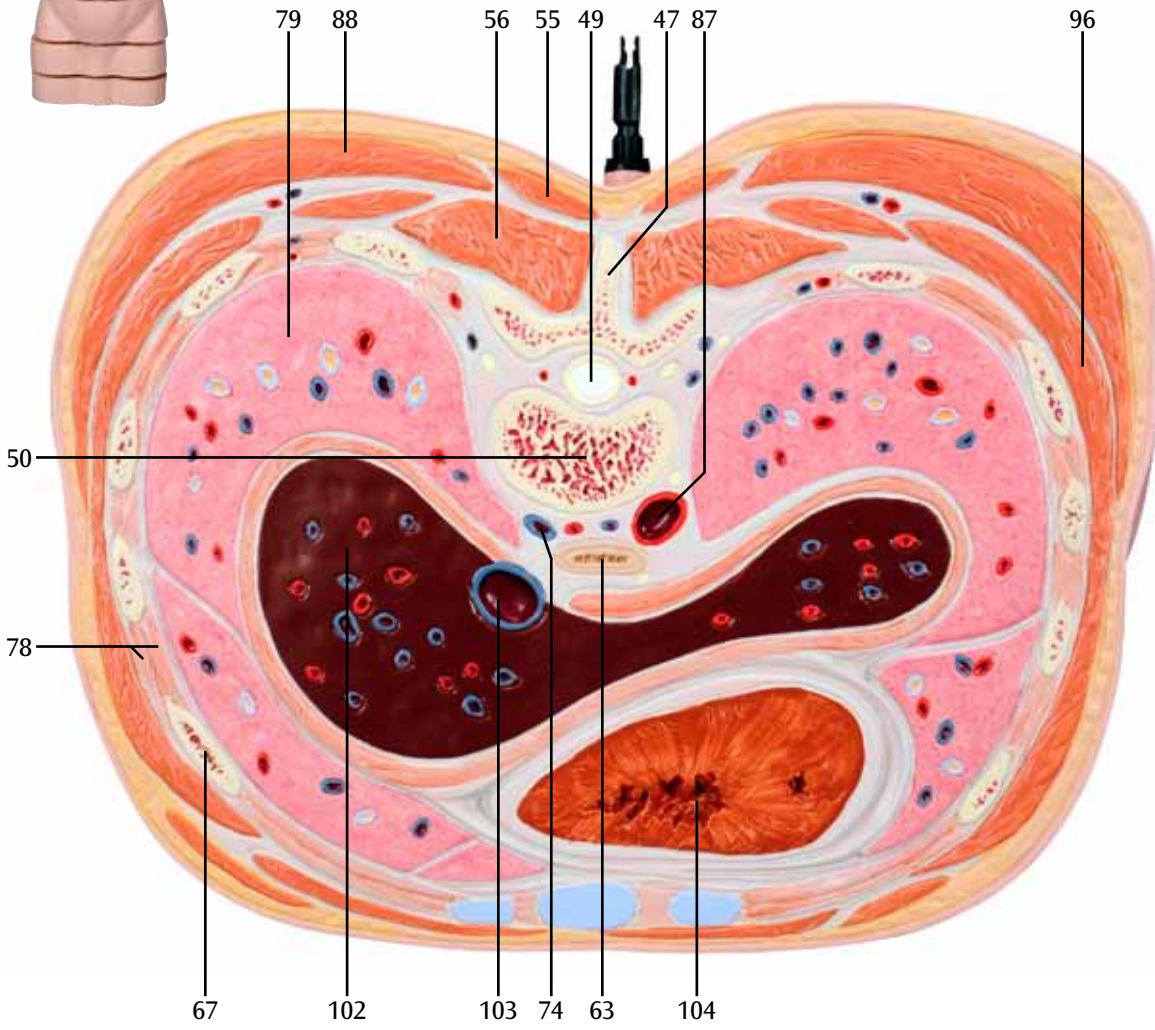
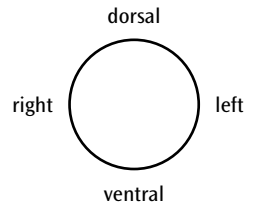
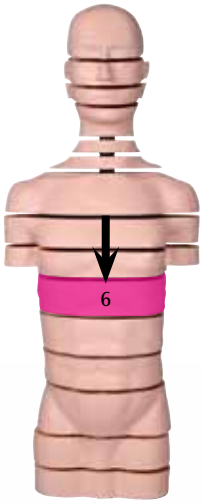


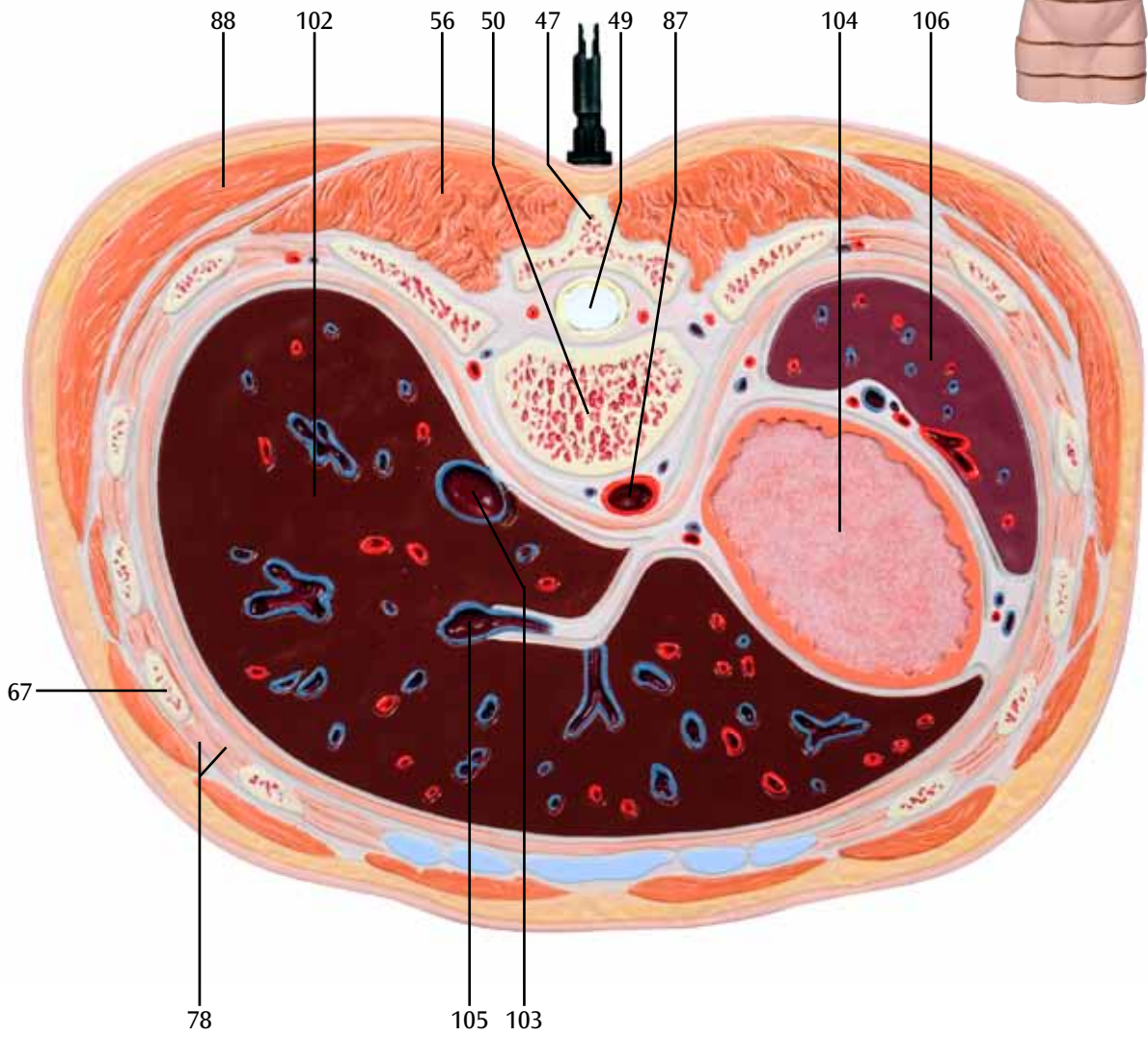
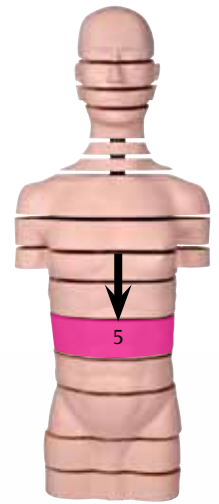
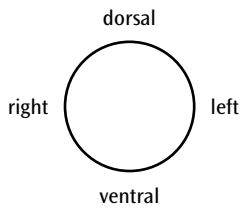


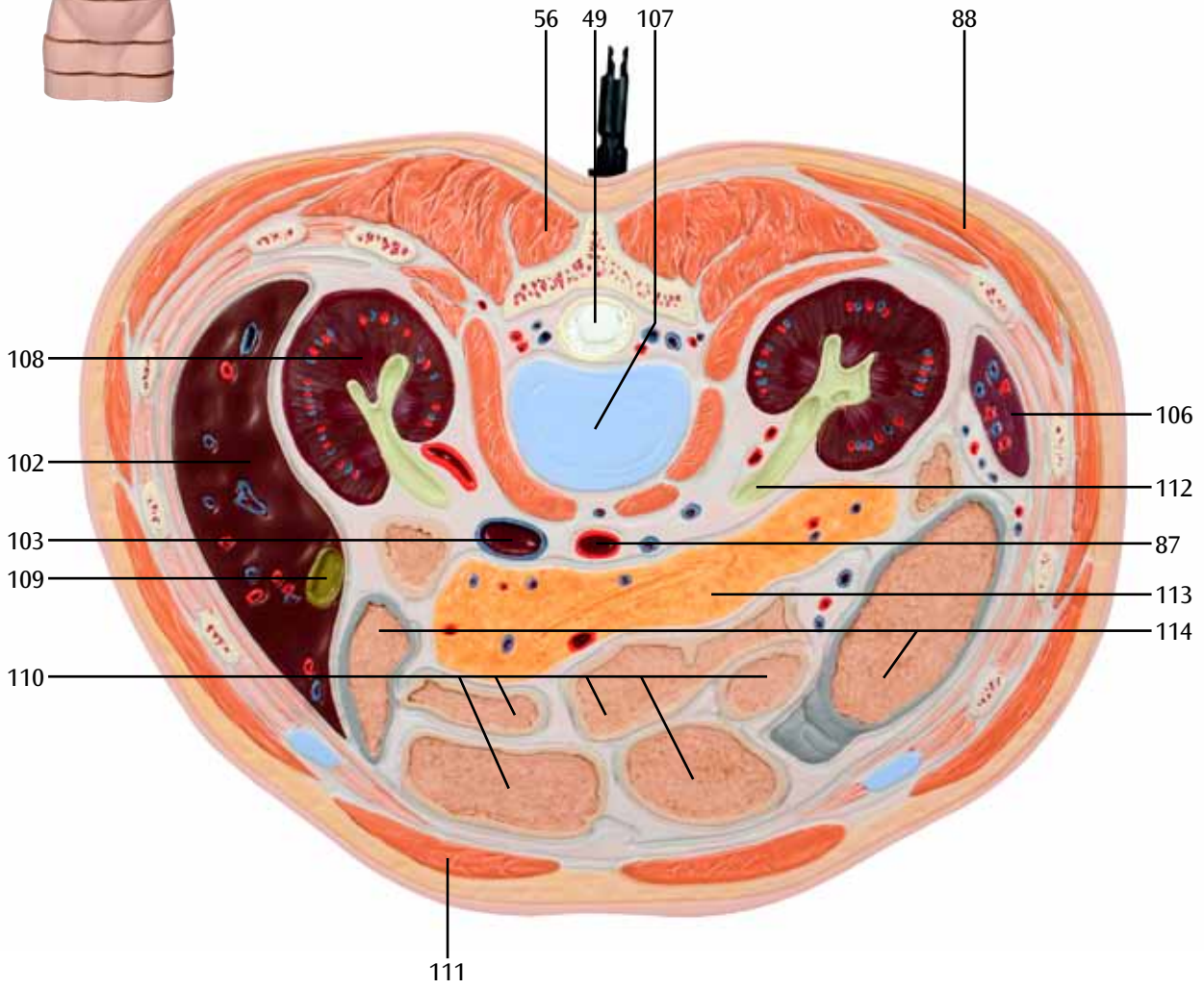
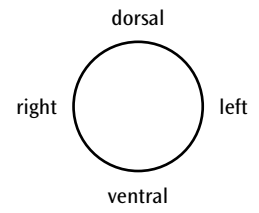
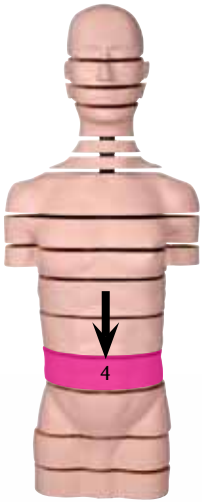


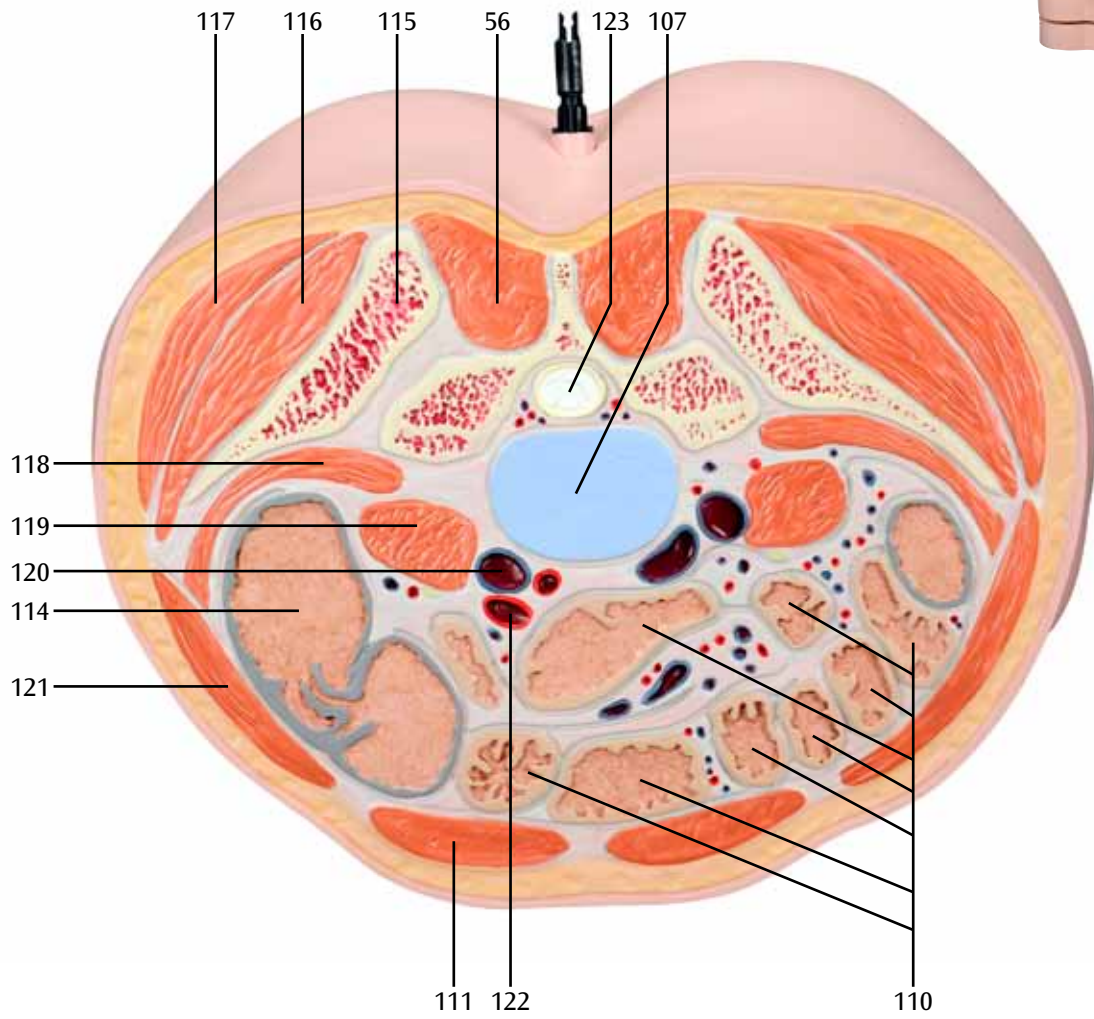
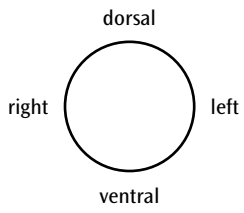


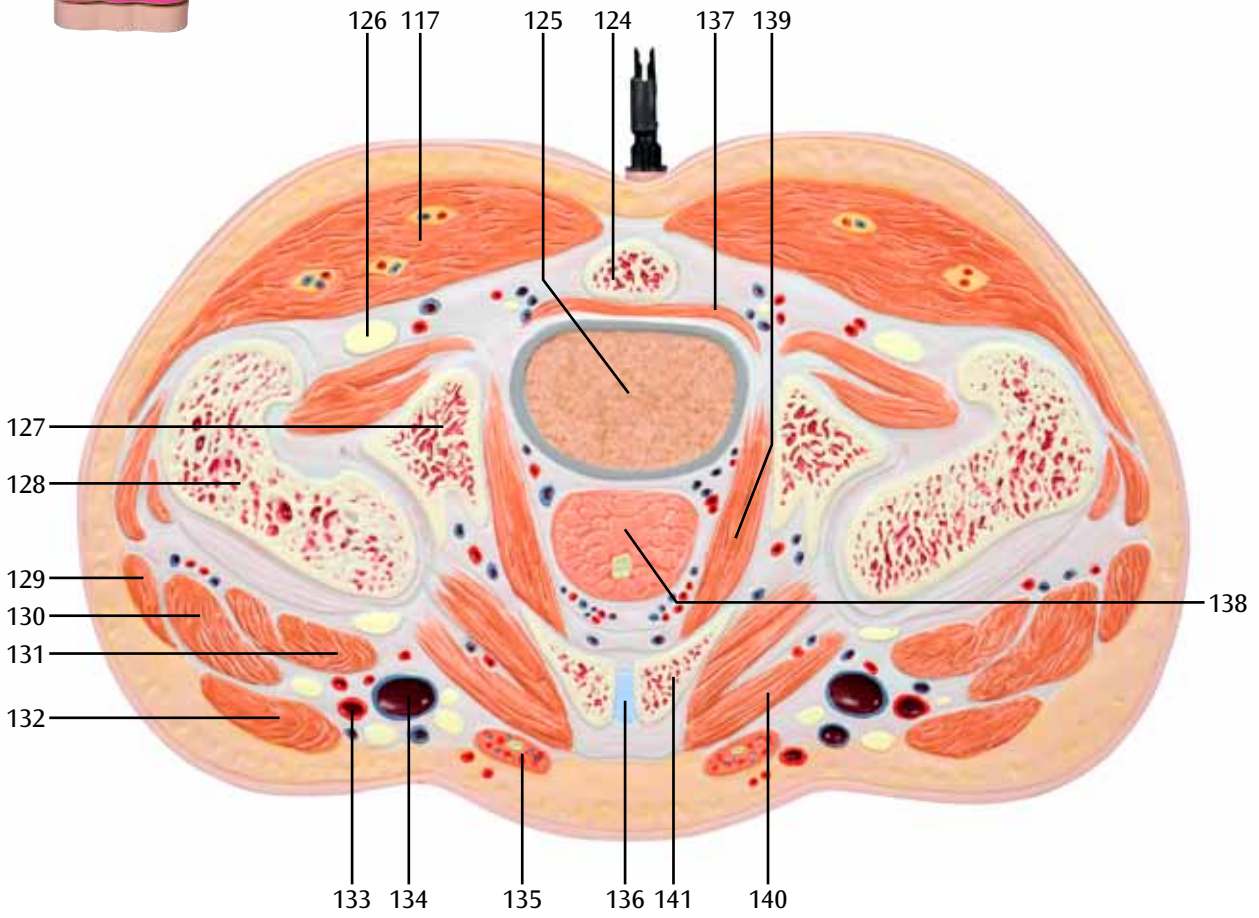
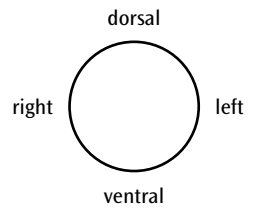


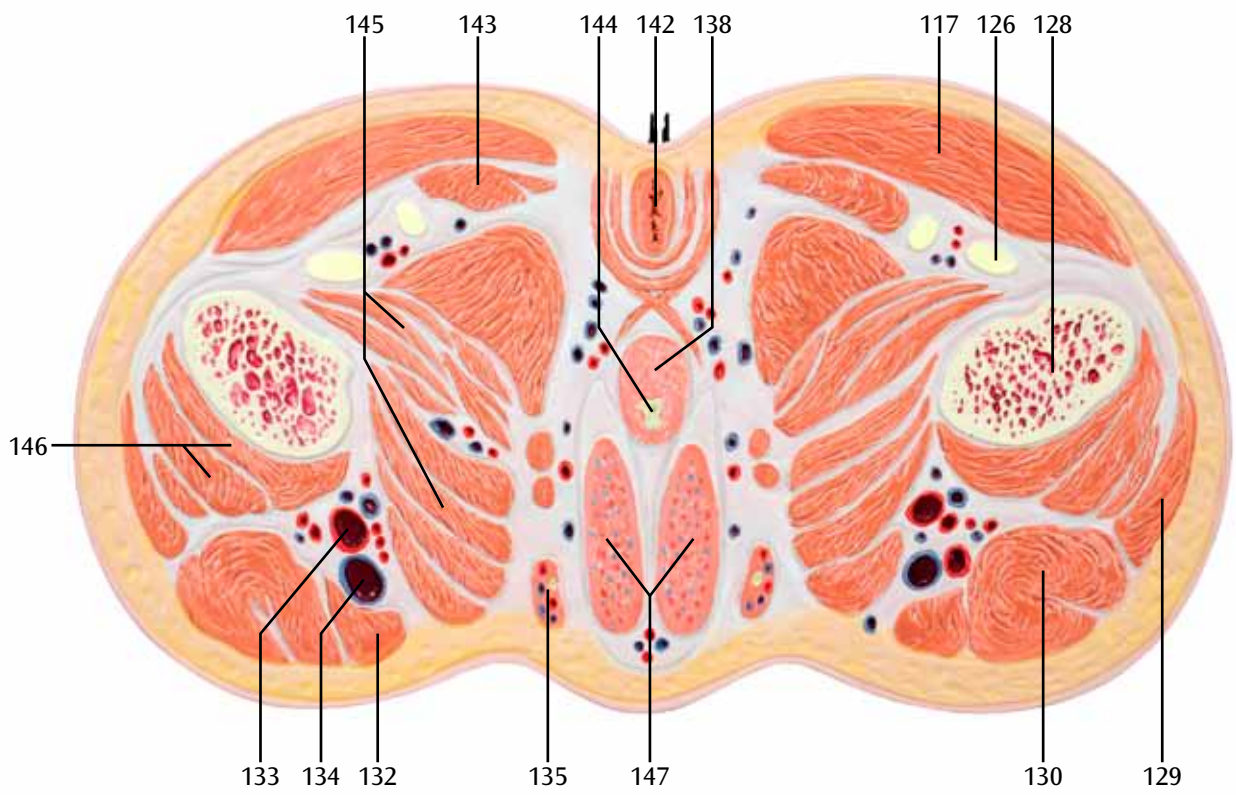
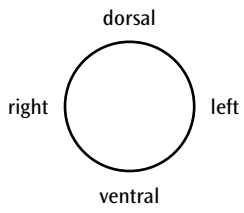














3B Scientific

© Copyright 2011 / 2013 / 2014 for instruction manual and design
of product: 3B Scientific GmbH, Germany