



# Model 7150 Wheelchair Scale Ramps, Ramp Straps, and Ramp Guide Rails Installation Instructions

## UNPACKING

Before starting to assemble, please unpack and remove all wrappings and fillers. Carton contains:

Qty.	Item Description
2	7150 Ramp Weldments
2	Ramp Straps
12	.25-20 X 0.438 in Flat-Head Socket Cap Screw Zinc Plated
6	10-24 X 0.375 in Round-Head Machine-Screw
1	5/32 in. Short Hex Key
1	0.5 ml Packet High Strength Thread Locker

## RAMP INSTALLATION



**IMPORTANT! Ensure the column is fully locked in the storage/transport position before proceeding.**

Refer to Figures No. 1 and 2, then follow the steps below to install the ramps.

1. Lift the scale and place the platform on its side in the transport position. Have an assistant support the platform while the ramps are being installed.

2. Attach each ramp as follows:

- Begin with the top rubber mount. Apply thread locker to the first screw. While holding the ramp against the top rubber mount, hand-thread the screw into the mount (See Figure No. 1).
- Apply thread locker to the second screw. While holding the ramp against the bottom rubber mount, hand-thread the screw into the mount.
- Using the supplied 5/32 in. short hex key, tighten both screws securely (See Figure No. 2).

**NOTE:** When installing screws into the rubber mount, be careful not to over-tighten.

3. Repeat Step 2 for the ramp on the opposite side of the platform.

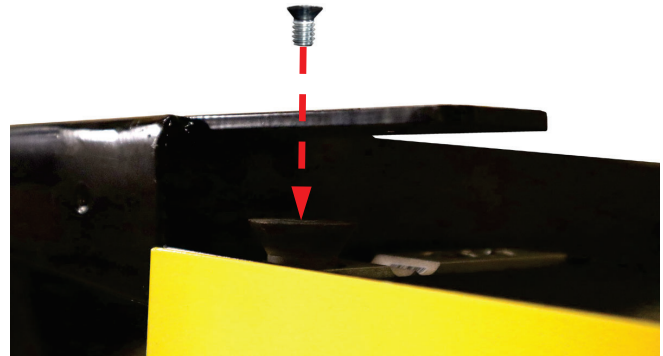


Figure No. 1

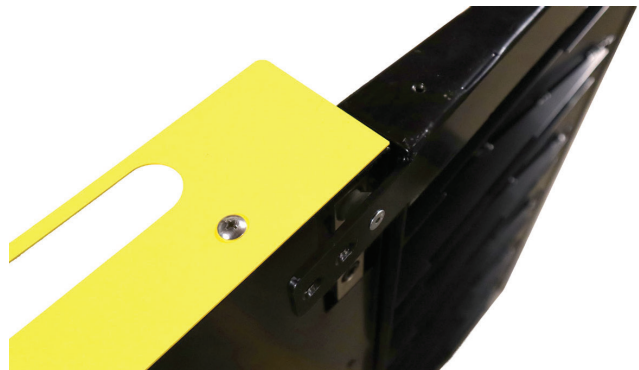


Figure No. 2

DETECTO



# Model 7150 Wheelchair Scale Ramps, Ramp Straps, and Ramp Guide Rails Installation Instructions

## RAMP STRAP INSTALLATION

Refer to Figures No. 3 and 4, then follow the steps below to install the ramp straps.

1. Attach the first end of a ramp strap:
  - Position the flat side of the ramp strap beneath the extended mounting tab on the ramp, aligning the strap with the two mounting holes.
  - Apply thread locker to the first screw. While holding the strap in place, hand-thread the screw through the mounting tab and into the strap (See Figure No. 3).
  - Apply thread locker to the second screw. Hand-thread it through the mounting tab and into the strap.
  - Using the supplied 5/32 in. short hex key, tighten both screws securely (See Figure No. 4).
2. Attach the opposite end of the same ramp strap to the platform using the same procedure.
3. Repeat Steps 1 and 2 for the ramp strap on the opposite side of the platform.

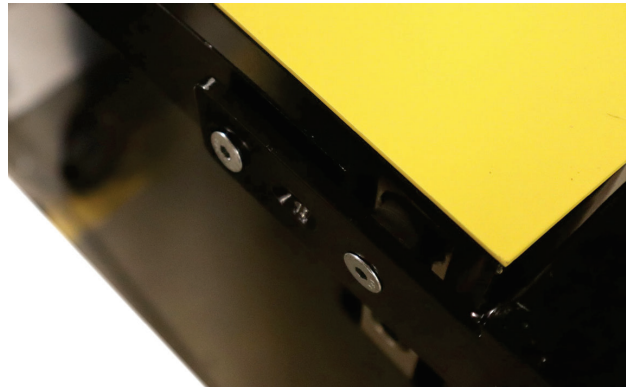


Figure No. 3



Figure No. 4

## RAMP GUIDE RAIL INSTALLATION

### TOOLS REQUIRED

- No. 2 Philips screwdriver (power screwdriver recommended)

Refer to Figure No. 5, then follow the steps below to install the ramp guide rails.

1. Place the platform on the floor in the **storage position**.
2. Position a ramp guide rail against one side of the ramp. Install two round-head screws through the guide rail and into the ramp, then tighten the screws securely (see Figure No. 5).
3. Repeat Step 2 to install the ramp guide rail on the opposite side of the ramp.
4. Repeat Steps 2 and 3 to install the ramp guide rails on the ramp at the opposite end of the platform.

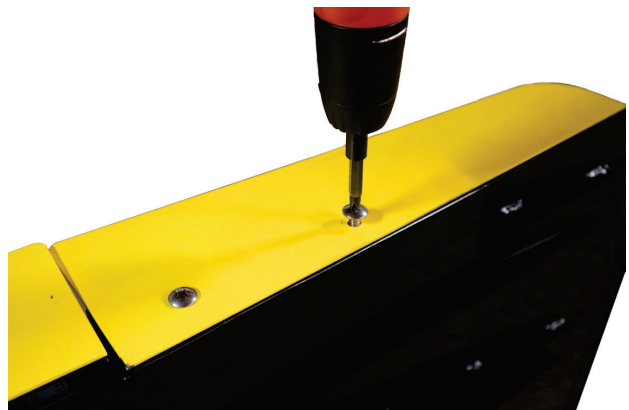


Figure No. 5