



SPEC SHEET

KoolMore -25 C Upright Medical Freezer For Pharmacy / Laboratory With Removable Drawers, Dynamic Freeze, LED Display, Multi-Level Emergency Alarms and Precise Temperature Control, 10.8 Cu. Ft.

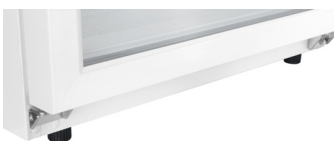
Model:KM-PHF-10C

FEATURES

- Spacious 11 Cu. Ft. Capacity: Offers seven removable drawers for organized storage of sensitive samples.
- Superior Insulation: Features high-density foam and magnetic door for energy efficiency.
- Comprehensive Alarms: Monitors temperature, power, door status, and ambient conditions.
- Advanced Data Logging: USB port enables easy data export for remote monitoring compatibility.
- Precise Temperature Control: Maintains accuracy within $\pm 0.1^{\circ}\text{C}$ from -25°C to -10°C .
- Reliable Backup: 20-hour rechargeable battery for alarms and logging during outages.
- Fast Cooling: Reaches -25°C in 65.5 minutes, ideal for quick cooling needs.
- Durable Design: Steel and foam construction for commercial use.
- Quiet Operation: Runs at 60 dB, suitable for professional environments.
- Efficient Door Closure: Magnetic seal and small angle closure for energy conservation.
- Mobility: Equipped with casters and adjustable legs for easy movement and stability.
- Certifications & Warranty: UL certified with a 1-year warranty on parts and labor.



CLOSE UP IMAGES



TECHNICAL SPECS

Dimensions

Length	27.17
Width	27.56
Height	75.59
Interior Depth	17.72
Interior Width	21.26
Interior Height	50.28
Depth Excluding Handles	25
Depth Including Handles	27.17
Depth Less Door	22.64
Depth With Door Open 90 Degrees	49.76
Height To Top Of Door Hinge In	69.45
Height To Top Of Case In	75.59
Minimum Back Air Clearance In	7.87
Minimum Side Air Clearance In	7.87
Power Cord Length	67

Capacity

Weight Lbs	224
Gross Cubic Feet	11
Net Cubic Feet	10.8
Individual Shelf Capacity	38 lbs.

Features & Materials

Door Material	Steel and Foam
Color Finish	Grey
Color Door Handles	Silver
Interior Lights	No
Stackable	No
Casters	4
Legs Adjustable	2 Adjustable Legs, <1 in.
Number Of Feet	2
Defrost Type	Manual
Refrigerant Type	R-290
Cooling Unit Type	Static
Compressor Location	Bottom
Control Type	Digital
Digital LED Display	No
Digital Temperature Control	Yes
Number Of Doors	1
Door Style	Swing
Self Closing Door	No
Number Of Shelves	7
Shelves Adjustable	No
Temperature Range	-13-14 F
Ambient Temperature Range	50-90 F
Temperature Pull Down Time	-13 F in 65.5 min.
Temperature Variation	<3.9 C
Top Cooling Technology	No
Noise	60 db

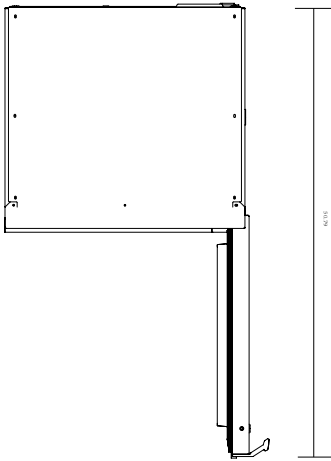
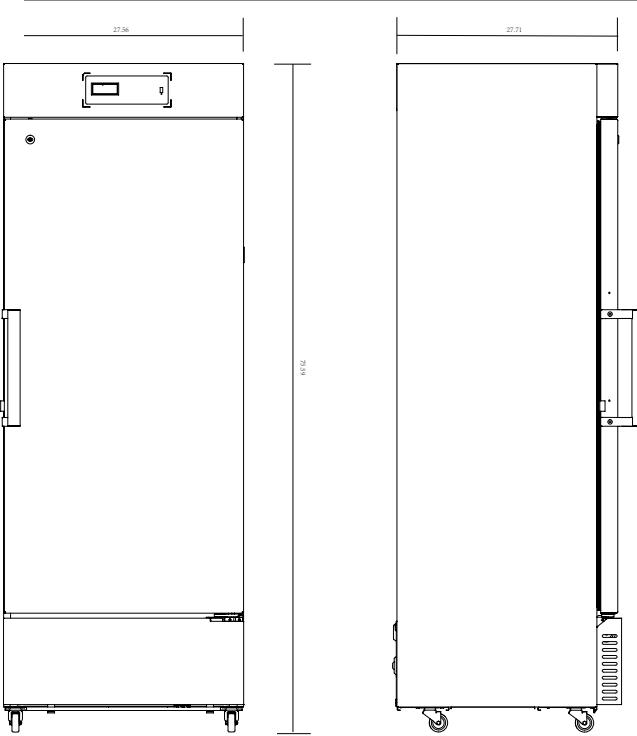
Battery & Alarms

Backup Battery Hours	20
Backup Battery Type	Built-in Cell Battery
Backup Battery Replaceable	No
Backup Battery Rechargeable	Yes
Data Logging	Yes
USB Port	Yes
Safety Lock	Yes
Low Temp Alarm	Yes
High Temp Alarm	Yes
Ambient Temp Alarm	Yes
Power Failure Alarm	Yes
Sensor Failure Alarm	Yes
Door Ajar Alarm	Yes
Remote Alarm	Yes
Build In Air Duct	No
Sensor Count	2

Electric & Certification

Horsepower	0.5
Amps	3
Hertz	60
Phase	1
Plug Type	NEMA 5-15P
Voltage	115
Wattage	280
Certifications	UL Listed for Safety

Plan View



CERTIFICATIONS

