



# SPEC SHEET

## KoolMore -86 C Undercounter Ultra Low Temp Stackable Medical Freezer with Multi Level Emergency Alarms, LED Display and 9,000 2ml Vial / 4 cu. ft. Storage Capacity

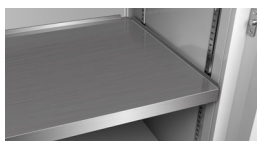
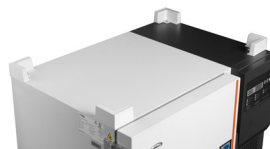
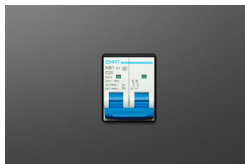
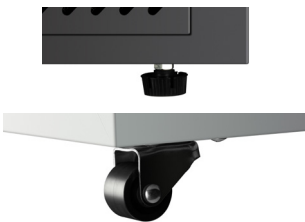
Model: KM-PHF-4CUL

### FEATURES

- Compact Design with Large Capacity: 4 cu. ft. under-counter unit, stores up to 9,000 2ml vials, stackable for increased efficiency.
- Advanced Insulation and Self-Closing Door: Vacuum-insulated panels, self-closing door for superior thermal efficiency and easy access.
- Ultra-Low Temperature Range: Operates -86°C to -40°C, achieves -81°C in 3 hours for sensitive material storage.
- Digital Temperature Control: Precise digital microcontroller, displays in Celsius with  $\pm 0.1^\circ\text{C}$  accuracy on LED for ultra-low temperature management.
- Safety Alarms and Security: Alarms for power, temperature, door, and sensor issues; includes a lock for secure storage.
- Backup Battery: 52-hour battery backup for alarms and data logging, with USB data transfer.
- Stackable: Comes with stacking brackets and is able to stack one more unit on top of it.
- Durable Shelving: Adjustable stainless-steel shelves with 108 lbs. capacity for versatile storage options.
- Remote Monitoring Ready: Compatible with remote systems for tracking and compliance.
- Quiet and Low-Maintenance: Operates at 58 dB, manual defrost for easy upkeep.
- Dual Compartment Design: One outer door with two inner compartments for better temperature control.
- UL Certified with Warranty: Meets UL safety standards, comes with a 1-year warranty for parts and labor.



### CLOSE UP IMAGES



# TECHNICAL SPECS

## Dimensions

Length	37.6
Width	26.57
Height	32.09
Interior Depth	17.13
Interior Width	17.32
Interior Height	23.23
Depth Excluding Handles	26.57
Depth Including Handles	26.57
Depth Less Door	22.05
Depth With Door Open 90 Degrees	46.46
Height To Top Of Door Hinge In	32.09
Height To Top Of Case In	32.09
Minimum Back Air Clearance In	8 In.
Minimum Side Air Clearance In	8 In.
Power Cord Length	67

## Capacity

Weight Lbs	248
Gross Cubic Feet	4
Net Cubic Feet	3.8
Individual Shelf Capacity	108 lbs.

## Features & Materials

Door Material	Steel, VIP Insulation and PCM
Color Finish	White
Color Door Handles	Black
Interior Lights	No
Stackable	Yes, Can Stack 1 Unit on Top
Casters	2
Legs Adjustable	yes
Number Of Feet	2
Defrost Type	Manual
Refrigerant Type	Environmentally Friendly Refrigerants
Cooling Unit Type	Static
Compressor Location	Right Side
Control Type	Digital
Digital LED Display	Yes
Digital Temperature Control	Yes
Number Of Doors	1 (2 Inner)
Door Style	Swing
Self Closing Door	No
Number Of Shelves	1
Shelves Adjustable	Yes
Temperature Range	-123- -40 F
Ambient Temperature Range	61-90 F
Temperature Pull Down Time	-114F in 3 Hours
Temperature Variation	Within 3 C
Top Cooling Technology	
Noise	58 db

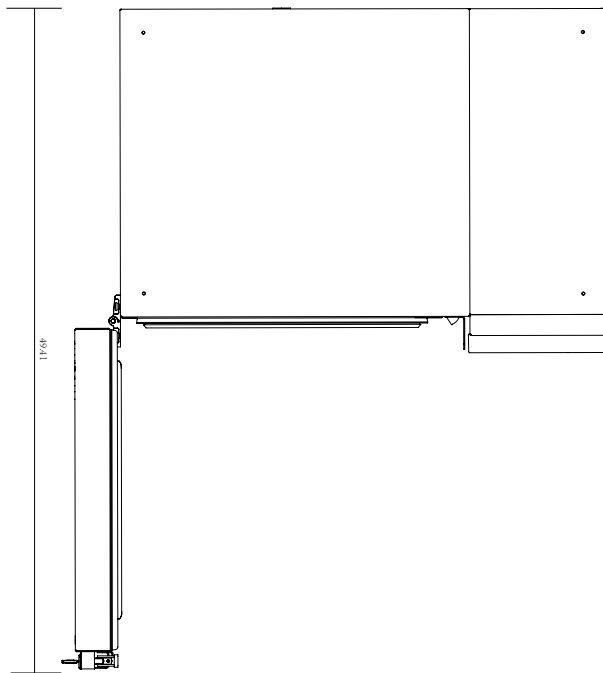
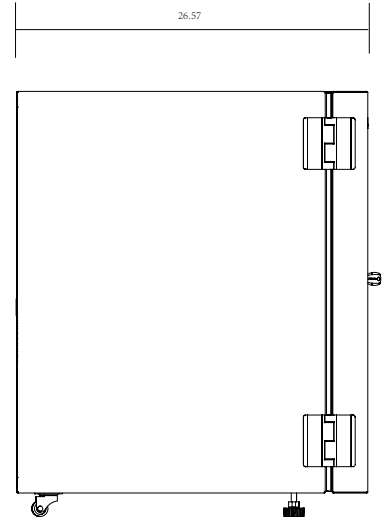
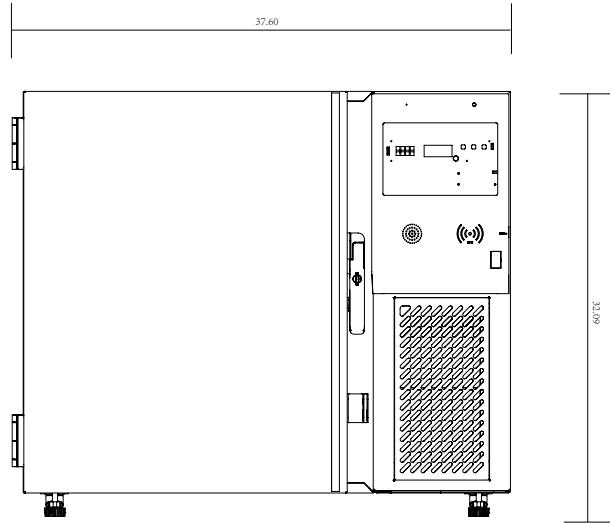
## Battery & Alarms

Backup Battery Hours	52
Backup Battery Type	12V Lead-acid battery
Backup Battery Replaceable	Yes
Backup Battery Rechargeable	Yes
Data Logging	Yes
USB Port	Yes
Safety Lock	Yes
Low Temp Alarm	Yes
High Temp Alarm	Yes
Ambient Temp Alarm	Yes
Power Failure Alarm	Yes
Sensor Failure Alarm	Yes
Door Ajar Alarm	Yes
Remote Alarm	Yes
Build In Air Duct	No
Sensor Count	3

## Electric & Certification

Horsepower	0.8
Amps	8
Hertz	60
Phase	1
Plug Type	NEMA 5-15P
Voltage	115
Wattage	550
Certifications	UL Listed for Safety

# Plan View



## CERTIFICATIONS

