

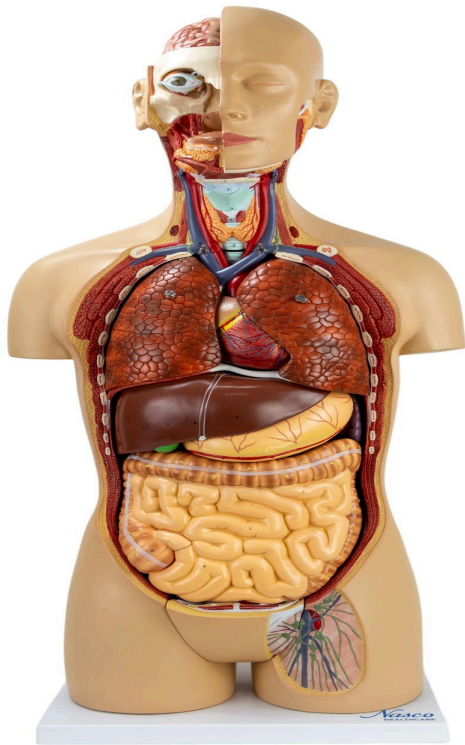
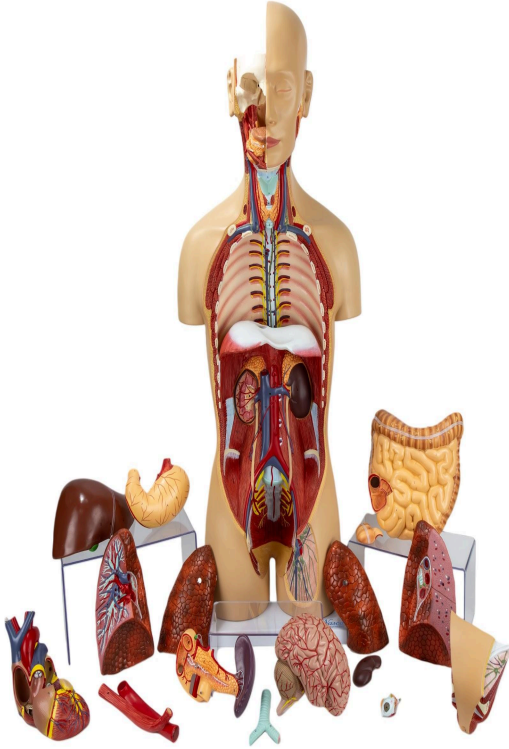


**MG31998 | CLASSIC UNISEX HUMAN TORSO,
18 PARTS**



Nasco

HEALTHCARE





This life-size, 18-part anatomical model of the entire body offers an extremely realistic and detailed reproduction of human internal organs. Designed for in-depth understanding, the head is sectioned to expose half of the brain, while the neck is meticulously dissected to reveal muscular, glandular, vascular, and neural structures. The thorax and abdomen are completely open, providing an unobstructed view of the internal organs and their associations.

Applications:

Ideal for higher education institutions, medical clinics, anatomy laboratories, and healthcare professionals seeking an advanced educational tool. It is particularly suitable for in-depth study of human anatomy, physiology, and pathophysiology, assisting in the comparative analysis of structures and the development of diagnostic skills.

Technical Differentiators:

The model features a detailed and life-size reproduction, with 18 removable parts that allow for the thorough exploration of various regions of the body. Includes: half of the brain (divided to expose fissures, internal structures, and vessels), eye with optic nerve and extraocular muscles, trachea, descending thoracic aorta and esophagus, lungs (2 parts each, showing bronchial tree and vasculature), liver with gallbladder, half of a kidney (sectioned for internal structure and vessels), heart (2 parts, showing atria, ventricles,



valves, and ventricular wall), stomach, pancreas, duodenum, and spleen (with vessels and ducts), small and large intestine (with removable window in the cecal region), and removable covering in the groin area. All anatomical structures are numbered and identified in an informative leaflet that accompanies the product, ensuring accuracy and ease of learning.

3D Technology and Augmented Reality:

Our anatomical models offer an innovative visual complement through informative cards that activate 3D models viewable in augmented reality (AR). This exclusive interactive platform stimulates learning, allowing for comparative analysis of anatomical structures and offering opportunities for continuing education in anatomy, physiology, and pathophysiology.

Technical Specifications:

- * Scale: Life-size
- * Number of parts: 18
- * Material: High-quality resin
- * Features: Removable parts, numbered, includes informative leaflet.

Main Structures:

BRAIN: The brain is the control center of the nervous system, responsible for cognitive functions such as thought, memory, language, and also for the control of movements and sensations. Divided into lobes and hemispheres, its complex structure houses billions of neurons that communicate through synapses, forming neural networks that orchestrate all bodily and mental activities.

HEART: The heart is the hollow muscular organ responsible for pumping oxygen-rich blood and nutrients throughout the body, and deoxygenated blood to the lungs. It has four chambers (two atria and two ventricles) and a valve system that ensures unidirectional blood flow, maintaining systemic and pulmonary circulation.

LUNGS: The lungs are the main organs of the respiratory system, located in the thoracic cavity. Their primary function is gas exchange, where oxygen from inhaled air is transferred to the blood, and carbon dioxide, a waste product, is removed from the blood and exhaled. They are divided into lobes and have a vast network of bronchi, bronchioles, and alveoli to maximize the surface area for gas exchange.

LIVER: The liver is the largest gland in the human body and performs vital functions, including metabolizing nutrients, detoxifying harmful substances, producing bile for fat digestion, synthesizing plasma proteins, and storing glycogen and vitamins. It is located in the upper right quadrant of the abdomen, below the diaphragm.

KIDNEY: The kidneys are bean-shaped organs that are part of the urinary system. Their main function is to filter the blood to remove metabolic waste products, excess salts, and



water, forming urine. They play a crucial role in regulating blood pressure, producing hormones, and maintaining the body's acid-base and electrolyte balance.

Abdominal aorta: The abdominal aorta is the largest artery in the abdomen, being the continuation of the thoracic aorta after passing through the diaphragm. It extends to the level of the fourth lumbar vertebra, where it divides into the common iliac arteries, and is responsible for supplying oxygenated blood to the abdominal organs and lower limbs through its various branches.

Medulla oblongata: The medulla oblongata is the lowermost part of the brainstem, connecting the pons to the spinal cord. It is a vital structure that contains control centers for essential autonomic functions such as breathing, heart rate, blood pressure, swallowing reflexes, coughing, and vomiting, and is also an important passage center for ascending and descending nerve pathways.

Thyroid gland: The thyroid gland is a butterfly-shaped endocrine gland located in the anterior part of the neck, below the thyroid cartilage. It produces thyroid hormones (T3 and T4) that regulate the body's metabolism, growth, and development, and calcitonin, which helps regulate blood calcium levels.

Pancreatic duct: The pancreatic duct, also known as the duct of Wirsung, is the main channel that transports the digestive enzymes produced by the exocrine pancreas to the duodenum. It joins the common bile duct to form the hepatopancreatic ampulla (of Vater), which empties into the second portion of the duodenum, playing a crucial role in the digestion of carbohydrates, proteins, and fats.

Urinary bladder: muscular layer: The urinary bladder is a hollow muscular organ that stores urine before it is eliminated from the body. Its wall is composed of several layers, with the muscular layer (detrusor muscle) being the most prominent. This smooth muscle contracts during urination to expel urine and relaxes to allow the bladder to fill.

Other structures can be verified directly on the physical part or in the interactive 3D model.

Customizable Skin Tones:

This anatomical model offers the option to choose between three skin tones to better represent human diversity and meet different educational and clinical needs. It is possible to choose between light skin, intermediate tone, and dark skin, providing greater realism and inclusion during training and demonstrations.

Smart Tags:

Designed to provide comprehensive training in the healthcare area, with interactive simulations covering Retina, Ear, Throat, Pulses, Heart, Lung, and Abdominal exams. This solution assists in the development of diagnostic skills in different clinical scenarios, allowing



professionals and students to explore and improve their skills with greater safety and precision.

Heart sound recognition: Recognize 23 unique heart sounds with different patient postures and tools.

- Apex, Normal S1 S2, Supine, Bell
- Apex, Split S1, Supine, Bell
- Apex, S4, LLD, Bell
- Apex, Mid Systolic Click, Supine, Bell
- Apex, S3, LLD, Bell
- Apex, Early Systolic Murmur, Supine, Bell
- Apex, Mid Systolic Murmur, Supine, Bell
- Apex, Late Systolic Murmur, Supine, Bell
- Apex, Holosystolic Murmur, Supine, Bell
- Apex, Systolic Click & Late Systolic Murmur, LLD, Bell
- Apex, S4 & Mid Systolic Murmur, LLD, Bell
- Apex, S3 & Holosystolic Murmur, LLD, Bell
- Apex, OS & Diastolic Murmur, LLD, Bell
- Aortic, Normal S1 S2, Sitting, Bell
- Aortic, Systolic Murmur & Absent S2, Sitting, Bell
- Aortic, Early Diastolic Murmur, Sitting, Bell
- Aortic, Systolic & Diastolic Murmur, Sitting, Bell
- Pulmonary, Single S2, Supine, Diaphragm
- Pulmonary, Split S2 Persistent, Supine, Diaphragm
- Pulmonary, Split S2 Transient, Supine, Diaphragm
- Pulmonary, Ejection Systolic Murmur & Transient Split S2, Supine, Diaphragm
- Pulmonary, Split S2 & Ejection Systolic Murmur, Supine, Diaphragm
- Pulmonary, Ejection Systolic Murmur & Single S2 & Ejection Click, Supine, Diaphragm

Retinal exams: Simulate 39 retinal conditions, from normal and diabetic retinopathy (various stages) to rare diseases like retinitis pigmentosa and macular degeneration.

- Normal
- Tessellated Fundus
- Large Optic Disc Cupping
- DR1 (Diabetic Retinopathy - Stage 1)
- DR2 (Diabetic Retinopathy - Stage 2)
- DR3 (Diabetic Retinopathy - Stage 3)
- Branch Retinal Vein Occlusion (BRVO)
- Central Retinal Vein Occlusion (CRVO)
- Retinal Artery Occlusion (RAO)
- Rhegmatogenous Retinal Detachment
- Central Serous Chorioretinopathy (CSCR)
- Vogt-Koyanagi-Harada Disease (VKH)



- Maculopathy
- Epiretinal Membrane (ERM)
- Macular Hole (MH)
- Pathological Myopia
- Possible Glaucoma
- Optic Atrophy
- Severe Hypertensive Retinopathy
- Optic Disc Swelling and Elevation
- Displaced Optic Disc
- Congenital Optic Disc Anomaly
- Retinitis Pigmentosa
- Bietti's Crystalline Dystrophy
- Peripheral Retinal Degeneration and Tear
- Myelinated Nerve Fibers
- Particles in Vitreous
- Fundus Neoplasia
- Massive Hard Exudates
- Yellowish-White Spots (Flecks)
- Cotton Wool Spots
- Vessel Tortuosity
- Chorioretinal Atrophy - Coloboma
- Preretinal Hemorrhage
- Fibrosis
- Laser Marks
- Silicone Oil in Eye
- Blurred Fundus Without PDR (Proliferative Diabetic Retinopathy)
- Blurred Fundus With Suspected PDR (Proliferative Diabetic Retinopathy)

Ear exams: Conduct 9 realistic diagnostic exams.

- AOM
- Chronic
- Ear Ventilation
- Earwax
- Foreign Object
- Normal
- Otitis Externa
- Pseudomembrane
- Tympanosclerosis

Throat exams: Conduct 6 realistic diagnostic exams.

- Normal
- Oral Cancer (Benign)
- Oral Cancer (Malignant)



- Oral Dysplasia
- Pharyngitis
- Tonsillitis

Lung sound recognition: Recognize 15 lung sounds and breathing pattern analysis.

- Agonal Breathing
- Asthma Wheezing
- Bronchial
- Bronchovesicular
- Crackles - Coarse
- Crackles - Fine
- Crackles - Pulmonary Edema
- Crackles - Bronchiectasis
- Death Rattle
- Inspiratory Stridor
- Pleural Rubs
- Rhonchi - Low-Pitched Wheezes
- Vesicular - Normal
- Wheeze
- Wheeze-COPD

Abdominal sound diagnostics:

- Normal
- Normal Borborygmi
- Normal Gurgling
- Diarrhea
- Hyperactive
- Hypoactive
- Obstruction
- Absent

Virtual Patient Monitor: Provides an immersive and realistic training environment for healthcare students. It allows instructors to customize parameters for various vital signs, empowering students to interpret signals, develop critical thinking, and enhance their clinical reasoning skills through realistic scenarios.

Customizable Vital Signs

- Blood Pressure
- SpO2
- Heart Rate

ECG Interpretation: Train on 18 diverse ECG scenarios, including: Atrial Fibrillation, Ventricular Tachycardia and Heart Blocks. The monitor also simulates synchronized pulses with ECG for truly realistic cardiology training.



ECG Patterns

- Sinus Rhythm
- Atrial Extrasystole
- Atrial Flutter
- Atrial Fibrillation
- Paroxysmal Supraventricular Tachycardia (PSVT)
- Ventricular Extrasystole
- Ventricular Tachycardia (VT)
- Ventricular Fibrillation (VF)
- First-Degree Atrioventricular Block (AVB)
- Second-Degree Atrioventricular Block
- Third-Degree Atrioventricular Block (Complete Block)
- Long QT Syndrome
- ST Segment Elevation
- ST Segment Depression
- T Wave Inversion
- Left Ventricular Hypertrophy (LVH)
- Right Ventricular Hypertrophy (RVH)
- Wolff-Parkinson-White Syndrome (WPW)

Breathing Patterns

- Normal
- Dyspnea
- Apnea
- Cheyne-Stokes
- Biot
- Kussmaul

About Anatomical Models:

They are developed with resin replication technology, addressing the shortage of natural anatomical parts for teaching and research. They present all the essential morphological characteristics with excellent cost-benefit, resistance, manual painting, and numbering for precise identification of structures.

List of all visible structures:

- BODY
- 1 Rectococcygeus muscle
- 2 Coccygeus muscle
- 3 Piriformis muscle
- 4 Iliacus muscle



- 5 Psoas major muscle
- 6 Right common iliac artery
- 7 Right ureter
- 8 Quadratus lumborum muscle
- 9 Transverse abdominal muscle
- 10 Obliquus internus abdominis muscle
- 11 External oblique muscle
- 12 Right renal vein
- 13 Renal pyramids
- 14 Renal pelvis
- 15 Renal cortex
- 16 Inferior vena cava
- 17 Right adrenal gland
- 18 Diaphragm: costal part
- 19 7th rib
- 20 Diaphragm
- 21 Right dome of diaphragm
- 22 Serratus anterior muscle
- 23 Ganglion of sympathetic trunk
- 24 Pectoralis minor muscle
- 25 Pectoralis major muscle
- 26 Azygos vein
- 27 Intercostal nerve, artery and vein
- 28 First rib
- 29 Right subclavian vein
- 30 Clavicle
- 31 Right subclavian artery
- 32 Inferior belly of homohyoid muscle
- 33 Scalene muscle
- 34 Right jugular vein
- 35 Right common carotid artery
- 36 Sternocleidomastoid muscle
- 37 Digastric muscle; anterior belly
- 38 Mylohyoid muscle
- 39 Sublingual gland
- 40 Tongue
- 41 Palatine tonsil
- 42 Pharynx
- 43 Nasal bone
- 44 Sphenoidal bone: greater wing
- 45 Temporoparietalis muscle
- 46 Frontal bone
- 47 Frontal region



- 48 Orbital region
- 49 Auricle
- 50 Infra-orbital region
- 51 Lobule
- 52 Parotid gland
- 53 Upper lip
- 54 Parotid region
- 55 Lower lip
- 56 Mental region
- 57 Hyoid bone
- 58 Thyrohyoid membrane
- 59 Thyroid cartilage
- 60 Cricothyroid muscle
- 61 Cricoid cartilage
- 62 Thyroid gland
- 63 Trachea
- 64 Thoracic duct
- 65 Hemiazygos vein
- 66 Internal intercostal muscle
- 67 External intercostal muscle
- 68 Left dome of diaphragm
- 69 Left adrenal gland
- 70 Celiac trunk
- 71 Superior mesenteric artery
- 72 Left renal vein
- 73 Left kidney
- 74 testicular (ovarian) vein
- 75 testicular (ovarian) artery
- 76 Inferior mesenteric artery
- 77 Abdominal aorta
- 78 Left ureter
- 79 Iliac crest
- 80 Left common iliac artery
- 81 Left common iliac vein
- 82 Median sacral artery
- 83 Sacral promontory
- 84 Lumbosacral trunk
- 85 Sacral nerve S1
- 86 Sacral nerve S2
- 87 Sacral nerve S3
- 88 Sacral nerve S4
- 89 Sacral plexus
- 90 Internal iliac artery



- 91 Sacral nerve S5
- 92 Femoral artery
- 93 Lymph node
- 94 Great saphenous vein
- 95 Lymph vessel
- HEAD
- 1 Mandible
- 2 Facial artery
- 3 Masseter muscle
- 4 Parotid gland
- 5 Parotid duct
- 6 Zygomaticus major muscle
- 7 Apex of nose
- 8 Ala of nose
- 9 Tragus
- 10 Dorsum of nose
- 11 Temporal region
- 12 Helix
- 13 Triangular fossa
- 14 Crura of antihelix
- 15 Antihelix
- 16 Cymba
- 17 Crus of helix
- 18 External acoustic meatus
- 19 Semispinalis capitis muscle
- 20 Antitragus
- 21 Obliquus capitis superior muscle
- 22 Intertragic notch
- 23 Lobule
- 24 Greater occipital nerve
- 25 Anterior, posterior facial and lingual vein: common trunk
- 26 Left internal jugular vein
- 27 Hyoid bone
- 28 Sternocleidomastoid muscle
- 29 Genioglossus muscle
- 30 Minor sublingual ducts
- 31 Major sublingual duct
- 32 Tongue
- 33 Pharynx
- 34 Palatine tonsil
- 35 Superior pharyngeal constrictor muscle
- 36 Nasal bone
- 37 Zygomatic process



- 38 Sphenoidal bone: greater wing
- 39 Optic canal
- 40 Temporoparietalis muscle
- 41 Supra-orbital margin
- 42 Supra-orbital notch
- 43 Frontal bone
- 44 Frontal region
- 45 Orbital region
- 46 Upper eyelid
- 47 Lower eyelid
- 48 Nares
- 49 Base of nose
- 50 Parotid region
- 51 Upper lip
- 52 Oral fissure
- 53 Lower lip
- 54 Mentolabial sulcus
- 55 Mental region
- 56 External carotid artery
- 57 Internal carotid artery
- 58 Digastric muscle, posterior belly
- 59 Stylohyoid muscle
- 60 Maxillary artery
- 61 Superficial temporal artery
- 62 Squamous part of occipital bone
- 63 Confluence of sinuses
- 64 Corpus callosum: trunk
- 65 Inferior sagittal sinus
- 66 Falx cerebri
- 67 Superior sagittal sinus
- 68 Parietal bone
- 69 Squamous part of temporal bone
- 70 Frontal process of zygomatic bone
- 71 Superior nasal concha
- 72 Middle nasal concha
- 73 Nasal cavity
- 74 Inferior nasal concha
- 75 Limen nasi
- 76 Nasal vestibule
- 77 Hard palate
- 78 Soft palate
- 79 Styloglossus muscle
- 80 Orbicularis oris muscle



- 81 Lower incisor tooth
- 82 Sublingual gland
- 83 Mylohyoid muscle
- 84 Digastric muscle, anterior belly
- 85 Cerebellar cortex
- 86 Basilar artery
- 87 White substance of cerebellum: arbor vitae
- 88 4th ventricle
- 89 Pontine arteries
- 90 Superior cerebellar artery
- 91 Posterior cerebral artery
- 92 Pineal body
- 93 Corpus callosum: splenium
- 94 Tela choroidea of third ventricle
- 95 Medial frontobasal artery
- 96 Corpus callosum: genu
- 97 Optic nerve (II) (cut)
- 98 Internal carotid artery, cerebral segment
- 99 Ophthalmic nerve (V1)
- 100 Maxillary nerve (V2)
- 101 Oculomotor nerve (III), trochlear nerve (IV), abducent nerve (VI)
- 102 Mandibular nerve (V3)
- 103 Trigeminal nerve (V)
- 104 Facial nerve (VII), intermediate nerve, vestibulocochlear nerve (VIII)
- 105 Anterior inferior cerebellar artery
- 106 Glossopharyngeal nerve (IX), vagus nerve (X), accessory nerve (XI)
- 107 Hypoglossal nerve (XII)
- 108 Anterior spinal artery
- 109 Right vertebral artery: intracranial part
- BRAIN
- 1 Posterior lobe of cerebellum: tonsil
- 2 Posterior inferior cerebellar artery
- 3 Posterior lobe of cerebellum: retrosillar fissure
- 4 Anterior inferior cerebellar artery
- 5 Cerebellum: flocculonodular lobe
- 6 Cerebellum: Inferior semilunar lobule
- 7 Cerebellum: anterior lobe
- 8 Occipital pole
- 9 Lunate sulcus
- 10 Transverse cerebellar fissure
- 11 Occipital lobe
- 12 Inferior temporal gyrus
- 13 Inferior temporal sulcus



- 14 Superior temporal sulcus
- 15 Angular gyrus
- 16 Superior temporal gyrus
- 17 Supramarginal gyrus
- 18 Intraparietal sulcus
- 19 Parietal lobe
- 20 Postcentral sulcus
- 21 Postcentral gyrus
- 22 Central sulcus
- 23 Precentral gyrus
- 24 Precentral sulcus
- 25 Middle frontal gyrus
- 26 Inferior frontal sulcus
- 27 Inferior frontal gyrus
- 28 Frontal lobe
- 29 Lateral sulcus
- 30 Middle temporal gyrus
- 31 Frontal pole
- 32 Temporal lobe
- 33 Olfactory tract
- 34 Optic nerve (II)
- 35 Pituitary gland
- 36 Trigeminal nerve (V)
- 37 Vestibulocochlear nerve (VIII), intermediate nerve, facial nerve (VII)
- 38 Abducens nerve (VI)
- 39 Glossopharyngeal nerve (IX)
- 40 Olive
- 41 Vagus nerve (X)
- 42 Hypoglossal nerve (XII)
- 43 Accessory nerve (XI)
- 44 Bulbus
- 45 Medulla oblongata
- 46 Inferior medullary velum
- 47 Pons (Bridge of Varolius)
- 48 4th ventricle
- 49 Superior medullary velum
- 50 Cerebral peduncle
- 51 Mammillary body
- 52 Anterior cerebral artery
- 53 Anterior commissure
- 54 Medial frontobasal artery
- 55 Interthalamic adhesion
- 56 Septum pellucidum



- 57 Corpus callosum: genu
- 58 Callosomarginal artery
- 59 Pericallosal artery
- 60 Callosomarginal artery: anteromedial frontal branch
- 61 Callosomarginal artery: intermedial frontal branch
- 62 Callosomarginal artery: posteromedial frontal branch
- 63 Cingulate sulcus
- 64 Pericallosal artery: paracentral branch
- 65 Cingulate gyrus
- 66 Corpus callosum: trunk
- 67 Precuneus
- 68 Pericallosal artery: precuneal branch
- 69 Body of fornix
- 70 Tela choroidea of third ventricle
- 71 Parieto-occipital sulcus
- 72 Corpus callosum: splenium
- 73 Pineal body
- 74 Thalamus
- 75 Tectal (quadrigeminal) plate
- 76 Posterior cerebral artery
- 77 Parietal occipital artery
- 78 Calcarine sulcus
- 79 Calcarine artery
- 80 Cuneus
- 81 Cerebral aqueduct (Sylvius)
- 82 White substance of cerebellum: arbor vitae
- 83 Inferior vermis
- 84 Cerebellar cortex
- 85 Central canal of spinal cord
- EYE
- Pupil
- Iris
- Lacrimal gland: palpebral part
- Lacrimal gland: orbital part
- Levator palpebrae superioris tendon
- Superior oblique tendon
- Superior tarsus
- Fornix of lacrimal sac
- Lacrimal caruncle
- Bulbar conjunctiva
- Inferior tarsus
- Nasolacrimal duct
- Inferior lacrimal canaliculus



- Lacrimal sac
- Superior lacrimal canaliculus
- Superior oblique muscle
- Orbital fat body
- Common tendinous ring
- Medial rectus muscle
- Inferior rectus muscle
- Optic nerve (II)
- Lateral rectus muscle
- Superior rectus muscle
- Lateral rectus tendon
- Eyeball
- Inferior oblique tendon
- Inferior oblique muscle
- LUNGS
- Right lung: inferior lobe
- Right lung: oblique fissure
- Right lung: inferior border
- Right lung; middle lobe
- Right lung: costal surface
- Right lung: orizzontal fissure
- Right lung: anterior border
- Right lung: superior lobe
- Right lung: apex
- Left lung: apex
- Left lung: superior lobe
- Left lung: anterior border
- Left lung: costal surface
- Left lung: cardiac notch
- Left lung: lingula
- Left lung: oblique fissure
- Left lung: inferior lobe
- Left lung: inferior border
- Right lung: diaphragmatic surface and base of lung
- Right lung: lateral basal segmental bronchus
- Right lung: anterior basal segmental bronchus
- Right lung: posterior basal segmental bronchus
- Right lung: inferior lobar bronchus
- Right lung: middle lobar bronchus
- Right lung: inferior lobar artery
- Right lung: anterior segmental bronchus
- Right lung: posterior segmental bronchus
- Right lung: apical segmental bronchus



- Right lung; superior lobar artery: apical segmental artery
- Right lung:superior lobar artery
- Pulmonary artery: right branch
- Superior lobar bronchus
- Right superior pulmonary vein
- Intermediate bronchus
- Right inferior pulmonary vein
- Right lung: medial basal segmental bronchus
- Right lung: intersegmental part of right inferior pulmonary vein
- Left inferior pulmonary vein
- Left superior pulmonary vein
- Left main bronchus
- Left pulmonary artery
- Left lung: aortic arch impression
- Left bronchial artery
- Left bronchial vein
- Left lung: hilum
- Left lung: tracheobronchial nodes
- Left lung: pulmonary ligament
- Left lung: diaphragmatic surface and base of lung
- HEART
- 1 Interventricular septal branches
- 2 Right ventricle
- 3 Right coronary artery: ventricular branch
- 4 Anterior cardiac veins of right ventricle
- 5 Right coronary artery
- 6 Branch of conus arteriosus
- 7 Right auricle
- 8 Superior vena cava
- 9 Right brachiocephalic vein
- 10 Brachiocephalic trunk
- 11 Left common carotid artery
- 12 Left brachiocephalic vein
- 13 Left subclavian artery
- 14 Pulmonary trunk
- 15 Ascending aorta
- 16 Left auricle
- 17 Great cardiac vein
- 18 Circumflex branch of left coronary artery
- 19 Anterior interventricular vein and artery
- 20 Anterior interventricular branch: lateral branches
- 21 Apex
- 22 Right anterior papillary muscle



- 23 Tendinous cords
- 24 Tricuspid valve
- 25 Opening of coronary sinus
- 26 Right atrium
- 27 Right inferior pulmonary vein
- 28 Interatrial septum
- 29 Fossa ovalis
- 30 Right superior pulmonary vein
- 31 Right pulmonary artery
- 32 Pulmonary valve: anterior semilunar cusp
- 33 Pulmonary valve: left semilunar cusp
- 34 Pulmonary valve: right semilunar cusp
- 35 Interventricular septum
- 36 Right posterior papillary muscle
- 37 Arch of the aorta
- 38 Arterial ligament
- 39 Left superior pulmonary vein
- 40 Aortic valve: left semilunar cusp
- 41 Left atrium
- 42 Aortic valve: posterior semilunar cusp
- 43 Aortic valve: right semilunar cusp
- 44 Left inferior pulmonary vein
- 45 Mitral valve (Bicuspid valve)
- 46 Myocardium
- 47 Trabeculae carneae
- 48 Left ventricle
- 49 Posterior vein of left ventricle
- 50 Left marginal vein
- 51 Left coronary artery: left marginal branch
- 52 Great cardiac vein
- 53 Coronary sinus
- 54 Oblique vein of left atrium
- 55 Aorta
- 56 Azygos vein
- 57 Inferior vena cava
- 58 Left coronary artery: posterior left ventricular branch
- 59 Middle cardiac vein
- 60 Small cardiac vein
- 61 Right coronary artery: posterior interventricular branch
- 62 Posterior interventricular sulcus
- 63 Supraventricular crest
- 64 Conus arteriosus
- TRACHEA



- Right main bronchus
- Anular ligament
- Tracheal cartilage
- Trachea
- Tracheal bifurcation
- Left main bronchus
- Trachea: longitudinal muscular layer
- Right superior lobar bronchus
- Right inferior lobar bronchus
- AORTA AND OESOPHAGUS
- Oesophagus: thoracic part
- Aorta: lumen
- Aorta: thoracic part
- Oesophagus: lumen
- Oesophagus; mucous membrane
- Oesophagus; muscular layer (longitudinal and circular muscle layers)
- LIVER
- 1 Right lobe of liver
- 2 Diaphragmatic surface: anterior part
- 3 Diaphragmatic surface: right part
- 4 Costal impression
- 5 Diaphragmatic surface: superior part
- 6 Coronary ligament
- 7 Bare area
- 8 Left lobe of liver
- 9 Falciform ligament
- 10 Inferior border
- 11 Round ligament of the liver
- 12 Quadrate lobe
- 13 Omental tuberosity
- 14 Left hepatic duct
- 15 Ligamentum venosum
- 16 Common hepatic duct
- 17 Proper hepatic artery
- 18 Hepatic portal vein
- 19 Gastric impression
- 20 Caudate lobe
- 21 Fissure for ligamentum venosum
- 22 Inferior vena cava
- 23 Oesophageal impression
- 24 Right triangular ligament
- 25 Coronary ligament (inferior layer)
- 26 Suprarenal impression



- 27 Renal impression
- 28 Caudate process
- 29 Common bile duct
- 30 Cystic duct
- 31 Cystic artery
- 32 Neck of gallbladder
- 33 Right hepatic duct
- 34 Duodenal impression
- 35 Body of gallbladder
- 36 Colic impression
- 37 Fundus of gallbladder
- STOMACH
- 1 Angular incisure
- 2 Pylorus
- 3 Right gastric artery
- 4 Oesophagus; muscular layer (longitudinal and circular muscle layers)
- 5 Oesophagus; mucous membrane
- 6 Oesophagus; abdominal part
- 7 Left gastric artery
- 8 Lesser curvature
- 9 Fundus of stomach
- 10 Body of the stomach
- 11 Greater curvature
- 12 Left epiploic artery: gastric branches
- 13 Left gastroepiploic artery
- 14 Short gastric arteries
- 15 Cardial notch
- 16 Pylorus: serous coat
- 17 Pylorus: muscular layer (longitudinal and circular muscle layers)
- 18 Pylorus: mucous membrane
- 19 Pylorus: lumen
- 20 Right gastroepiploic artery
- 21 Stomach: serous coat
- 22 Right epiploic artery: gastric branches
- SPLEEN, PANCREAS AND DUODENUM
- 1 Superior mesenteric artery
- 2 Superior mesenteric vein
- 3 Inferior anterior pancreaticoduodenal artery
- 4 Head of pancreas
- 5 Circular folds
- 6 Neck of pancreas
- 7 Major duodenal papilla
- 8 Pancreatic duct



- 9 Accessory pancreatic duct
- 10 Minor duodenal papilla
- 11 Body of pancreas
- 12 Gastroduodenal artery
- 13 Pylorus
- 14 Proper hepatic artery
- 15 Spleen
- 16 Spleen: gastric impression
- 17 Gastrosplenic ligament
- 18 Short gastric vessels
- 19 Splenic artery
- 20 Splenic hilum
- 21 Lienorenal ligament
- 22 Tail of pancreas
- 23 Duodenojejunal flexure
- 24 Spleen: gastric impression
- 25 Jejunum
- 26 Spleen: anterior extremity
- 27 Spleen: inferior border
- 28 Spleen: renal impression
- 29 Inferior mesenteric vein
- 30 Splenic vein
- 31 Spleen: diaphragmatic surface
- 32 Spleen: superior border
- 33 Spleen: posterior extremity
- 34 Hepatic portal vein
- 35 Common hepatic artery
- 36 Common bile duct
- 37 Posterior superior pancreaticoduodenal artery
- 38 Descending part of duodenum
- 39 Pancreatic notch
- 40 Pancreas: uncinata process
- 41 Posterior inferior pancreaticoduodenal artery
- 42 Ascending part of duodenum
- 43 Horizontal part of duodenum (inferior part; transverse part)
- KIDNEY
- Right kidney: inferior extremity
- Minor renal calices
- Renal sinus
- Renal pelvis
- Base of pyramid
- Renal papilla
- Major renal calices



- Renal medulla (pyramid)
- Renal cortex
- Renal capsule
- Right kidney: superior extremity
- Arcuate arteries and vein
- Interlobar arteries
- Anterior superior segmental artery
- Anterior inferior segmental artery
- Fat in renal sinus
- Inferior segmental artery
- INTESTINE
- 1 Ileum
- 2 Ascending colon: free taenia
- 3 Ascending colon
- 4 Jejunum
- 5 Fatty appendices of colon (omental appendices)
- 6 Colon: right colic flexure (hepatic flexure)
- 7 Colon: left colic flexure (splenic flexure)
- 8 Transverse colon
- 9 Transverse colon: free taenia
- 10 Descending colon
- 11 Haustra of colon
- 12 Sigmoid colon
- 13 Rectal arteries
- 14 Left colic artery: descending branch
- 15 Superior rectal artery
- 16 Sigmoid arteries
- 17 Left colic artery
- 18 Left colic artery: ascending branch
- 19 Inferior mesenteric artery
- 20 Superior mesenteric artery
- 21 Middle colic artery
- 22 Right colic artery
- 23 Colic branch
- 24 Ileocolic artery
- 25 Ileal branch
- 26 Marginal artery
- 27 Bifurcation of superior rectal artery
- 28 Rectum
- 29 Appendicular artery
- 30 Vermiform appendix
- 31 Caecum: serous coat
- 32 Caecum; muscular layer (longitudinal muscle layers)



- 33 Caecum; muscular layer (circular muscle layers)
- 34 Orifice of vermiform appendix
- 35 Caecum: mucous membrane
- 36 Caecum
- 37 Frenuli
- 38 Caecum: lumen
- 39 Ileal diverticulum
- 40 Upper segment of ileocecal valve
- 41 Orifice of ileocecal valve
- 42 Terminal ileum
- 43 Lower segment of ileocecal valve
- GENITAL SYSTEM
- 1 Adductor longus muscle
- 2 Adductor brevis muscle
- 3 Inferior pubic ramus
- 4 Ischiocavernosus muscle
- 5 Superficial transverse perineal muscle
- 6 External anal sphincter muscle
- 7 levator ani muscle
- 8 Rectum: longitudinal muscle layer
- 9 Seminal gland (Seminal vesicle)
- 10 Prostate
- 11 Urinary bladder: muscular layer
- 12 Obturator internus muscle
- 13 Superior pubis ramus
- 14 Obturator externus muscle
- 15 Fatty layer of subcutaneous tissue (Camper's fascia)
- 16 Pyramidalis muscle
- 17 Median umbilical ligament
- 18 Lateral umbilical ligament
- 19 Right ureter
- 20 Rectum: mucous membrane
- 21 Rectum: circular muscular layer
- 22 Rectum: lumen
- 23 Rectum: serous coat
- 24 Left ureter
- 25 Ductus deferens
- 26 Parietal peritoneum
- 27 Inferior epigastric vessels
- 28 Rectus abdominis muscle
- 29 Linea alba