

# ■ anatomical models



*Nasco*  
HEALTHCARE



# Anatomical Torsos

flayered torso models disassemblable

- Resin approved in toxicological tests
- High quality natural molding
- Made of stable and unbreakable synthetic material
- Original replicas
- Numbered and hand painted
- Includes information card with related structures

# Muscular Dual-Sex Human Torso with Opened Neck and Back, 28 Parts



MG32004

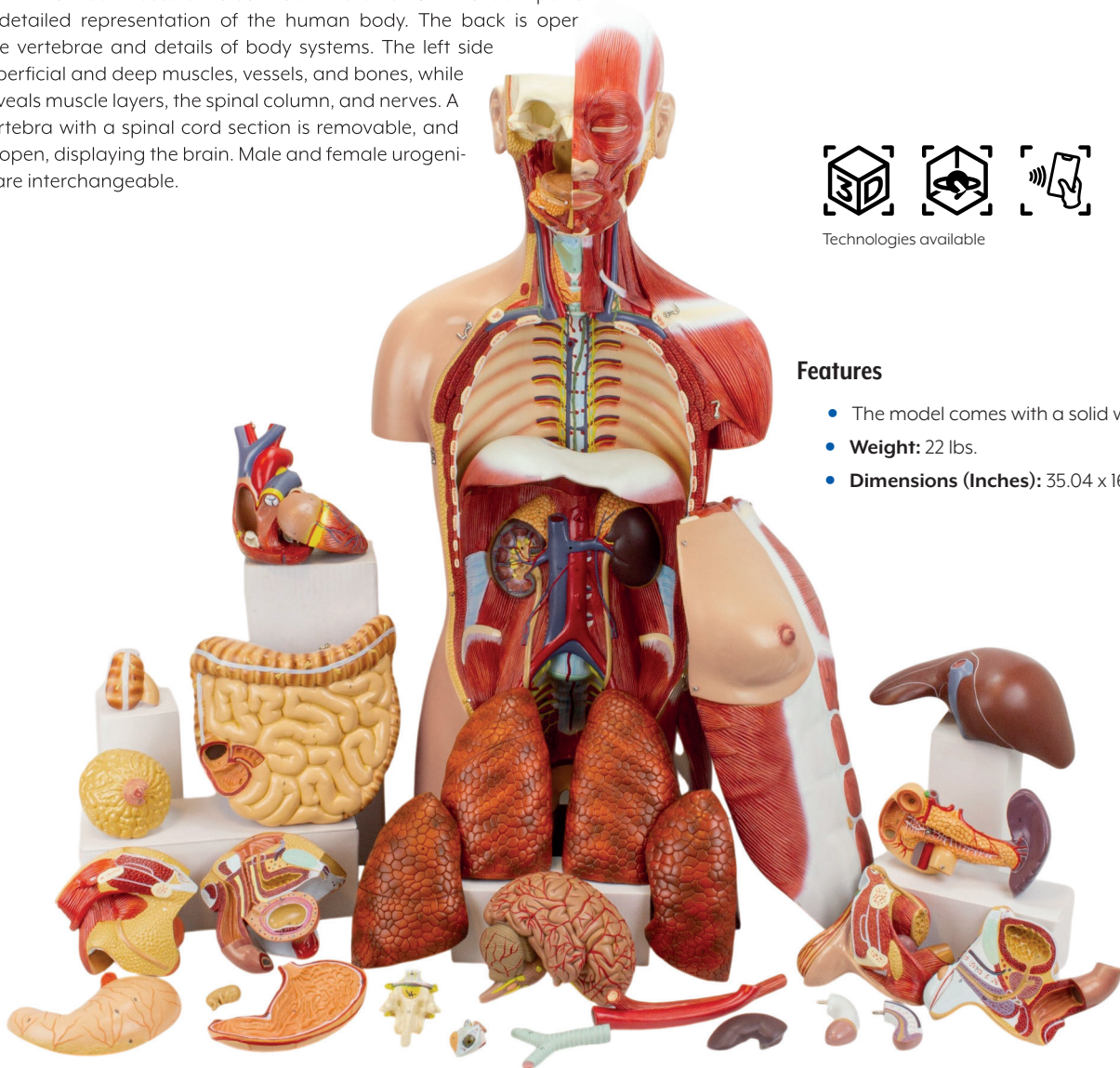
This life-size anatomical muscular torso model features 28 removable parts offering a detailed representation of the human body. The back is open showing the vertebrae and details of body systems. The left side exposes superficial and deep muscles, vessels, and bones, while the back reveals muscle layers, the spinal column, and nerves. A thoracic vertebra with a spinal cord section is removable, and the head is open, displaying the brain. Male and female urogenital organs are interchangeable.



Technologies available

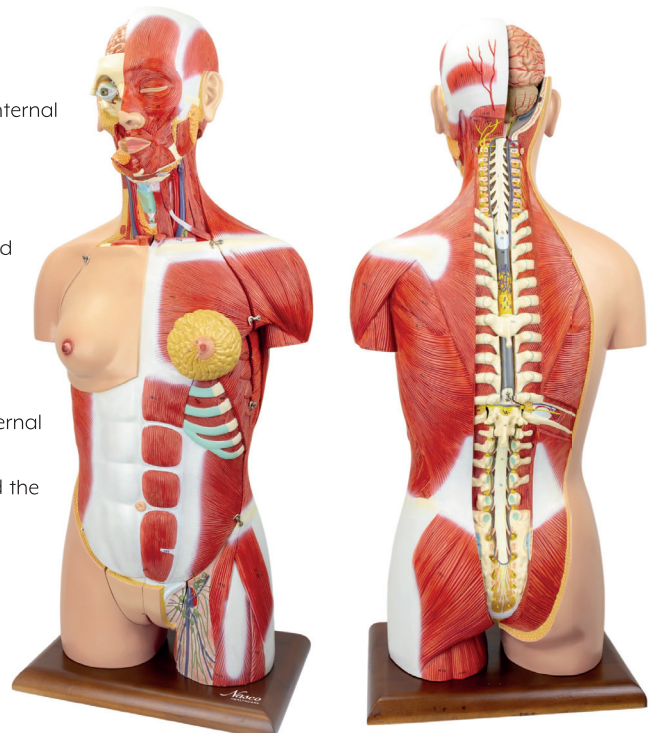
## Features

- The model comes with a solid wooden base
- **Weight:** 22 lbs.
- **Dimensions (Inches):** 35.04 x 16.14 x 9.06



## Removable parts include:

- Eye with optic nerve and extraocular muscles;
- Half of the brain, divided along the longitudinal axis fissure, showing internal structures and blood vessels;
- Trachea;
- Descending thoracic aorta and esophagus;
- Right and left lungs (2 pieces each), showing the bronchial tree and vascularization;
- Chest and abdominal covering, showing superficial musculature;
- Mammary gland;
- Liver with gallbladder;
- Half of a kidney in section along the frontal plane, showing the internal structure and vessels;
- Heart in 2 parts with clear representation of atria, ventricles, valves and the heart wall section;
- Stomach dissected into 2 parts;
- Pancreas, stomach, duodenum and spleen with vessels and ducts;
- Small and large intestines with removable lid over the cecum portion;
- Male urogenital (4 parts);
- Female urogenital system (3 parts) including embryo;
- Thoracic vertebrae (T12) with spinal cord.



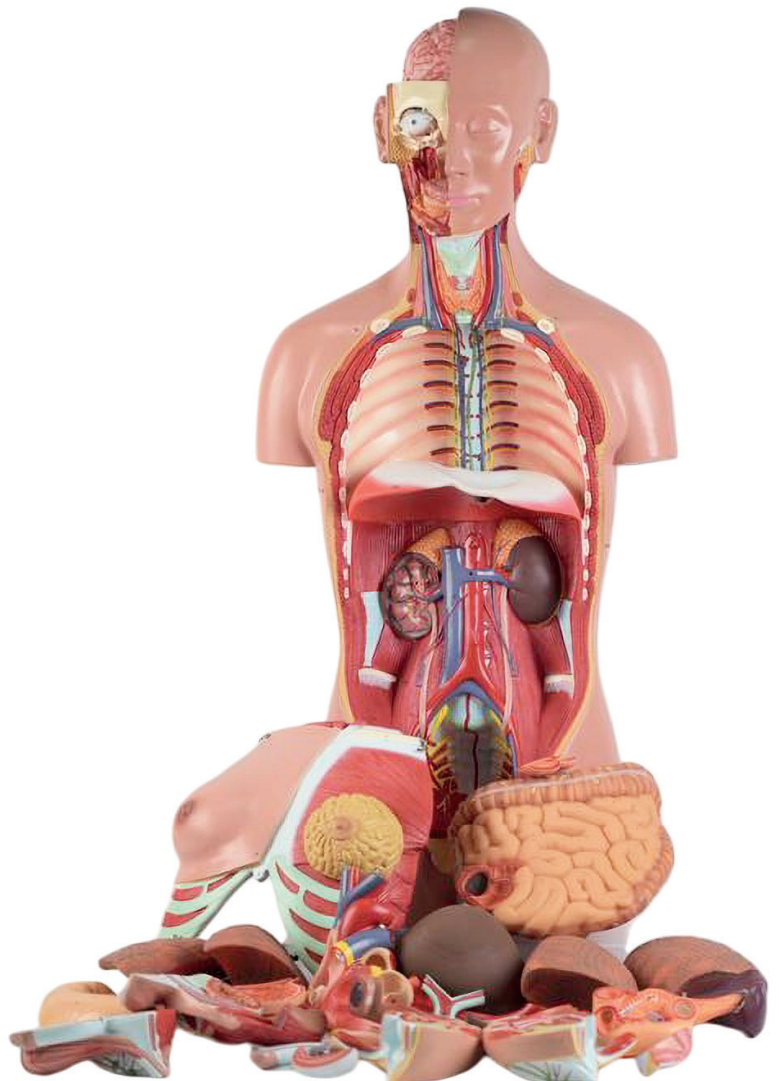
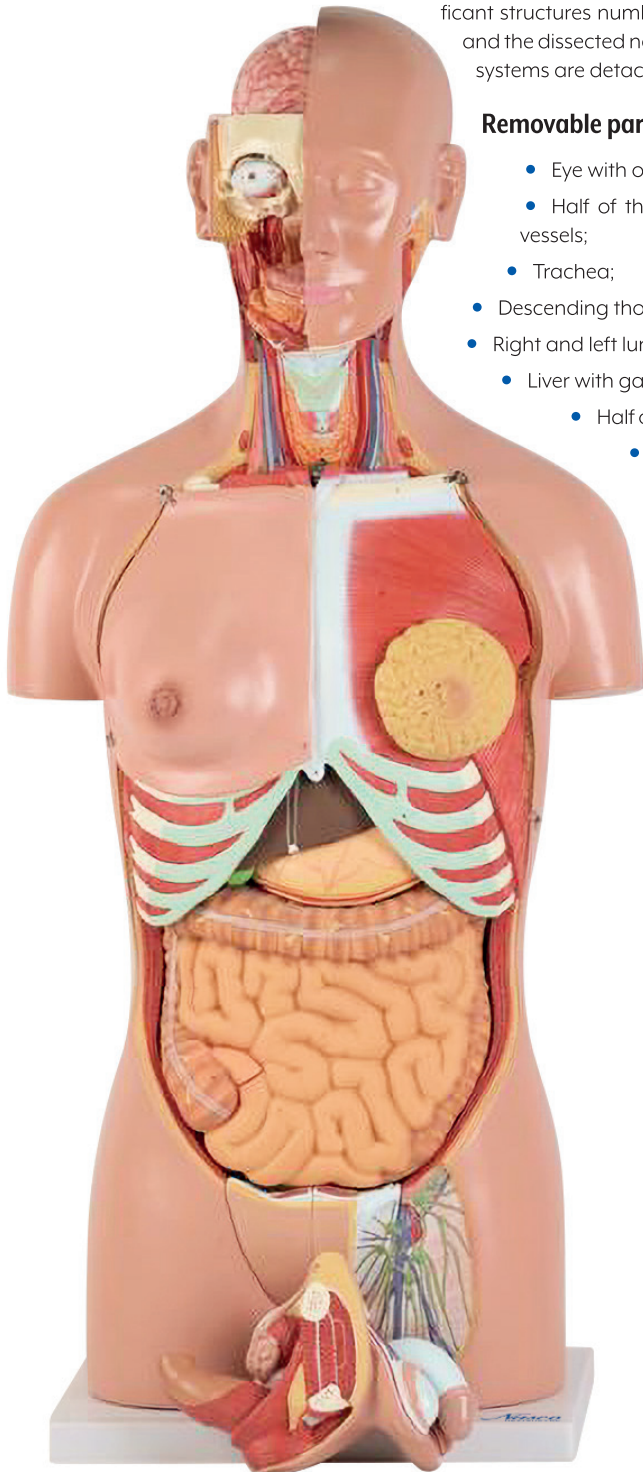
# Classic Dual-Sex Human Torso with Opened Neck and Back, 28 Parts

MG31999

Male and female luxury anatomical torso model, composed of 28 parts, presents life-size and open back, providing a detailed reproduction of anatomical structures. The model allows access to the main body systems, with significant structures numbered and referenced on an information card. The head is open, exposing the brain, and the dissected neck reveals muscles, nerves, blood vessels, and glands. The male and female urogenital systems are detachable and interchangeable.

## Removable parts include:

- Eye with optic nerve and extraocular muscles;
- Half of the brain, divided along the longitudinal axis showing internal structures and blood vessels;
- Trachea;
- Descending thoracic aorta and esophagus;
- Right and left lungs (2 pieces each), showing the bronchial tree and vascularization;
- Liver with gallbladder;
- Half of a kidney in section along the frontal plane, showing the internal structure and vessels;
- Heart in 2 parts with clear description of the atria, ventricles, valves and the heart wall section;
- Stomach dissected into 2 parts;
- Pancreas, stomach, duodenum and spleen with vessels and ducts;
- Small and large intestines with removable lid over the cecum portion;
- Male and female urogenital (4 parts each), sectioned to provide excellent views of internal elements;
- Thoracic vertebrae (T12) with spinal cord;
- Female chest wall.



## Features

- The model comes with a polymer base
- **Weight:** 23.1 lbs.
- **Dimensions (Inches):** 35.04 x 16.14 x 9.06



Technologies available

# Classic Dual-Sex Human Torso with Opened Neck and Back, 27 Parts

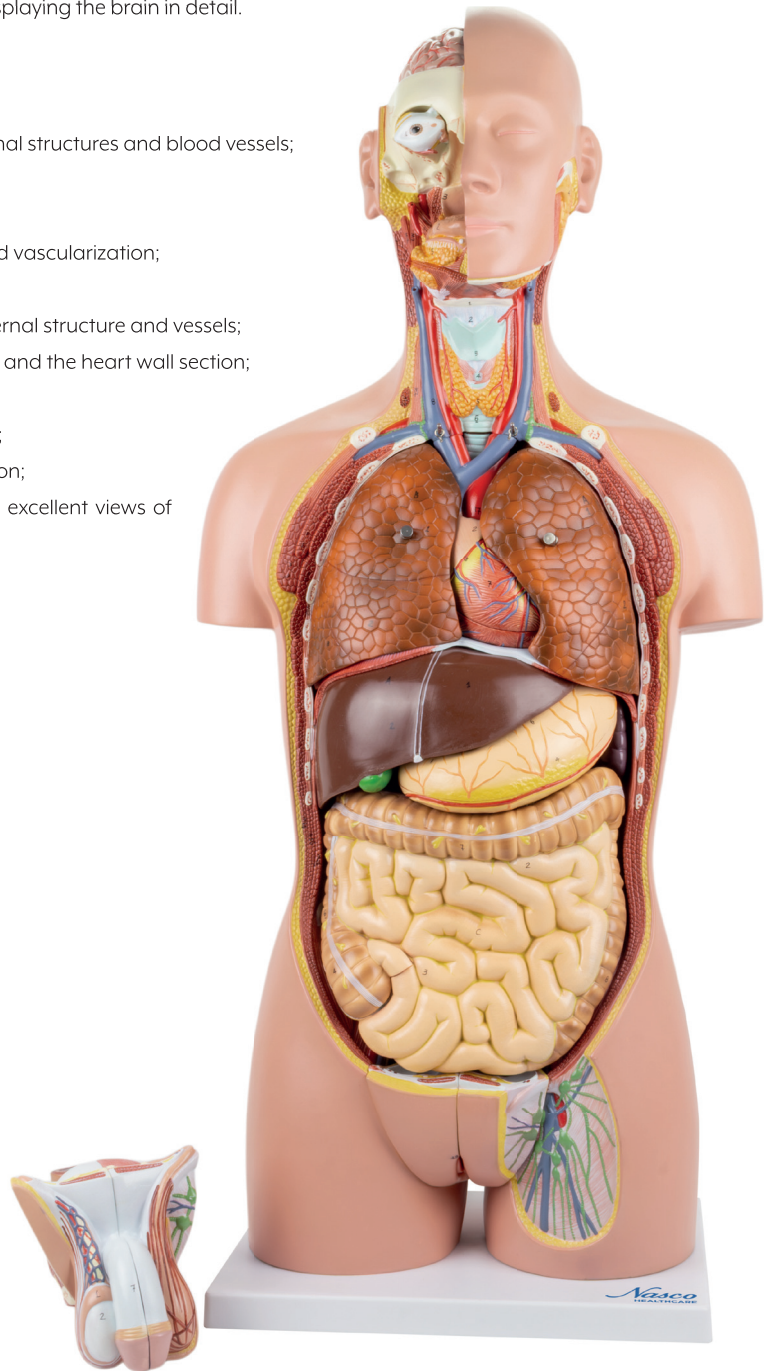


MG32003

Human anatomical torso model, male and female, composed of 27 parts, offering a realistic and detailed representation of internal and external anatomical structures. The back is open, exposing muscle layers, spine, and nerve branches. Includes removable internal organs for individualized study, and interchangeable male and female urogenital systems. A thoracic vertebra with spinal cord section is also removable. The head is open, displaying the brain in detail.

## Removable parts include:

- Eye with optic nerve and extraocular muscles;
- Half of the brain, divided along the longitudinal axis showing internal structures and blood vessels;
- Trachea;
- Descending thoracic aorta and esophagus;
- Right and left lungs (2 pieces each), showing the bronchial tree and vascularization;
- Liver with gallbladder;
- Half of a kidney in section along the frontal plane, showing the internal structure and vessels;
- Heart in 2 parts with clear representation of atria, ventricles, valves and the heart wall section;
- Stomach dissected into 2 parts;
- Pancreas, stomach, duodenum and spleen with vessels and ducts;
- Small and large intestines with removable lid over the cecum portion;
- Male and female urogenital (4 parts each), sectioned to provide excellent views of internal elements;
- Thoracic vertebrae (T12) with spinal cord.



## Features

- The model comes with a polymer base
- **Weight:** 23.1 lbs.
- **Dimensions (Inches):** 36.22 x 17.32 x 11.81

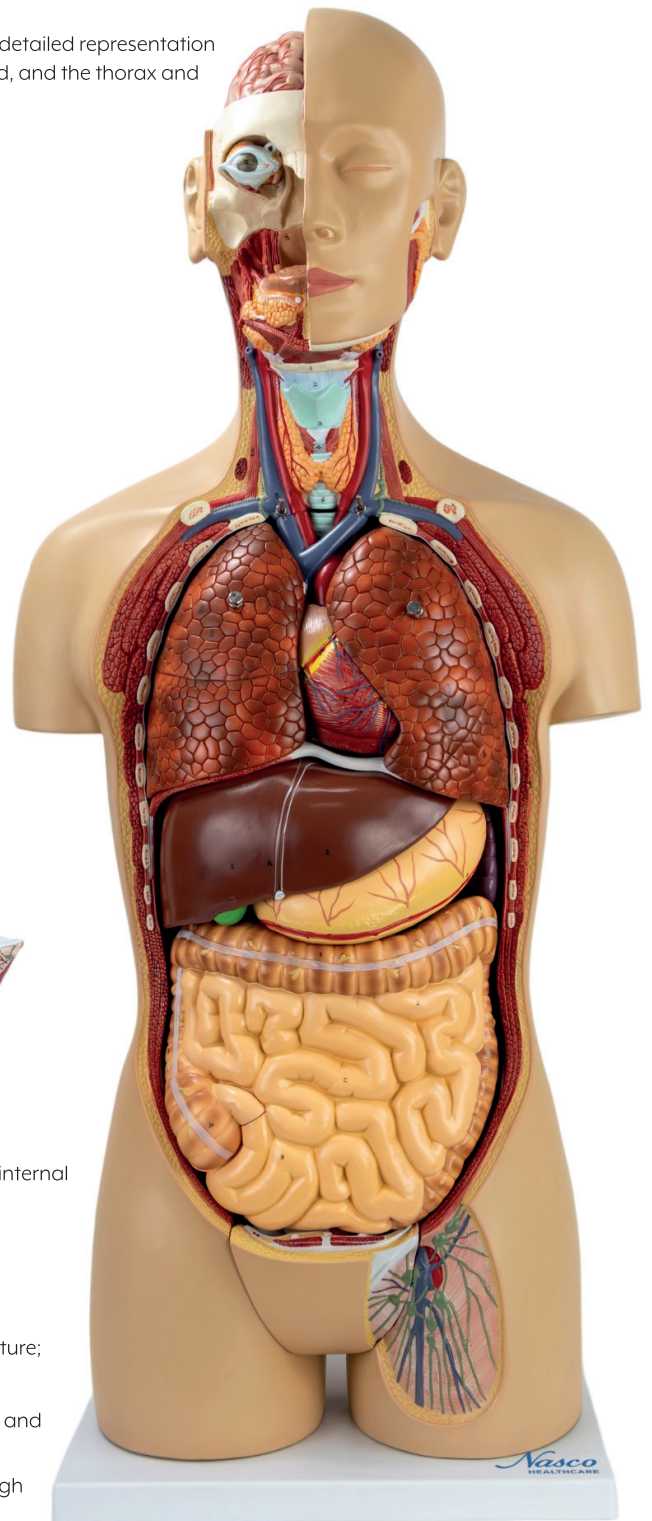


Technologies available

# Classic Unisex Human Torso, 18 Parts

MG31998

A life-size anatomical model composed of 18 removable parts, offering a realistic and detailed representation of internal organs and associated structures. The head is sectioned, the neck dissected, and the thorax and abdomen are completely open for complete visualization.



## Removable parts include:

- Half of the brain, divided along the longitudinal axis to expose fissures, internal structures and blood vessels;
- The eye with optic nerve and extraocular muscles;
- The trachea;
- The descending thoracic aorta and esophagus;
- The right and left lungs (2 pieces each), showing the bronchial tree and vasculature;
- The liver with gallbladder;
- Half of a kidney, sectioned along the frontal plane to show the internal structure and vessels;
- The heart in two parts showing the atria, ventricles, heart valves and cut through the ventricular heart wall;
- The stomach;
- The pancreas, stomach, duodenum and spleen with vessels and ducts;
- The small intestine and large intestine with a removable window in the cecal region;
- The removable cover in the crotch area.

## Features

- The model comes with a polymer base
- **Weight:** 21.9 lbs.
- **Dimensions (Inches):** 35.04 x 16.14 x 9.06



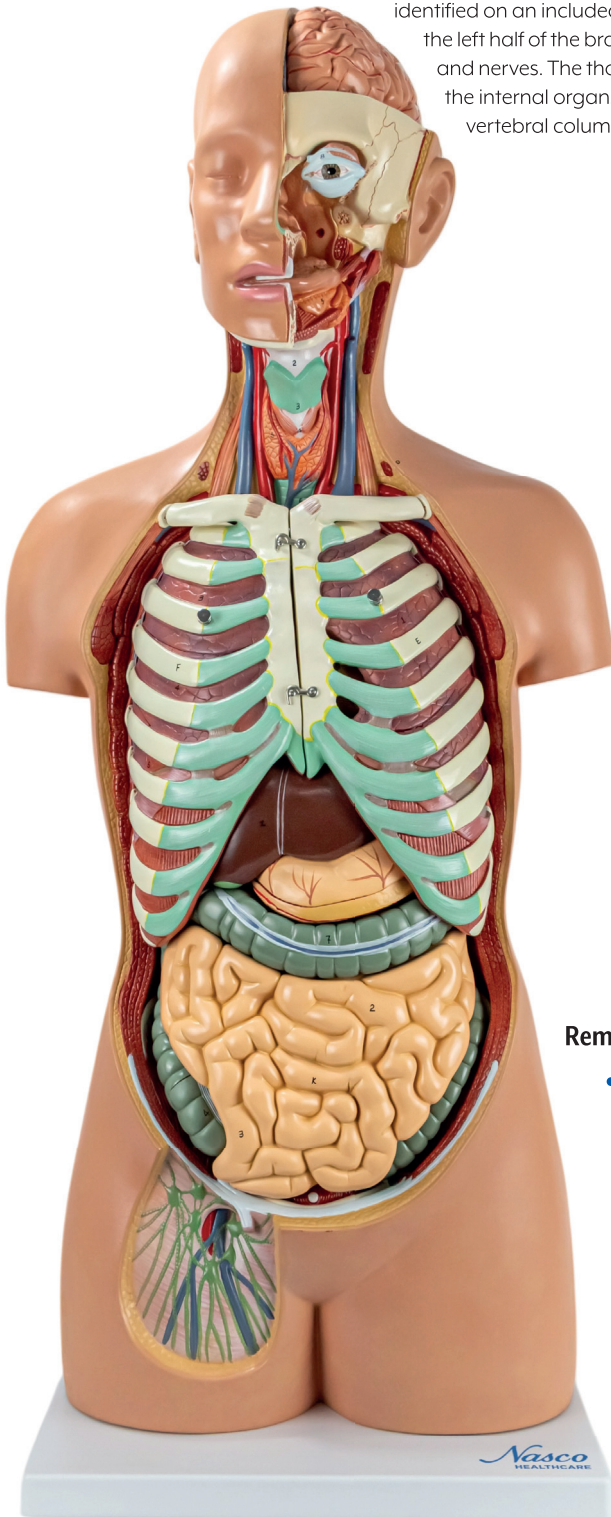
Technologies available

# Classic Unisex Human Torso with Opened Neck and Back, 18 Parts



MG31995

This highly detailed, life-size unisex anatomical model is composed of 18 removable parts and is ideal for human anatomy classes in educational and training settings. Key anatomical structures from various body systems are numbered and identified on an included reference card, making it easier to study and understand. The head is sectioned to reveal the left half of the brain, while the neck features a ventral dissection that exposes muscles, glands, blood vessels, and nerves. The thoracic and abdominal cavities are fully opened, offering a clear and comprehensive view of the internal organs. The back of the model is also dissected, showcasing the muscular layers of the back, the vertebral column, spinal cord, and nerve roots.



## Removable parts include:

- Left half of the brain;
- Left cerebellum;
- Eye with muscles and optic nerve;
- Lung halves with rib cage (2 parts);
- Heart (2 parts);
- Liver
- Stomach (2 parts);
- Small and large intestines with pancreas and appendix (4 parts);
- Right kidney half;
- Half of the urinary bladder;
- 8th thoracic vertebra (T8).



Technologies available

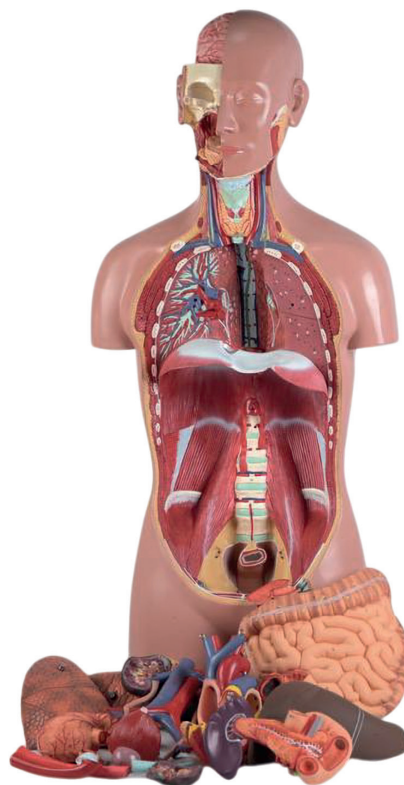
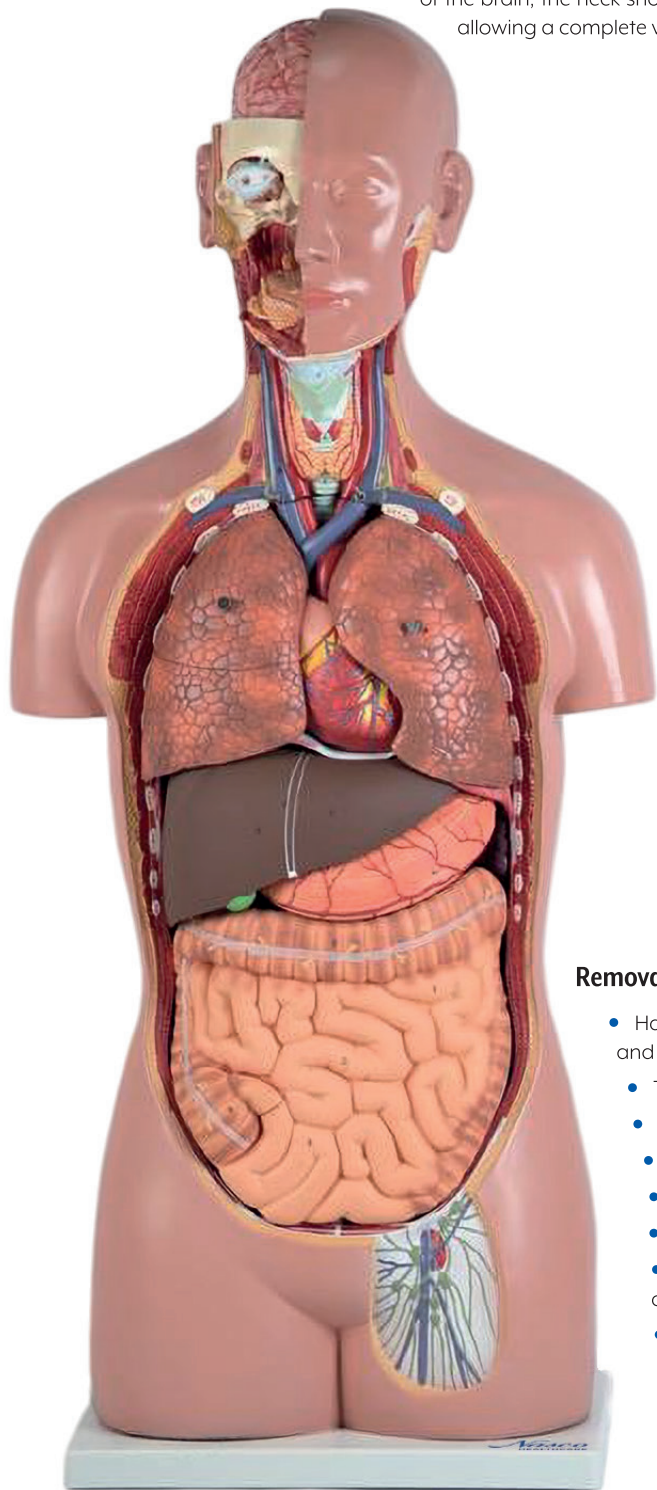
## Features

- The model comes with a polymer base
- **Weight:** 19.8 lbs.
- **Dimensions (Inches):** 35.04 x 16.14 x 9.06

# Classic Unisex Human Torso, 16 Parts

MG31997

This anatomical model represents a unisex human torso, composed of 16 removable parts, carefully designed and hand-painted to accurately display the main internal and external anatomical structures. The head is sectioned, revealing half of the brain; the neck shows muscular, neural, and vascular details; and the thorax and abdomen are open, allowing a complete view of the internal organs.



## Removable parts include:

- Half of the brain, divided along the longitudinal axis to expose fissures, internal structures and blood vessels;
- The eye with optic nerve and extraocular muscles;
- The trachea;
- The descending thoracic aorta and esophagus;
- The right and left lungs (2 pieces each), showing the bronchial tree and vasculature;
- The liver with gallbladder;
- Half of a kidney, sectioned along the frontal plane to show the internal structure and vessels;
- The heart in two parts showing the atria, ventricles, heart valves and cut through the ventricular heart wall;
- The stomach;
- The pancreas, stomach, duodenum and spleen with vessels and ducts;
- The small intestine and large intestine with a removable window in the cecal region;
- The removable cover in the crotch area.



Technologies available

## Features

- The model comes with a polymer base
- **Weight:** 20.9 lbs.
- **Dimensions (Inches):** 35.04 x 16.14 x 9.06

## Mini Unisex Human Torso, 12 Parts

MG29696

It is a half-life-size torso with a removable head that opens to reveal internal structures, including a detailed removable half-brain. The front portions of both lungs are removable, exposing pulmonary vasculature and airways (right lung) and general appearance of the internal tissue (left lung).

### Removable parts include:

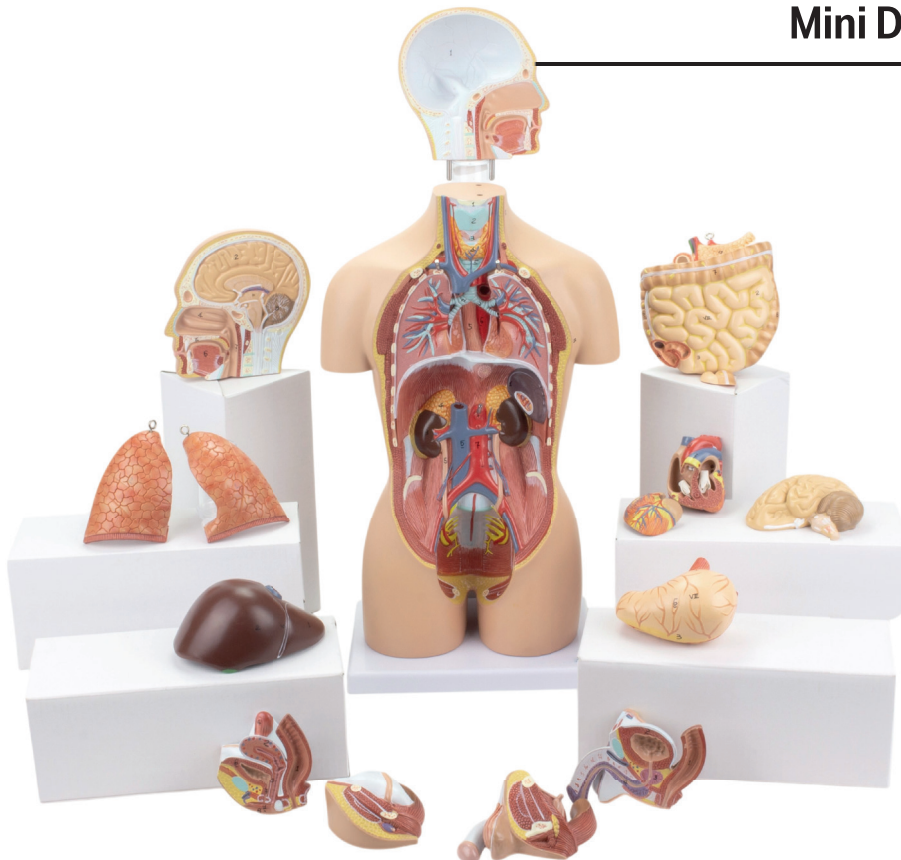
- Shows a section of the brain and upper respiratory tract;
- Half of the brain, showing internal structures;
- 2 lungs;
- Cardiac (2 parts) showing the atria, ventricles and valves;
- Liver with gallbladder;
- Stomach;
- Single piece including small intestine, large intestine and pancreas;
- Removable lid that exposes the interior of the cecum and ileum.

### Features

- The model comes with a polymer base
- **Weight:** 4.9 lbs.
- **Dimensions (Inches):** 7.87 x 5.91 x 18.31



Technologies available



## Mini Dual-Sex Human Torso, 16 Parts

MG29699

MG29697

MG29698

This half-life-size torso model is available in three facial variations to reflect anatomical diversity: one with distinctly Asian features, one with Caucasian features, and another with African features. Each model accurately presents realistic anatomical structures, making it an excellent tool for teaching basic anatomy.

### Removable parts include:

- Head, divided into 2 parts, which shows a section of the brain and the upper respiratory tract;
- Half of the brain, showing internal structures;
- 2 lungs;
- Heart in 2 parts showing the atria, ventricles and valves;
- Liver with gallbladder;
- Stomach;
- Single piece including small intestine, large intestine and pancreas;
- Removable covering that exposes the interior of the cecum;
- Male reproductive organs in 2 parts;
- Female reproductive organs in 2 parts.

### Features

- The model comes with a polymer base
- **Weight:** 4.9 lbs.
- **Dimensions (Inches):** 7.87 x 5.91 x 18.31



Technologies available

# MRI Torso with 24 Transversal Sections

## MG32002

Life-size torso model, cut horizontally into 24 pieces, showing how a CT and MRI scan works. Each part can be rotated and removed for closer and more accurate examination. All structures, including muscles, nerves, are numbered and identified on an information card.



### Features

- The model comes with a solid wooden base with metal stand and rod
- **Weight:** 26.5 lbs.
- **Dimensions (Inches):** 35.43 x 19.69 x 15.75



Technologies available

## Cross Section of the Abdomen

MG31112

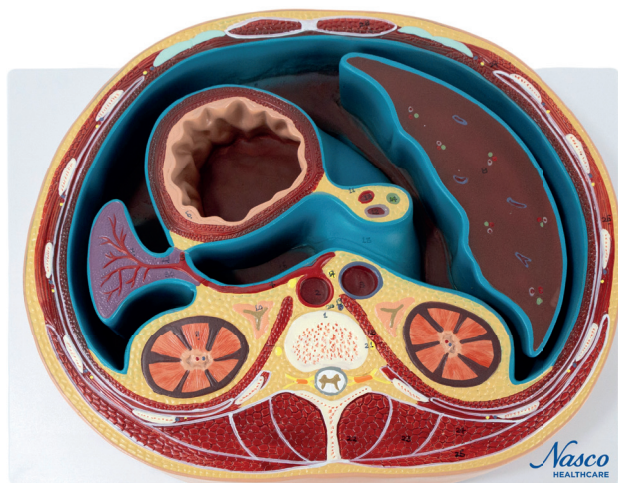
A life-size representation of an axial cross-section view of the abdomen, at the level of the stomach and T12 vertebra, showing the liver, kidney, spleen, and other abdominal structures sectioned horizontally.

### Features

- The model comes with a polymer base
- **Weight:** 3.3 lbs.
- **Dimensions (Inches):** 12.99 x 9.06 x 2.36



Technologies available



## Cross Section of Torax

MG31113

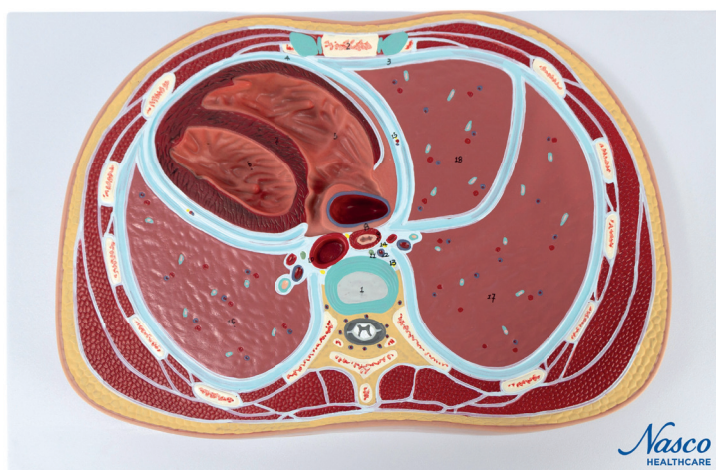
A life-size representation of a cross-section of the thorax at the level of vertebra T8, displaying details of the heart, lungs, blood vessels, and other important thoracic structures. The model is mounted on a polymer base and features hand-numbered and painted structures for easy identification.

### Features

- The model comes with a polymer base
- **Weight:** 2.2 lbs.
- **Dimensions (Inches):** 15.75 x 10.24 x 3.94



Technologies available



## Thoracic Cavity Laryngeal Cardiopulmonary, 16 Parts

MG36904

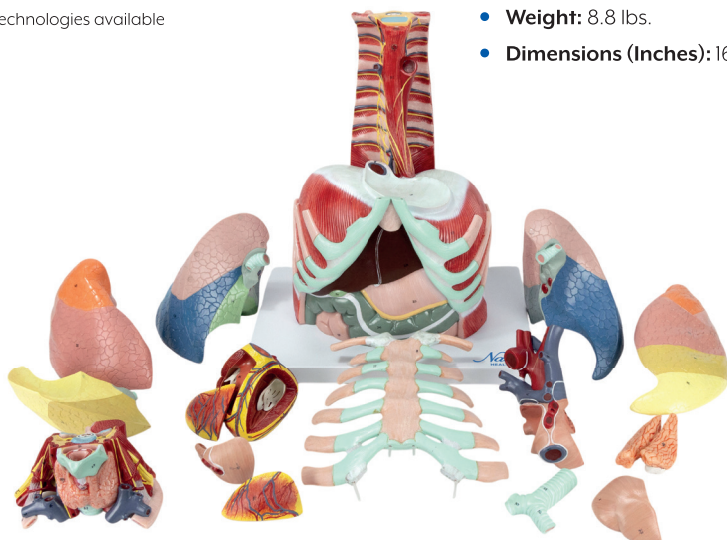
Disassemblable into 16 parts, representing in life size and with rich detail a wide range of thoracic and upper abdominal structures, including lungs (removable and sectioned), heart (sectioned into 6 parts), larynx, trachea, thyroid, sternum, ribs, vertebral column, deep spinal muscles, spinal discs, liver, stomach, and large intestine. The model is numbered in 110 specific regions and uses a combination of pins and hidden magnets for easy assembly and disassembly.



Technologies available

### Features

- The model comes with a polymer base
- **Weight:** 8.8 lbs.
- **Dimensions (Inches):** 16.93 x 9.84 x 7.87



## Female Perineum

### MG30414

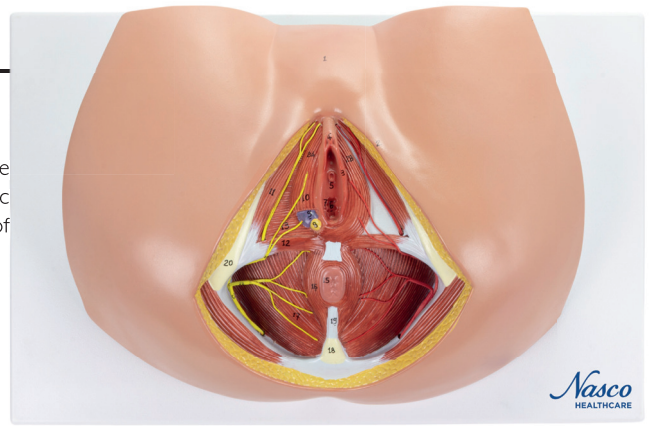
A life-size model that demonstrates in detail the female perineal area, including the anus and external genitalia. It presents an accurate representation of the pelvic diaphragm, urogenital perineum, and anal perineum, including the distribution of blood vessels and nerve endings.

#### Features

- The model comes with a polymer base
- **Weight:** 2.6 lbs.
- **Dimensions (Inches):** 12.99 x 9.06 x 3.94



Technologies available



## Male Perineum

### MG30415

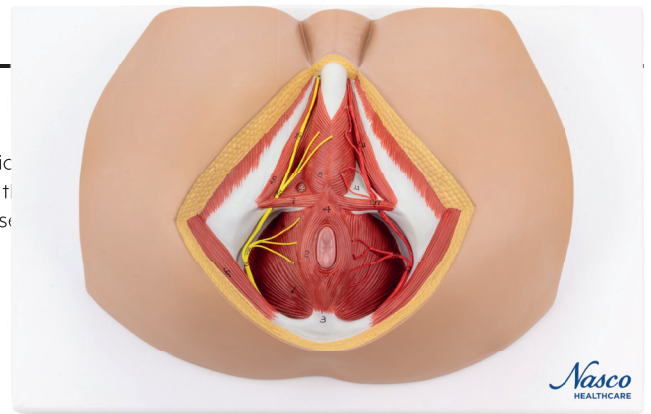
A life-size anatomical model that meticulously represents the male perineal region including the anus and external genitalia. It features detailed representation of the pelvic diaphragm, urogenital perineum, and anal perineum, including blood vessels and nerve endings.

#### Features

- The model comes with a polymer base
- **Weight:** 2.6 lbs.
- **Dimensions (Inches):** 12.99 x 9.06 x 3.94



Technologies available



## Nasogastric Torso Training

### MG32013

Deluxe 3-dimensional hand-painted torso model with 2 sides. One side is covered with a transparent cover, shows the sagittal section including the nose, mouth, pharynx, trachea, esophagus, lungs and stomach. The other side depicts the anatomically correct view of a human torso for teaching the appropriate method of measuring NG tube length. The torso also features a tracheostomy to demonstrate the variety of techniques and care.

The model is used for realistic practice of procedures:

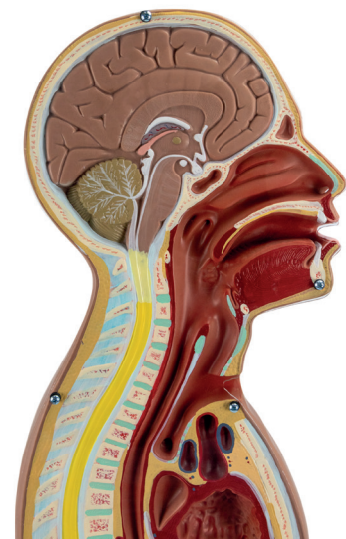
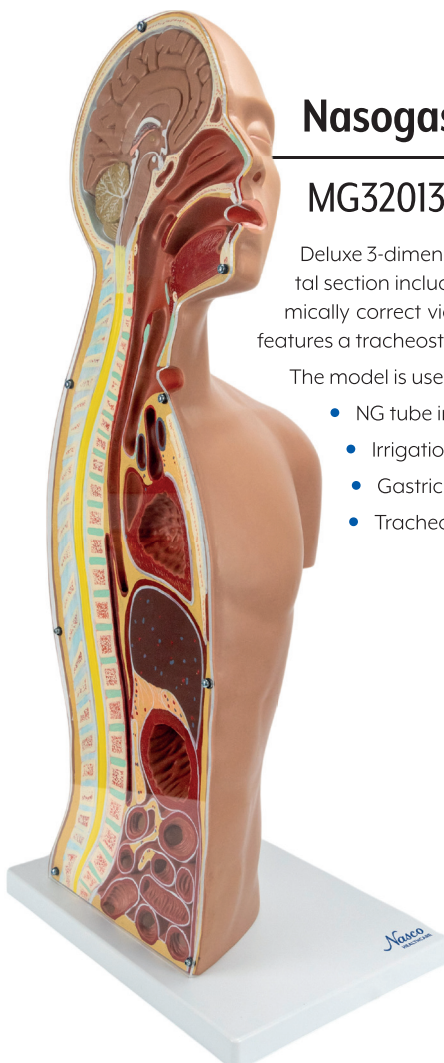
- NG tube insertion;
- Irrigation, monitoring and removal;
- Gastric lavage and gavage;
- Tracheostomy and Suction Care.

#### Features

- The model comes with a polymer base
- **Weight:** 9.9 lbs.
- **Dimensions (Inches):** 12.99 x 9.06 x 2874



Technologies available



(NGT and Trach tube not included)