

■ anatomical models



Nasco
HEALTHCARE



Respiratory System

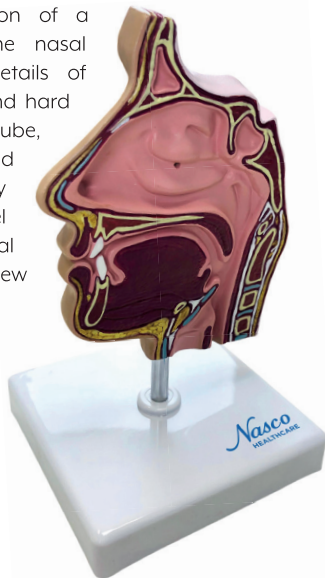
lungs and airways

- Resin approved in toxicological tests
- High quality natural molding
- Made of stable and unbreakable synthetic material
- Original replicas
- Numbered and hand painted
- Includes information card with related structures

Sinus Median Section

MG38417

A life-size representation of a median section of the nasal passages, including details of the nasal cavity, soft and hard palate, uvula, auditory tube, pharyngeal tonsil, and ethmoid and maxillary sinus cavities. The model features high anatomical fidelity, allowing a clear view of the internal structures.



Technologies available

Features

- The model comes with a polymer base with a metal support and rod
- **Weight:** 2.2 lbs.
- **Dimensions (Inches):** 4.72 x 3.94 x 5.12

Larynx, 2 Parts

MG29157

This anatomical model represents a life-size human larynx, sectioned into two parts for detailed visualization of its internal and external structures. It features careful hand-painting and numbering, allowing for easy identification of the main anatomical structures.



Technologies available

Features

- **Weight:** 1.1 lbs.
- **Dimensions (Inches):** 4.33 x 4.33 x 5.51

Sinus Median Section with Pathology

MG35531

This life-size anatomical model presents a detailed cross-section of the nasal and oral passages, including cross-sections of common pathologies. It shows the complex interrelationship between the structures of the nasal, oral, pharyngeal, and laryngeal cavities, exhibiting various lesions such as inflammatory polyps, tonsillitis, and other representations of pharyngeal and laryngeal pathologies.



Technologies available

Features

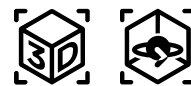
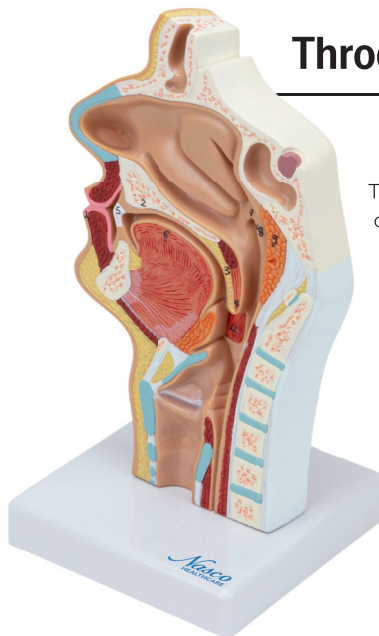
- The model comes with a polymer base
- **Weight:** 1.1 lbs.
- **Dimensions (Inches):** 4.33 x 4.33 x 8.66



Nose Cavities, Mouth and Throat Median Section

MG17231

This anatomical model represents a near-median cross-section of the nose and nasal passages, exhibiting in detail the nasal cavity, soft and hard palate, uvula, pharyngeal tonsil, and other important structures of the nasal and oral sinus.



Technologies available

Features

- The model comes with a polymer base
- **Weight:** 4.4 lbs.
- **Dimensions (Inches):** 4.72 x 0.98 x 9.45

Larynx 2 Times Enlarged, 5 Parts

MG29156

This detailed model presents a human larynx enlarged twice its natural size, sectioned longitudinally into 5 parts to reveal the internal structures. Important anatomical structures are numbered and hand-painted with didactic colors, facilitating understanding and study.



Technologies available

Features

- **Weight:** 1.1 lbs.
- **Dimensions (Inches):** 5.91 x 5.91 x 8.07



Larynx Model with Tongue, 5 Parts

MG29773



Five-part anatomical model of the Larynx with Tongue, representing in detail the structure of the larynx, tongue, and teeth, dismountable for individual study of its internal and external structures. The model extends from the trachea to the tongue, including a detailed view of the sublingual and submandibular glands, as well as the vocal cord and epiglottis. It features 55 numbered and hand-painted regions, facilitating the precise identification of muscles, cartilages, ligaments, and arteries.



Technologies available

Features

- The model comes with a polymer base
- **Weight:** 1.1 lbs.
- **Dimensions (Inches):** 3.94 x 3.94 x 5.91

Lung with Larynx, 7 Parts

MG30888



Life-size anatomical model of the human respiratory system, composed of 7 parts, including the sagittally dissected larynx, the frontally dissected lungs, and a two-part heart. This detailed model allows for the study of respiratory and cardiac anatomy, with manual numbering and painting to facilitate the identification of structures.



Technologies available

Features

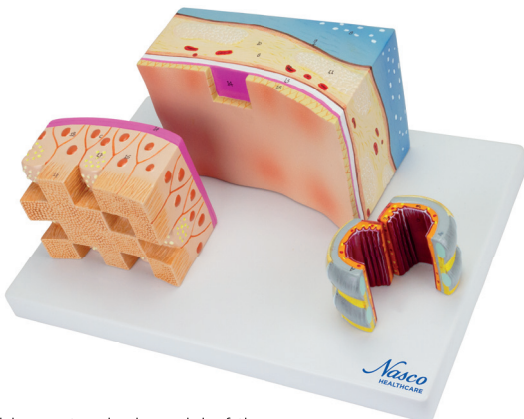
- The model comes with a polymer base
- **Weight:** 4.4 lbs.
- **Dimensions (Inches):** 15.75 x 10.24 x 4.72

Micro Anatomy of Trachea Section

MG31097



Technologies available



This anatomical model of the trachea presents three models at different scales, all mounted on a single base, for a detailed study of tracheal anatomy. It includes a 3x life-size cross-section of the trachea, sectioned longitudinally for internal visualization, a 10x magnification of the anterior wall showing the different layers, and a 100x magnification of the pseudostratified ciliated epithelium, displaying cellular details.

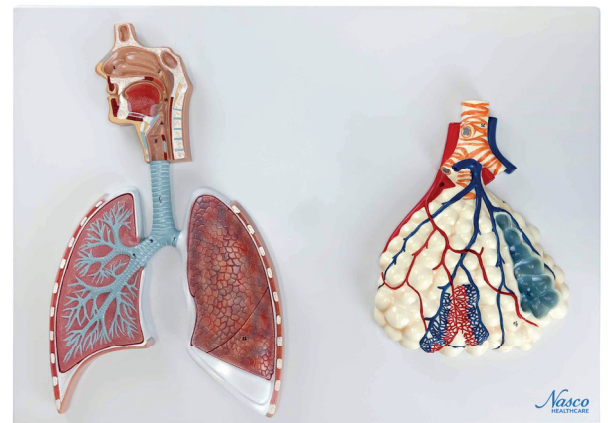
Features

- The model comes with a polymer base
- **Weight:** 2.2 lbs.
- **Dimensions (Inches):** 12.99 x 9.06 x 5.12

Respiratory System with Alveoli, 150 Times Enlarged

MG31336

This detailed anatomical model presents the human respiratory system, including the upper respiratory tract sectioned in the midsagittal plane, showing the oro-nasal cavity, larynx, trachea, primary bronchi, and bronchial tree. A special highlight is given to a pulmonary alveolus enlarged 150 times its natural size, revealing internal details and blood vessels.



Features

- The model comes with a polymer base
- **Weight:** 1.1 lbs.
- **Dimensions (Inches):** 15.75 x 10.24 x 3.15



Technologies available

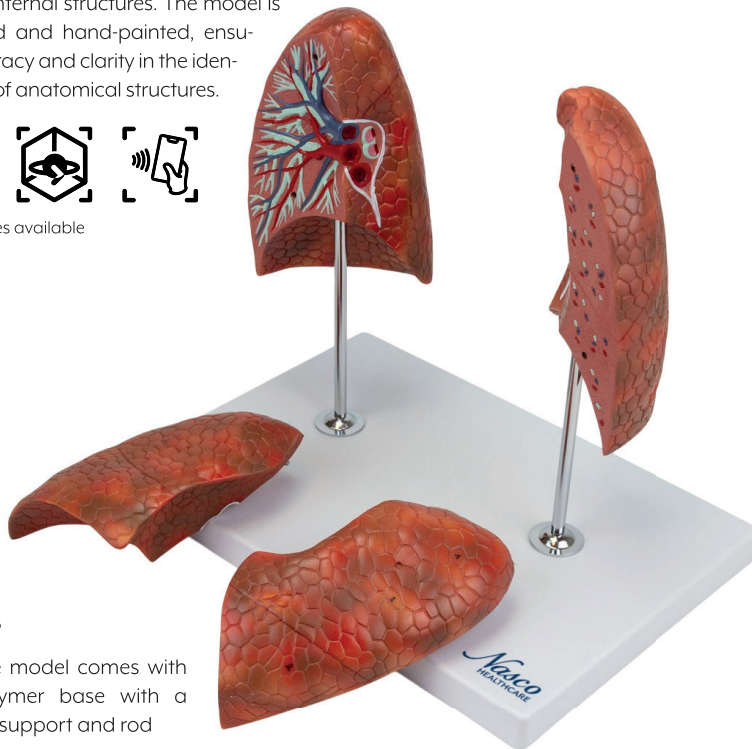
Lung Natural Size, 4 Parts

MG29786

This anatomical model represents the right and left lungs at life size, showing in detail the pulmonary structure, hilar structure, and pulmonary lobes (3 on the right and 2 on the left). It is presented in a detachable frontal section, mounted on a polymer base with a support and metal rod, facilitating handling and the study of internal structures. The model is numbered and hand-painted, ensuring accuracy and clarity in the identification of anatomical structures.



Technologies available



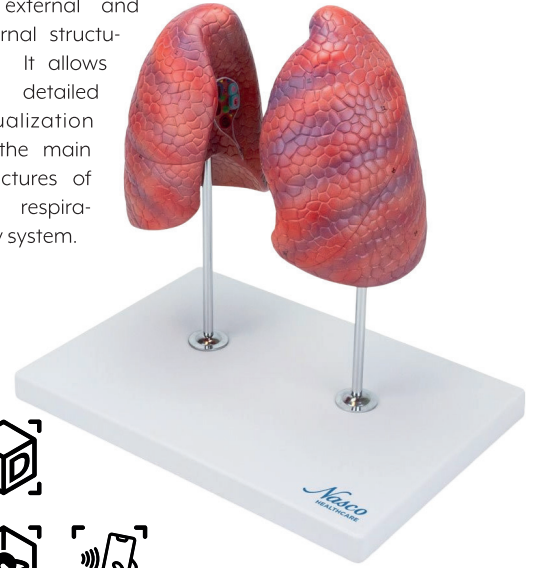
Features

- The model comes with a polymer base with a metal support and rod
- **Weight:** 4.4 lbs.
- **Dimensions (Inches):** 12.4 x 12.8 x 8.86

Lung Natural Size, 2 Parts

MG30887

This anatomical model represents human lungs at life size, divided into two parts and mounted on a base, offering a realistic representation of external and internal structures. It allows for detailed visualization of the main structures of the respiratory system.



Technologies available

Features

- The model comes with a polymer base with a metal support and rod
- **Weight:** 3.3 lbs.
- **Dimensions (Inches):** 12.99 x 9.06 x 12.2

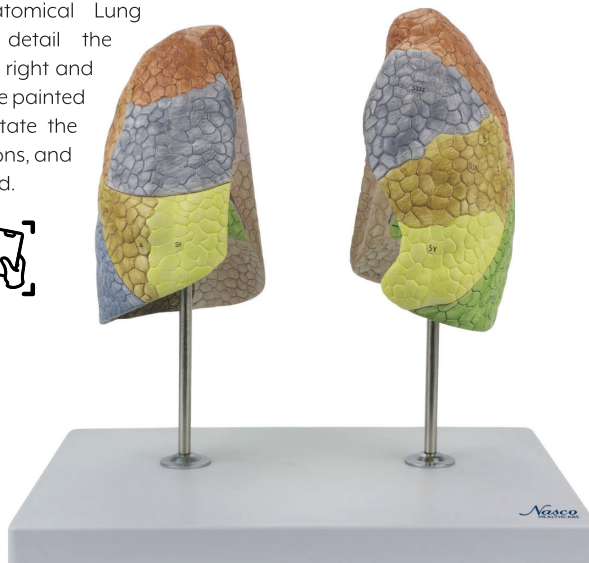
Segmented Lung

MG30886

Life-size Segmented Anatomical Lung Model, representing in detail the segmental anatomy of the right and left lungs. The lung lobes are painted in different colors to facilitate the identification of their locations, and the segments are numbered.



Technologies available



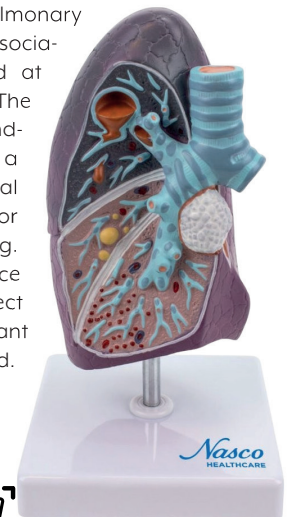
Features

- The model comes with a polymer base with a metal support and rod
- **Weight:** 3.3 lbs.
- **Dimensions (Inches):** 12.99 x 9.06 x 12.2

Lung with Pathology

MG30885

A detailed study of pulmonary structures and various associated pathologies, presented at 1.5 times the natural size. The model is meticulously hand-painted and mounted on a polymer base with a metal support and rod, allowing for easy viewing and handling. The darkened surface demonstrates the visual effect of smoking, and a malignant tumor is accurately displayed.



Technologies available

Features

- The model comes with a polymer base with a metal support and rod
- **Weight:** 1.1 lbs.
- **Dimensions (Inches):** 4.33 x 4.33 x 7.87

Bronchial Tree with Larynx, 3 Parts

MG20231

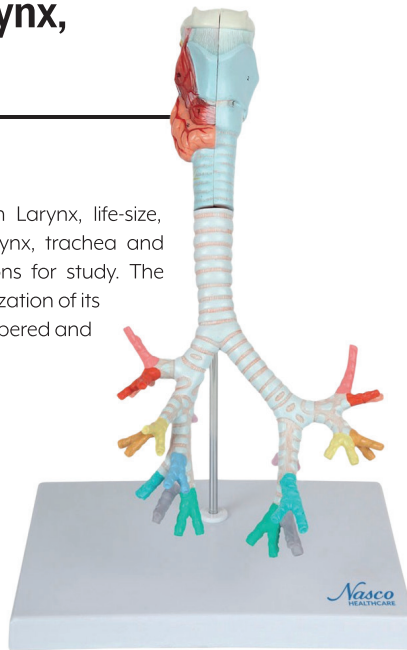
Anatomical Model of the Bronchial Tree with Larynx, life-size, presents the anatomical structures of the larynx, trachea and bronchial tree, numbered in 50 specific regions for study. The larynx is dismountable, allowing detailed visualization of its internal structure. Important structures are numbered and colored for easier understanding.



Technologies available

Features

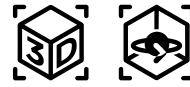
- The model comes with a polymer base with a metal support and rod
- **Weight:** 2.2 lbs.
- **Dimensions (Inches):** 13.39 x 8.66 x 5.51



Bronchial Tree

MG29764

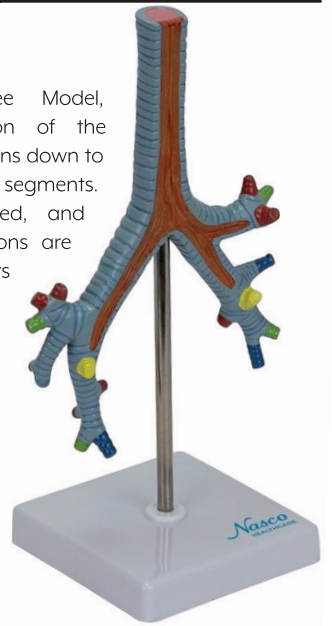
Life-size Bronchial Tree Model, showing the bifurcation of the trachea and its subdivisions down to the bronchopulmonary segments. Structures are numbered, and segments and subdivisions are indicated in didactic colors for easier understanding.



Technologies available

Features

- The model comes with a polymer base with a metal support and rod
- **Weight:** 1.1 lbs.
- **Dimensions (Inches):** 5.91 x 8.66 x 10.24



Pulmonary Lobule with Blood Vessels

MG13129

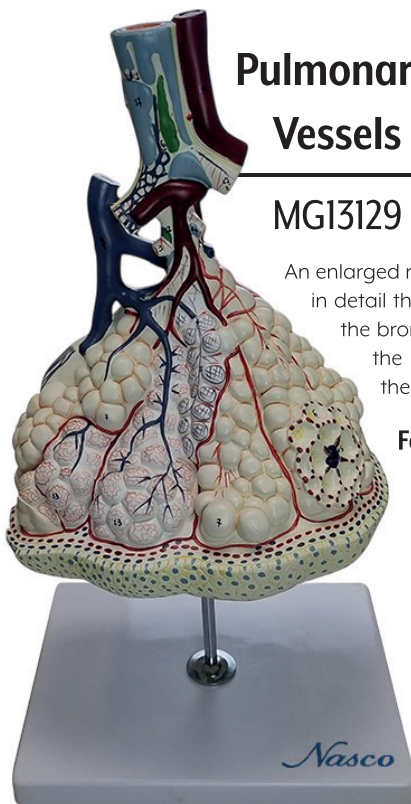
An enlarged representation of a pulmonary lobule, exhibiting in detail the arterial and venous circulation, in addition to the bronchial branches. It presents a section revealing the alveolar duct, allowing internal visualization of the alveolar structures.

Features

- The model comes with a polymer base with a metal support and rod
- **Weight:** 4.4 lbs.
- **Dimensions (Inches):** 11.02 x 8.27 x 5.67



Technologies available



Pulmonary Alveoli

MG20099



Technologies available

A magnified representation (approximately 1000 times) of a boundary alveolus, richly detailed and hand-painted, showing the alveolar wall, blood vessels, epithelial covering, and elastic and muscular elements. The separation between arterial and venous vessels is clearly visible at this scale.

Features

- The model comes with a polymer base with a metal support and rod
- **Weight:** 4.4 lbs.
- **Dimensions (Inches):** 6.3 x 8.27 x 3.15



Bronchial Tree with Pathology

MG31098

This detailed anatomical model represents a section of the bronchial tree, magnified 10 times its natural size, exhibiting two important pathologies: bronchitis and bronchiectasis. It is mounted on a polymer base with a metal support and rod, allowing for easy visualization and handling. Hand-painting and numbering of the structures ensure the precise identification of each component.

Features

- The model comes with a polymer base with a metal support and rod
- **Weight:** 1.1 lbs.
- **Dimensions (Inches):** 4.33 x 6.69 x 8.66



Technologies available

