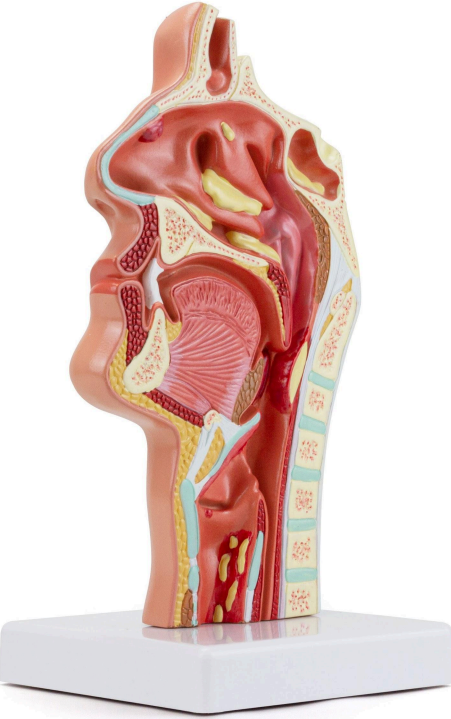


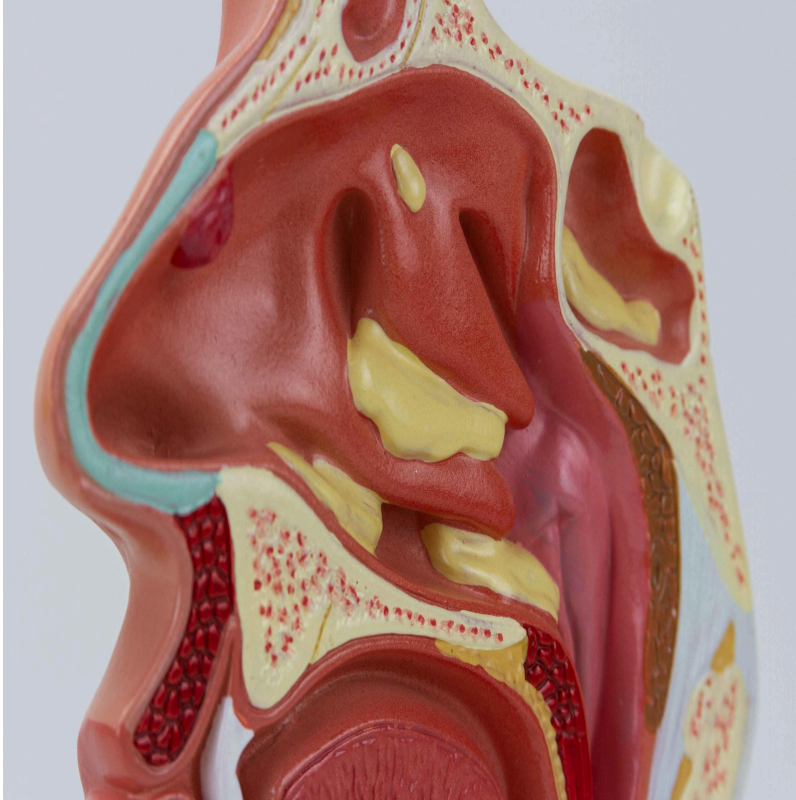


MG35531 | SINUS MEDIAN SECTION WITH PATHOLOGY



Nasco
HEALTHCARE





This life-size model offers a detailed cross-section of the nasal and oral passages, designed to highlight common pathologies in these regions. It is a fundamental tool for deepening the understanding of conditions affecting the upper respiratory tract and oral cavity.

Applications:

Ideal for educational and clinical settings, this model is suitable for healthcare professionals and students seeking an in-depth understanding of anatomical structures and their pathological alterations. It facilitates the study and demonstration of conditions that can impact these areas, making it perfect for training and education in anatomy, physiology, and pathophysiology.

Technical Differentiators:

The model features a detailed cross-sectional representation of the nasal and oral passages, allowing for clear visualization of common pathologies. Its design aims to offer a practical and visual understanding of the structures and their alterations.

3D Technology and Augmented Reality:

Our anatomical models offer an innovative visual complement through informative cards that activate 3D models viewable in augmented reality (A.R.). This exclusive interactive platform stimulates learning, allowing for comparative analysis of anatomical structures and offering



opportunities for continuing education in anatomy, physiology, and pathophysiology.

Technical Specifications:

Scale: Life-size.

Customizable Skin Tones:

This anatomical model offers the option to choose between three skin tones to better represent human diversity and meet different educational and clinical needs. It is possible to choose between light skin, medium skin tone, and dark skin, providing greater realism and inclusion during training and demonstrations.

Smart Tags:

Designed to provide comprehensive training in the healthcare field, with interactive simulations covering Throat exams. This solution assists in the development of diagnostic skills in different clinical scenarios, allowing professionals and students to explore and enhance their skills with greater safety and accuracy.

Throat exams: Conduct 6 realistic diagnostic exams.

- Normal
- Oral Cancer (Benign)
- Oral Cancer (Malignant)
- Oral Dysplasia
- Pharyngitis
- Tonsillitis

Virtual Patient Monitor: Provides an immersive and realistic training environment for healthcare students. It allows instructors to customize parameters for various vital signs, empowering students to interpret signals, develop critical thinking, and enhance their clinical reasoning skills through realistic scenarios.

Customizable Vital Signs

- Blood Pressure
- SpO2
- Heart Rate

ECG Interpretation: Train on 18 diverse ECG scenarios, including: Atrial Fibrillation, Ventricular Tachycardia and Heart Blocks. The monitor also simulates synchronized pulses with ECG for truly realistic cardiology training.

ECG Patterns

- Sinus Rhythm
- Atrial Extrasystole
- Atrial Flutter
- Atrial Fibrillation



- Paroxysmal Supraventricular Tachycardia (PSVT)
- Ventricular Extrasystole
- Ventricular Tachycardia (VT)
- Ventricular Fibrillation (VF)
- First-Degree Atrioventricular Block (AVB)
- Second-Degree Atrioventricular Block
- Third-Degree Atrioventricular Block (Complete Block)
- Long QT Syndrome
- ST Segment Elevation
- ST Segment Depression
- T Wave Inversion
- Left Ventricular Hypertrophy (LVH)
- Right Ventricular Hypertrophy (RVH)
- Wolff-Parkinson-White Syndrome (WPW)

Breathing Patterns

- Normal
- Dyspnea
- Apnea
- Cheyne-Stokes
- Biot
- Kussmaul

About Anatomical Models:

They are developed with resin replication technology, addressing the scarcity of natural anatomical specimens for teaching and research. They present all the essential morphological characteristics with excellent cost-benefit, resistance, manual painting, and numbering for precise identification of structures.

List of all visible structures:

- frontal sinus
- nasal cavity
- accumulation of secretion
- nasopharynx
- auditory tube opening to larynx
- pharyngeal tonsil
- soft palate
- uvula
- palatine tonsil
- cervical vertebra



- intervertebral disc
- accumulation of secretion
- vocal fold inflammation
- laryngopharynx
- tongue
- lips
- teeth
- hard palate
- maxillary sinus