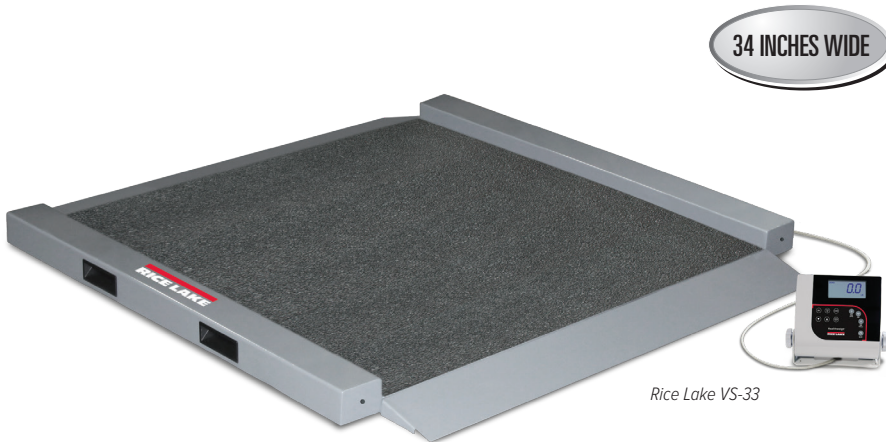


Rice Lake VS-33



Rice Lake VS-33

Standard Features

- Dual ramp
- Nonslip platform
- Push-button LCD display
- Motiontrap™ movement compensation technology
- Unit of measure toggle or locking
- Communication via USB
- Tare function
- Hold function
- Factory calibrated

Specifications

Capacity:

1,000 × 0.2 lb (450 × 0.1 kg)

Platform Dimensions Without Ramps:

(W × L × H) 34.0 × 34.0 × 2.22 in

Power:

9 VDC, provided by six AA alkaline batteries (included) or AC adapter (optional)

Battery Type:

Six AA alkaline (included)

Battery Use:

25 hours continuous use with batteries
Automatic power-off can be configured

Operating Temperature:

50 °F to 104 °F (14 °C to 40 °C)

Cable Length:

9 ft (2.7 m) cable between scale base and indicator

Display:

5-digit LCD display, 0.75 in (1.9 mm) digit height

Approvals:

c-Met, E113986

Warranty:

Two-year limited

Approvals



Part Number/Price

Part #	Model #	Capacity	Price
204400	Rice Lake VS-33 Double Ramp	1,000 × 0.2 lb (450 × 0.1 kg) with USB	Consult

Shipping Weight

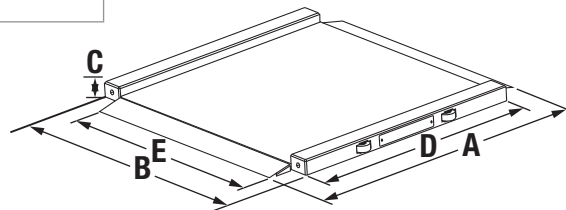
Part #	Model #	L (in)	W (in)	H (in)	Package Wgt. (lb)	Dim Wgt. (lb)	Shipping Wgt. (lb)
204400	Rice Lake VS-33 Double Ramp	43	43	11	162	147	162

Options/Accessories

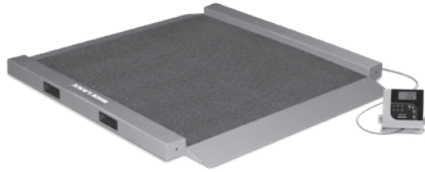
Part #	Description	Price
79074	Cable, USB 6 ft USB-A (male) to USB-B (male)	Consult
217091	Cable, Communication DB9 (female) to RJ45 (male), 4 conductor	Consult
186830	Cable, RS232 scale to printer, 6 ft, 25-pin D-Sub (male) to RJ45	Consult

Dimensions

	Inches	Centimeters
A	41.0	104.1
B	40.0	101.6
C	2.2	5.6
D	34.0	86.4
E	34.0	86.4



LARGE ANIMAL
SCALES



Portable Bariatric/Wheelchair Scale Dual Ramp
Model RL-350-6

Part Number/Price

Ref#	Part#	Description	Price
	100719	RS-232 serial cable	Consult
3	105373	Wheel kit (includes wheel, torque nut, screw, scotch mate hoops)	Consult
4	106953	Cable assembly	Consult
5	113030	Ramp	Consult
6	113031	Junction box cover	Consult
7	113033	Handle insert	Consult
8	114614	Foot	Consult
9	14626	Nut, kep 8-32NC hex	Consult
10	14839	Screw, mach 6-32NC x 1/4	Consult
11	14857	Screw, mach 8-32NC x 1/4	Consult
12	14862	Screw, mach 8-32NC x 3/8	Consult
14	58983	Cord grip	Consult
15	84838	Load cell	Consult
16	88958	Junction box board	Consult

Note: See indicator parts on page 214

(See Diagram Portable Bariatric/Wheelchair Scale Dual Ramp)

