

DUS 60

Ultrasound



Intuitive Design



Compact & Versatile



12.1" LCD Monitor

The DUS 60 is an impressive black & white compact ultrasound system, providing superb value and the best quality across the entire range of applications, with enhanced support of PW imaging to meet the higher diagnostic requirements.

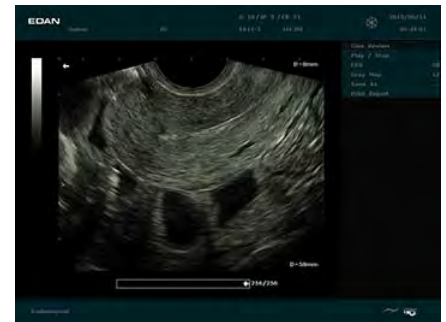
Features:

- Two USB ports
- Backlit keyboard
- DICOM 3.0 included
- Two transducer connectors
- 504 MB built-in image storage
- 256-frame cine loop memory
- Image Processing function
- Measurement & calculation software package



Imaging Modes: B mode, M mode, 2B, 4B, B+M, and PW Doppler

Applications: Abdomen, Obstetrics, Gynecology, Small Parts, Musculoskeletal, Cardiology Peripheral Vascular, Urology



Probe Selection



C361-2

APPLICATION: Abdomen, OB, Gynecology, Urology

TRANSDUCER: Convex

BANDWIDTH (MHz): 1.5-7 (-20dB), 2-6 (-6dB)



L743-2

APPLICATION: Small Parts, vascular

TRANSDUCER: Linear

BANDWIDTH (MHz): 3-11 (-20dB), 5-10 (-6dB)



L761-2

APPLICATION: Small Parts, Musculoskeletal, Vascular

TRANSDUCER: Linear

BANDWIDTH (MHz): 3-11 (-20dB), 5-10 (-6dB)



C611-2

APPLICATION: Pediatric, Pediatric Cardiac

TRANSDUCER: Micro-Convex

BANDWIDTH (MHz): 3.5-12 (-20dB), 5-8 (-6dB)



E611-2

APPLICATION: OB, Gynecology, Urology

TRANSDUCER: Transvaginal

BANDWIDTH (MHz): 3-11.5 (-20dB), 5-8 (-6dB)



E741-2

APPLICATION: Urology

TRANSDUCER: Endorectal

BANDWIDTH (MHz): 3-11.5 (-20dB), 5-10 (-6dB)

Included Accessories

- Rechargeable Lithium-Ion Battery (5000mAh) — **01.21.064356**
- Power Cord (USA Standard) — **11.13.36015**
- Carrying Case
- Ultrasound Gel (250g)

Optional Accessories

- MT-805 Luxury Mobile Trolley — **MT-805**
- SONY UP-X898MD, S-Video/USB interface. Black and white video graphic printer — **UP-X898MD**

Specifications

PHYSICAL SPECIFICATION

Dimension:
32 cm×22 cm×33 cm
Weight: 7.1 kg

DISPLAY

12.1" TFT-LCD monitor
Resolution: 1024 x 768
Imaging field size: 640 x 512
Video out size: 1024 x 680
Capture Size:
BMP, JPG, AVI, DCM 1024 x 768; FRM, CIN 640 x 512

BATTERY

Rechargeable lithium ion battery
Capacity: 5000mAh
Battery Life: 60 minutes
Max charging time: 8 hours

ELECTRICAL POWER

Voltage: 110V 240VAC
Frequency: 50/50 Hz
Power: 74.4w

IMAGING STORAGE

504MB for data storage
320GB hard drive
Storage:
224 static images as BMP format(memory)
Hard Drive Storage:
145,635 static images as BMP format
Maximum Clip:
B mode: 256 frames
M mode: 23s
PW Doppler mode: 10s

IMAGING PARAMETERS

B-mode

Image Type :
Detail/Soft/HContrast/
Penetration)
Zoom:
7 levels, x1.44, 96, x2.56, x4.0, x5.76, x9.0, x16.0 (available on live state); 7 levels: x1.31, x1.78, x2.56, x4.0, x7.11, x10.24, x16.0 (available on freeze state)
Depth: 1.9-32.4 cm
Frequency:
2.0 15.0MHz
eSRI: 0 8
Rejection: 0-7
Scan Angle : 0-3
Gain: 0-13 0dB, 2 dB/step
TGC: 8 segments
Dynamic Range:
30-150 dB
4 dB/step

Scan Mode: Hiden/HiFR
Max Frame rate : 244 f/s
Map : 0-14
Frame Persist: 0-7
Focus Position: 0-15
Focus Number: 1-4
Pseudo color : 6 types
H Reverse: On/Off
V Reverse: On/Off
90° rotation: 0/1/2/3
B/W Invert: On/Off
Spatial compounding:
On/Off (max 3 angles)
Display format:
single(B),dual(B+B)
Quad 4B: (B, 2B, 4B)

M-mode

Sweep speed: 0-3
Line Average : 0-7
Gray Map : 0-14
Pseudo Color : 6 types
Gain: 0 13 0dB, 2 dB/step
Frequency : 2.0 15.0MHz
(3 fundamental and 2 harmonic frequencies)
Dynamic range:
30-150 dB
step 4 dB/step
B/M Display : U/D, L/R

Pulsed Wave Doppler

Flow Type : H Flow/M Flow/L Flow
HPRF : On/Off
Duplex and Triplex displays
Frequency: 2.5-8.0 MHz
PRF: 16 levels 1-15 kHz
Gain: 1-80dB, 1dB/step
Dynamic range: 30-90 dB, 2 dB/step
Wall Filter: 0-3
Sweep Speed:
0(10.3 s), 1(7.95 s),
2(5.19 s), 3(3.97 s),
4(2.75 s), 5(1.53 s)
Baseline: 0-6
Correct Angle: -79°, 1° /step
Quick Angle:
-79°/-60°/-30°/0°/30°/60°/79°
Steer: 0°, ± 10°
Invert : On/Off
Volume: 0-7
Pseudo Color : 6 types
Sample Volume :
16 levels, 0.5-20 mm

CINE REVIEW

Frame by frame manual review
Auto playback
Start frame and end frame are selectable for cine loop review
Maximum cine memory is up to:
B mode: 256 frame
M mode: 23s
PW Doppler mode: 10s