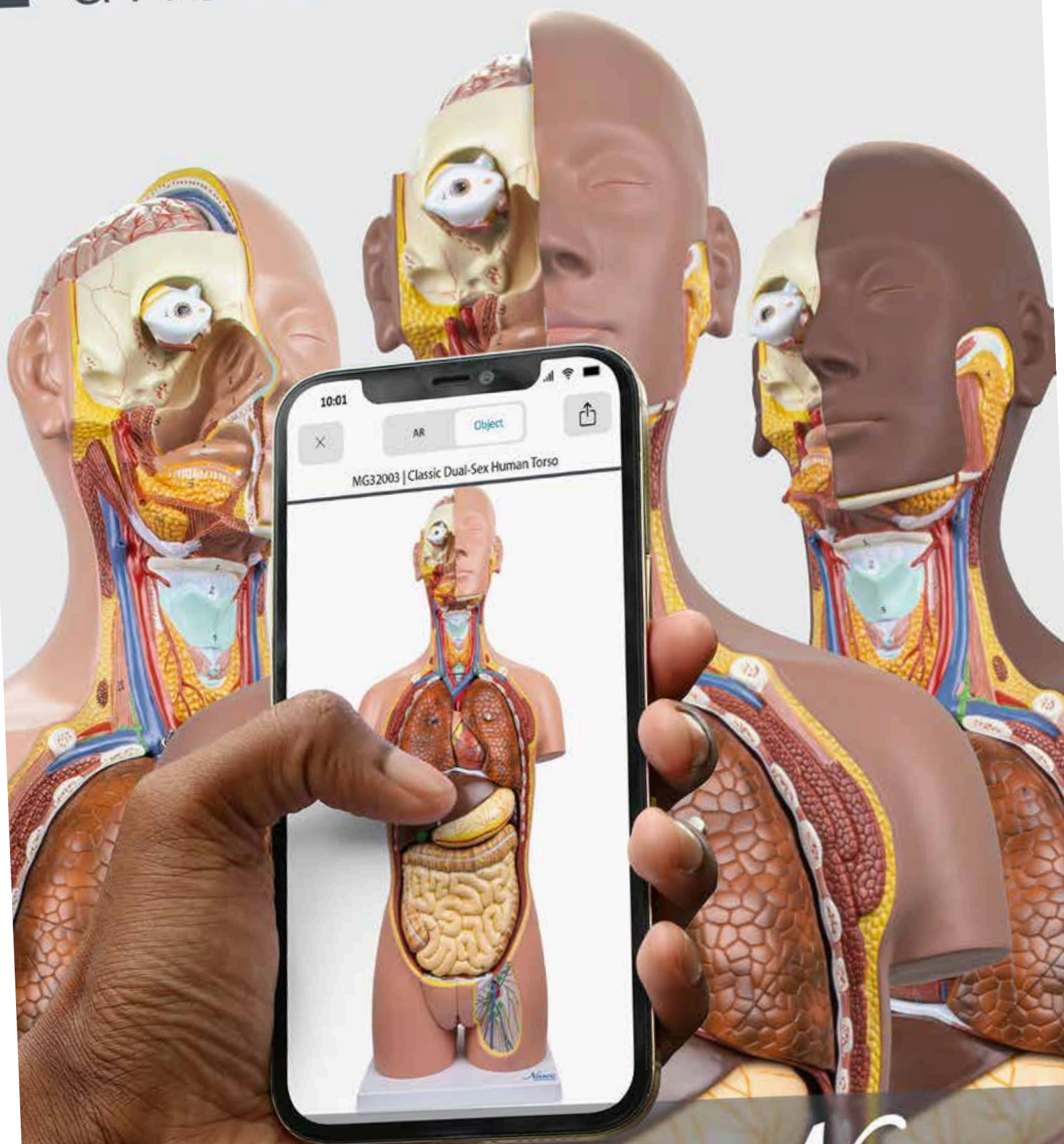


anatomical models



Nasco
HEALTHCARE

Be READY

Nasco Healthcare started from humble beginnings in 1941 with a single product. Today, we have **the largest range of medical simulation products in the world**, but our original mission remains true.

That mission is to prepare frontline healthcare workers, military medics and emergency/rescue personnel to **Be READY**. Ready to deliver optimal patient outcomes and save lives whenever and wherever they are called. Our vision is to create a world with better patient outcomes and fewer lives lost.

We want to do our part to ensure that our everyday heroes have the proper training to be at their best the moment they're called upon. This means offering manikins that realistically simulate clinical, emergency/rescue, and trauma scenarios. Whether it's neonatal care, CPR training, or a fireman drag, our products prepare our heroes for critical, in-the-moment decisions.

We're proud to stand behind products that are designed in the USA to ISO9001 and backed by an up to 5-year warranty.

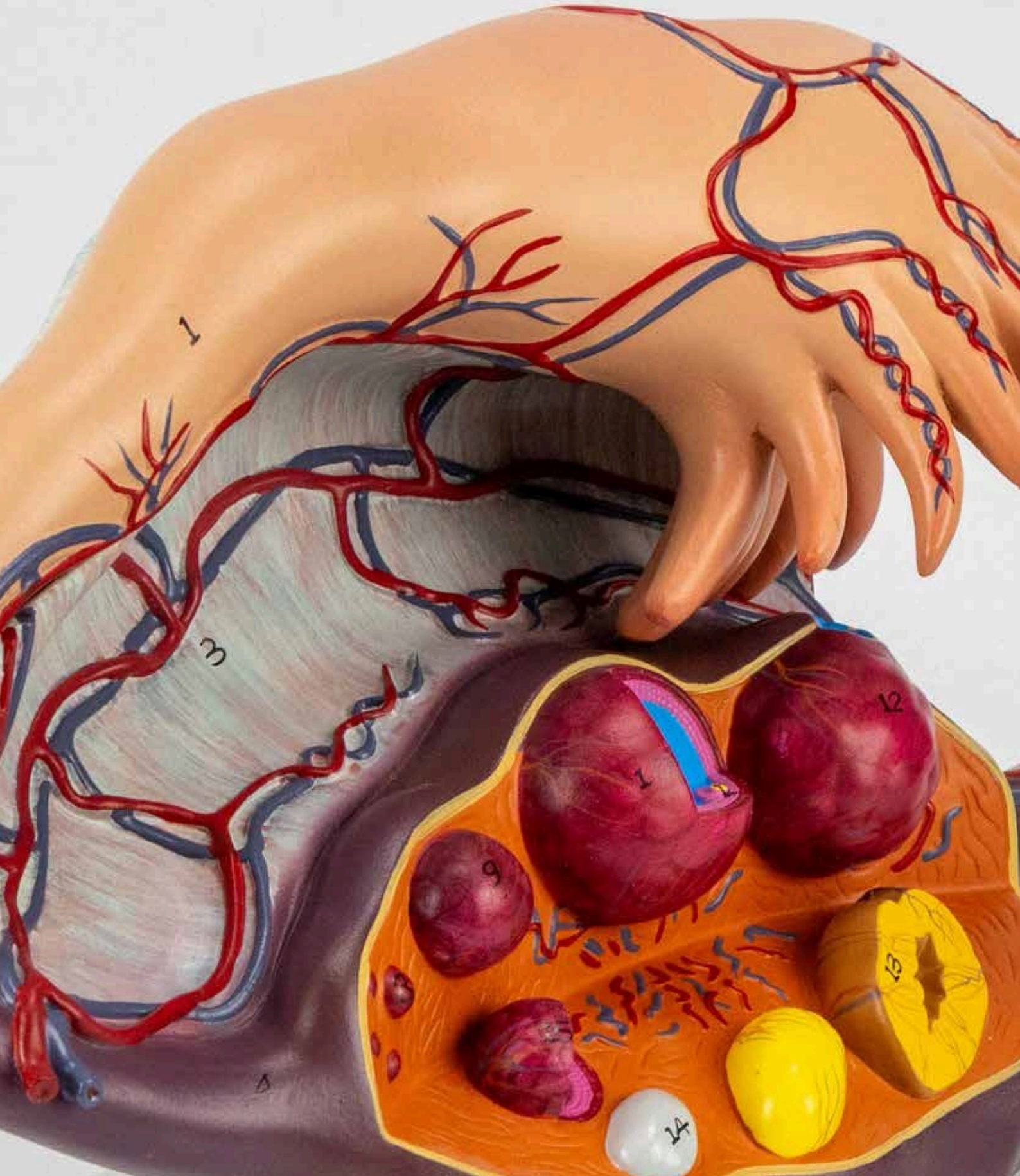
We invite you to explore our catalog that's full of advanced simulation, emergency, rescue and nursing training solutions. We are committed to bringing you innovative products across all fidelity levels.

Nasco Healthcare wants to be your partner so you can **Be READY**.

Sincerely,

The Nasco Healthcare Team



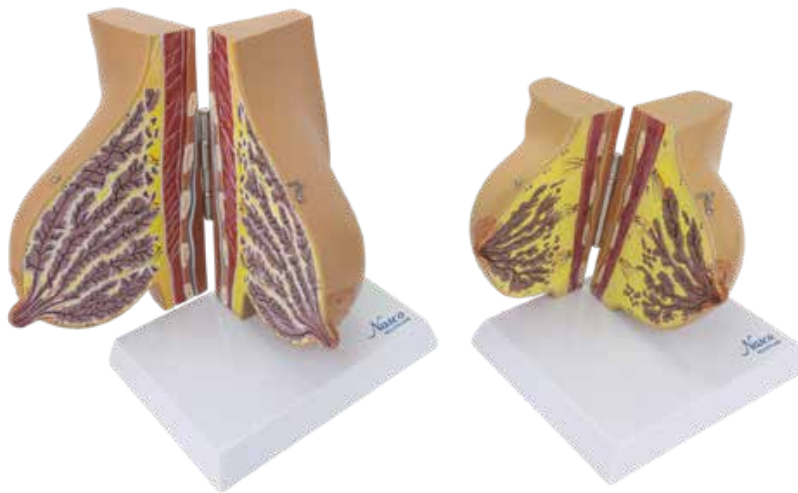


Reproductive System

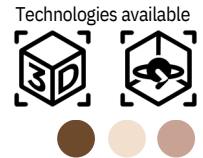
male and female

- Resin approved in toxicological tests
- High quality natural molding
- Made of stable and unbreakable synthetic material
- Original replicas
- Numbered and hand painted
- Includes information card with related structures

FEMALE LACTATING & NON-LACTATING BREAST MODELS, SET OF 2



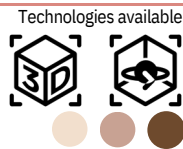
SKU: MG34670
Model size: 13.4x 7.1 x 11.8 in.
Model weight: 4.4 lbs.



This set includes two life-size breast models representing the sectional structure of both lactating and nonlactating women. Each model consists of two parts that open to reveal numbered internal structures, allowing for a detailed study of anatomical differences.



LACTATING BREAST MODEL

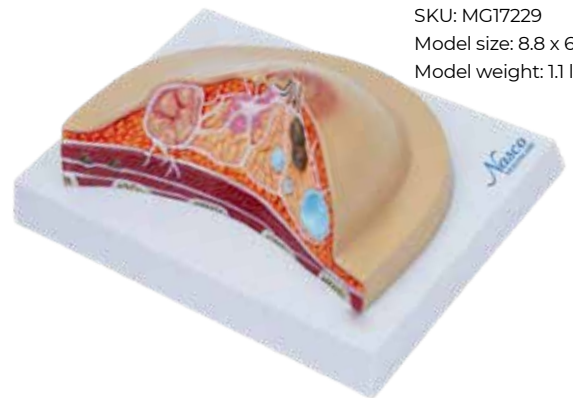
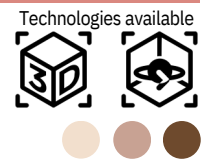


This life-size breast model shows the sectional structure of the breast of lactating women. It consists of two parts that can be opened to show the numbered internal structures.

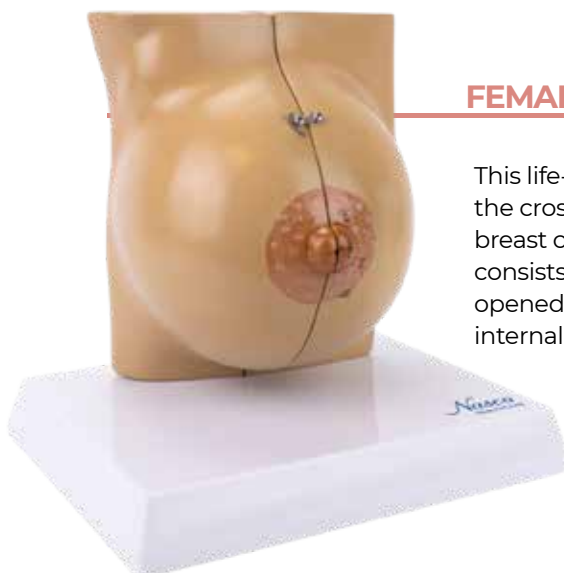
SKU: MG29239
Model size: 8.7x 7.1 x 5.7 in.
Model weight: 2.2 lbs.

BREAST CROSS-SECTION WITH PATHOLOGIES MODEL

The life-size breast cross-section model illustrates common pathologies such as adenocarcinoma, cysts, fibroadenoma, and infiltrating scirrhous carcinoma. The model also shows breast structures such as the suspensory ligament, adipose tissue, lymph nodes, muscles and ribs.

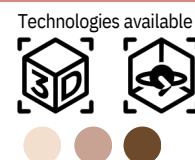


SKU: MG17229
Model size: 8.8 x 6.3 x 3 in.
Model weight: 1.1 lbs.



FEMALE NON-LACTATING BREAST MODEL

This life-size breast model shows the cross-sectional structure of the breast of non-lactating women. It consists of 2 parts that can be opened to show the numbered internal structures.



SKU: MG29240
Model size: 6.7x 7.1 x 5.5 in.
Model weight: 2.2 lbs.

FEMALE REPRODUCTIVE ORGAN SECTION, 1.5X ENLARGED

Technologies available



A model 1.5 times life-size and shows a dissected view of the vagina, cervix, uterus and ovaries with follicles at various stages of development.



SKU: MG31101
Model size: 6.7 x 5.9 x 8.7 in.
Model weight: 4.4 lbs.

UTERUS WITH OVARY MODEL, 2-PARTS

Technologies available



The model clearly shows the healthy uterine ovary in 2 parts, connected by a magnet. It allows observation of the entire structure of the uterus, which makes it an ideal piece for use in educational institutions or for demonstration in medical offices.



SKU: MG36026
Model size: 9.5 x 7.9 x 4.7 in.
Model weight: 2.2 lbs.

HEALTHY & PATHOLOGICAL UTERUS MODEL

Technologies available



SKU: MG35528
Model size: 10.2 x 15.2 x 10.2 in.
Model weight: 2.2 lbs.

Life-size model with the ovary and healthy uterus in 2 parts, connected by a magnet and another with multiple pathologies: adhesions, carcinomas in four common areas, cysts, endometriosis, fibroids, pedunculated fibroid tumor, polyps and salpingitis.



UTERUS & OVARY WITH PATHOLOGIES MODEL

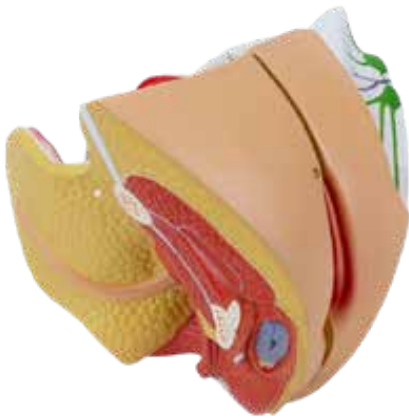
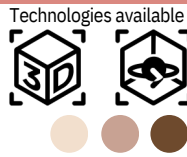
Technologies available



Full-size cross-section model illustrating various pathologies, some of which include: adhesions, carcinoma in four common areas, cysts, endometriosis, fibroids, pedunculated fibroid tumor, polyps and salpingitis.

SKU: MG29789
Model size: 8.8 x 6.3 x 2.5 in.
Model weight: 2.2 lbs.

FEMALE GENITAL ORGAN MODEL, 4 PARTS



A life-size model composed of four parts in a detailed representation of the female reproductive system seen through a midsagittal dissection. Removable parts include a 2-part uterus and 2 halves of the female reproductive system with details of its internal structure. Made with long-lasting synthetic material.

SKU: MG29948
Model size: 5.7 x 4.5 x 5.3 in.
Model weight: 1.1 lbs.

OVARY MODEL, 5X ENLARGED, 2 PARTS



SKU: MG23170
Model size: 13 x 9.1 x 8.7 in.
Model weight: 2.2 lbs.

A model with, five times life-size shows the anatomy of the fallopian tube and ovary. The follicles are shown at different stages of maturation, from the primary ovarian follicle to the corpus albicans.

A primary follicle in cross-section, illustrates the internal structure, the oocyte, the zona pellucida and the granulosa cells.

Important anatomical structures are numbered and indicated for easy understanding.



FEMALE GENITAL ORGAN WITH PATHOLOGY MODEL, 2 PARTS



SKU: MG29947
Model size: 6.9 x 5.9 x 8.7 in.
Model weight: 1.1 lbs.



Life-size model, sectioned along the frontal plane and divided into two parts, shows the most important pathologies of the female reproductive system. Four types of fibroid tumors: intramural, subserosal, submucosal and broad ligament myoma. Endometrial carcinoma and cervical carcinoma are shown. Additional pathologies: uterine polyps, salpingitis, oophorocystosis, endometriosis and candidal vaginitis.

MALE REPRODUCTIVE ORGAN SECTION MODEL



SKU: MG31102
Model size: 15.8 x 10.2 x 3.9 in.
Model weight: 1.1 lbs.



Life-size model showing all organs of the male reproductive system: The penis, prostate and urinary bladder are sectioned longitudinally to reveal their inner anatomy; The testicle is seen partially in a cut to expose all of its internal structures. The model also includes an enlarged and detailed cross-section of the testis; The testicular septum, straight and twisted seminiferous tubules are shown accurately. Made with long-lasting synthetic material.

TESTICLE MODEL, 3.5X ENLARGED

Technologies available



SKU: MG31912
Model size: 4.3 x 4.3 x 7.9 in.
Model weight: 1.1 lbs.

A model 3-1/2 life-size that shows the sagittal and medial section of the human testicle including epididymis, vas deferens, seminiferous and testicular tubules. Important anatomical structures are numbered and indicated in different colors for easy understanding.



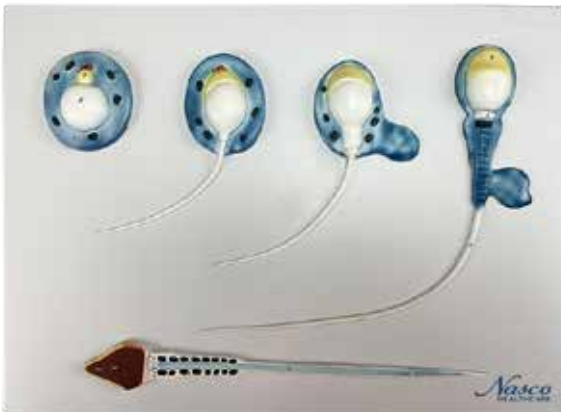
SPERMATOGENESIS EVOLUTION PROCESS MODEL, 10,000X ENLARGED

Technologies available



SKU: MG30750
Model size: 20.9 x 15 x 2.6 in.
Model weight: 1.1 lbs.

Detailed model shows the evolution of spermatogenesis, from spermatid to mature spermatozoon, magnified approximately 10,000 times its natural size. It presents the stages of the process in a didactic manner, with numbering and hand-painting.



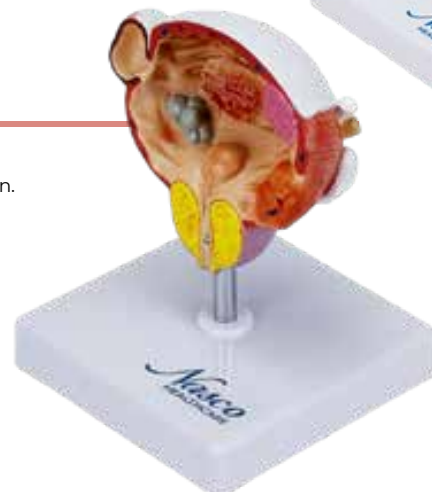
BLADDER AND PROSTATE DISEASES MODEL

Technologies available



SKU: MG22730
Model size: 4.3 x 4.3 x 6.3 in.
Model weight: 1.1 lbs.

Life-size model shows a frontal section revealing five different pathologies: bladder stones, cystitis, diverticulum, benign prostatic hyperplasia (BPH), and bladder tumor in three distinct stages. Anatomical structures are numbered and hand-painted in didactic colors for easy understanding.



MALE GENITAL ORGAN MODEL, 4 PARTS

Technologies available



SKU: MG29950
Model size: 7.1 x 4.7 x 5.1 in.
Model weight: 1.1 lbs.

This detailed anatomical model represents the male reproductive system in four removable parts, including the penis (with medial and transverse sections), bladder, urethra, prostate, seminal vesicles, ejaculatory ducts, and vas deferens. The bladder is sectionable, allowing visualization of its internal structures. The model is ideal for the study of male anatomy.



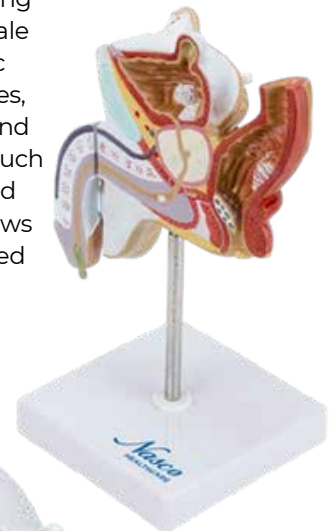
MALE GENITAL ORGAN WITH PATHOLOGY MODEL, 2 PARTS

Technologies available



SKU: MG29949
Model size: 6.9 x 5.9 x 8.7 in.
Model weight: 1.1 lbs.

Life-size two-part model showing the internal structure of the male urogenital system with specific pathologies including gallstones, diverticulum, bladder cancer and sexually transmitted diseases such as condyloma acuminatum and gonorrhea. The model also shows the rectum and anus with mixed hemorrhoids and carcinomas.



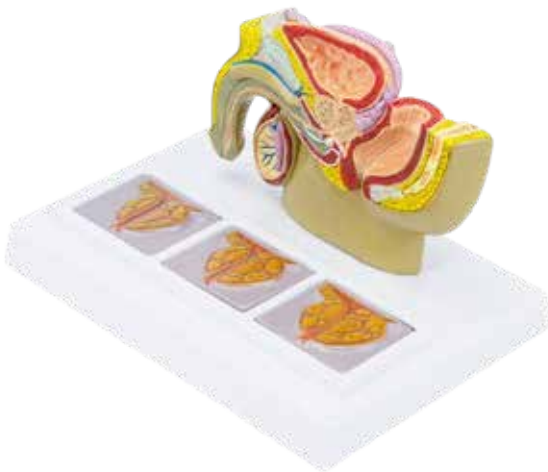
MALE PELVIS WITH PROSTATE MODEL, HALF-SIZE

Technologies available



SKU: MG34916
Model size: 8.8 x 6.3 x 4.8 in.
Model weight: 2.2 lbs.

Reduced size, mid-sagittal cross-section of the male pelvis. The base shows three-dimensional cross-sections of the prostate gland. The sections represent the stages (normal, moderate, advanced) of BPH (Benign Prostate Hyperplasia/Enlarged Prostate).



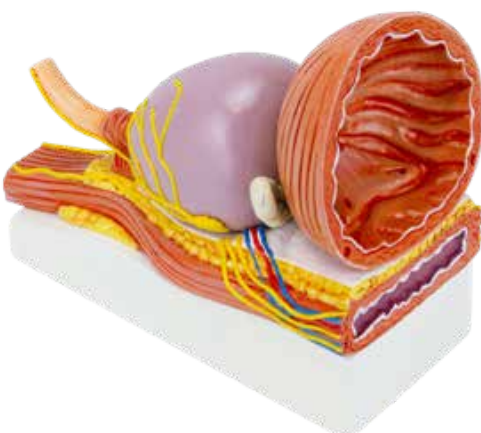
PROSTATE WITH PATHOLOGY MODEL

Technologies available



SKU: MG34924
Model size: 3.2 x 3.5 x 2.4 in.
Model weight: 1.1 lbs.

This model shows the shape of the bladder, prostate and seminal vesicular glands and their adjacent relationship. In addition, structures such as the detrusor, ureter and its opening, internal urethra, bladder triangle, urethra and ejaculatory ducts can also be observed.



PROSTATE MODEL, 3X ENLARGED, 2 PARTS

Technologies available



SKU: MG30753
Model size: 7.9 x 5.9 x 7.5 in.
Model weight: 2.2 lbs.

Model enlarged 3 times life-size showing the male urinary bladder with the prostate gland surrounding the urethra. The model is dissected medially to expose the internal and external structures of the bladder and prostate, including the ureter and urethral orifices, vas deferens, seminal gland, and ejaculatory duct. Important anatomical structures are numbered and indicated in different colors for easy understanding. Made with long-lasting synthetic material.



ENLARGED PROSTATE MODEL, 4 PARTS

Technologies available



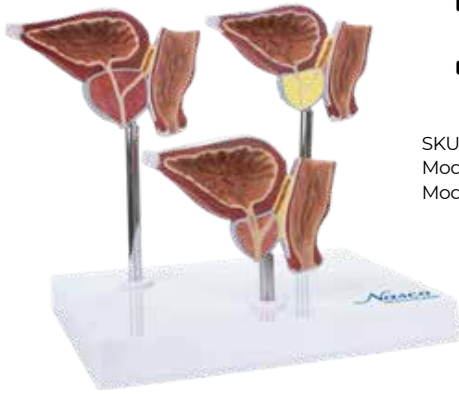
SKU: MG30752
Model size: 6.5 x 5.1 x 7.9 in.
Model weight: 2.2 lbs.

This anatomical model shows the prostate at 2x life-size, divided into 4 parts, allowing detailed visualization of its anatomy and relationship with the urinary bladder. Important structures are hand-numbered and painted for easy understanding.



NORMAL AND PATHOLOGICAL PROSTATE MODELS, 3 PARTS

Technologies available

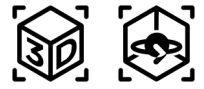


SKU: MG31153
Model size: 7.9 x 7.5 x 5.9 in.
Model weight: 1.1 lbs.

Model consisting of three sections of the prostate, including the rectum and urinary bladder. The first model shows the internal and external structures of a normal prostate. The second illustrates benign prostate hyperplasia, characterized by fibromuscular variation and epithelial predominance. The third model illustrates a prostatic adenocarcinoma. The 3 models are mounted on the same base. Made with long-lasting synthetic material

MALE PELVIS MODEL, MIDSECTION, 4 PARTS

Technologies available



This four-part anatomical model of a male pelvis provides a detailed representation of the male reproductive system, urinary system, vascular system, and muscle anatomy. One half of the genitalia is removable, allowing for a more in-depth study of the internal structures.

SKU: MG30140
Model size: 5.1 x 15.8 x 10.2 in.
Model weight: 4.4 lbs.



FEMALE PELVIS MODEL, MEDIAN SECTION, 2 PARTS

Technologies available



This mid-cut model shows all the important structures of the female pelvis. One half of the genitalia is removable, allowing for a more in-depth study of the internal structures.

FEMALE PELVIS MODEL, 6 PARTS

Technologies available



SKU: MG22962
Model size: 23.6 x 17.7 x 15.8 in.
Model weight: 33.1 lbs.

Life-size female pelvis, divided into 6 parts, demonstrating the internal organs ligaments, vessels, nerves and pelvic floor. The uterus, colon and bladder are easily removable. Two lumbar vertebrae are also shown.



SKU: MG30136
Model size: 5.1 x 15.8 x 10.2 in.
Model weight: 4.4 lbs.

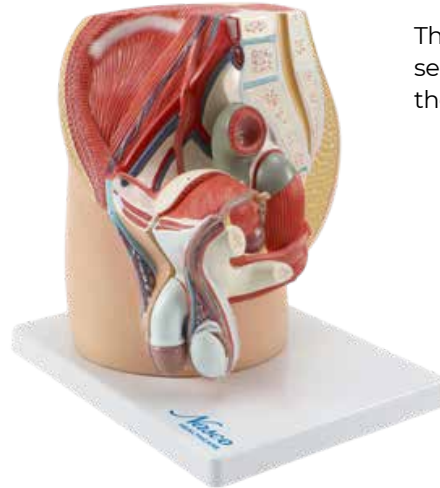
MALE PELVIS WITH INTERNAL ORGANS, 4 PARTS

Technologies available



SKU: MG30139
Model size: 11.8 x 7.9 x 10.8 in.
Model weight: 4.4 lbs.

Life-size model with 4 parts, represents the view through a median sagittal section of the pelvis. The internal structures of the male urogenital system are represented in detail. The moving parts include one half of the penis divided into a medial section and transverse sections, half of the male reproductive system with an open dissection of the testicle showing details of its internal structure.



MALE PELVIS MODEL, HALF-SIZE

Technologies available



SKU: MG17216
Model size: 7.2 x 1 x 5 in.
Model weight: 1.1 lbs.

This model is a half-sized, mid-sagittal cross-section of the male pelvis, shows the anatomy of the pelvis and testicles.



FEMALE PELVIS MODEL WITH INTERNAL ORGANS MODEL, 3 PARTS

Technologies available



SKU: MG30135
Model size: 11.8 x 7.9 x 10.8 in.
Model weight: 4.4 lbs.

Life-size three-part model showing an open dissection through the midsagittal section of the female pelvis. Internal structures of the female urogenital system are depicted in detail. Removable parts include half of the female reproductive system with the uterus opened to reveal a medial, cross-sectional view.



FEMALE PELVIS MODEL, HALF-SIZE

Technologies available



SKU: MG17215
Model size: 5.5 x 5.7 x 0.8 in.
Model weight: 4.4 lbs.

This female pelvis model is a half-sized, midsagittal cross section of the pelvis showing the female anatomy including the ovary and fallopian tube.

