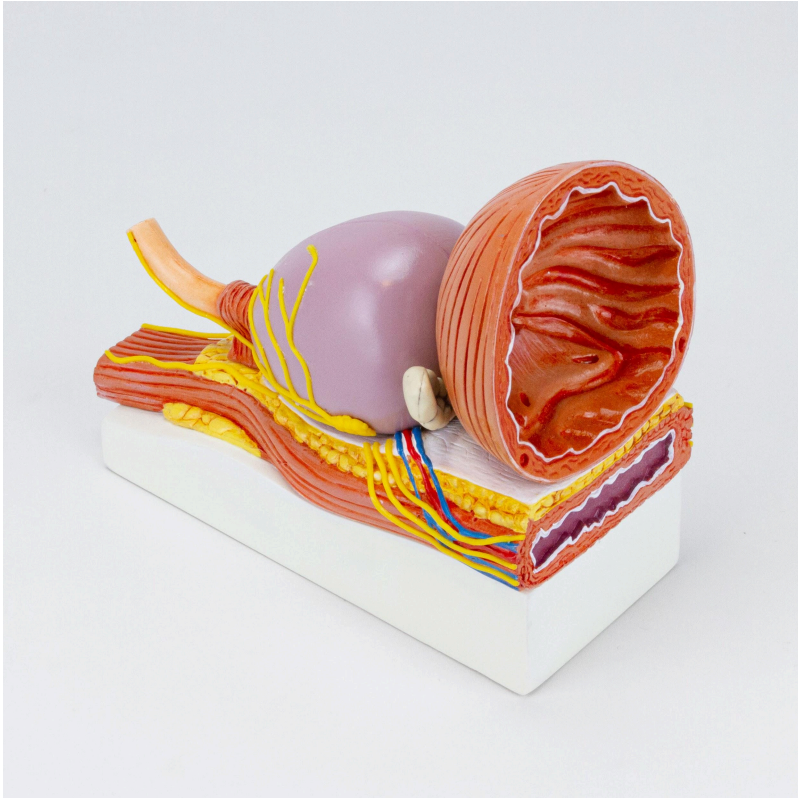
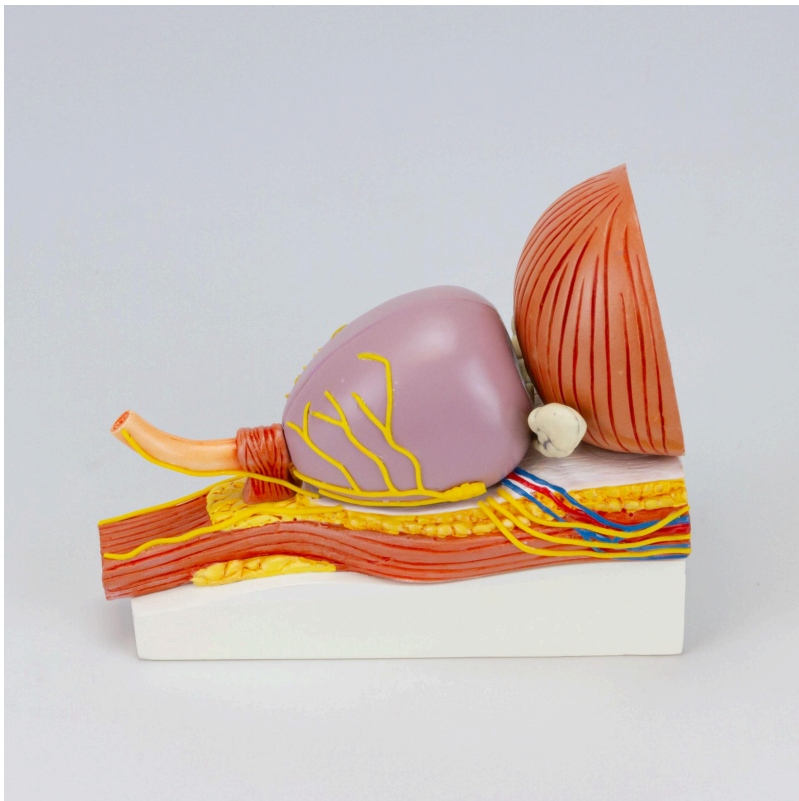


**MG34924 | PROSTATE WITH PATHOLOGY**







Male urinary system anatomical model, showcasing a healthy bladder and a prostate gland sectioned in the frontal plane for detailed demonstration of its internal anatomy and common pathologies such as BPH, urethral stricture, tumor, and carcinoma. The model is mounted on a polymer base and hand-painted, with numbering for easy identification of structures.

**Applications:**

Ideal for the study of male anatomy in schools and universities; indicated for training and demonstration in medical and scientific contexts.

**Technical Characteristics:**

- \* High-quality educational equipment;
- \* Numbered and hand-painted in educational colors;
- \* Precise details to facilitate learning;
- \* High-fidelity natural molding;
- \* Manufactured from resistant synthetic material;
- \* Anatomical replica;
- \* Includes an information card with related structures;
- \* Resin approved in toxicological tests.



### **3D Technology and Augmented Reality:**

Our anatomical models offer a visual complement through information cards that activate 3D models viewable in augmented reality (AR). This interactive platform assists learning, allowing comparative analysis of anatomical structures and offering resources for continuing education in anatomy, physiology, and pathophysiology.

### **Technical Specifications:**

- \* Scale: Life size
- \* Material: Resin
- \* Painting: Manual

### **Main Structures:**

**Bladder:** A hollow muscular organ located in the pelvis, responsible for storing urine before urination. Its wall is composed of three layers: mucosa, muscular, and serosa. The bladder expands as it fills with urine and contracts during urination to empty its contents through the urethra.

**Urethra:** Tube that transports urine from the bladder out of the body. In men, the urethra also transports semen. It presents variations in its path and length.

**External urethral sphincter:** Voluntary muscle that surrounds the urethra and allows conscious control of urination. Its contraction prevents the involuntary leakage of urine.

**Seminal gland:** Accessory glands of the male reproductive system, located posterior to the bladder. They produce an alkaline fluid rich in fructose, which makes up most of the volume of semen, providing nutrients to the sperm.

### **About the Anatomical Models:**

Developed with resin replication technology, our models are an alternative for teaching and research. They present the main morphological characteristics with a good cost-benefit ratio, adequate resistance, manual painting, and numbering for precise identification of structures.

Acquire our anatomical model and provide an enhanced learning experience at your institution. Contact us to request information or a demonstration.

### **List of all visible structures:**

- bladder
- urethra
- external urethral sphincter
- seminal gland