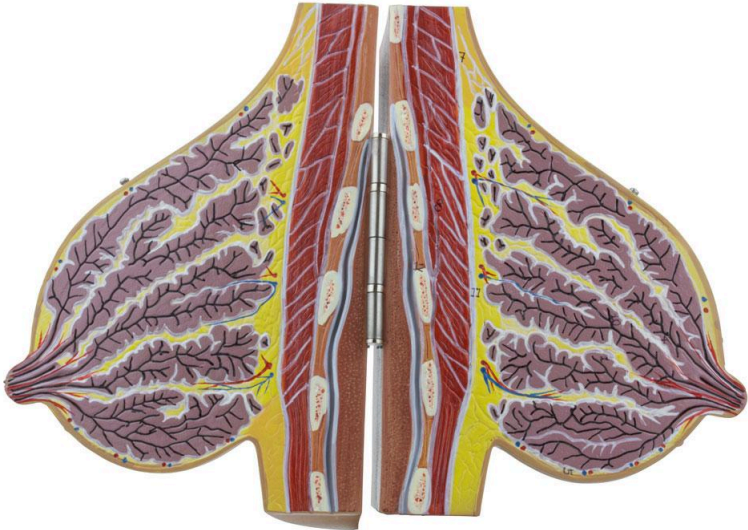




MG29239 | FEMALE LACTATING BREAST



Nasco
HEALTHCARE





This life-size anatomical model represents the sectional structure of the breast of lactating women, divided into two parts that open to reveal the numbered internal structures. It is a valuable tool for the detailed study of mammary anatomy during lactation.

Applications:

Ideal for the study of lactating breast anatomy, for teaching, training, and demonstrations in educational institutions and medical offices.

Technical Differentiators:

- * Detailed representation of the sectional structure of the lactating breast.
- * Numbered internal structures for easy identification.
- * Manufactured with high-quality durable plastic material.
- * Mounted on a durable polymer base with a metal hinge.

3D Technology and Augmented Reality:

Our anatomical models offer an innovative visual complement through information cards that activate 3D models viewable in augmented reality (A.R.). This exclusive interactive platform stimulates learning, allowing comparative analysis of anatomical structures and offering opportunities for continuing education in anatomy, physiology, and pathophysiology.



Technical Specifications:

- * Scale: Life-size
- * Material: High-quality durable plastic
- * Base: Durable polymer with metal hinge
- * Division: Two sectioned parts

Main Structures:

Areola: The areola is the pigmented circular area surrounding the nipple. It contains sebaceous glands that secrete a protective oil, helping to maintain the softness and flexibility of the nipple skin. During pregnancy and breastfeeding, the areola generally increases in size and darkens.

Glandular tissue: The glandular tissue of the breast is composed of lobes and ducts that produce and transport milk. The lobes are the milk-producing units, while the ducts are the channels that transport milk from the lobes to the nipple. This tissue is highly responsive to hormones, especially during pregnancy and breastfeeding.

Suspensory ligaments of the breast: Also known as Cooper's ligaments, they are fibrous bands of connective tissue that extend from the dermis of the skin to the deep fascia that surrounds the pectoral muscles. They provide structural support for the breast, helping to maintain its shape and position. Over time, these ligaments can lose elasticity, contributing to breast sagging.

Nipple: The nipple is the central projection of the areola, containing the openings of the lactiferous ducts, through which milk is released during breastfeeding. It is richly innervated, making it sensitive to touch and stimulation, which can trigger the milk ejection reflex.

Lactiferous sinus: The lactiferous sinuses are dilations of the lactiferous ducts located just below the areola. They serve as temporary reservoirs for milk before being released through the nipple during breastfeeding.

Adipose tissue: Adipose tissue, or fat, is an important component of the breast, filling the spaces between the glandular lobes and ducts. The amount of adipose tissue in the breast varies from woman to woman and influences the size and shape of the breast. In addition to providing volume, adipose tissue also plays a role in thermal insulation and protection of the internal structures of the breast.

Lactiferous duct: The lactiferous ducts are the channels that transport milk produced in the mammary gland lobes to the nipple. Each lactiferous duct drains a specific lobe and opens onto the surface of the nipple through a small orifice.

Mammary gland lobe: Lobes are the functional units of the mammary gland, responsible for



milk production. Each lobe is composed of numerous alveoli, which are small sacs lined with milk-secreting cells. During pregnancy and breastfeeding, the lobes increase in size and activity.

Deep fascia: The deep fascia is a layer of dense connective tissue that surrounds and separates the pectoral muscles from the breast. It provides structural support for the breast and helps maintain its shape.

Rib: Ribs are long, curved bones that form the rib cage, protecting internal organs such as the lungs and heart. They articulate with the vertebral column at the back and with the sternum at the front, forming a flexible and resistant structure.

Pectoralis major muscle: The pectoralis major muscle is a large, superficial muscle located in the anterior region of the chest. It originates from the sternum, ribs, and clavicle, and inserts into the humerus (arm bone). Its main functions include adduction, internal rotation, and flexion of the arm at the shoulder joint. In addition, it assists in deep breathing.

Customizable Skin Tones:

This anatomical model offers the option of choosing between three skin tones to better represent human diversity and meet different educational and clinical needs. It is possible to choose between light skin, intermediate tone, and dark skin, providing greater realism and inclusion during training and demonstrations.

About Anatomical Models:

They are developed with resin replication technology, addressing the shortage of natural anatomical parts for teaching and research. They present all the essential morphological characteristics with excellent cost-benefit, resistance, manual painting, and numbering for precise identification of structures.

List of all visible structures:

- areola
- glandular tissue
- suspensory ligaments of the breast
- nipple
- lactiferous sinus
- adipose tissue
- lactiferous duct
- mammary gland lobule
- deep fascia
- rib
- pectoralis major muscle
- adipose tissue