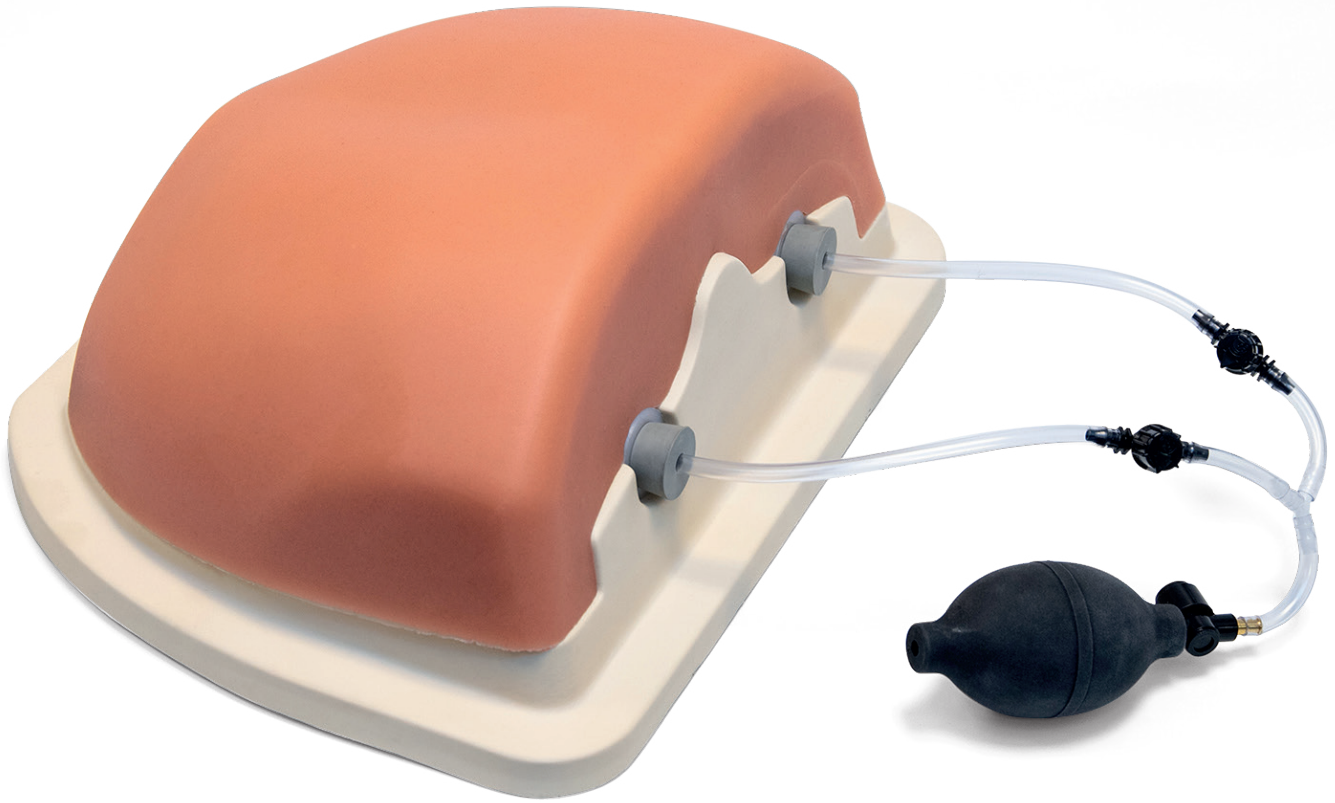


# IMAGE GUIDED THORACIC SPINAL INJECTION TRAINER P66 | 1021899



The Image Guided Trainer for the Thoracic Spine (P66) is an economic alternative for imaging techniques courses using cadavers. It offers instructors a reliable, standardized patient simulation, which is easily ready to use:

- Life-like radiopacity for realistic x-ray images
- Realistic injection haptics (Spinous processes T3-T8)
- Anatomically accurate bone structure (Ribs 3-8)
- Visually identifiable landmarks

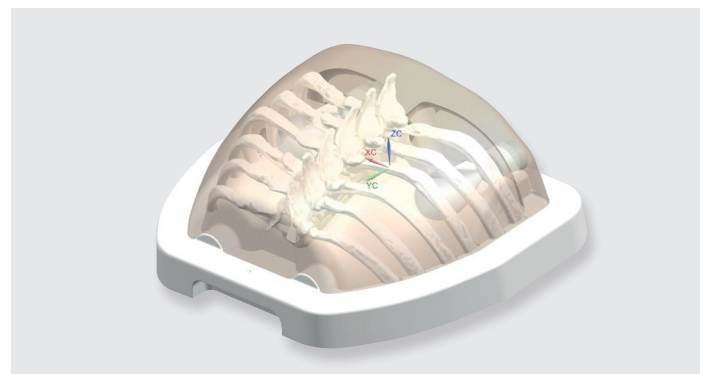
The trainer is ideal for use during imaging courses and can be used repeatedly for injection training thanks to his self-sealing material. The following interventional techniques can be trained on the simulator:

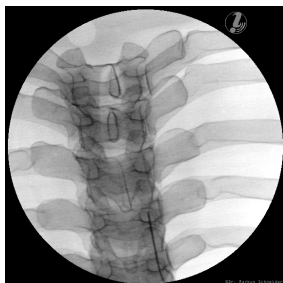
- Landmark guided techniques
- Interlaminar Epidural Steroid Injection
- Thoracic Transforaminal Injection
- Thoracic Zygapophysial Joint
- Nerve (Medial Branch) Injection
- Intraarticular Injection
- Thoracic Zygapophysial Joint
- Intercostal Nerve Block (ICNB)



**Note:**

The Image Guided Thoracic Spinal Injection Trainer P66 is not a palpation trainer. It has been designed only for imaging techniques course purposes. Any repetitive or strong palpation of the spinous processes structure could cause a perforation of the soft skin material.





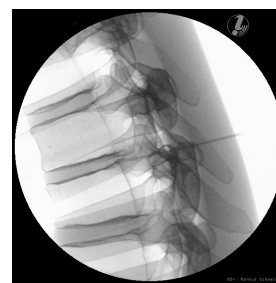
Facette intraarticular



Intercostal block



Interlaminar

Medial Branch Block  
Facette

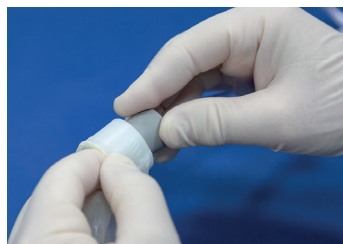
Transforaminal

Images taken with an X-ray machine combined with an image converter. References: Instrumentarium Imaging ZIEHM VISTA.

Max KVP: 110kV, Total filtration 4.0 mm AL, Focal spot: 0.5/ 1.5

© Dr. Markus Schneider, Bamberg

## > CHANGE THE LUNGS



To order lungs please use number: 1019307



### Important:

To prolong the life of the trainer please lubricate the needles used with the provided lubricant before any injection into the soft skin material. Do not inject any liquid or contrast substance into the trainer.

## > CLEANING INSTRUCTIONS

Clean carefully with a damp cloth. Let the trainer dry by air, then sprinkle on the talcum powder provided after each use. Carefully rub it over the entire surface and store the model with the protection cover in the storage box. Always store the skin of the trainer on the bone structure.

## > OPERATING CONDITIONS

In order to ensure shape stability of the soft skin material, the operating temperature and storage temperature should not be exceeded.

Operating temperature 0°C to +30°C (32°F - 86°F)

Storage temperature -10°C to +30°C (14°F - 86°F)

The simulator contains no substances indicated in the REACH regulation EC no. 1907/2006

## > TECHNICAL DATA

Dimensions: Block (255 x 327 x 140 mm),  
storage box (300 x 400 x 220 mm)

Weight: Block (approx. 3500 g),  
storage box with contents (approx. 5392 g)

## > SHIPPING AND TRANSPORT CONDITIONS

The skin parts must be stored on the provided pedestal base. Always use the protective cover when trainer is in the box or otherwise stored.