



*...going one step further*



**A89**

# Sectional knee joint model, 3-part

English

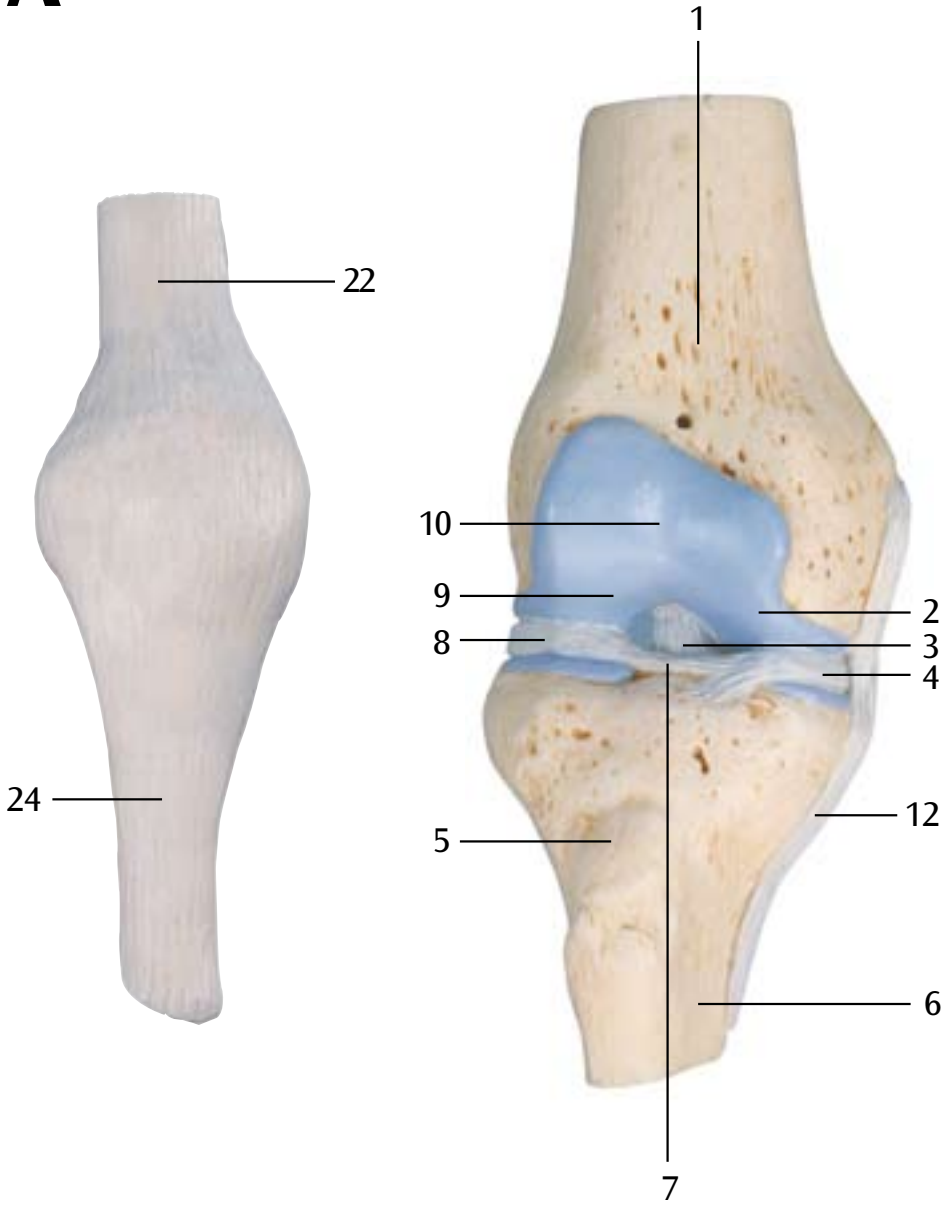
This model can be used to demonstrate various disorders of the human knee joint (articulatio genus) and their respective therapies in a graphic way. The model shows a natural-sized, healthy right knee joint in upright position, including parts of the femur, tibia and fibula as well as the ligament system and the patella with part of the femoral tendon. The patella and attached tendon and the front half of the model (which is frontally sectioned) can be detached to reveal the internal structures.

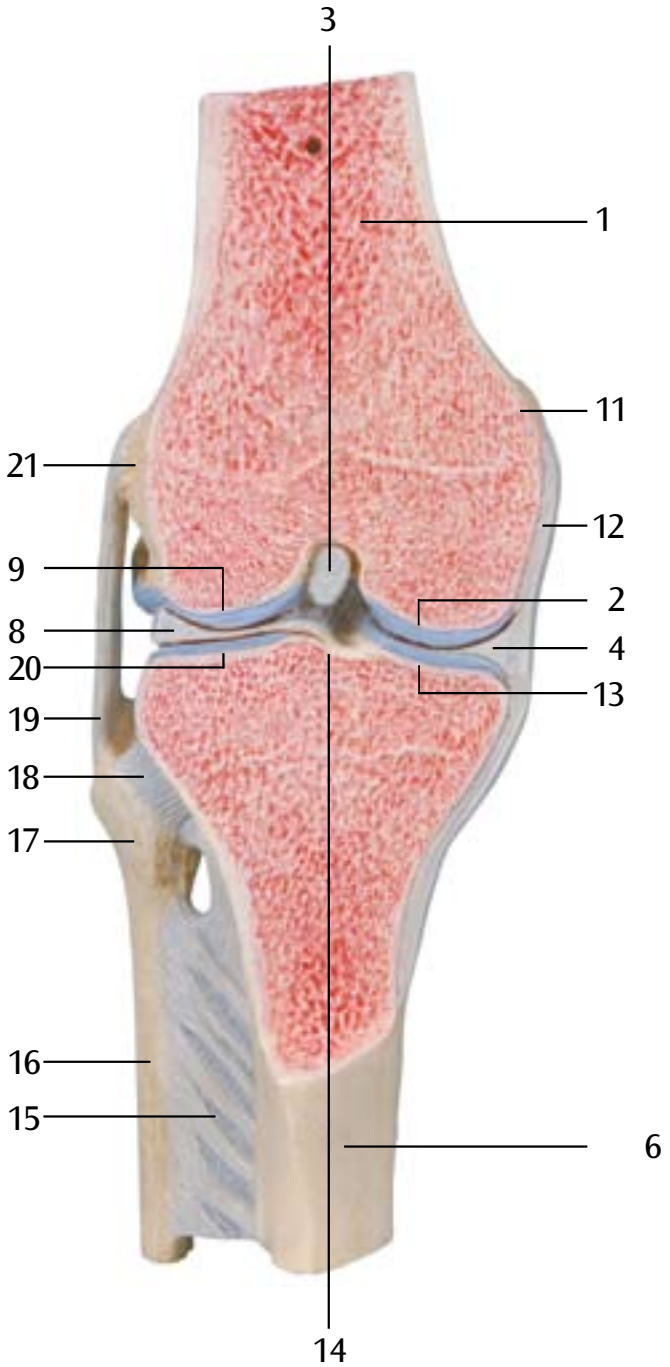
- A** Anterior view of the right knee joint (articulatio genus), frontal section through the middle of the joint
- B** Posterior view of the right knee joint (articulatio genus)

- 1 Femur (thigh bone)
- 2 Medial condyle of femur
- 3 Anterior cruciate ligament
- 4 Medial meniscus of knee
- 5 Tuberosity of tibia
- 6 Tibia (shin bone)
- 7 Transverse ligament of knee
- 8 Lateral meniscus of knee
- 9 Lateral condyle of femur
- 10 Patellar surface of femur
- 11 Medial epicondyle of femur
- 12 Tibial collateral ligament
- 13 Medial condyle of tibia
- 14 Intercondylar eminence
- 15 Crural interosseous membrane
- 16 Fibula
- 17 Head of fibula
- 18 Anterior ligament of head of fibula
- 19 Fibular collateral ligament
- 20 Lateral condyle of tibia
- 21 Lateral epicondyle of femur
- 22 Tendon of quadriceps femoris muscle
- 23 Patella
- 24 Patellar ligament
- 25 Posterior ligament of head of fibula
- 26 Posterior cruciate ligament
- 27 Posterior meniscomfemoral ligament
- 28 Articular surface of patella

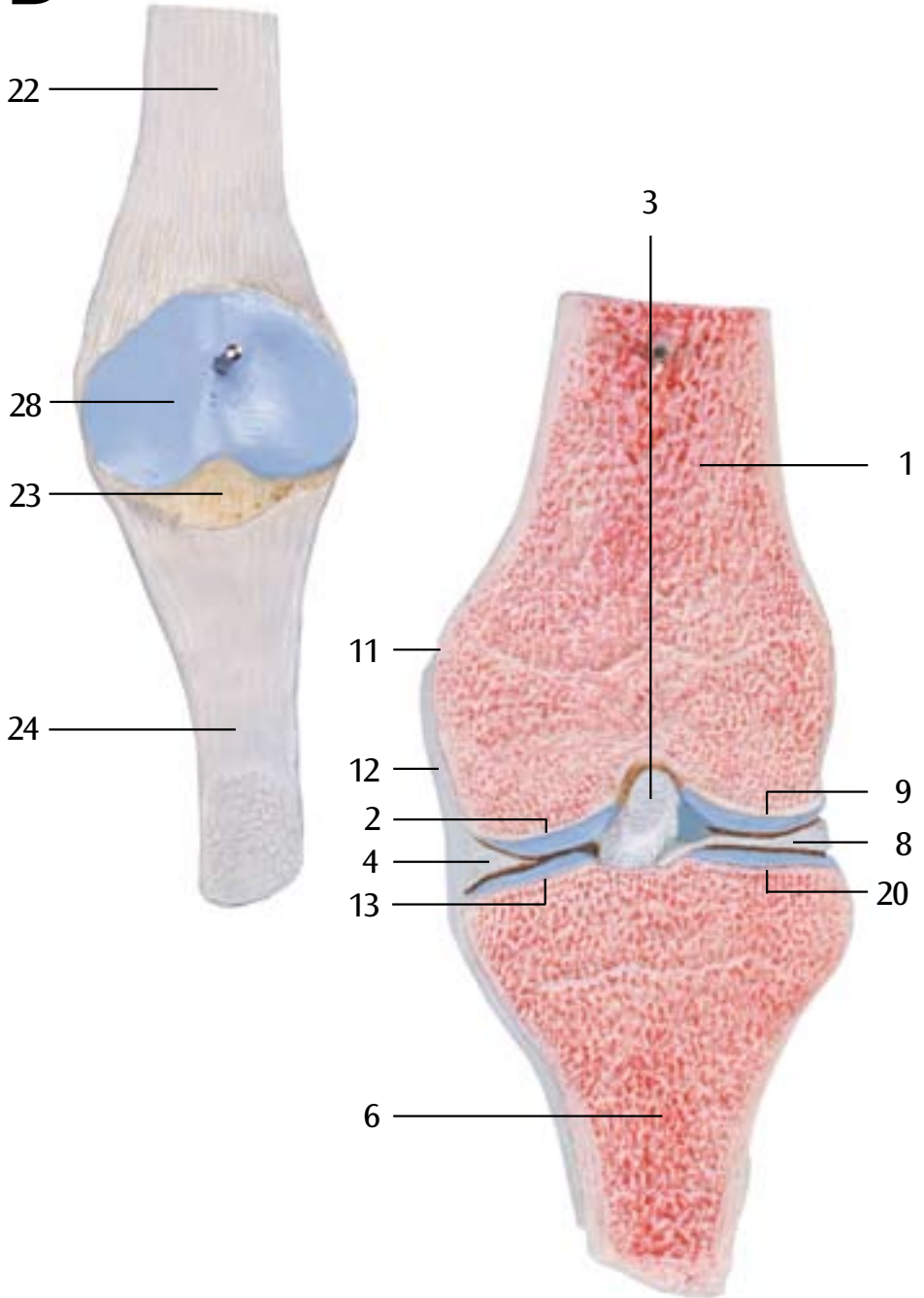


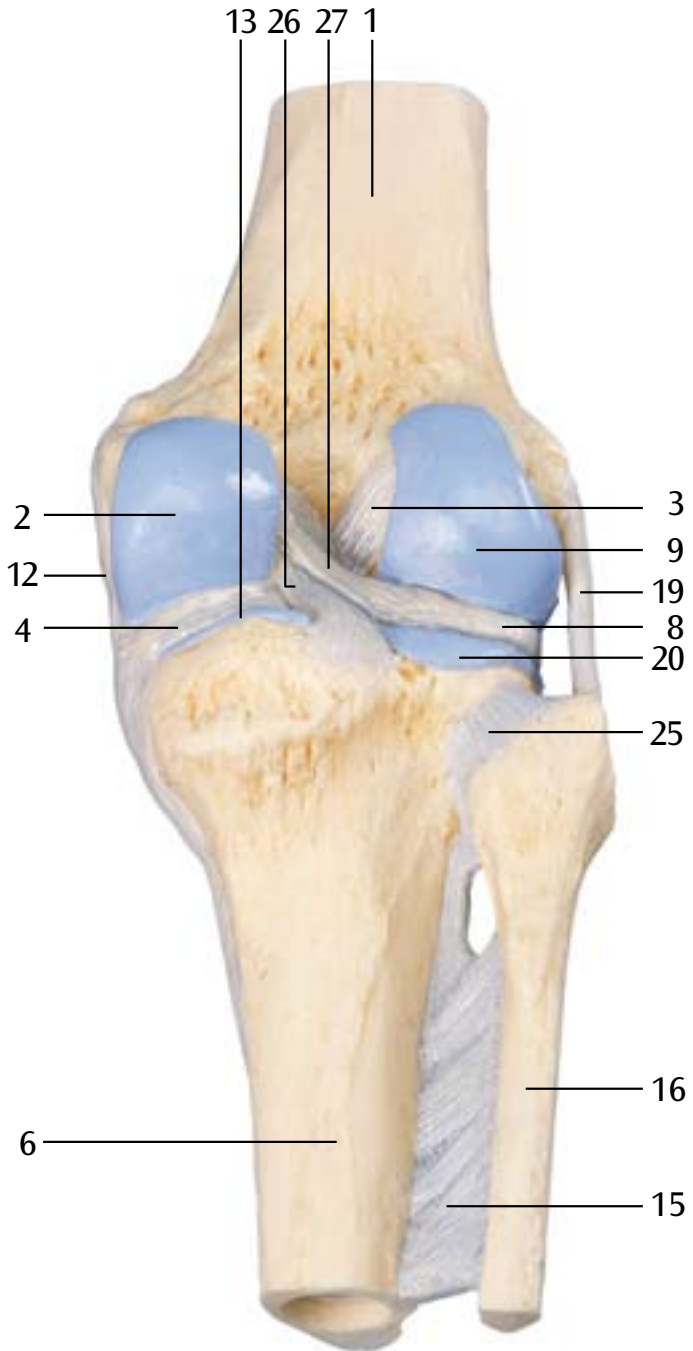
# A





# B







**3B SCIENTIFIC® PRODUCTS**