

MO-TE GENERATOR SHIELDED RINSE CAN

PRODUCT INFORMATION

COPYRIGHT ©2025. ALL RIGHTS RESERVED



PRODUCT INFORMATION

MO-TE GENERATOR SHIELDED RINSE CAN



The Rinse Lead Can is designed for safe shielding during the rinsing process of Mo-Te generator drugs, ensuring radiation protection and user safety. Manufactured with a solid lead core and 304 stainless steel exterior, it combines reliable shielding with a durable, easy-to-clean surface. The stainless steel finish also includes an anti-fingerprint coating for a clean and professional appearance.

This shielding container is designed to accommodate 10 ml Xilin bottles, providing secure placement during rinsing. A spiral open needle inlet allows for easy and efficient handling, while maintaining safety throughout the process.

Key Features:

- Material: Lead core with 304 stainless steel exterior
- Finish: Anti-fingerprint surface for clean handling
- Shielding: 10 mm Pb equivalent radiation protection
- Capacity: Suitable for 10 ml Xilin bottles
- Design: Spiral open needle inlet for efficient use
- Dimensions: 50 mm × 110 mm (1.97 in × 4.33 in)

SPECIFICATION

BRAND: Phillips Safety

MATERIAL: Lead Core, 304 Stainless-Steel

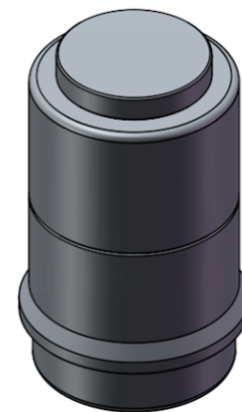
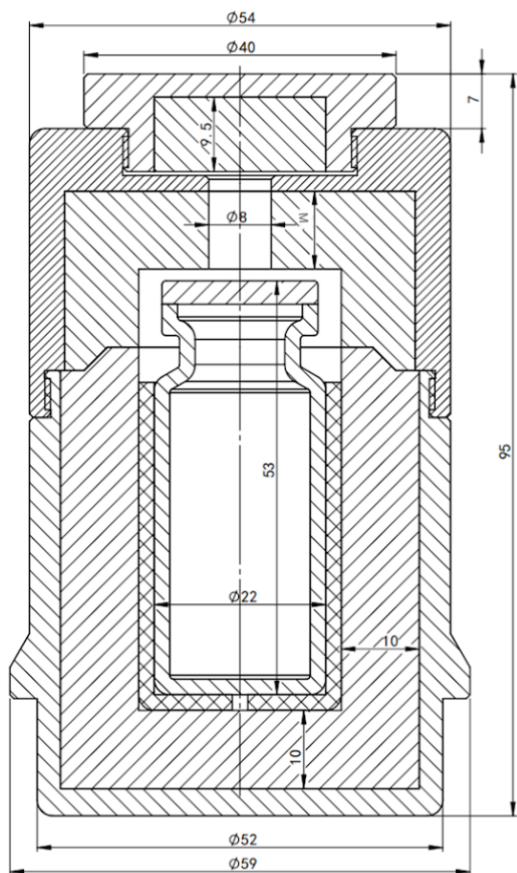
CAPACITY: 10ml Xilin Bottles

DIMENSIONS: 50mm × 110mm (1.97" × 4.33")

PROTECTION LEVEL: 10mm Pb

FEATURES: Anti-Fingerprint Finish, Spiral Open Needle Inlet, Compact

PRODUCT INFORMATION
MO-TE GENERATOR SHIELDED RINSE CAN



5	Component	1	Material (unspecified)	0.018	0.018	
4	Washing lead bottle sleeve	1	Nylon 66	0.007	0.007	
3	Washing lead tank cover	1	304	0.112	0.112	
2	Washing lead can lids	1	304	0.571	0.571	
1	Lead tank body washing	1	304	1.081	1.081	
	name		Material	Total	unit weight	Remark
	Material	weight	Proportion			
	components	1.789	2:1	Leaching lead tank		
	mapping	Zhen Yuchao	2024/9/25	Shandong Hongyinyu Medical Technology Co., Ltd.		