

UPLOAD DATA IN REAL TIME VIA WIFI



**LogTag**®

**LTI-WM-WIFI**  
Real-Time Wall Mounted  
WiFi Interface Cradle



The new LogTag® LTI-WM-WiFi is a high-speed interface device that connects TRES/TREL/TRED data loggers to your WiFi network for real-time data upload to a Cloud-based online environmental management system platform, LogTag Online.

The LogTag® LTI-WM-WiFi uploads data in real time without access to a computer and installed software. The data is immediately available to authorized stakeholders in LogTag Online.

\*TRED30-16R and glycol buffer in the image sold separately

# Features



Real-time data automatically uploaded via WiFi to the LogTag Online cloud.



Easily set up to work with your WiFi network.



Connects to LogTag Online, a cloud server solution for viewing, analyzing and storing data.



If the WiFi network is temporarily unavailable, downloaded data is stored in the LTI-WM- WiFi's buffer memory.



Downloaded data is fully encrypted and automatically uploaded to a secure LogTag cloud server.



Inbuilt LED indicators show data download and network access status.

# Applications



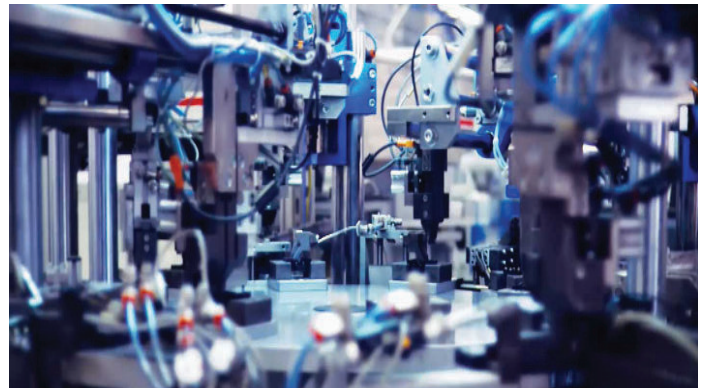
*Medical & Healthcare*



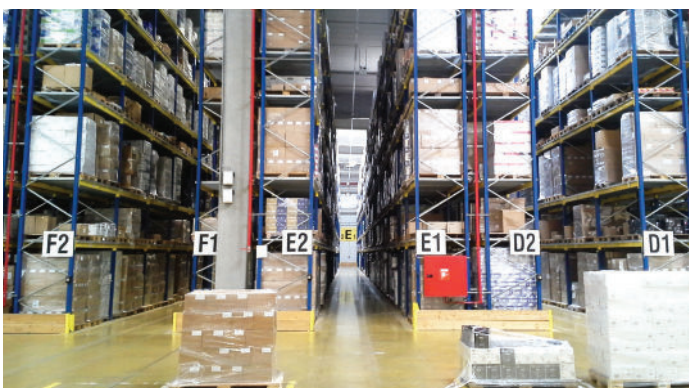
*Clinics / Laboratories*



*Vaccines*



*Industrial*



*Warehouse*



*Indoor Spaces*

# Specifications

<b>Product Model</b>	LTI-WM-WiFi
<b>Operating Temperature Range</b>	-25°C to +40°C
<b>Storage Temperature Range</b>	-40°C to +70°C
<b>USB Standard</b>	2.0
<b>Logger buffer</b>	Up to 45 logger downloads can be buffered
<b>WiFi</b>	2.4GHz 802.11 b/g/n High sensitivity internal antenna
<b>Network Security</b>	WPA/WPA2-PSK
<b>Environmental</b>	IP50 (Rated for inside use only)
<b>Power Source</b>	5V (Computer or USB wall charger)
<b>Size</b>	(W)70mm (H)114mm (D)38mm
<b>Weight</b>	100g
<b>Case Material</b>	ABS
<b>Connectors</b>	USB Micro
<b>Certifications</b>	FCC, CE & RoHS Compliant
<b>Range (Clear Line of Sight)</b>	40m
<b>Accessories</b>	2.0m USB cable



# Connection Software

Real-time data automatically uploaded via WiFi to the LogTag Online cloud.

