



...going one step further



D17

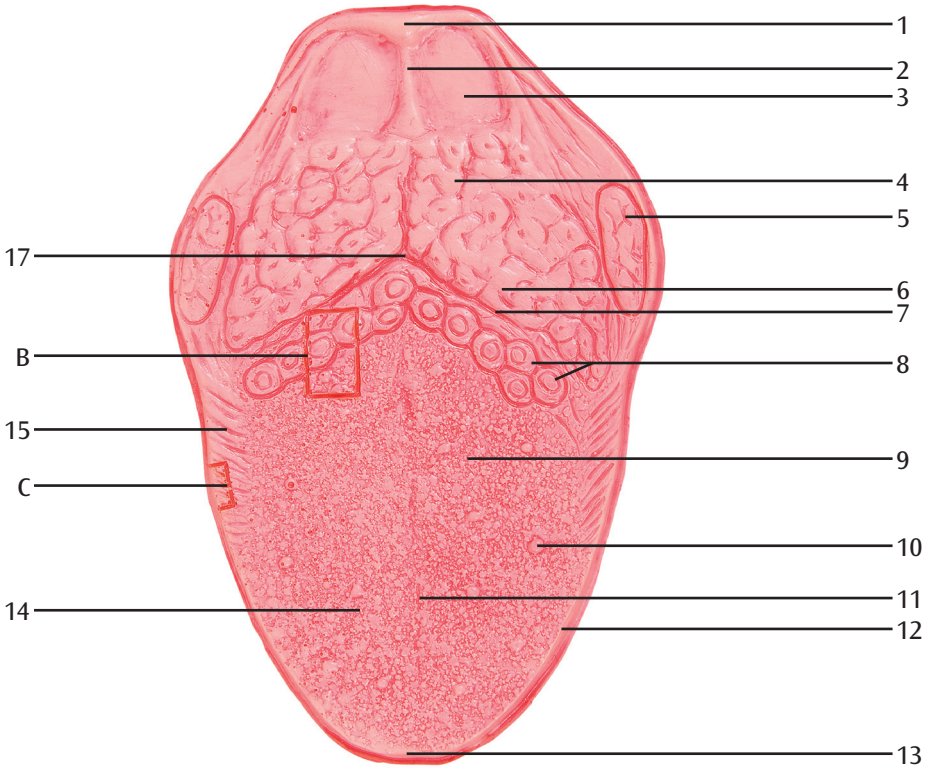
3B MICROanatomy™ Tongue

English

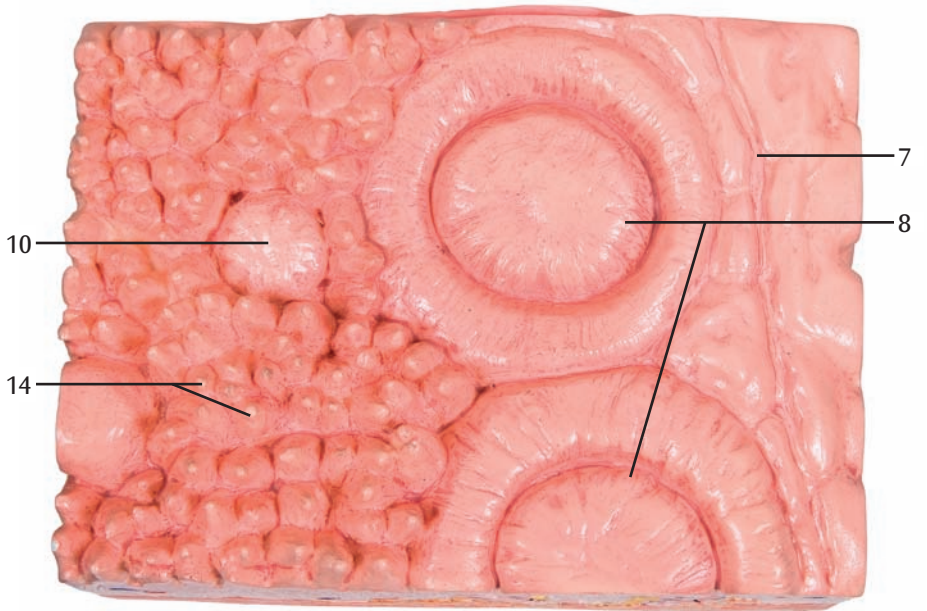
For orientation the reverse side of the model shows a complete tongue in actual size. The different tongue papillae can be recognized under 10- to 20 times magnification in various cutout views. Section B comprises the representation of caliciform papillae (Papillae vallatae), the fungiform papillae (Papillae fungiformes) and the filiform papillae (Papillae filiformis). Section C represents a magnified cutout of foliate papillae (Papillae foliatae). Section D represents a 450 times magnification of a taste bud. In addition, the sensory regions (taste fibers) and the sensory innervation (touch, temperature and pain sensitivity) of the tongue are graphically depicted on a type label.

- | | |
|---|--------------------------------|
| A Back of the tongue, actual size | 34 Epithelial cell |
| B Cutout magnification (10 to 20 times): caliciform papillae, filiform papillae and fungiform papillae | 35 Type I cell |
| C Cutout magnification (10 to 20 times) foliate papillae | 36 Type II cell |
| D Cutout magnification (ca. 450 times): taste buds | 37 Type III cell |
| E Sensory innervation | 38 Type IV cell (basal cell) |
| F Sensory (taste) innervation | 39 Type V cell (marginal cell) |
-
- | | |
|---|--|
| 1 Epiglottis | 40 Basal lamina |
| 2 Median glossoepiglottic fold | 41 Basal cell |
| 3 Epiglottic vallecula | 42 Vagus nerve [X] |
| 4 Lingual tonsil | 43 Glossopharyngeus nerve [XI] |
| 5 Palatine tonsil | 44 Lingual nerve (trigeminal nerve [CN V], V3) |
| 6 Root of tongue | 45 Facial nerve [CN VI] (cord of tympanum) |
| 7 Terminal sulcus of tongue | |
| 8 Vallate papillae | |
| 9 Body of tongue | |
| 10 Fungiform papilla | |
| 11 Median sulcus | |
| 12 Margin of tongue | |
| 13 Apex of tongue | |
| 14 Filiform papillae | |
| 15 Foliate papillae | |
| 16 Taste bud | |
| 17 Glandular foramen [cecal foramen] of tongue | |
| 18 Epithelium (nonkeratinized stratified squamous epithelium) | |
| 19 Secondary papillae | |
| 20 Vallum | |
| 21 Lamina propria | |
| 22 Nerve | |
| 23 Gustatory glands, Ebner's glands | |
| 24 Lingual aponeurosis | |
| 25 Muscular layer | |
| 26 Blood vessels | |
| 27 Lingual follicle | |
| 28 Crypt | |
| 29 Lymphatic tissue | |
| 30 Lymph follicles | |
| 31 Mucous glands | |
| 32 Taste pore | |
| 33 Microvilli | |

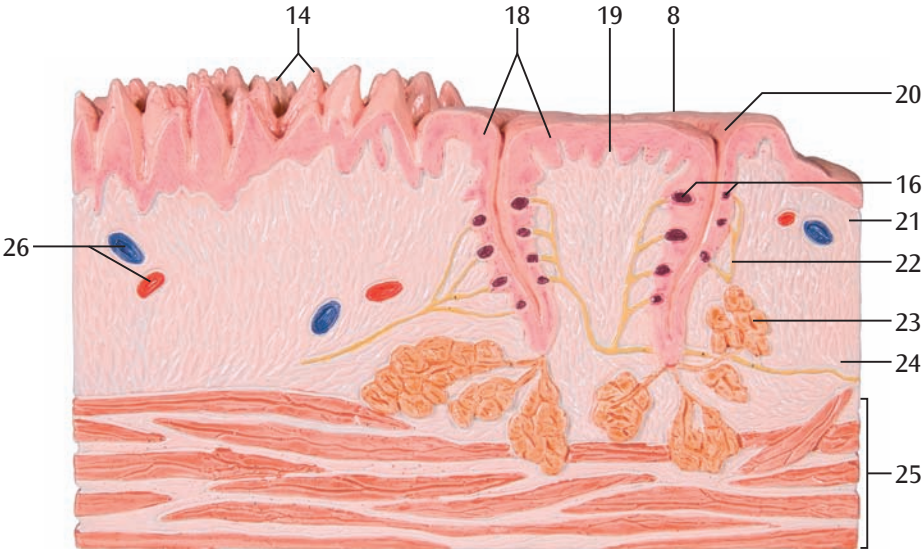
A

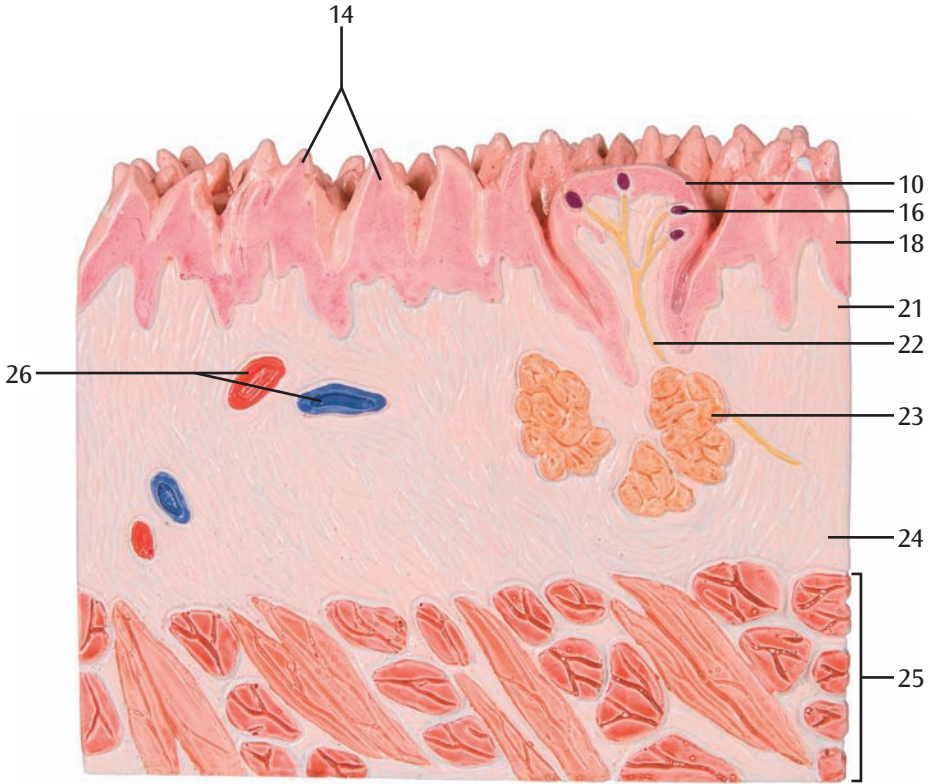


B

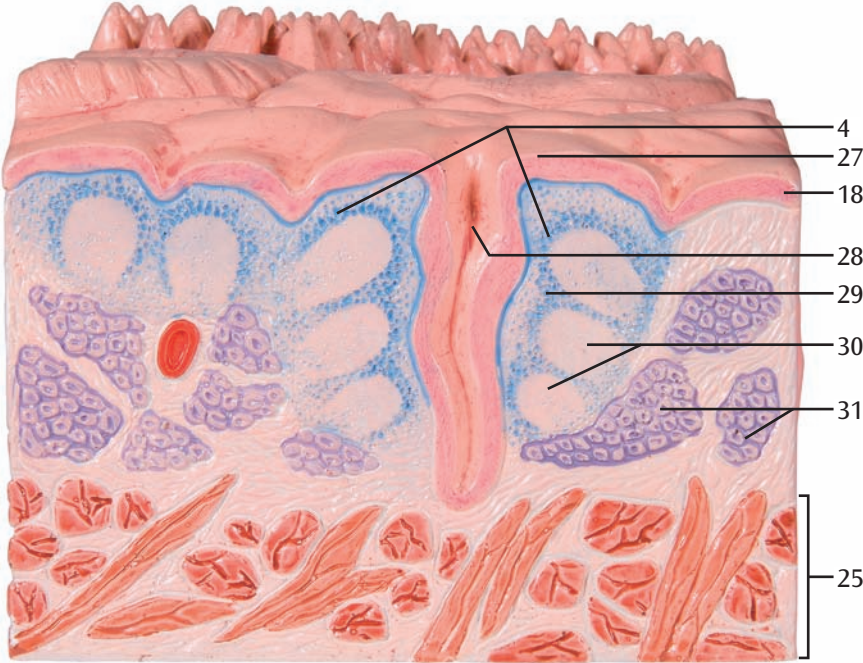


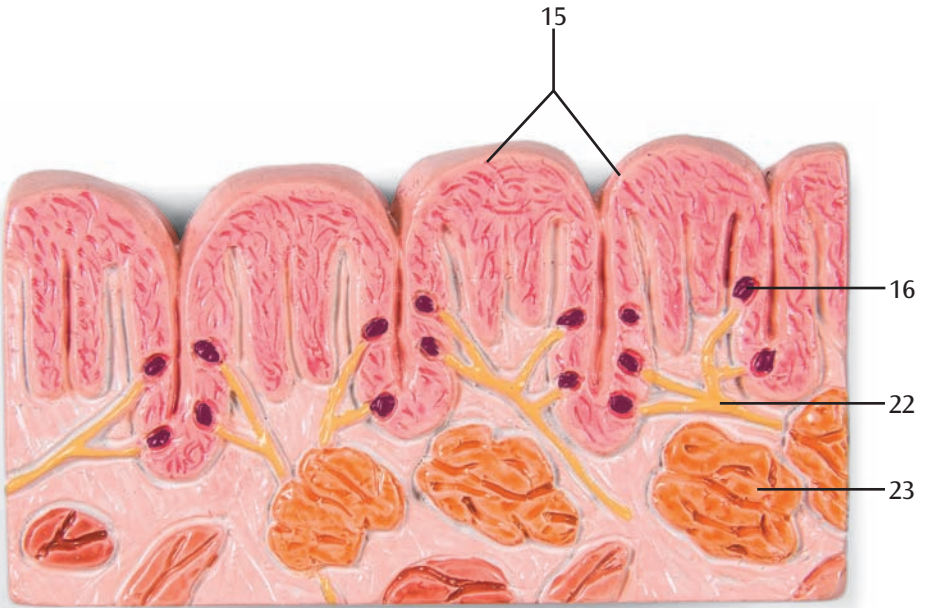
B-1



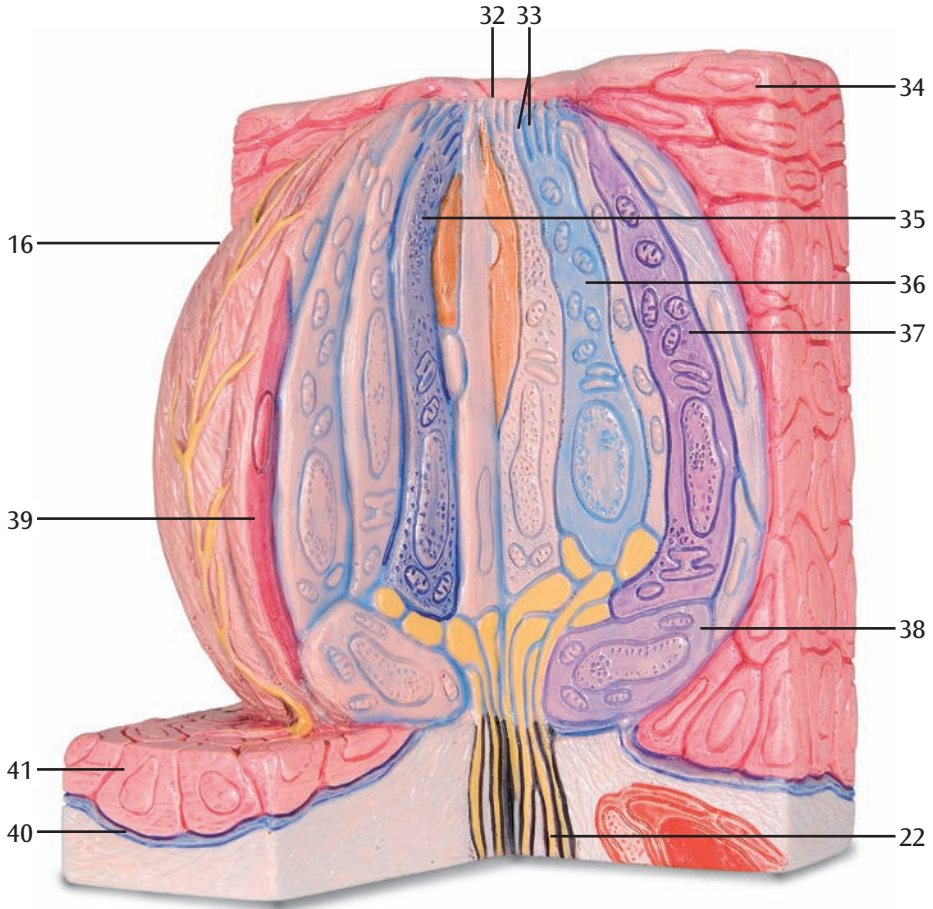


B-3

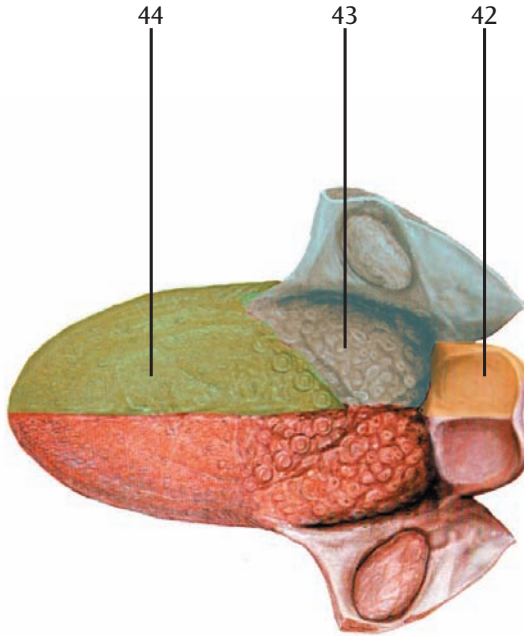




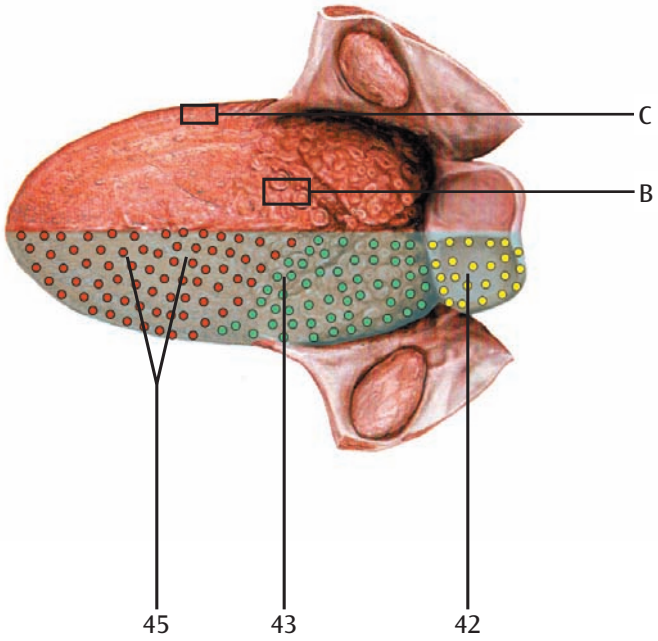
D



E



F



Also available from 3B Scientific®:

B60 3B MICROanatomy™ Muscle Fiber

Ebenfalls bei 3B Scientific® erhältlich:

B60 3B MICROanatomy™ Muskelfaser

Tambien disponible en 3B Scientific®:

B60 3B MICROanatomy™ Fibra muscular

Egalement disponible auprès de 3B Scientific® :

B60 Fibre musculaire 3B MICROanatomy™

Também disponível na 3B Scientific®:

B60 3B MICROanatomy™ Fibras musculares

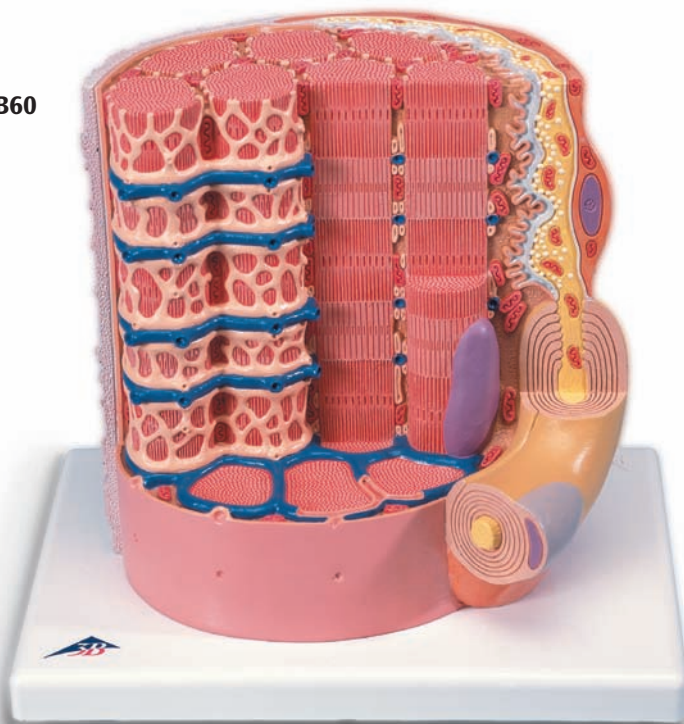
Disponibile anche presso 3B Scientific®:

B60 3B MICROanatomy™ Fibra muscolare

3B Scientific®では他にも花のモデルをご用意しております

B60 3B MICROanatomy™筋繊維モデル

B60



Also available from 3B Scientific®:

K23 3B MICROanatomy™ Digestive System

Ebenfalls bei 3B Scientific® erhältlich:

K23 3B MICROanatomy™ Verdauungstrakt

Tambien disponible en 3B Scientific®:

K23 3B MICROanatomy™ Tracto digestivo

Egalement disponible auprès de 3B Scientific® :

K23 Appareil digestif 3B MICROanatomy™

Também disponível na 3B Scientific®:

K23 3B MICROanatomy™ Tubo digestivo

Disponibile anche presso 3B Scientific®:

K23 3B MICROanatomy™ Tubo digerente

3B Scientific®では他にも花のモデルをご用意しております

K23 3B MICROanatomy™ 消化器官の組織モデル

K23





3B SCIENTIFIC[®] PRODUCTS