

Newman Medical

Employee Owned & Operated

Thank you for your purchase of Newman Medical's DICOM option. The setup of this program may involve PACS administrators and IT help of a certain level. To make the process go more smoothly it is necessary to have information gathered for installation. Below is a screen shot of the basic setup and information needed, please contact your PACS administrator or IT professional to gather this information.

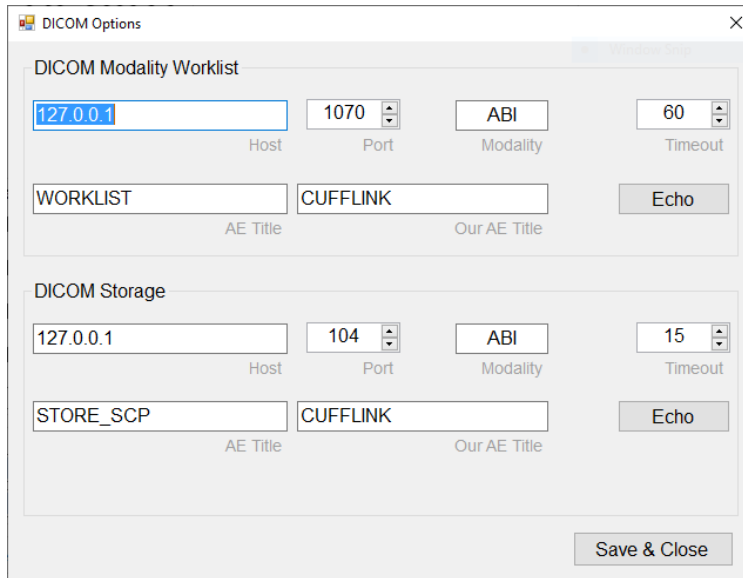


Figure 1 - Basic DICOM setup window

DICOM Modality Worklist

Host _____

Port _____

Modality _____

Timeout _____

AE Title _____

Our AE Title _____

DICOM Storage

Host _____

Port _____

Modality _____

Timeout _____

AE Title _____

Our AE Title _____

DICOM Contact name _____

DICOM Contact phone _____

DICOM Contact email _____

Newman Medical

Employee Owned & Operated

Below are instructions for entering DICOM information, running and testing the DICOM connection.

Setup Instructions

1. Enter the above into the DICOM Setup menu (under EDIT menu). A registration key is necessary to enter setup.
 - a. If you purchased DICOM as part of your purchase order, this is normally entered at the factory for your convenience.
 - b. If a window appears requesting a registration key, please contact Newman Medical support.
2. After entering DICOM information, press ECHO in setup to make sure simpleABI system and PACS Server are communicating.
3. Exit DICOM setup.
4. Open any new report (under FILE menu) to get the DICOM menu commands active. A report must be open in order to access DICOM menu commands under FILE menu.
5. From the file menu select Query worklist.
 - a. The first time simpleABI DICOM runs it prompts to find the QueryPlugin.exe. It is located at one of the following locations, depending on simpleABI version purchased.
 - i. (600CL/500CL/450CL/400CL) C:\Program Files (x86)\Newman Medical\Simple ABI CL Reporting\NewmanDICOM\QueryPlugin
 - ii. (300/250) C:\Program Files (x86)\Newman Medical\Simple ABI Reporting\NewmanDICOM\QueryPlugin
 - iii. (ABI-Q) C:\Program Files (x86)\Newman Medical\ABI-Q\NewmanDICOM\QueryPlugin
6. simpleABI DICOM subsequently pulling up the worklist signal correct operation.
7. You can push DICOM image or Structured Report to the PACS server by selecting 'Store...' under the file menu.