



ULTRA LOW TEMPERATURE | HIGHLY RELIABLE ULT FREEZER WITH NATURAL REFRIGERANT

The freezer comes with the extremely powerful independent **TRUE DUAL™** technology that keeps the samples protected at -70°C if an unexpected failure occurred keeping you worry-free and the samples secured and safely guarded.



The first-class V700 controller is equipped with all necessary alarms and features on top of everything, we developed ECO mode to reduce energy consumption while maintaining optimum uniformity for the stored materials.



NATURAL REFRIGERANT

▶ RELIABLE FREEZING

This model features a swift pull-down time of about 3 hours¹, showcasing a strong cooling system with robust insulation from a mix of polyurethane and vacuum-insulated panels.

Even with frequent door openings, it quickly reestablishes a uniform temperature, maintaining a reliable environment unaffected by external temperatures, thanks to its excellent temperature recovery capabilities.

¹See below graph under "Improved recovery time". Ambient temperature 32°C Freezer with no-load.

▶ ENVIRONMENTALLY FRIENDLY

Our units are completely free of HFCs, HCFCs, CFCs, and PFCs. Additionally, the ODP value is zero, ensuring effective sample protection while fully safeguarding the environment.

These eco-friendly refrigerants also reduce energy consumption, enhancing the cooling system's cost-effectiveness and maintaining high performance through strong thermodynamic properties.

▶ ULTIMATE SAMPLE PROTECTION

This model incorporates advanced technologies and the very best components for exceptional performance.

Our **TRUE DUAL™** technology prevents sample loss by keeping the freezer operational in the unlikely event of one compressor failing, maintaining -70°C. This ensures your research or samples are protected around the clock, avoiding the risks associated with inferior laboratory equipment.

▶ MULTI-VOLTAGE

Our multi-voltage freezers operate between 100 to 240 volts, seamlessly integrating into global settings without additional adapters or transformers.

This adaptability also ensures resilience against power fluctuations, providing safe and stable storage for sensitive materials.

▶ EFFICIENT TECHNOLOGY

This device is supplied with inverter technology, enabling variable compressor speed, lower energy consumption and lower noise levels with the additional effects of being very robust against fluctuations on the power grid and differences in supply voltage, no need for voltage stabilizers and/or voltage regulators.



ULUF P400 MV



We designed the model with easily accessible compartments including four removable inner doors that are individually insulated with magnetic catches. This smart function also guarantees easy defrosting and effortless maintenance of the unit.



Our new vacuum valve solution features an automatic pressure equalization port. With fast, reliable pressure equalization, your valuable samples remain protected, while allowing for effortless opening and operation whenever needed.



The modernized shelves in the new Integratine are perforated and easily adjustable, offering the best flexibility for your storage needs. Extra durable shelves with up to 50 kg.



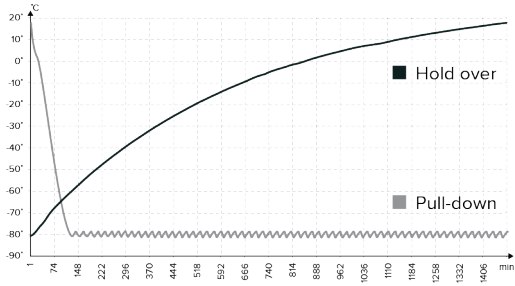
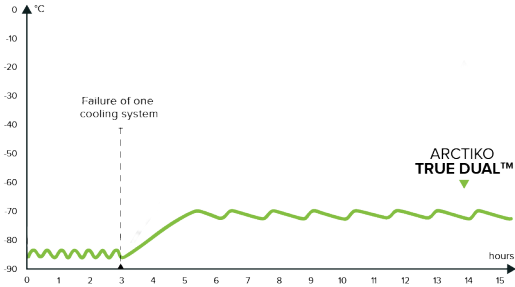
TRUE DUAL™ TECHNOLOGY



DIRECT COOLING

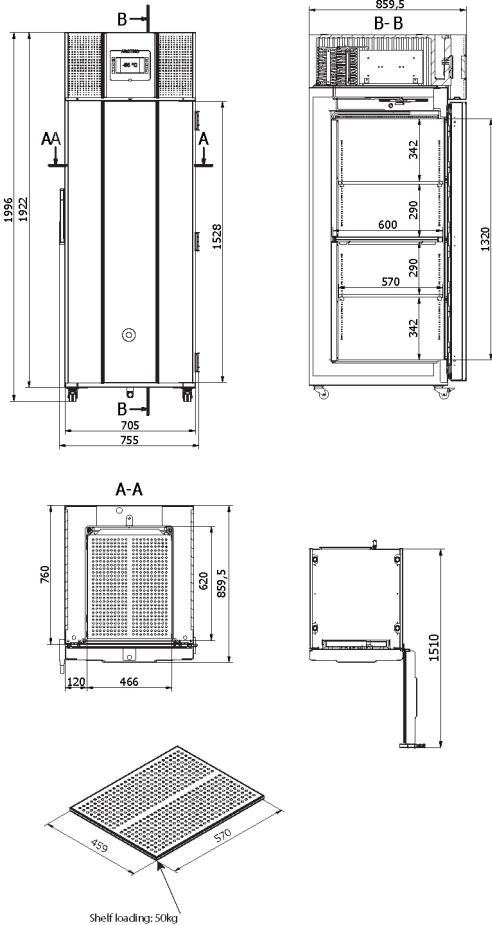


VIP VACUUM INSULATED PANELS



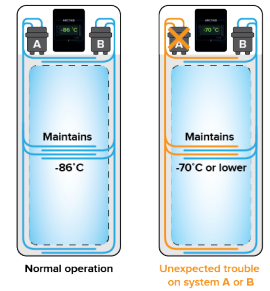
▲ IMPROVED RECOVERY TIMES

Pull-down times measures how quickly a freezer can reach the correct temperature, the faster the better. Hold over indicates the time the freezer can maintain a safe internal temperature.



◀ ARCTIKO TRUE DUAL™ System

ARCTIKO's true dual cooling system provides a reliable backup, maintaining consistently low internal temperatures. This advanced system ensures additional safety, high performance, and fast temperature recovery, with the capability of maintaining a stable -70°C, offering unmatched protection for your valuable samples.



| MODEL | | ULUF P400 MV |
|--|---|---|
| Main specifications | Item code | 1000047 |
| | Temperature range (°C) | -40 / -86 |
| | Max. ambient temperature (°C) | 32 |
| | Capacity (L) | 381 |
| | Exterior dimensions WxDxH (mm) | 755x859x1999 |
| | Interior dimensions WxDxH (mm) | 466x620x1320 |
| | Weight (KG) | 217 |
| | Insulation (mm) | 120 |
| | Cooling technology | dual system / static |
| | Controller model / probe type | V700 / PT100 |
| Power | Power supply (V) | 100 to 240 |
| | Frequency (Hz) | 50/60 |
| | Power consumption (kWh/24h) | 7,3 |
| | AMP (A) | - |
| | Power (Watt) | - |
| Alarm functions | Alarm (displayed as text, not codes) | Yes |
| | Visual / acoustic alarm | Yes / Yes |
| | Power failure alarm | Yes |
| | Adjustable high / low-temperature alarm | Yes / Yes |
| | Open door alarm | Yes |
| | Probe failure alarm | Yes |
| | Low battery alarm | Yes |
| | Compressor failure alarm | Yes |
| | Battery backup for alarms (approx. hrs.) | 72 |
| | Data logging & external connection | Voltage-free contact for remote alarm (e.g. GSM alarm module) |
| Electronic data logger | | Yes |
| RS 485 port | | Optional |
| USB port for software update & data download | | Yes |
| Display features | Temperature chart recorder | Optional |
| | Display type | 7" touch screen |
| | Number of optional reference probes | 0 (1 included) |
| | Password protection for turning unit on / off | yes |
| Other features | Temperature graph on display | yes |
| | Vacuum release port | yes |
| | Access port for external probe etc. (int. diameter mm) | 12 |
| | Light | yes |
| | Lock with key | Yes |
| | Castors (total pcs) / castors with brake (pcs) | 4 / 2 |
| | Sub lids / inner doors (pcs) | 4 |
| | Fixed shelves (pcs) / adjustable shelves (pcs) | 1 / 2 |
| | Max. no. of shelves (pcs) / recommended max. no. of shelves (pcs) | 5 / 5 |
| | Max. load per shelf (kg) | 50 |
| Refrigeration & cabinet | Total capacity of 50 mm boxes 9x9 dividers (pcs) | 264 |
| | Total capacity of 75 mm boxes 9x9 dividers (pcs) | 168 |
| | Total capacity of 96 mm boxes 9x9 dividers (pcs) | 120 |
| | Max. capacity of samples in Arctiko 10x10 boxes (pcs) | 26.400 |
| | Number of compressors | 2 |
| | Refrigerant | GG20 |
| | Interior cabinet material | Stainless steel |
| | Exterior cabinet material | Painted steel |
| | Colour (exterior cabinet) | White |
| | Foam type | Polyurethane |
| Shipping | VIP vacuum insulated panels | Yes |
| | Shipping weight (kg) | 343 |
| | Shipping dimensions WxDxH (cm) | 87x127x225 |
| Shipping volume (m ³) | 2,49 | |



IEC 61010 / EN IEC 61010 / CSA C22.2 no 61010