

FLX Storage Cabinets

FLX Storage Cabinets offer a highly flexible storage solution for clinical and procedural supplies in healthcare facilities. Built to industry standard width, FLX cabinets are sized for easy installation or replacement of existing cabinets. The cabinets are designed with translucent interior components to provide easy visibility of stored supplies. FLX cabinets are available in four pre-configured models or are customizable to fit workflow requirements.

- Customizable and pre-configured models are available
- Interior components options include trays and bins, slot shelves, sliding shelves, and catheter FIFO module
- Finish options include powder-coated metal or stainless steel
- Keyed and keyless locking systems for added security
- Translucent interior components to easily view supplies
- Available with casters or a four or six-inch toe kick
- Optional door-activated LED lighting



Rolling Cabinet 36"
36"W x 27"D x 78"H

Fixed Cabinet 36"
36"W x 27"D x 75.5"H
(4" toe kick)
36"W x 27"D x 77.5"H
(6" toe kick)

Rolling Cabinet 19"
18.5"W x 27"D x 78"H

Fixed Cabinet 19"
18.5"W x 27"D x 75.5
H (4" toe kick)
18.5"W x 27"D x 77.5"H
(6" toe kick)

Rolling Cabinet 60"
60"W x 29.875"D x 78"H

Specifications

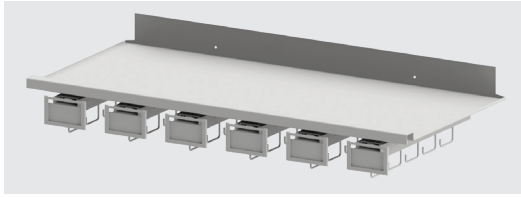
Construction: Powder Coated Metal with Locking Hinged Glass Doors

Available Finishes: Bright White or Stainless Steel

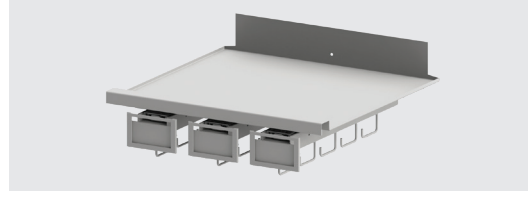
Options:

- Door Activated LED Lighting
- Keyless Lock

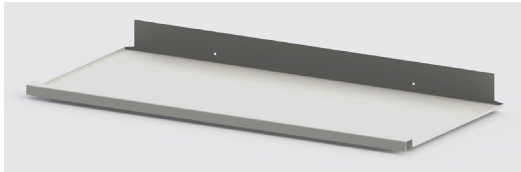




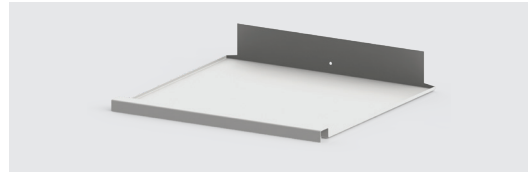
Full-Width Shelf With FIFOglide Rack



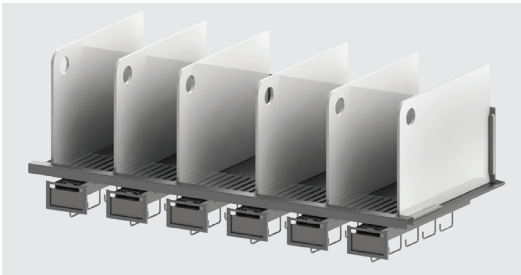
Half-Width Shelf With FIFOglide Rack



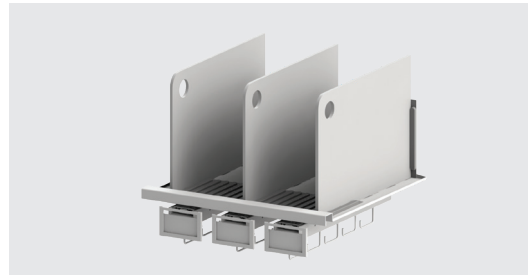
Full-Width Shelf



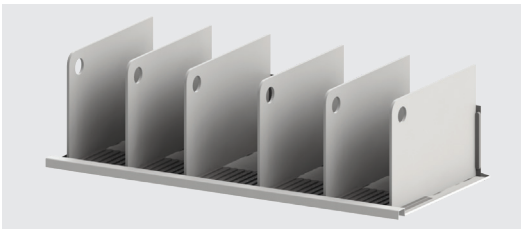
Half-Width Shelf



6 Column SlotShelf With FIFOglide Rack



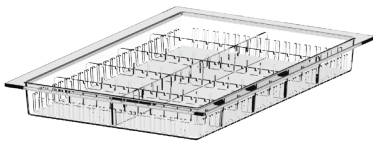
3 Column SlotShelf With FIFOglide Rack



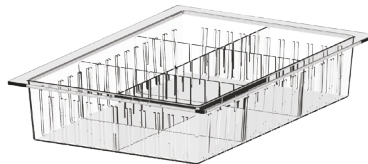
6 Column SlotShelf



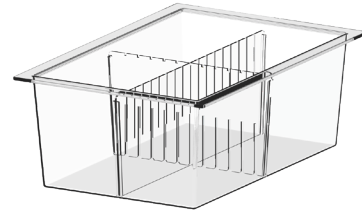
3 Column SlotShelf



Divided ISO Trays - 2" Depth



Divided ISO Trays - 4" Depth



Divided ISO Trays - 8" Depth



Keyed Cabinet Lock



Keyless Cabinet Lock



LED Light Strip