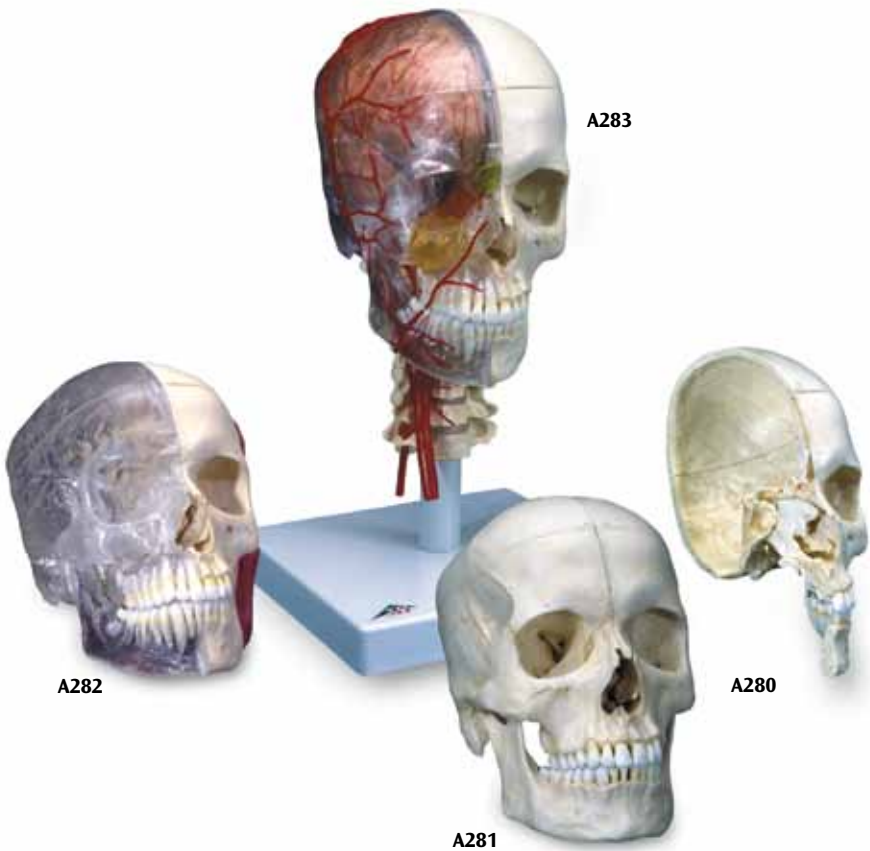




*...going one step further*



A282

A283

A280

A281

**A280 - A283**

# 3B Scientific® BONElike™

**English** The 3B Scientific® System Skulls are manufactured out of a new type of material. It allows for the first time an absolutely natural reproduction of even the finest anatomical structures. Bone products made of the new 3B BONElike™ material both look and feel like real bones. Even the weight corresponds almost exactly to that as in reality.



# 3B Scientific® System Skulls

English

for qualified higher education

*The series of 3B Scientific® system skulls was developed especially for university studies in order to meet highest educational standards.*

*This original cast of a first-class human skull, in median-sagittal section, is available in various models.*

*All bony anatomical details are represented so true to life that the models can hardly be distinguished from the original skull. Even the nasal sinuses are shown in their natural moulding. For a close study of*

*the nasal turbinate the nasal septum is detachable. All the teeth are individually removable.*

*Thanks to the use of the new 3B BONElike™ material and sophisticated production procedures, the skulls have an absolutely realistic appearance and their weight is almost the same as that of a real skull.*

## A280

### Bony skull half

This unique version of a left half of the osteocranium is especially suited for the student's budget. The half skull can be disassembled into the calvarium, base of skull, mandible and nasal septum. An affordable first-class model for the study of all anatomical structures.

## A281

### Bony skull

This version shows a complete skull in median-sagittal section. It can be disassembled into two halves each of the calvarium and base of skull, the nasal septum and the complete mandible. For a demonstration of the masticatory motions, the mandible is mounted flexibly. An outstanding skull for the study of the bony structure and the complex anatomy of the human skull



## English

### A282

#### Combi skull, transparent/bone

This combination of one transparent and one bony skull half is unique and offers, especially teachers of anatomy, a topographic comparison of the structures which are not visible in other skull models. The right, transparent skull half offers the study of important anatomical details, such as the location of the nasal sinuses. When used in combination with the left bony skull half, the student is easily able to transpose the positioning of the sinuses to his understanding of the bony skull.

The transparency of the jaw allows a unique view of the peridental pockets and tooth roots. The teeth can be taken out for a detailed view. In addition, the outer masticatory muscles (M. masseter, M. temporalis) are represented on the bony skull half. These features make the skull especially valuable for dentists as well.

The skull can be disassembled into two halves each of the calvarium and base of skull, the nasal septum, the complete mandible and both masticatory muscles.



### A283

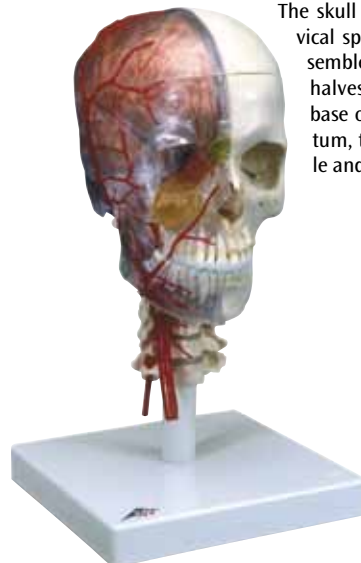
#### Didactic skull deluxe

This world-wide unique and top-quality skull does not leave any questions in the study of anatomy of the skull unanswered! The possibility of transposing the structures visible in the transparent half to the bony half gives this skull an especially high didactic value.

In the right, transparent skull half, the location of the nasal sinuses can be easily viewed even from the outside, since they are marked in different colours: maxillary sinus (yellow), ethmoidal cells (orange), frontal sinus (green), sphenoidal sinus (purple). The sinuses in the skull, and the neck and face arteries are also shown in different colours: Sinus durae matris (blue), A. carotis com., A. carotis ext., A. carotis int. and the branches of the A. meningea (red).

One half of the brain, which can also be viewed through the transparent calvarium, visualizes the relative location of the cerebrum and the course of the sinuses.

The peridental pockets and tooth roots can be viewed through the transparent jaw. The teeth can be taken out for more detailed studies. The mandible is mounted flexibly to allow demonstration of the masticatory motion.



The skull is mounted on a cervical spine and can be disassembled into two calvarium halves, the left half of the base of skull, the nasal septum, the complete mandible and a brain half.



**3B SCIENTIFIC® PRODUCTS**