



*...going one step further*



**VH409**

(1001261)

### Assembly instructions

Position the base so that the 3B logo shows to the front left.

#### Assembly of the right brain half, fig. A (horizontal sections)

- Place part 1 into the base, ensuring an exact fit.
- Insert the metal connecting pin into part 2, so that it protrudes in equal length at the top and bottom.  
Now connect part 2 with part 1.
- Insert part 3a into part 3 and connect both with part 2.

#### Assembly of left brain half, fig. B (vertical sections)

- Insert the metal connecting pin into part 5, so that it protrudes in equal length at the top and bottom
- Connect parts 4 and 6 with part 5 and insert all into the base.

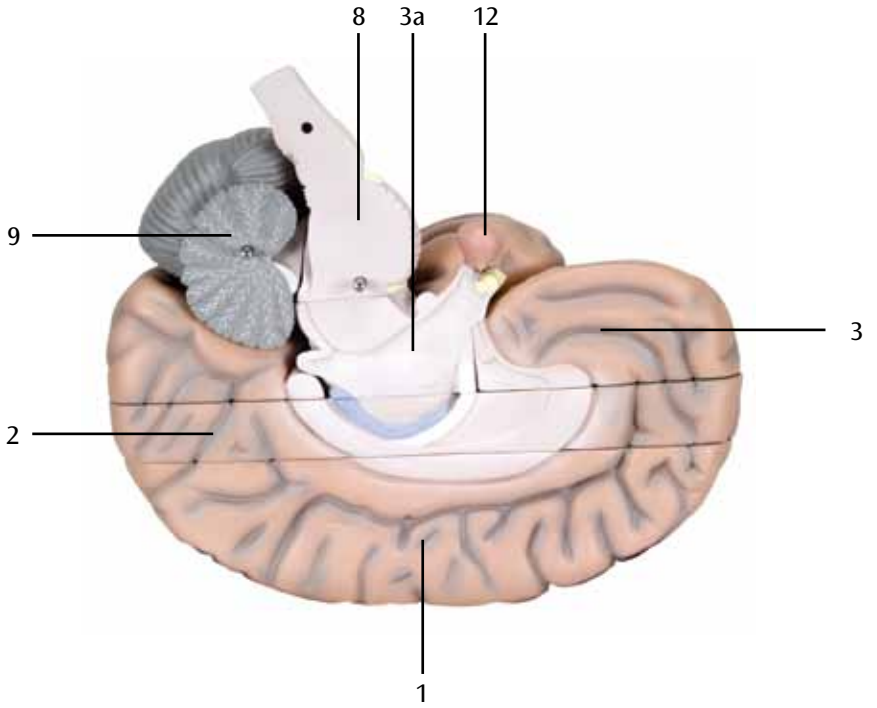
#### Assembly of brain stem, cerebellum and pituitary gland

- Place part 8 onto part 7 and insert both into part 4.
- Place part 10 onto part 11.
- Connect parts 10/11 with part 9 and insert all behind the encephalic trunk.
- Place part 12 onto parts 3a and 5.

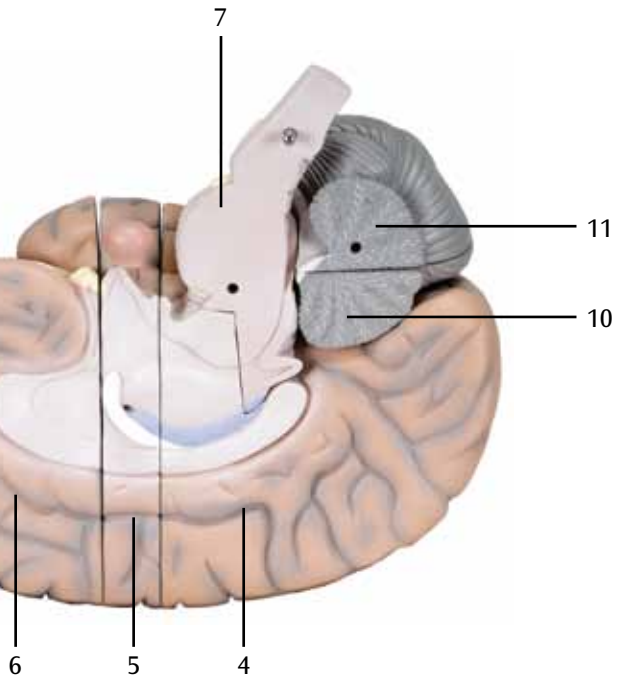
#### Overview of line drawings

- Fig. 1 Surface of brain, cranial view (right half numbered)
- Fig. 2 Surface of brain, lateral view of grooves (left half)
- Fig. 3 Surface of brain, caudal view
- Fig. 4 Surface of brain, caudal view
- Fig. 5 Right half of the brain, medial view
- Fig. 6 Model part 6: frontal section, dorsal view
- Fig. 7 Model part 5: frontal section, ventral view
- Fig. 8 Model part 5: frontal section, dorsal view
- Fig. 9 Model part 1: horizontal section, caudal view
- Fig. 10 Model part 2: horizontal section, cranial view
- Fig. 11 Model part 2: horizontal section, caudal view
- Fig. 12 Model part 3: horizontal section, cranial view (without part 3a)
- Fig. 13 Model part 3a: frontal section, dorsal view
- Fig. 14 Model parts 9, 10, 11 (= cerebellum): dorsal view
- Fig. 15 Model parts 9, 10, 11 (= cerebellum): ventral view
- Fig. 16 Model part 10: horizontal section, caudal view
- Fig. 17 Model part 4: frontal and diagonal section, medio-caudal view
- Fig. 18 Model part 3a: horizontal section, caudal view
- Fig. 19 Model parts 7, 8: ventral view
- Fig. 20 Model parts 7, 8: dorsal view

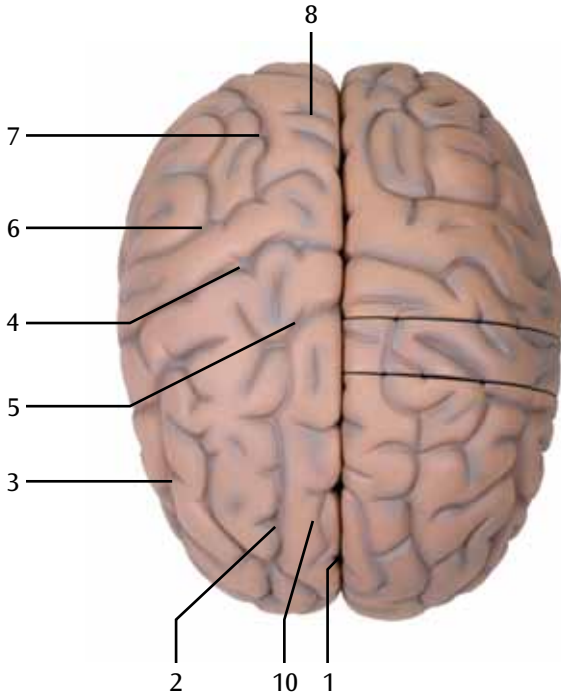
**A**



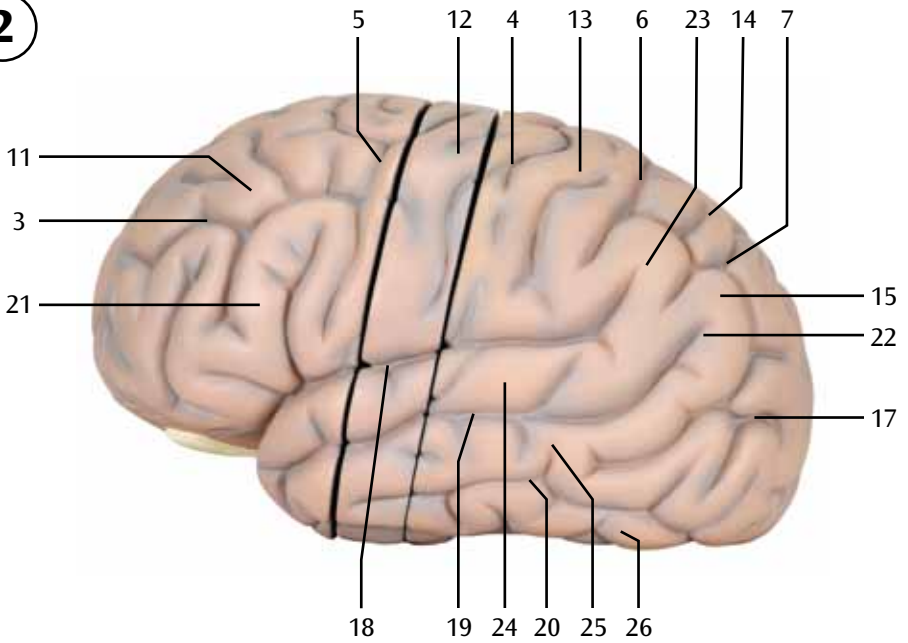
**B**



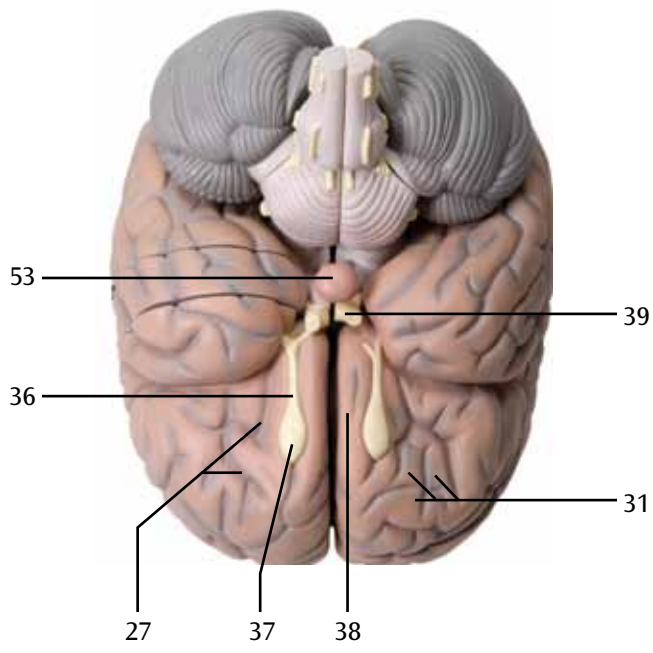
1



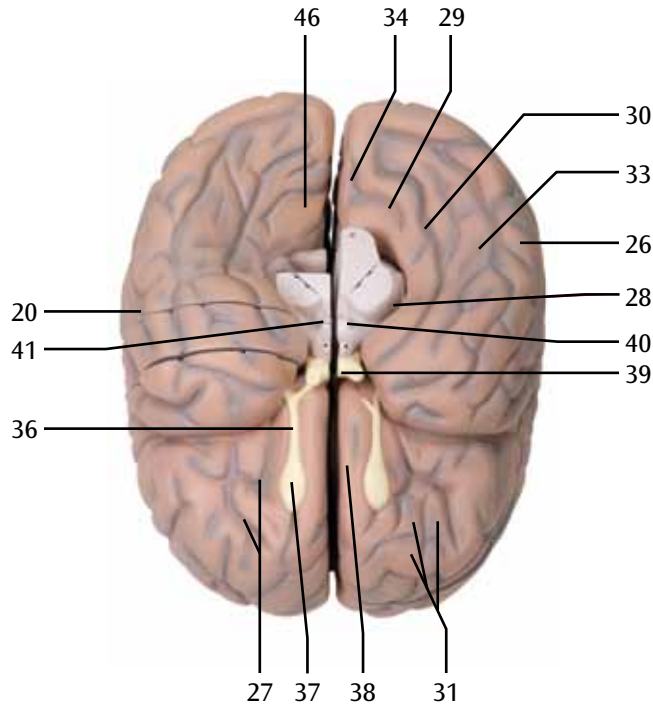
2



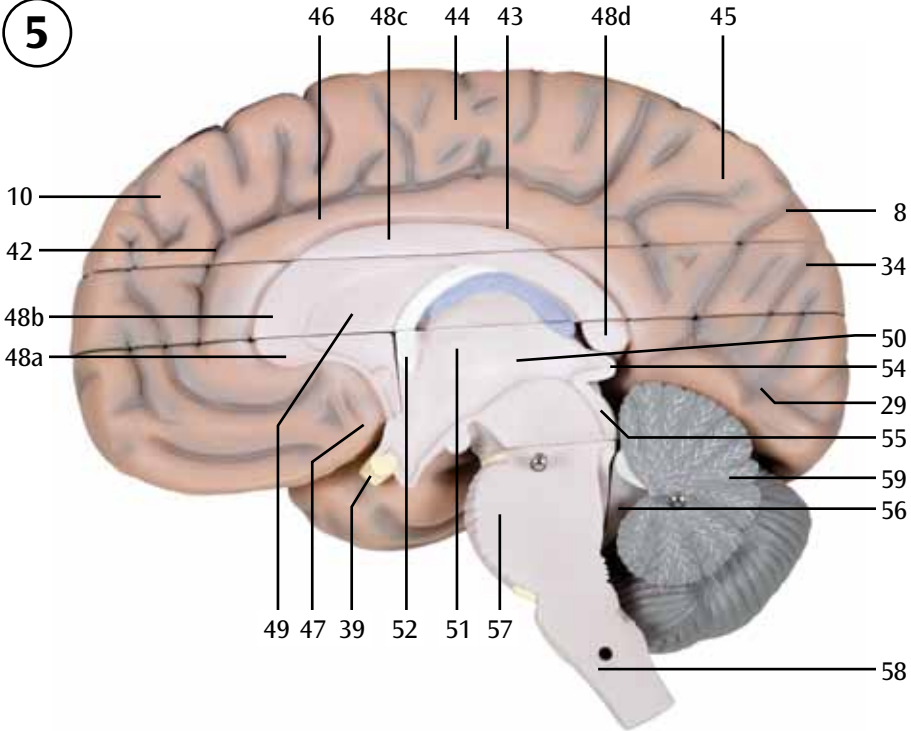
3



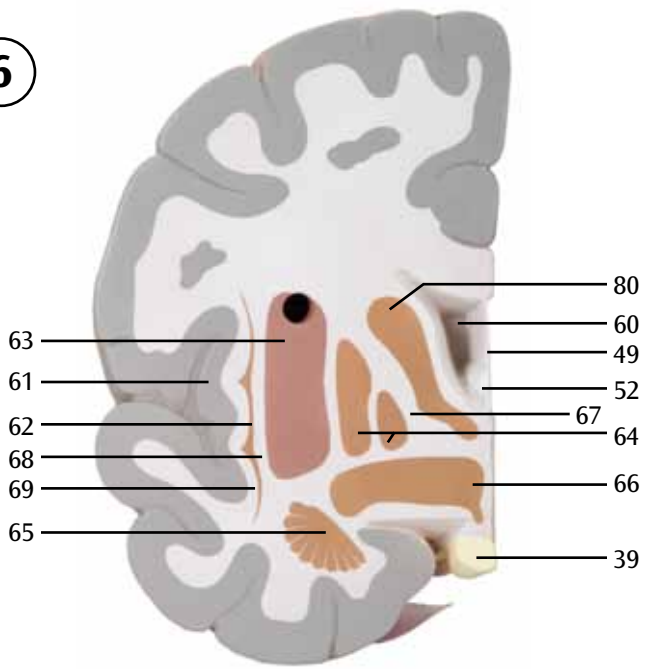
4



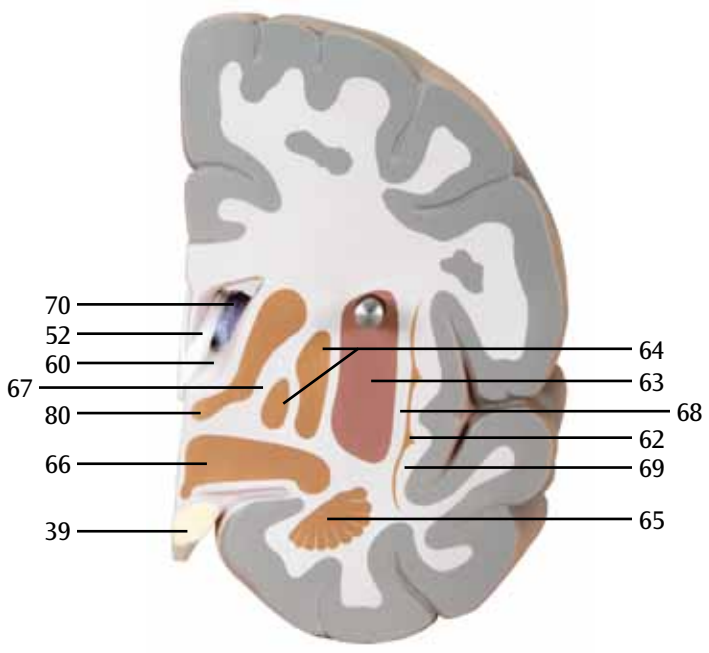
5



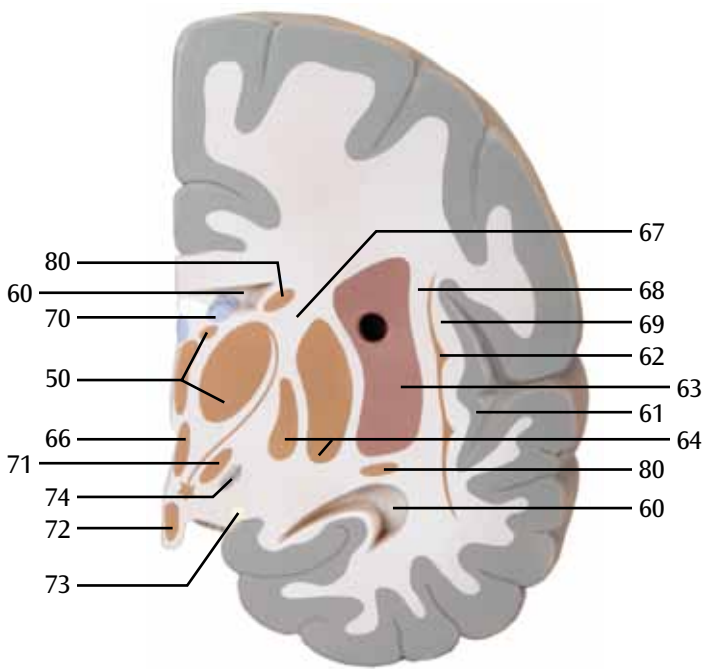
6



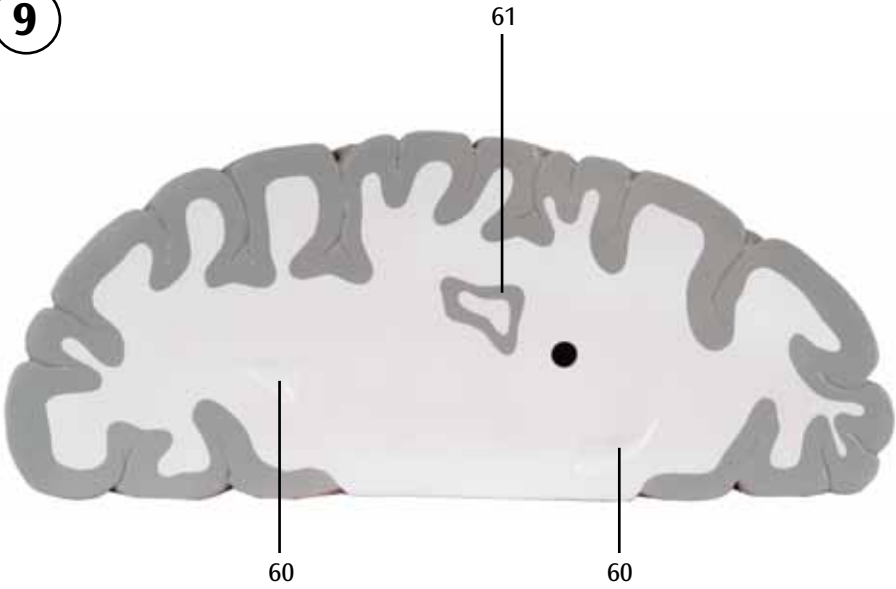
7



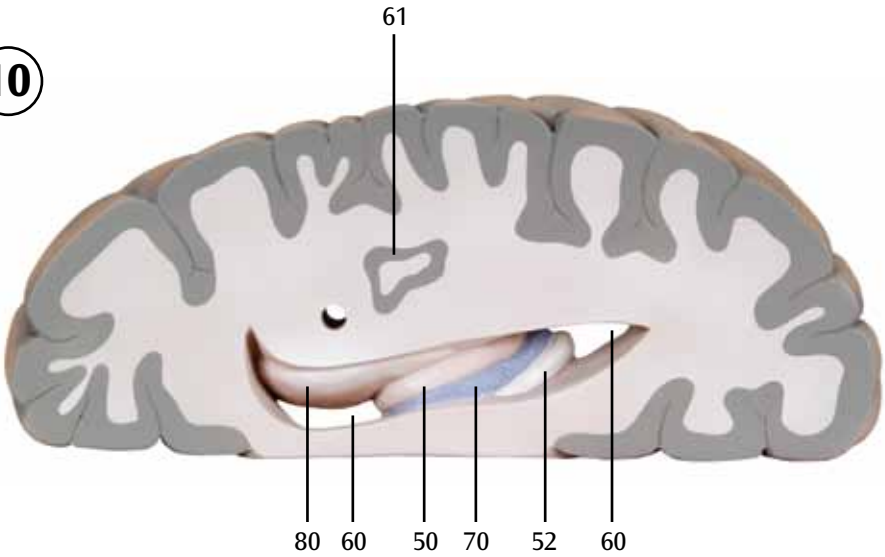
8



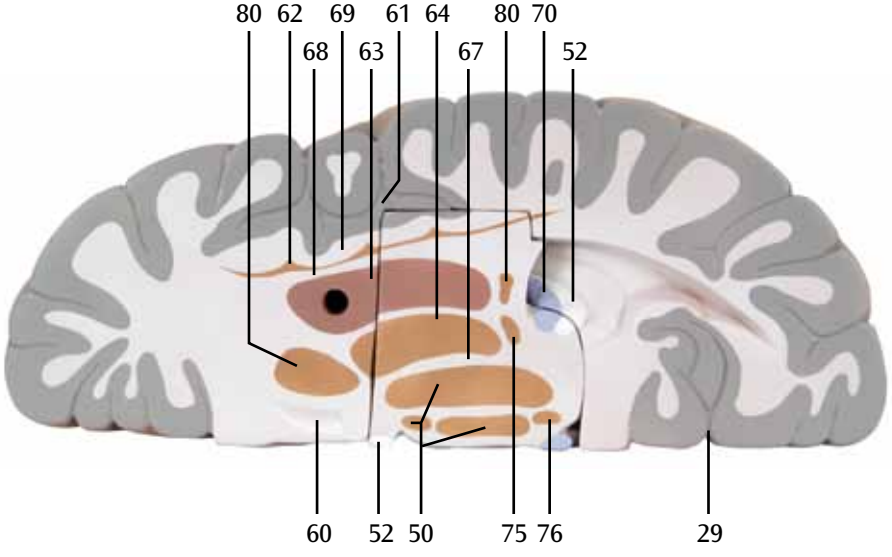
9



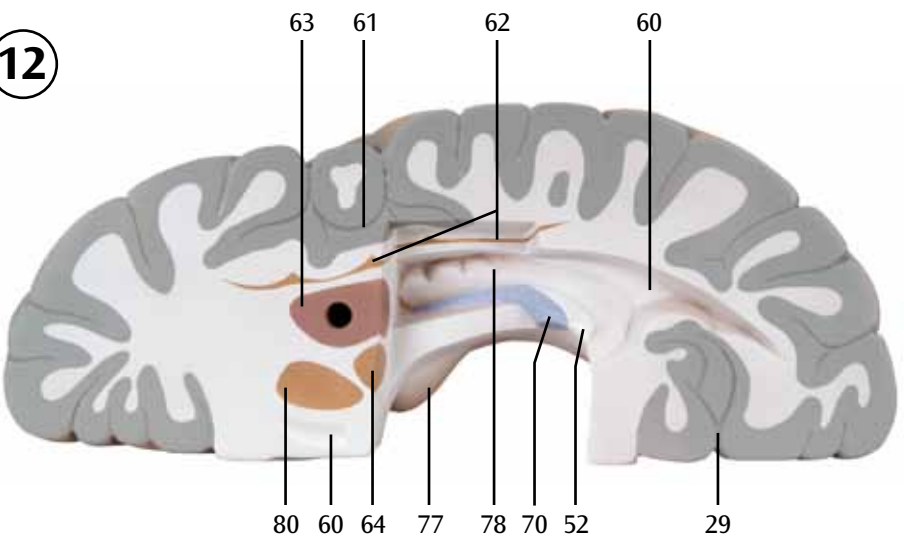
10



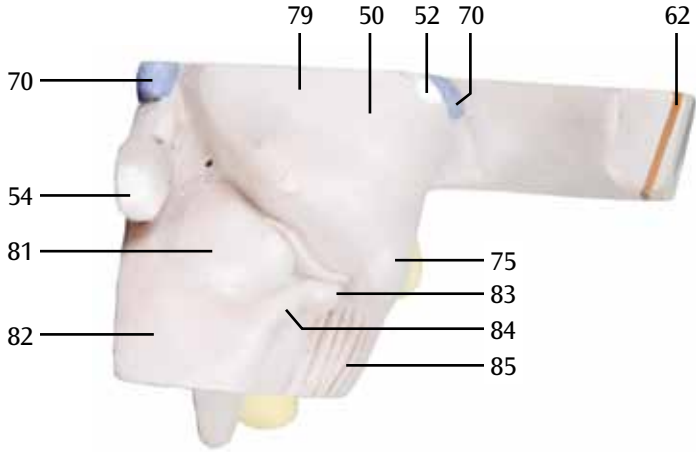
11



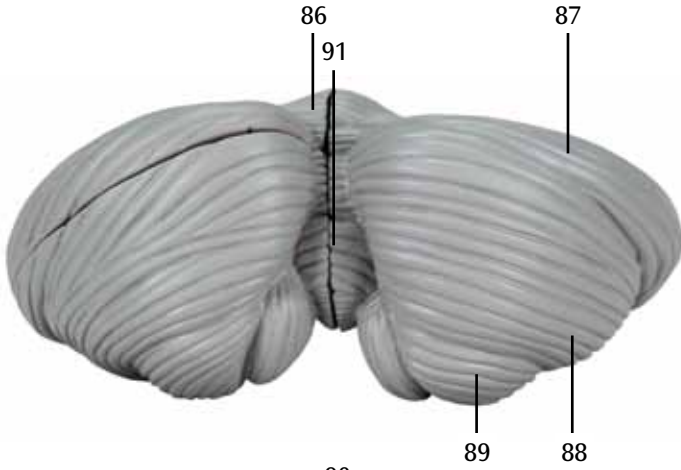
12



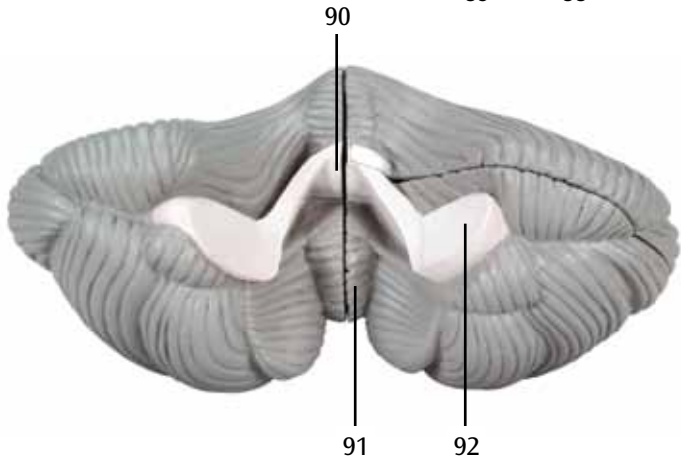
13



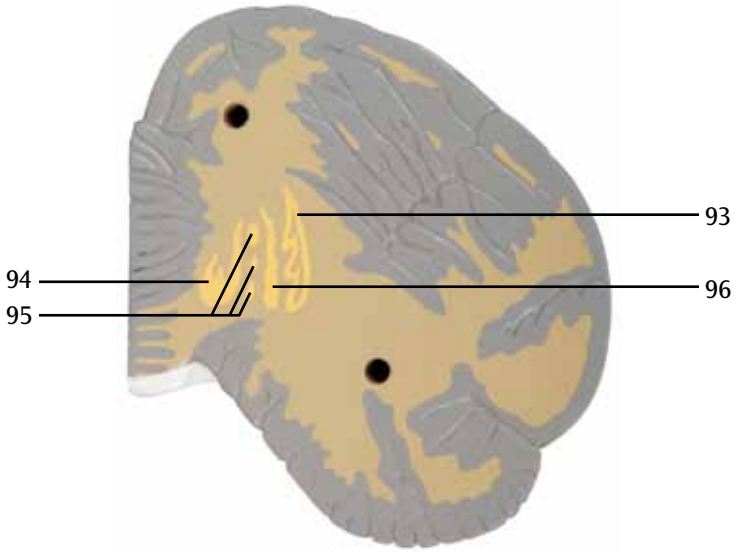
14



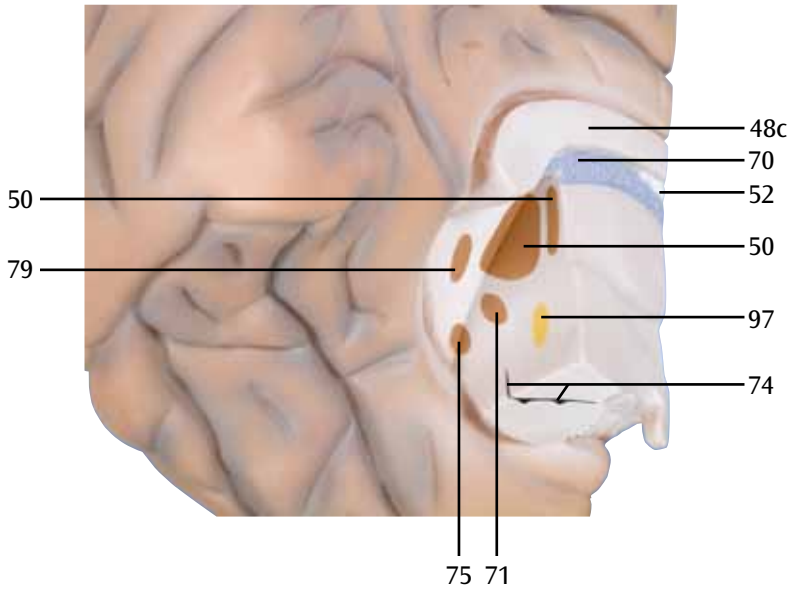
15



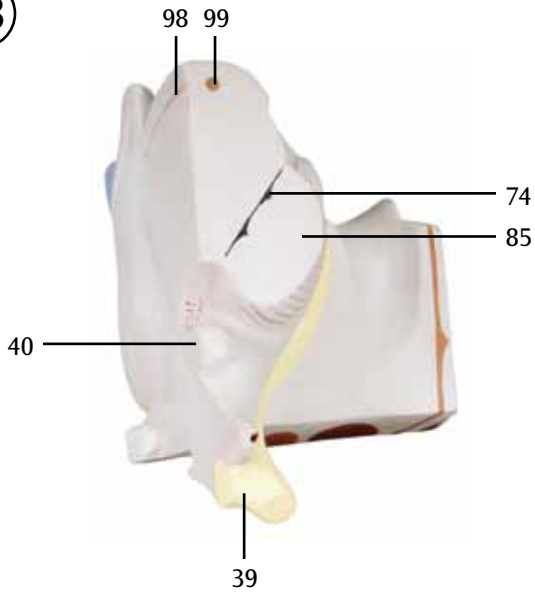
16



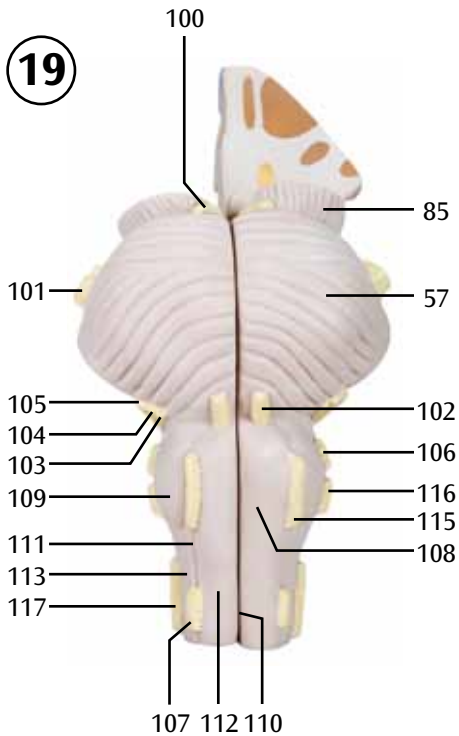
17



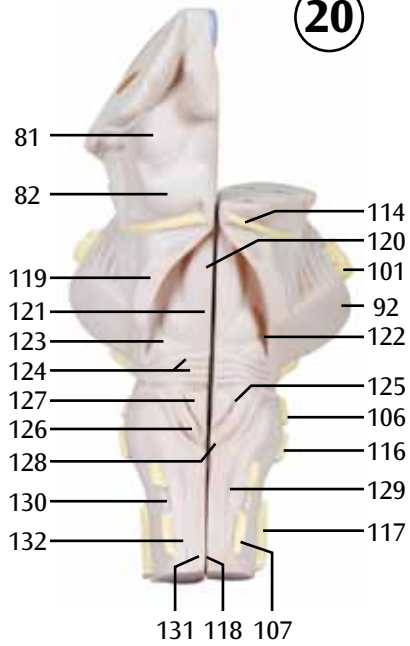
18



19



20



- 1 Longitudinal cerebral fissure
- 2 Superior frontal sulcus
- 3 Inferior frontal sulcus
- 4 Central sulcus
- 5 Precentral sulcus
- 6 Postcentral sulcus
- 7 Intraparietal sulcus
- 8 Parietooccipital sulcus
- 9 Occipital sulcus
- 10 Superior frontal gyrus
- 11 Middle frontal gyrus
- 12 Precentral gyrus
- 13 Postcentral gyrus
- 14 Superior parietal lobule
- 15 Inferior parietal lobule
- 16 Lateral occipital gyri
- 17 Transverse occipital sulcus
- 18 Lateral sulcus
- 19 Superior temporal sulcus
- 20 Inferior temporal sulcus
- 21 Inferior frontal gyrus
- 22 Angular gyrus
- 23 Supramarginal gyrus
- 24 Superior temporal gyrus
- 25 Middle temporal gyrus
- 26 Inferior temporal gyrus
- 27 Orbital sulci
- 28 Hippocampal sulcus
- 29 Calcarine sulcus
- 30 Collateral sulcus
- 31 Orbital gyri
- 32 Parahippocampal gyrus
- 33 Lateral occipitotemporal gyrus
- 34 Cuneus
- 35 Medial occipitotemporal gyrus
- 36 Olfactory tract
- 37 Olfactory bulb
- 38 Straight gyrus
- 39 Optic chiasm
- 40 Mammillary body
- 41 Mesencephalon
- 42 Cingulate sulcus
- 43 Sulcus of corpus callosum
- 44 Paracentral lobule
- 45 Precuneus
- 46 Cingulate gyrus
- 47 Subcallosal area
- 48 a Rostrum of corpus callosum
- 48 b Genu of corpus callosum
- 48 c Trunk of corpus callosum
- 48 d Splenium of corpus callosum
- 49 Septum pellucidum
- 50 Thalamus
- 51 Interthalamic adhesion
- 52 Fornix
- 53 Pituitary gland
- 54 Pineal gland
- 55 Tectal plate
- 56 Fourth ventricle
- 57 Pons
- 58 Pyramid of medulla oblongata
- 59 Cerebellum
- 60 Lateral ventricle
- 61 Insula
- 62 Claustrum
- 63 Putamen
- 64 Globus pallidus
- 65 Amygdaloid body
- 66 Hypothalamus
- 67 Internal capsule
- 68 External capsule
- 69 Extreme capsule
- 70 Choroid plexus
- 71 Subthalamic nucleus
- 72 Nucleus of mammillary body
- 73 Optic tract
- 74 Substantia nigra
- 75 Lateral geniculate body
- 76 Habenular nucleus
- 77 Uncus
- 78 Hippocampus
- 79 Pulvinar of thalamus
- 80 Caudate nucleus
- 81 Superior colliculus
- 82 Inferior colliculus
- 83 Medial geniculate body
- 84 Brachium of inferior colliculus
- 85 Cerebral crus
- 86 Central lobule
- 87 Quadrangular lobule
- 88 Superior semilunar lobule
- 89 Inferior semilunar lobule
- 90 Superior medullary velum
- 91 Vermis of cerebellum
- 92 Middle cerebellar peduncle
- 93 Dentate nucleus
- 94 Fastigial nucleus
- 95 Posterior interpositus nucleus (Globose nucleus)
- 96 Anterior interpositus nucleus (Emboliform nucleus)
- 97 Red nucleus
- 98 Aqueduct of midbrain
- 99 Nucleus of inferior colliculus
- 100 Oculomotor nerve (III)
- 101 Trigeminal nerve (V)

**English**

- 102 Abducent nerve (VI)
- 103 Facial nerve (VII)
- 104 Intermediate nerve
- 105 Vestibulocochlear nerve (VIII)
- 106 Glossopharyngeal nerve (IX)
- 107 Spinal nerve, root
- 108 Pyramid of medulla oblongata
- 109 Inferior olive
- 110 Anterior median fissure
- 111 Anterolateral sulcus
- 112 Anterior funiculus
- 113 Lateral funiculus
- 114 Trochlear nerve (IV)
- 115 Hypoglossal nerve (XII)
- 116 Vagus nerve (X)
- 117 Accessory nerve (XI)
- 118 Posterior median sulcus
- 119 Superior cerebellar peduncle
- 120 Medial eminence of rhomboid fossa
- 121 Facial colliculus
- 122 Superior fovea of rhomboid fossa
- 123 Vestibular area of rhomboid fossa
- 124 Medullary stria of fourth ventricle
- 125 Inferior fovea of rhomboid fossa
- 126 Vagal trigone
- 127 Hypoglossal trigone
- 128 Obex
- 129 Posterior intermediate sulcus
- 130 Posterolateral sulcus
- 131 Gracile fasciculus
- 132 Cuneate fasciculus (BURDACH)



# 3B Scientific



© Copyright 2006 / 2013 for instruction manual and design of product:  
3B Scientific GmbH, Germany