

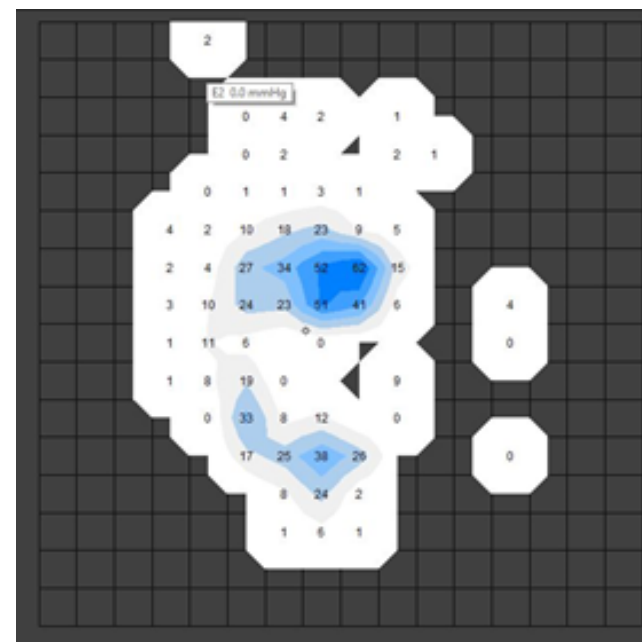
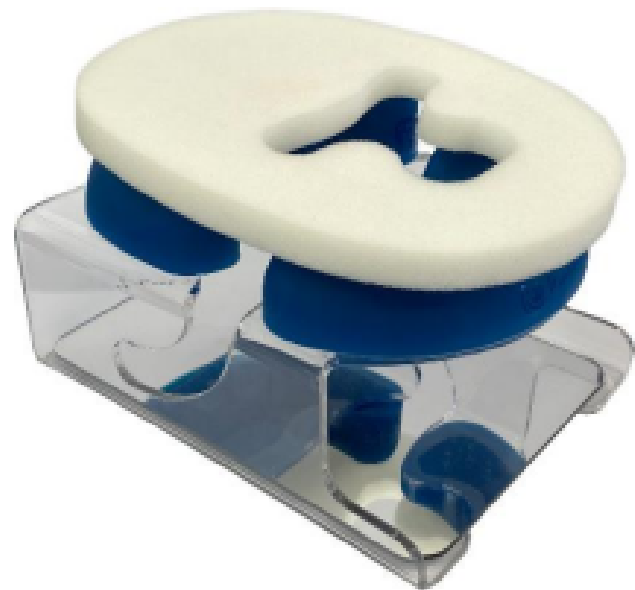


CVP01- Clearview Prone Headrest

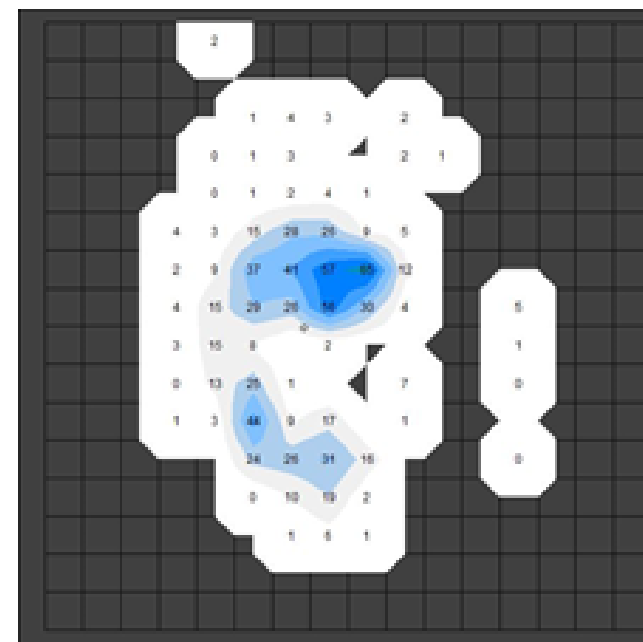
The Test was run for over 24 hours. The simulation was preformed for a body weight of 130KG, 8.8kg head.

The pressure threshold of 32mmHg has been used as a value for measurement as anything above this is harmful to the patient as it exceeds the capillary pressure in the blood vessels.

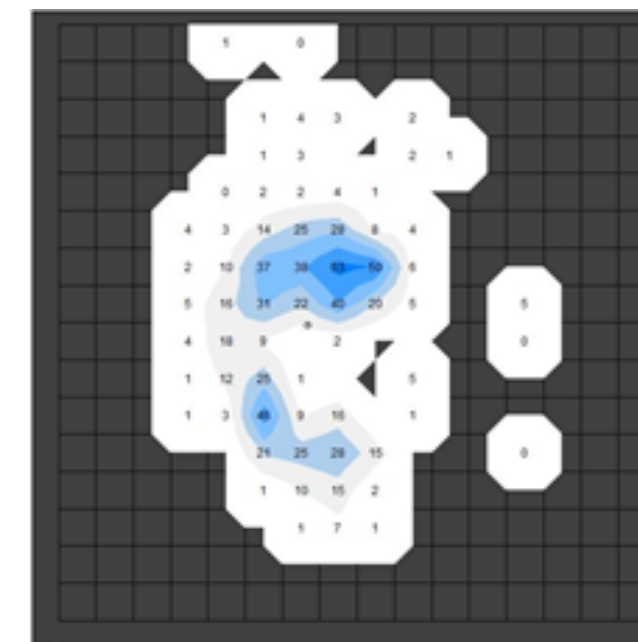
Pressure reading after pressure distribution had stablized- 11.78mmHg.



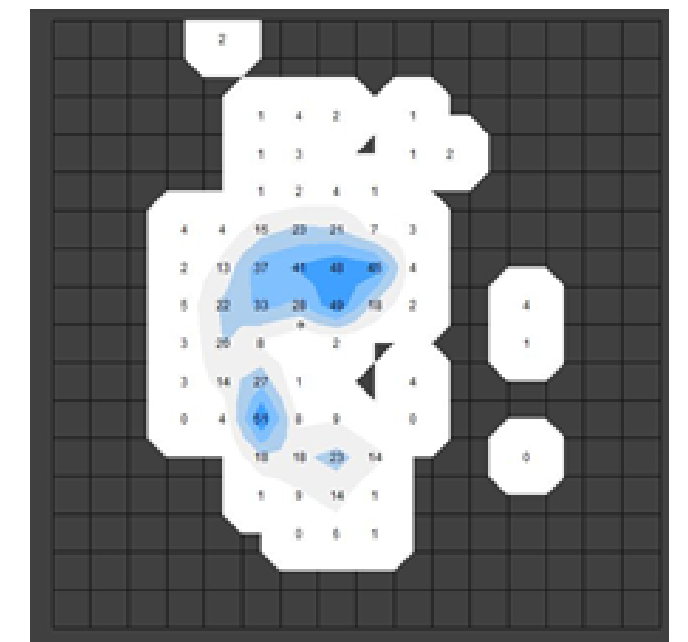
Initial- 0 Hours into test



6 Hours into test



12 Hours into test



24 Hours into test