

Health o meter®

P r o f e s s i o n a l

3001HR

Height Rod Installation Instructions

Thank you for your purchase of this Health o meter® Professional product. Please read this manual carefully, and keep it for easy reference or training. For User Instructions updates and revisions please go to: www.homscales.com

Note: The 3001HR Height Rod Kit is compatible exclusively with the 3001KL-AM, 3001KG-AM, 3001KL-AMUA, 3001KG-AMUA, 3001KL-AM-BT and 3001KG-AM-BT weighing scales.

Warning: Do not use the 3001HR as a handle.

Upon receipt of the product, if damage is found, contact your shipper or a Health o meter® Professional representative immediately at 800-815-6615. Claims must be filed with the shipper as soon as possible after receipt. To avoid damaging when unpacking, do not use a box cutter, knife, scissors or any sharp object when opening the protective inner packaging. The following information details what you will find inside the carton as you unpack the parts for assembly. Set the carton aside for storage.

Tools Included: 3/16" Allen Wrench

Tools Required: ½" Wrench

Parts List:



3/16" Allen Wrench



5/16-18 x 1-7/8" button head screws, 2 each & 5/16"-18 hex nuts, 2 each

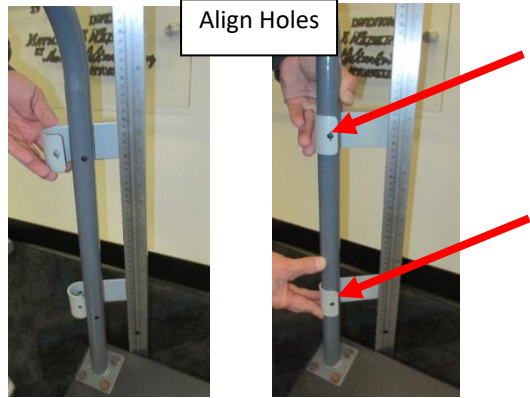


Height Rod with Mounting Brackets

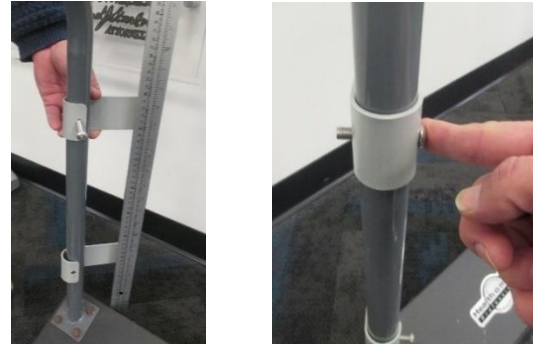
1. Obtain the height rod with its attached mounting brackets. Place the Height Rod assembly inside of the Handrails and behind the Scale Base.



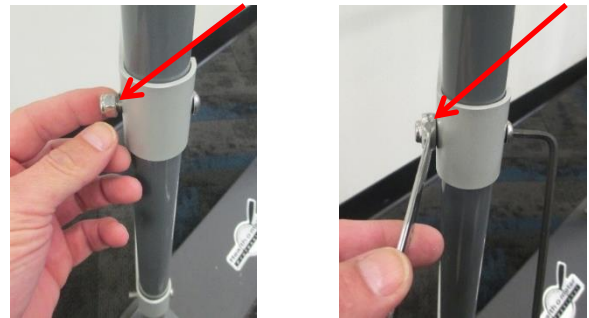
2. Slide Mount Brackets over Left Handrail so that holes in Mount Brackets align with holes in the Handrail Tube.



3. Slide Mounting Screws into holes in front and Mount Brackets push completely thru Mount Brackets and Handrail Tube.







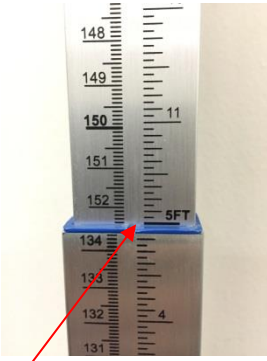

4. Thread the Hex Nuts onto the Mount Bolts and secure using a 1/2" Wrench and the provided 3/16" Allen Wrench.



5. Assembly is now complete.



Measuring Patient Height

<p>1. With the headpiece in the folded down position, slide the headpiece up or down to the estimated height of the patient. For patients shorter than 53" / 134.5cm, press the black button at the top of the height rod to release the lock then slide the headpiece down. Then lift the headpiece into its horizontal position.</p>	<p>Slide with headpiece in down position.</p>    <p>For patients under 53" / 134.5, press black button to release, then slide height rod down.</p>
<p>2. Position the patient onto the platform with their head positioned under the headpiece. Ensure that the patient's posture is upright, and that the patient's head is straight and level. Push the headpiece down until it rests on the patient's head.</p>	
<p>3. Determine the patient's height by reading the value at the read-off mark.</p> <ol style="list-style-type: none">For heights above 53" / 134.5cm, read height at the blue line in the center of the height rod.For heights below 53" / 134.5cm, read height at the blue line at the bottom of the headpiece.	 <p>Read here for heights greater than 134.5 cm</p>  <p>Read here for heights less than 134.5 cm</p>



Health o meter® is a registered trademark of Sunbeam Products, Inc. used under license.

Health o meter® Professional products are manufactured, designed, and owned by Pelstar, LLC.

We reserve the right to improve, enhance, or modify Health o meter® Professional product features or specifications without notice.

© Pelstar, LLC 2021