

# ALEX Quick Start-Up Guide

This is the Quick Start-Up Guide for ALEX that will help you get up and running with your new simulator in just a few short steps. For more detailed instructions on how to use ALEX, please refer to the ALEX "Instructions for Use" included within the package and the ALEX Help Website, <http://alex.simulaids.com/en/help>.

## Included Items

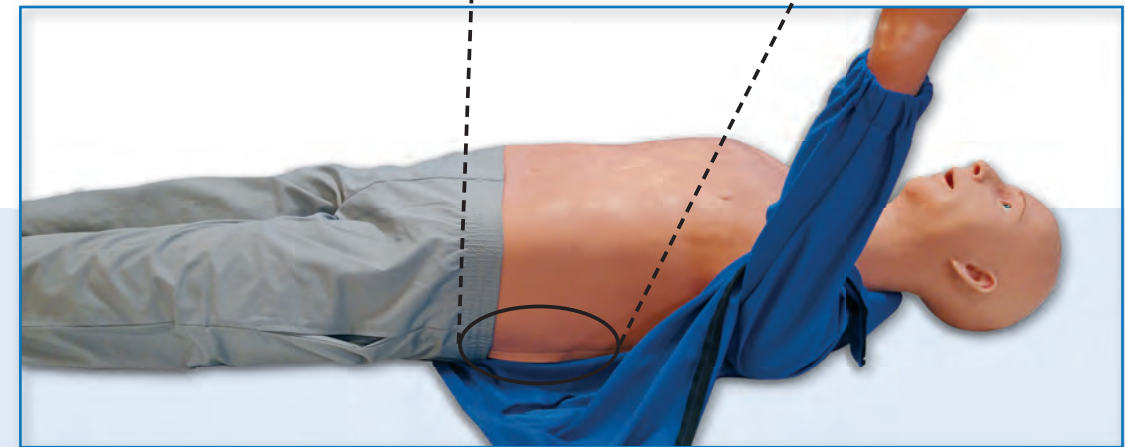
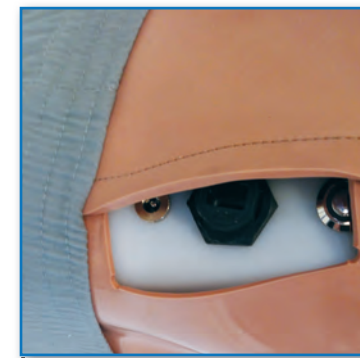
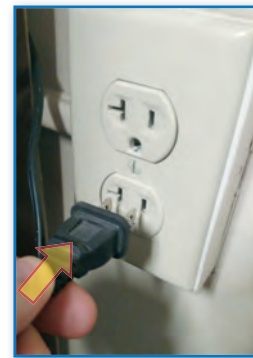
ALEX — Fully Assembled Patient Communication Simulator



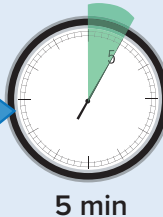
## 1 Remove ALEX from Shipping Container



## 2 Plug ALEX In



## 3 Power ALEX On



**4A-1** OR **4B**  
Wireless Connection



Wired Connection





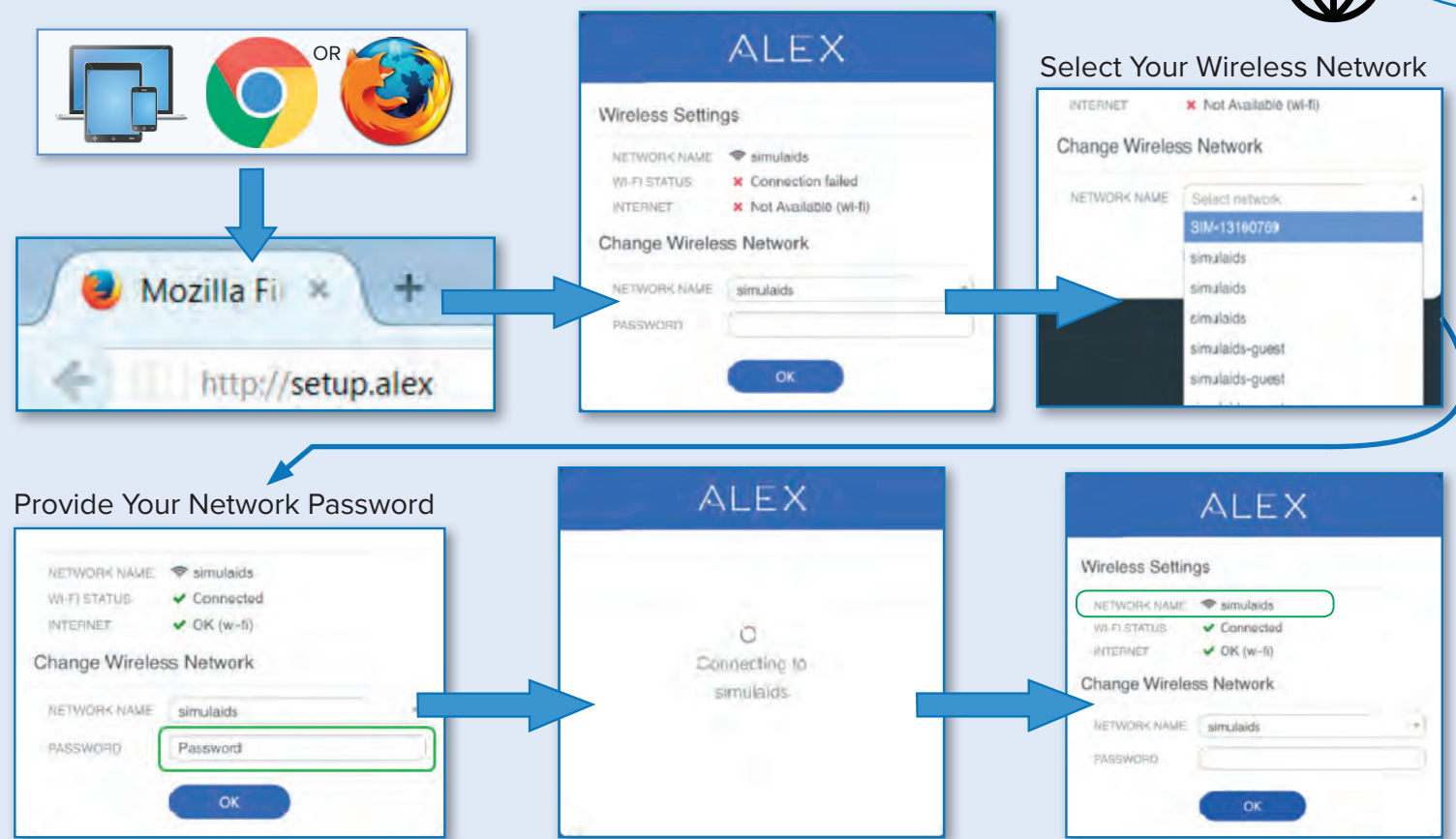
# 4A-1 Connect ALEX – Wireless Connection

## Connecting Instructor Device to ALEX



# 4A-2 Connect ALEX – Wireless Connection

## Connecting ALEX to Your Network

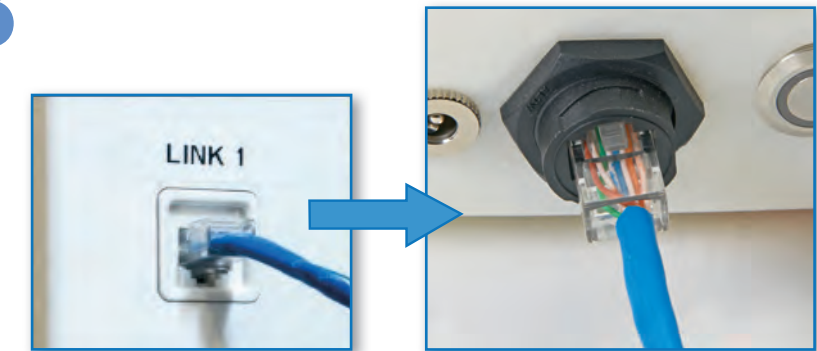


# 4A-3 Connect ALEX – Wireless Connection

## Connecting Instructor's Device to Your Network



# 4B Connect ALEX – Wired Connection



# 5 Open ALEX's Web App

