

# ASSEMBLY INSTRUCTIONS

## PTO BARRIER SHIELDS

OVERHEAD ACRYLIC MOBILE BARRIER ON STAND  
PTO-001 | PTO-002 | PTO-003 | PTO-004



**PHILLIPS SAFETY**  
PRODUCTS INC.

# TOOLS



**PHILLIPS SCREWDRIVER**



**ALLEN WRENCH  
(INCLUDED)**

# STEPS

## INSTALL CASTERS IN BASE

# 1.

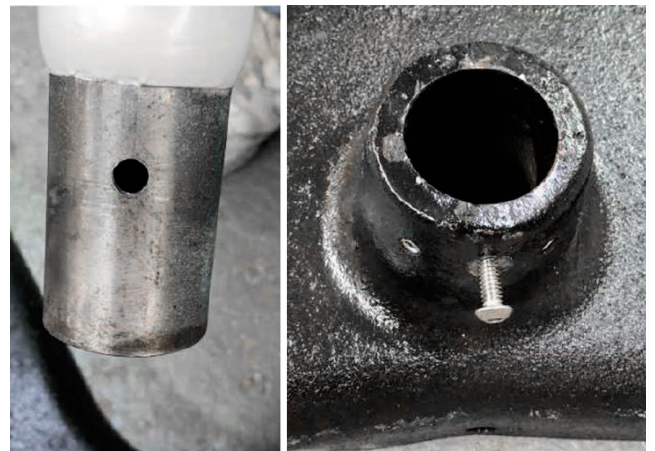
**Place the base upside down and screw the caster wheel shaft into the holes.**



# 2.

**Turn the base over and place the bottom half of the pole in base.**

**Lined up the hole in the pole with the screw in the base.**



### **Tighten the screws.**

*2 allen screws and center screw.*

#### **ATTENTION**

*It is extremely important to tighten correctly because this keeps the pole from rotating in the base. Once, if the pole rotates, it can allow the arm to swing too far and the barrier can tip over.*



**Place base cover over the base and roll black rubber ring to the base of the pole.**



# STEPS

## ASSEMBLE SWING ARM ON TOP HALF OF THE POLE

**1.**  
First, remove the screw from swing arm.



**2.**  
Turn the base over and place the bottom half of the pole in base.

Then insert the swing arm into the top half of the pole, re-installing the allen screw and 3 more screws.



**3.**

**Insert the top half of the pole *with attached swing arm* into the bottom half of the pole.**



**4.**

**Lined up the holes and install 3 screws.**



# STEPS

## ASSEMBLE STANDING BASE

# 1.

**The curved part MUST BE perpendicular to the back line of base.**

*As showing on picture.*



# 2.

**Adjust the swing arm horizontal movement tension with the allen wrench.**



# STEPS

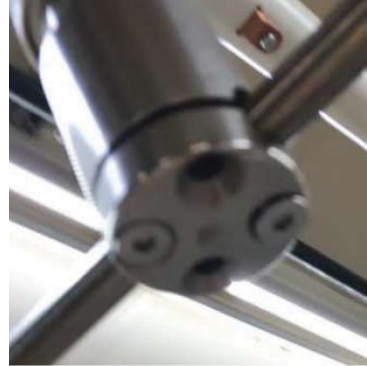
## ASSEMBLE LEAD ACRYLIC BARRIER

**Attach the acrylic barrier to the swing arm securing with 4 screws.**

**Ensure the bar is centered, then fully tighten the screws.**

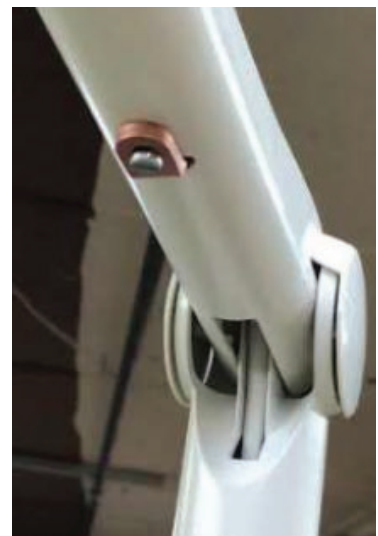
**ATTENTION**

*This is a 2 person job. One person will hold the acrylic while the other person will install the screws.*



**Remove the transport lock (copper insert) on the arm.**

**This allows the arm to move up and down.**





# STEPS

## ADJUSTING MOVEMENT CONTROL

**Lifted the arm cap - located in the arm.**

*As showing on picture.*

**Remove the tool and adjust the arm in a + or - direction as needed.**

**Storage tool and close cap when done.**



## THE BARRIER IS READY!

To make sure that is configured correctly, the acrylic barrier cannot swing horizontally more than the width of the “V” of the base.



**“ Leading manufacturer of  
occupational safety products ”**

