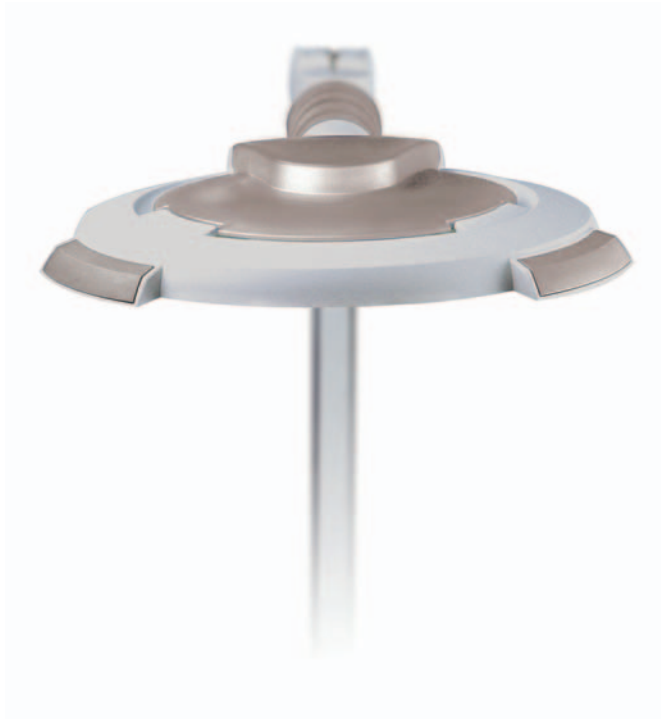




# Epic Magnifier Exam Light

*The perfect combination of world-class optics, precision movement and a large viewing area.*

Epic® Magnifier commands attention based on aesthetics alone – but its real value lies in its world class optics, performance and precision movement. With its patented arm system, the Epic® is more rugged than any other magnifier. The arm stops exactly where positioned and does not require constant tightening or lock mechanism adjustments.



PERFORMANCE RELIABILITY VALUE



Durable, precise, and powerful, Burton's Epic® Magnifier sets new performance standards in health care vision.

*The Right Light*

MAGNIFIERS

# EPIC<sup>®</sup> MAGNIFIER

*Precise, powerful, sturdy...and easy on the eyes.*

## EPIC<sup>®</sup> MAGNIFIER FEATURES:

- > 3.5 diopter polished glass lens
- > 6.5" (16.5 cm) diameter circular viewing area
- > Powerful 22-watt bulb – 10,000-hr. average bulb life
- > Parallel motion, patented enclosed arm system
- > Quick start electronic ballast (flicker-free)
- > Integral handles and cover for lens protection
- > Available in floorstand and table/wall models
- > 5-year warranty



[\*\*EM60W 115V Epic Magnifier Wall/Table Mount\*\*](#)

[\*\*EM62W 230V Epic Magnifier Wall/Table Mount\*\*](#)

[\*\*EM60FL 115V Epic Magnifier Floorstand on Mobile Base\*\*](#)

[\*\*EM62FL 230V Epic Magnifier Floorstand on Mobile Base\*\*](#)

[\*\*8970-001 4 Diopter Lens Attachment\*\*](#)

[\*\*8970-002 6 Diopter Lens Attachment\*\*](#)